

20  
13  
edition

# Paris Region

## Key Figures







**1** - Paris roofs © Paris Tourism Office - Photographer: Daniel Thierry **2** - La Défense © Paris Tourism Office - Photographer: Jocelyne Genri **3** - Genopole Campus Evry © ARD - Photographer: Denis Bourges (Tendance Floue) **4** - Rungis © Marché International de Rungis **5** - Bakery © Paris Tourism Office - Photographer: Amélie Dupont **6** - Port de Plaisance de Paris Arsenal © Paris Tourism Office - Photographer: Jocelyne Genri **7** - Open-air cinema © Paris Tourism Office - Photographer: Marc Bertrand **8** - INSEAD Fontainebleau © ARD - Photographer: Pascal Aymar (Tendance Floue) **9** - Snecma, Safran group © ARD - Photographer: Thierry Arduin (Tendance Floue) **10** - «Jour de fête» fair at the Grand Palais © Paris Tourism Office - Photographer: Marc Bertrand.



## Discover Paris Region's dynamism and diversity

It is with great pleasure that we present this new edition of Paris Region Key Figures, produced by the Paris Region Economic Development Agency (PREDA), the Paris Ile-de-France Region Chamber of Commerce and Industry (CCI de région Paris Ile-de-France) and the Paris Region Urban Planning & Development Agency (IAU île-de-France).

This publication provides an overview of the economic and social life of the Paris Region, briefly presenting the main characteristics that make it one of the strongest regions in Europe and the world.

The Paris Region is open to the world, making ecological transition and innovation strengths for the future.

The PREDA also provides a great deal more information on its website [www.paris-region.com](http://www.paris-region.com) and will be delighted to help you locate and develop your business in the Paris Region.

The CCI de région Paris Ile-de-France supports all those advancing the regional economy: business owners, decision-makers, apprentices, students and also employees. Throughout the Paris Region it implements concrete actions and innovates on a daily basis to ensure the voices of businesses are heard, promote their growth, train men and women on the challenges of tomorrow, move business projects forward and promote the capital region to increase its influence: [www.cci-paris-idf.fr](http://www.cci-paris-idf.fr)

The IAU île-de-France continually monitors trends within the Paris Region and in relation to international developments. Its website offers a range of information including databases and interactive maps: [www.iau-idf.fr](http://www.iau-idf.fr)

Welcome to the Paris Region!

**Please do not hesitate to share your comments and suggestions for improving this new edition: [prkf@paris-region.com](mailto:prkf@paris-region.com)**

This booklet was produced by:  
- the Paris Ile-de-France Region Chamber of Commerce and Industry (CCI de région Paris Ile-de-France)  
Chairman: Pierre-Antoine Gailly  
- the Paris Region Urban Planning & Development Agency (IAU île-de-France)  
Chief Executive Officer: François Dugeny  
- the Paris Region Economic Development Agency (PREDA)  
Chief Executive Officer: Sabine Enjalbert  
Publication Manager: Pierre Trouillet, General Manager of CCI de région Paris Ile-de-France  
Editor: Jean-Louis Scaringella, Deputy Director General responsible for research and consulting at the CCI de région Paris Ile-de-France  
Coordination/design/editorial: Martine Delassus (CCI de région Paris Ile-de-France), Anne-Marie Roméra, Christine Tarquis (IAU île-de-France), Florence Humbert and Hortense Patouillard (PREDA)  
Maps and charts: Pascale Guery (IAU île-de-France)  
Translation: Activation SARL  
Printing - Layout and cover page: TIMédian Impressions - Les Ulis (91) / France





# Paris Region in the European Union as at 01-01-2013





# Contents

	Discover .....	04
	Population .....	08
	Education .....	10
	Employment .....	12
	Research and Development .....	14
	Economic environment .....	16
	Meetings, exhibitions and tourism .....	20
	Transport .....	22
	Real estate .....	24
	Quality of life .....	26



# Discover

Located at the crossroads of European and world exchanges, the Paris Region is France's number one economic region and one of the top at European level. Made up of 8 departments and 1,281 towns, it has a population of 11.9 million (19% of the population of mainland France), younger than the national average.

## NUMEROUS ASSETS

- Its GDP represents approximately 30% of national wealth and almost 5% of the European Union's GDP, ahead of Greater London and Lombardy.
- Its strong industrial tradition is characterised by a dense fabric of SMEs and SMLs operating in a wide range of sectors. It unites a high density of technology-based businesses (from large groups to SMEs and start-ups), internationally renowned competitiveness clusters and one of the highest concentrations of scientific and technological businesses in Europe.
- As Europe's number one employment area, its workforce is highly qualified: 37% of French managers. The Paris Region is home to 21% of French universities and almost a quarter of engineering schools (independent of universities) as well as marketing, management and accounting schools.
- To increase its attractiveness, the region has developed major infrastructure. The Paris air «hub» is the largest in continental Europe: the majority of large European cities can be reached in less than two hours' flight. With 70 ports spread over 500 km of inland waterways, the region is also Europe's second largest waterway hub.
- Its high-speed communication networks enable businesses to benefit from technological conditions highly favourable to their development.



Ile de La Cité, Ile-Saint-Louis, Notre-Dame Garden, The Seine, Pont de la Tournele, Pont de Sully Paris  
© Paris Tourist Office – Photographer: Amélie Dupont



The Biocitech park at Romainville © ARD – Photographer: Michel Derouault

- Finally, the Paris Region, and Paris in particular as a city of art, history and culture, remain highly attractive to tourists from all over the world. For several years the region has been the world's top tourist destination. In addition, with over 600,000 m<sup>2</sup> of exhibition space, Paris is the European city with the most exhibitors and, alongside Milan, shares the position of world leader in terms of numbers of visitors to international trade shows.





## The Paris Region connected to the world



Source: PREDA

# Discover

## Discover the Paris Region





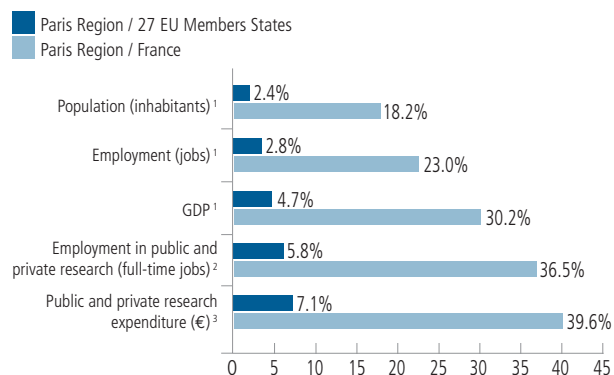


## Paris Region economic highlights

Surface area (km <sup>2</sup> ) <sup>1</sup>	12,012
Population as at 01-01-2012 (inhabitants) <sup>1</sup>	11,915,000
Population density in 2012 (inhabitants/km <sup>2</sup> ) <sup>1</sup>	992
GDP in 2010 (million €) <sup>1</sup>	572,400
GDP per capita in 2010 (€) <sup>1</sup>	48,400
Exports in 2011 (million €) <sup>2</sup>	75,200
Imports in 2011 (million €) <sup>2</sup>	132,400
Companies in 2011 <sup>1</sup>	816,400
Businesses in 2011 <sup>1</sup>	913,000
Companies established in 2011 <sup>1</sup>	133,200
Companies closed in 2011 <sup>1</sup>	9,700
Total number of jobs in 2010 (salaried + non salaried) <sup>1</sup>	6,000,000
Employment in public and private research in 2010 <sup>3</sup>	146,300
R&D expenditure in 2010 (billion €)	17.4
Jobs created by FDI in 2011 <sup>4</sup>	7,000
Total students in 2011-2012 <sup>5</sup>	642,500
Airport traffic in 2012 (million passengers) <sup>6</sup>	88.8
International high-speed train traffic in 2011 (million passengers) <sup>7</sup>	18
Office space in 2012 (thousand m <sup>2</sup> ) <sup>8</sup>	52,000

Sources: <sup>1</sup> Insee (French Institute of Statistics). <sup>2</sup> Paris Region Customs Department. <sup>3</sup> French Ministry of Research - Invest in France Agency. <sup>4</sup> PREDA. <sup>5</sup> French Ministry of Education. <sup>6</sup> Aéroports de Paris. <sup>7</sup> SNCF. <sup>8</sup> IAU IdF

## The Paris Region compared to France and to the European Union 27



<sup>1</sup>2012. <sup>2</sup>2010. <sup>3</sup>2009  
Sources: Insee (French Institute of Statistics), French Ministry of Research, Eurostat

## A COSMOPOLITAN REGION

- 12.5% of the population is foreign, i.e. 1,467,000 inhabitants
- 70,000 foreign students in universities, i.e. 19% of the total student population of Paris Region universities
- 7% of managers and 7% of intermediate professionals are foreigners in 2009
- Over 230 foreign companies established in 2011



Eiffel Tower and Alexandre III bridge © Paris Tourism Office - Photographer: Jocelyne Genri

## Paris Region

- One of Europe's leading economic and innovative regions
- A region connected to the world

# Population

## EUROPE'S MOST POPULATED REGION

- 11,915,000 inhabitants in 2012, accounting for:
  - 18.2 % of the French population
  - 2.4 % of the total population of the 27 EU member states
- 5 cities with over 100,000 inhabitants: Paris, Boulogne-Billancourt, Saint-Denis, Argenteuil and Montreuil



Skating rink at the Hôtel de Ville © CRT Paris Ile-de-France – Photographer: Fabian Charaffi

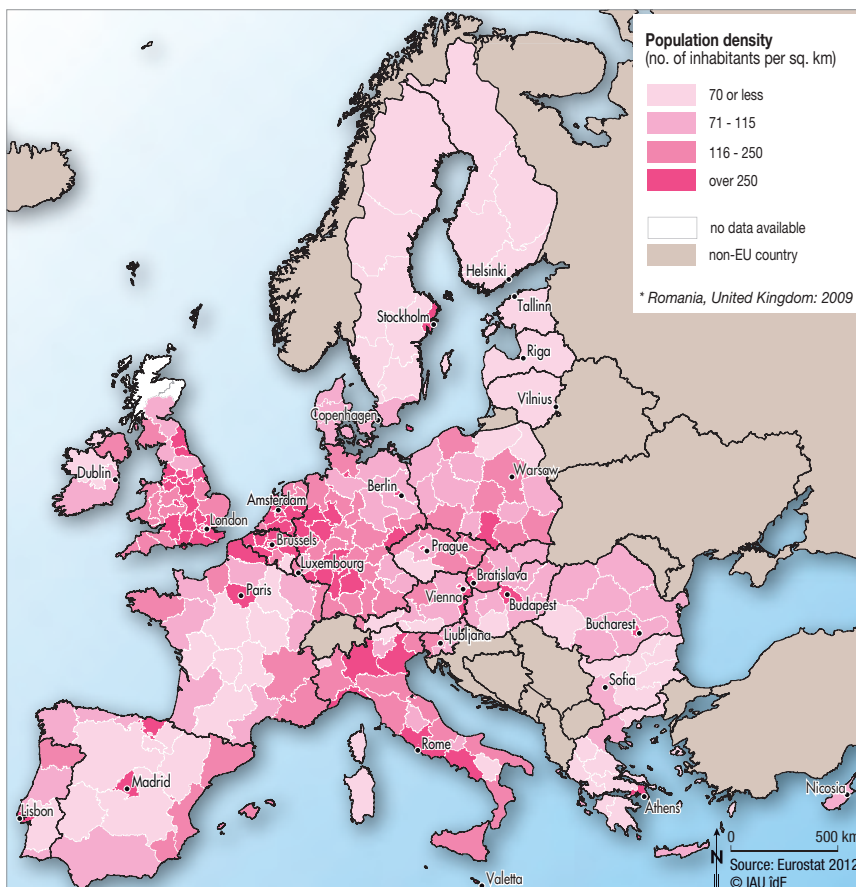
## The EU's 5 most densely populated regions in 2010

(inhabitants per km<sup>2</sup>)

Brussels Capital Region (BE)	6,767
London <sup>1</sup> (UK)	4,869
Vienna (AT)	4,290
Berlin (DE)	3,860
West Midlands (UK)	2,927
Paris Region (FR) ranks at no.19	982

<sup>1</sup>Inner and Outer London  
Source: Eurostat

## Population density of European Union regions in 2010\*



Jardin de Reuilly © Paris Tourism Office - Photographer: Amélie Dupont





## A YOUNG AND GROWING POPULATION

- 184,525 births / 71,250 deaths in 2010
- High birth rate: 15.4‰ (12.8‰ in France)
- 57% of the population of the Paris Region are under 40 years old
- Only 11% of the population of the Paris Region are aged 65 and over

## Population by age group in 2009

	Paris Region	France	Europe
0 - 24	34	32	28
25 - 39	23	20	21
40 - 64	32	34	35
65 and over	11	15	16

Source: Eurostat

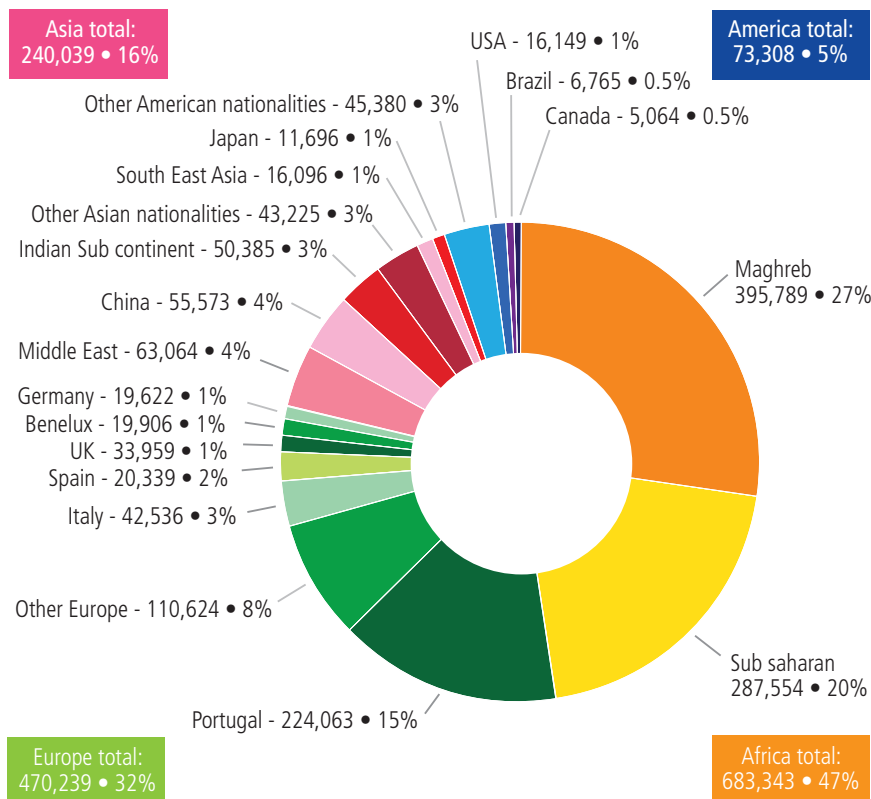
## A MULTICULTURAL POPULATION

- 12.5% of the population was of foreign nationality in 2009, representing 1,467,000 inhabitants
- 47% of African origin, 32% European, 16% Asian and 5% American
- 52% of the foreign population are between 25 and 54 years old



Market – Saint Denis © CRT Paris Ile-de-France – Photographer: I. Simon (Sipapress)

## Non-French nationals living in the Paris Region in 2009



Source: Insee (French Institute of Statistics)

## Paris Region

- Europe's most populated region
- A young and growing population

# Education

## A HIGH CONCENTRATION OF PUPILS AND STUDENTS

- Top region in Europe in terms of higher education students
- 642,500 students in higher education in 2011-2012
- 17 universities on 23 sites across the region
- 2,301,000 pupils in primary and secondary education in 2011-2012

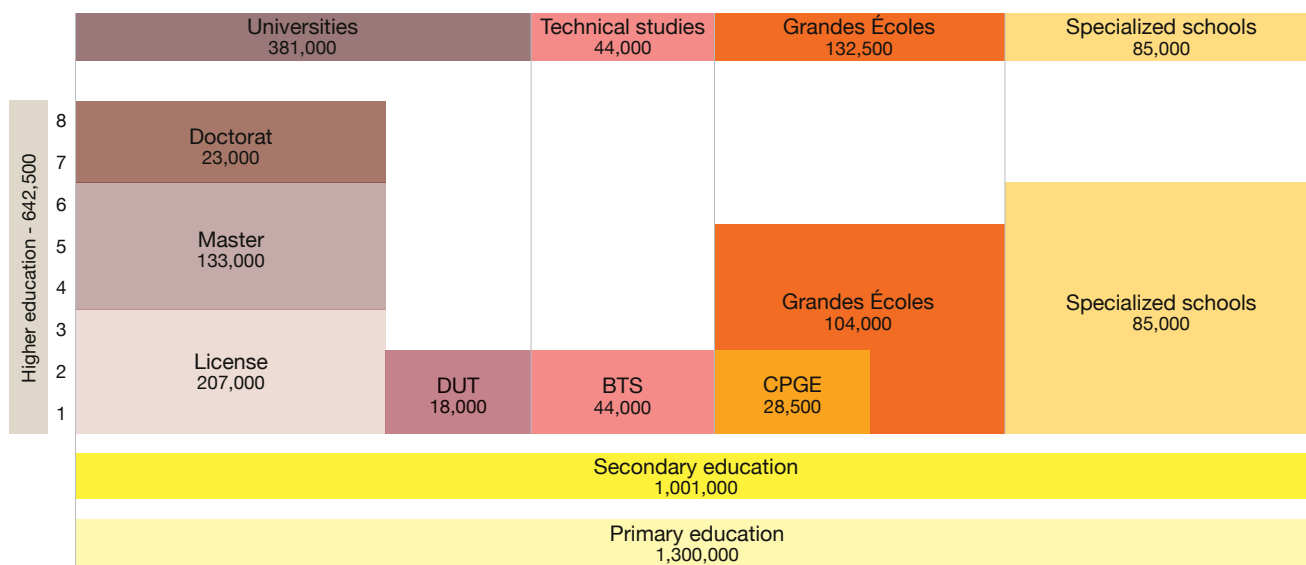


Cinémathèque Française © CRT Paris Ile-de-France - Photographer: N.Revelli-Beaumont/SIPAPRESS

## A STUDENT REGION OPEN TO THE WORLD

- 70,000 foreign students, i.e. 19% of the total student population of Paris Region universities
- 46% come from Africa, 24% from the European Union, 20% from Asia and 10% from America
- 22 multicultural schools with a bilingual education and a capacity of 5,500 students
- 11 foreign institutions with a capacity of 4,500 students representing 6 countries: Germany, Great Britain, Italy, Japan, USA and Spain

## Number of pupils and students in the Paris Region education system in 2011



Sources: French Ministry of Higher Education and Research 2011 - 2012

Legend : DUT : University Diploma of technology : BTS : Technical sections : Grandes Écoles : Engineering schools, management schools

: Specialized schools : Art, Architecture, Culture, Social, Paramedical : CPGE : Preparty classes for Grandes Écoles



## A STRONG EDUCATIONAL AND RESEARCH NETWORK

12 clusters, called PRES (Pôles de Recherche et d'Enseignement Supérieur), bring together universities, Grandes Écoles and research centres.

The two newest clusters, PSL Formation and Paris-Lumières University, were created at the end of 2012.

	Campus Condorcet	Social studies and Social sciences
	Collegium Ile-de-France	Electronics, Mechanics, Computing and Mathematics
	HESAM (Higher Studies Sorbonne Arts and Trades) <i>55,000 students</i>	Design, Social studies and Social sciences
	Paris-Est University <i>50,000 students</i>	Health and society, Cities and the environment
	Paris-Lumières University	Social studies, Social sciences, Science and Technology
	Paris Sciences et Lettres – Quartier Latin <i>14,000 students</i>	Experimental Sciences, Social studies and Artistic creation
	ParisTech (Paris Institute of Technology) <i>18,900 students</i>	Science and Technology. 12 of the most prestigious engineering and business <i>Grandes Écoles</i>
	PSL Formation	Experimental Sciences, Social studies and Artistic creation
	Sorbonne Paris Cité <i>120,000 students</i>	Social studies, Social sciences, Health, Science and Technology, Economy
	Sorbonne University <i>65,000 students</i>	Law, Economics and Management, Literature and Humanities, Technology, Energy, Living Earth, Biodiversity and the Environment, Life and Health
	UPGO (Paris Grand Ouest University) <i>45,000 students</i>	Information and Communication Technology, Sustainable Development, Communication, Real Estate and Human Resources
	UniverSud Paris <i>60,000 students</i>	Sciences

## THE HIGHER EDUCATION

### World-class universities

École Normale Supérieure d'Ulm<sup>1</sup>, École Polytechnique<sup>1</sup>, University of Paris-Sud<sup>1</sup>, University of Pierre-et-Marie-Curie<sup>1</sup>, University of Paris Diderot<sup>1</sup>, University of Paris-Descartes<sup>2</sup>, University of Paris-Dauphine<sup>2</sup>, École Supérieure de Physique et de Chimie (ESPCI ParisTech)<sup>2</sup> and Mines ParisTech<sup>2</sup> rank among the world's top universities in the **Shanghai Academic Ranking of World Universities** and in the **Times Higher Education Ranking**.

(<sup>1</sup> in both rankings, <sup>2</sup> in Times Higher Education ranking)

### Excellence in Sciences (Shanghai Academic Ranking of World Universities 2012)

- in Mathematics: 3 Paris Region universities in the top 20.
- in Physics: 1 Paris Region university in the top 20.

### Leading business, engineering and political schools

HEC Paris, ESCP Europe, CEMS, ESSEC Business School, INSEAD, École Polytechnique, ENA, Sciences Po Paris, Mines ParisTech and Ecole des Ponts ParisTech are among the best schools in the world according to the **Financial Times** and the **École des Mines ParisTech rankings**.



ESSEC © ESSEC - Photographer: A. Chézières

## Paris Region

- A strong international student presence
- Priority given to higher education and research



# Employment

## A GEOGRAPHICAL AREA ATTRACTING JOBS

- 6 million jobs in 2010
- Share of the population in employment: 61% in 2011
- Over a quarter of the employed population were managers and higher professionals
- 54% of the employed population were between 25 and 44 years old



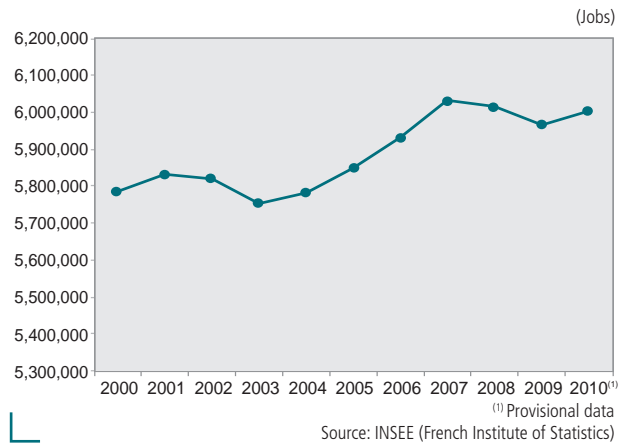
La Défense business district © Paris Tourism Office - Photographer: Jocelyne Genri

(as %)

Employed population by socio-economic group	Paris Region
Managers and higher professionals	26.5
Intermediate professionals	26.1
Non-manual workers	27.7
Manual workers	15.1
Other	4.6
Total	100.0

Source: INSEE (French Institute of Statistics)

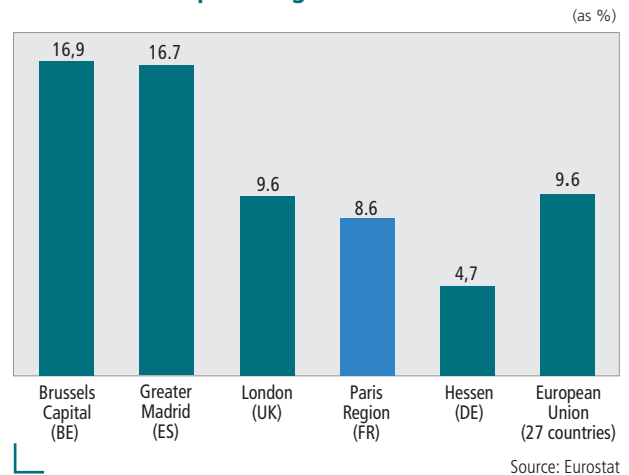
## Employment in Paris Region from 2000 to 2010



## A QUALIFIED FOREIGN POPULATION

- 64% of the foreign population (over 15, i.e. 771,675 people) were in employment (2009)
- 7% of managers were foreigners, half of them from Europe
- 7% of intermediate professionals were foreigners

## Unemployment rate of Paris Region compared with other European Regions in 2011





## Jobs by sector in the Paris Region in 2011

Sector	Jobs
Professional, scientific, technical, administrative and support service activities	795,193
Wholesale and retail trade; repair of motor vehicles and motorcycles	689,240
Transportation and storage	368,104
Information and communication	363,264
Financial and insurance activities	315,959
Construction	273,293
Accommodation and food service activities	269,747
Other manufacturing	184,052
Public administration and defence, education, human health and social work activities	133,207
Other service activities	107,334
Mining and quarrying; energy, water supply, sewerage, waste management and remediation activities	75,880
Real estate activities	75,856
Manufacture of transport equipment	75,360
Manufacture of electrical, computer and electronic equipment; manufacture of machinery	74,622
Manufacture of food products, beverages and tobacco products	46,693
Manufacture of coke and refined petroleum products	1,209

Source: INSEE (French Institute of Statistics)

## Top EU regions in terms of household income in 2009<sup>1</sup>

(in euros per capita)

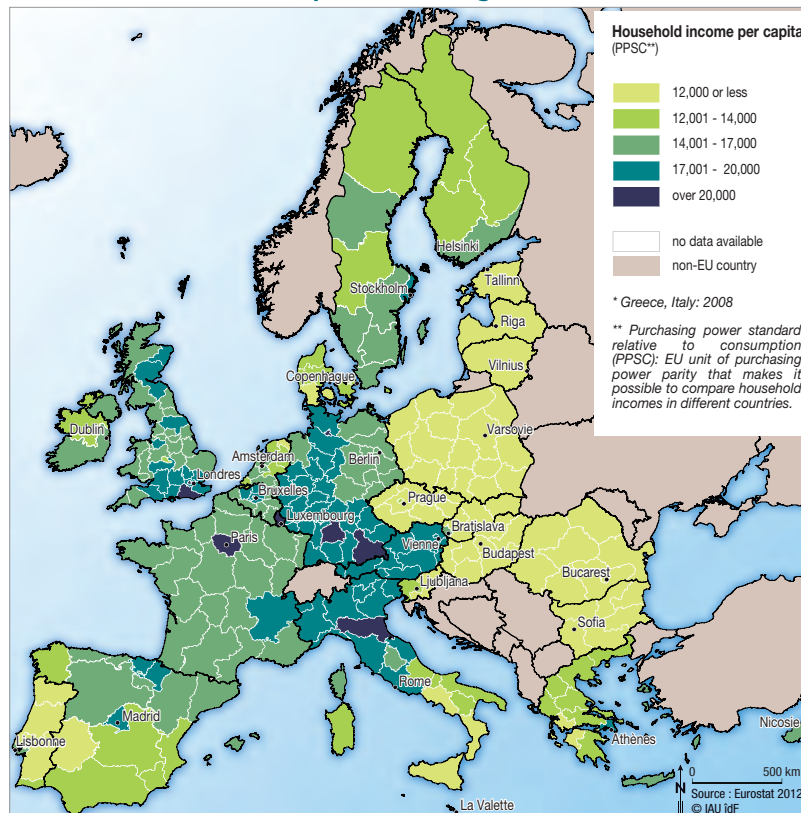
London <sup>2</sup> (UK)	55,807
Paris Region (FR)	29,859
Vlaams-Brabant Province (BE)	29,232
Hambourg (DE)	28,818
Oberbayern (DE)	28,708

<sup>1</sup> Net primary income balance

<sup>2</sup> Inner and Outer London

Source: Eurostat

## Household income in European Union regions in 2009\*



Student welding in a workshop © CCI de region Paris Ile-de-France - Photographer: S. Cambon

## Paris Region

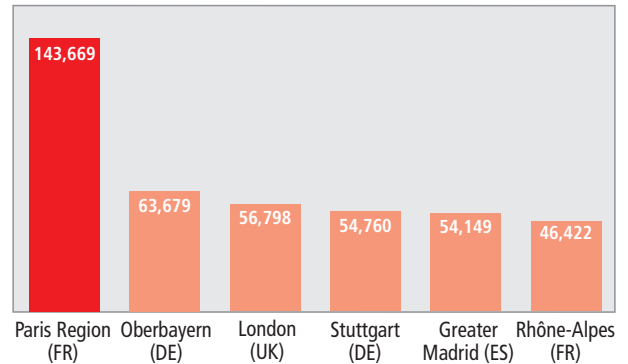
- A highly qualified population
- A highly active population

# Research and Development

## THE PARIS REGION: EUROPEAN LEADER IN R&D

- 7.1% of EU R&D expenditure (2009)
- 5.8% of EU employment in private and public R&D
- 40% of French R&D expenditure (2010)
- 37.2% of French employment in private and public R&D
- R&D expenditure: €17.4 billion, i.e. 3% of the Paris Region GDP
  - 65% private: €11.3 billion
  - 35% public: €6.1 billion
- R&D personnel: 146,300 people including 65% researchers, i.e. 95,500 people:
  - 64% private: 61,100
  - 36% public: 34,400
- 4,649 patents published (2011)
  - 40% in Mechanics and Transport
  - 20% in Chemicals and Life Sciences
  - 20% in Electronics and Electricity
  - 11% in Instrumentation
  - 9% in Others

## Top EU regions in terms of total R&D personnel in 2009 (full-time employment)



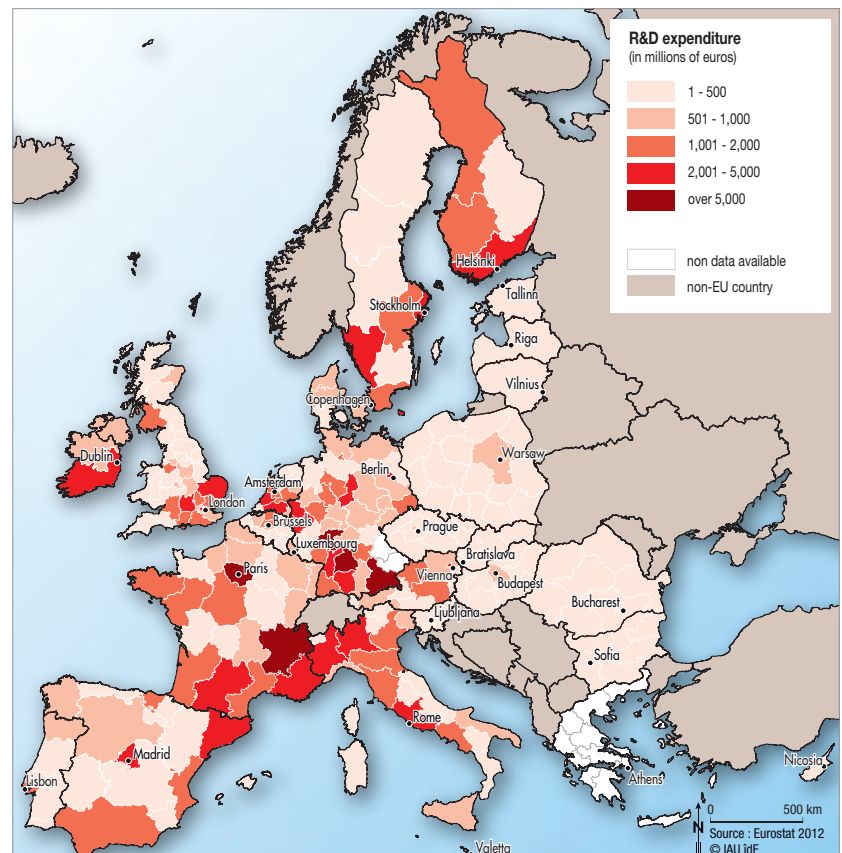
Sources: Eurostat and Ministry of Higher Education and Research

## Top EU regions in terms of R&D expenditure in 2009 (€ million)

Paris Region (FR)	16,898
Stuttgart (DE)	8,549
Oberbayern (DE)	8,067
Darmstadt (DE)	8,549
Rhône-Alpes (FR)	5,054
London <sup>1</sup> (UK)	3,486

<sup>1</sup> Inner and Outer London  
Source: Eurostat

## European Research and Development expenditure by region in 2009



Research centre at the École Polytechnique © ARD-Photographer: P.Aimar (Tendance Floue)



# Research and Development



## Paris Region Competitiveness clusters in 2012

9 competitiveness clusters bring together business, research centres and training institutions to develop synergies and stimulate the emergence of collaborative and, above all, innovative projects.

Cluster name	Sector	Members	Number of projects financed	Total investments (€ million)	Total public sector funding (€ million)
<b>Advancity</b> 	Green technologies and sustainable cities	233 <sup>1</sup>	68	n/a	98
<b>ASTech Paris Region</b> 	Business aviation, space transportation, propulsion systems and equipment	243	36	180	78
<b>Cap Digital Paris Region</b> 	Digital creative industries	700	246	296	125
<b>Cosmetic Valley</b> 	Cosmetics and perfume	284	94	200	41
<b>Elastopole</b> 	Rubber and polymers	94	18	43	24
<b>Finance Innovation</b> 	Financial services	259	9	11	5
<b>Medicen Paris Region</b> 	Innovative therapies and advanced technologies in healthcare	220	206	744	349
<b>Moveo</b> 	Private cars and public transport safe for man and his environment	333	148	722	310
<b>Systematic</b> 	Systems and ICT	669 <sup>2</sup>	364	1,860	640
<b>TOTAL</b>		<b>3,035</b>	<b>1,189</b>	<b>4,056</b>	<b>1,670</b>

<sup>1</sup> of which organisations = 31

<sup>2</sup> of which ETI = 24 and private investors = 20

Sources: Advancity, ASTech, Cap Digital, Cosmetic Valley, Elastopole, Finance Innovation, Medicen, Moveo, Systematic

## Paris Region

- European capital of science and technology
- European leader in R&D expenditure and personnel
- 40% of national R&D expenditure and researchers

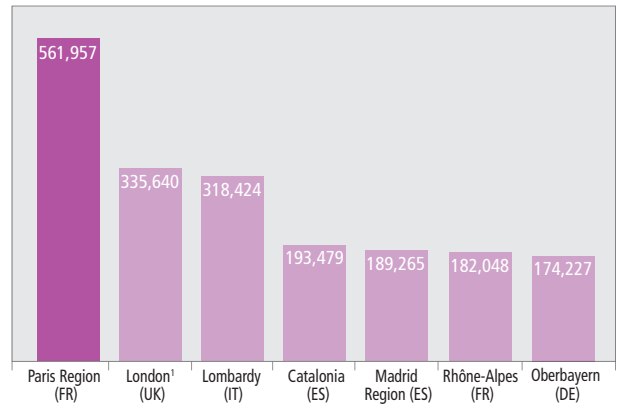
# 

## 

- GDP: €572,400 million in 2010 (€561,957 million in 2009)
- No.1 EU region for GDP in value
- 30.2% of the French GDP and 4.7% of the EU GDP
- GDP per capita: €48,400 in 2010
- GDP per person employed: €95,400 in 2010
- 816,400 companies and 913,000 businesses in 2011

## 

(€ million)

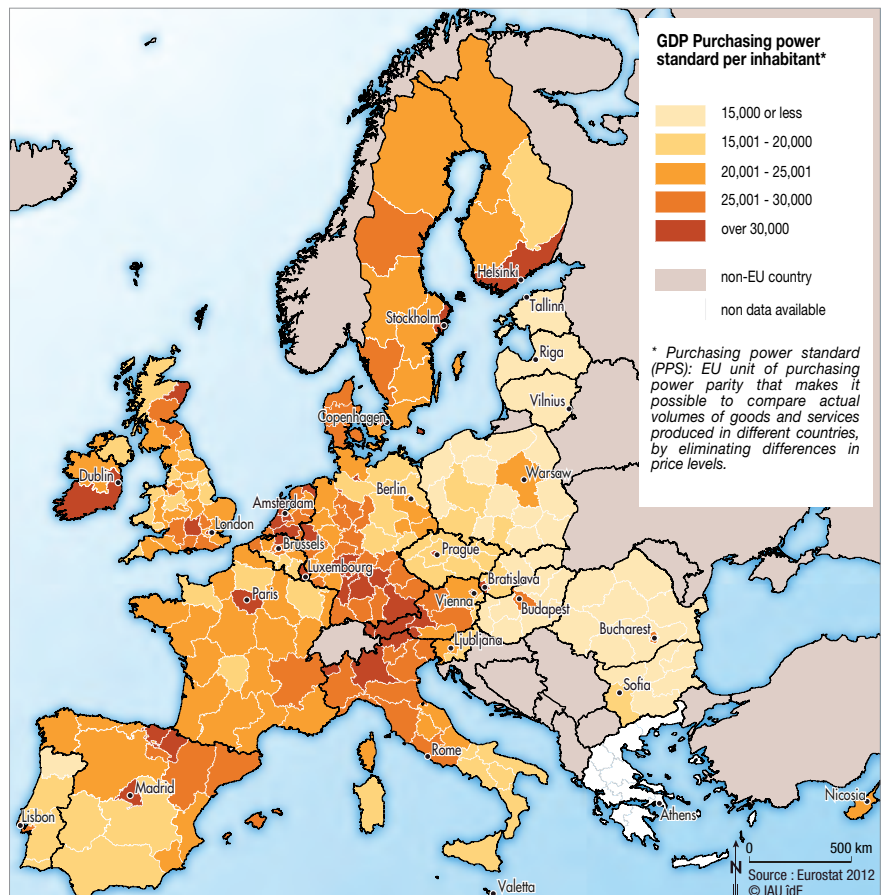


<sup>1</sup>Inner and Outer London  
Source: Eurostat

## 



La Défense district © ARD – Photographer: Pascal Aïmar (Tendance Floue)



# Economic environment



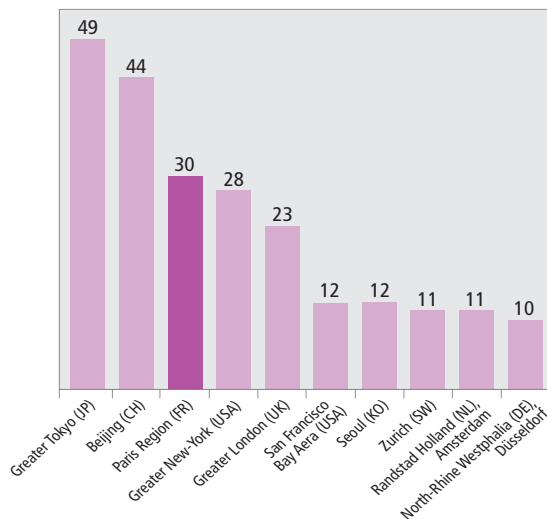
## MAJOR CONTRACTORS AND DIVERSIFIED SME NETWORK

- The Paris Region's wealth-generating, multi-specialist economic profile is unique in Europe
- The Region offers an integrated production environment which combines the presence of majors contractors with an extensive, diversified network of SMEs

## TOP WORLD'S CORPORATIONS

- The world's 3rd largest concentration of Fortune 500 head offices
- 6 Paris Region companies are in the top ten most innovative companies in Europe in Forbes World's most innovative companies

### Number of Fortune 500 head offices by metropolitan region in 2012



Source: Fortune Magazine – Global 500 companies

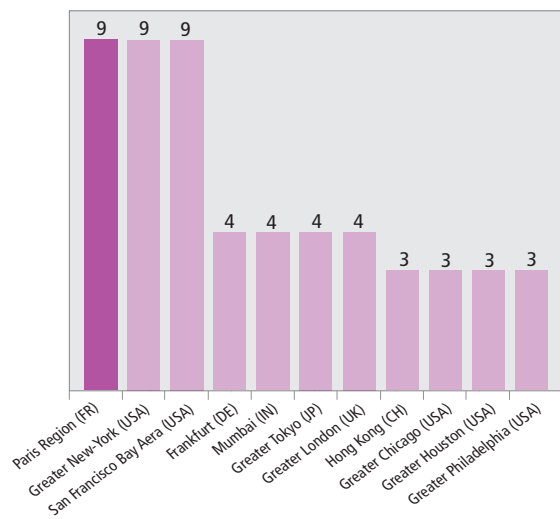
### The largest employers<sup>1</sup> in the Paris Region in 2011

Company name	Regional workforce
SNCF	52,200
La Poste	52,000
Air France	47,700
RATP	43,200
France Télécom	32,700
Société Générale	26,200
BNP Paribas	25,900
PSA Peugeot Citroën	25,600
Renault SAS	20,600
Carrefour Hypermarchés	18,200

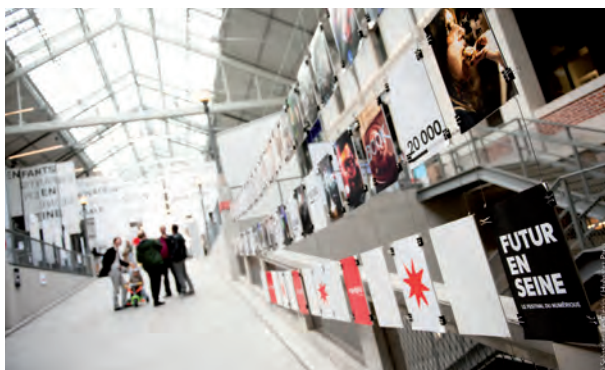
<sup>1</sup> Excluding Civil Service

Source: INSEE (French Institute of Statistics)

### Paris Region at the top of the 100 most innovative companies in the world by metropolitan region in 2012



Source: The world's most innovative companies, Forbes



«Futur en Seine» Festival © Hubstart Paris – Photographer: Sébastien Le Clézio

## Paris Region

- The highest EU GDP
- The presence of all the market leaders
- Leading innovative companies



# ◆ Economic environment

## THE PARIS REGION'S ECONOMY

- Value added: €514,600 million in 2010
- 29.6% of the French value added
- Value added by sector: 0.2% in agriculture and food processing, 12.5% in industry, 87.3% in services
- Paris Region key sectors of excellence and leaders and their leaders
  - Aeronautics, Space, Defence: Dassault Aviation, EADS, Safran
  - Agrofood: Danone, Nestlé, Pernod Ricard
  - Automotive: PSA Peugeot Citroën, Renault
  - B2B Services: Accenture, Gide Loyrette
  - Corporate Meetings and Events: Reed Midem, Viparis
  - Eco-business, Energy: Air Liquide, EDF, GDF-Suez, Veolia Environnement
  - Fashion, Design and Luxury: LVMH, Hermès, L'Oréal, Christian Dior, PPR
  - Finance: BNP Paribas, Crédit Agricole, Société Générale
  - ICT: Alcatel Lucent, Apple, Google, Microsoft, Orange, Thales, Vivendi
  - Life Sciences: Sanofi-Aventis, GlaxoSmithKline, Guerbet, Pfizer
  - Logistics: FedEx, Geodis
  - Tourism: Accor, Disneyland® Paris



Geothermal Power Plant © Hubstart Paris – Photographer: Sébastien Le Clézio



Technocentre Renault - Guyancourt (78) © CCI Paris Ile-de-France - Photographer: Frédéric Gaudichon

## Businesses by sector in the Paris Region in 2011

Sector	Businesses
Professional, scientific, technical, administrative and support service activities	216,876
Wholesale and retail trade; repair of motor vehicles and motorcycles	184,844
Public administration and defence, education, human health and social work activities	90,719
Construction	87,099
Information and communication	60,867
Other service activities	52,615
Accommodation and food service activities	51,441
Real estate activities	47,832
Financial and insurance activities	43,103
Transportation and storage	32,733
Other manufacturing	27,234
Manufacture of food products, beverages and tobacco products	7,113
Mining and quarrying, energy, water supply, sewerage, waste management and remediation activities	6,632
Manufacture of electrical, computer and electronic equipment; manufacture of machinery	3,288
Manufacture of transport equipment	497
Manufacture of coke and refined petroleum products	49

Source: INSEE (French Institute of Statistics)



## AN EXCELLENT TRADING PARTNER

- Imports €132.4 billion / Exports €75.2 billion in 2011
- Main exports: automotive manufacturing (10%), pharmaceuticals (9%) and aerospace industry (7%)
- Main imports: automotive manufacturing (13%), natural hydrocarbons (10%) and computers and equipment (6%)
- The European Union is the Paris Region's main trading partner with 44% of total exports and 56% of total imports
- Germany is the Paris Region's main customer and supplier with 11% of total exports and 15% of total imports

## HOME TO FOREIGN COMPANIES

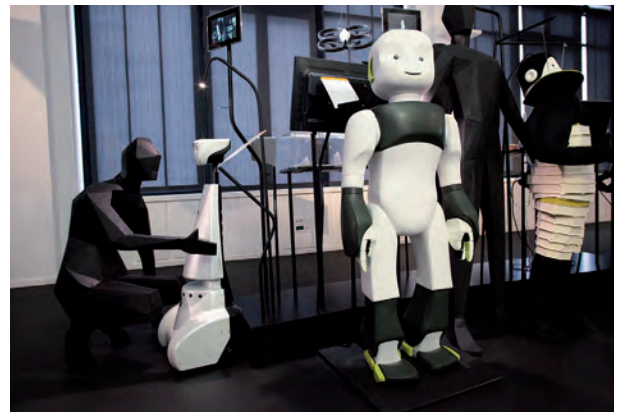
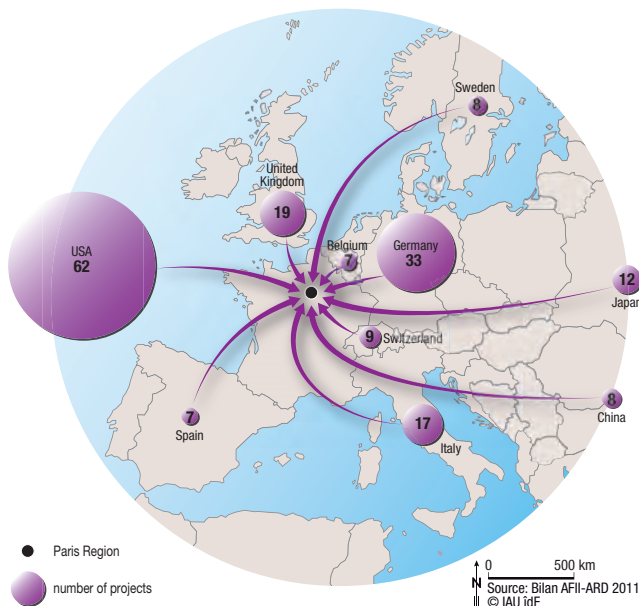
- 16,350 foreign companies in 2010 (26% of the French total)
- Europe's second region in terms of Foreign Direct Investments in 2011
  - Over 230 foreign companies established
  - 65% creations, 30% expansions and 5% takeovers
  - 7,000 jobs created

## Paris Region Top 10 international trading partners in 2011

Exports			Imports		
	Value (€ million)	%		Value (€ million)	%
Germany	8,157	11	Germany	19,757	15
USA	6,217	8	China	17,382	13
Italy	6,157	8	Belgium	14,963	11
Spain	4,908	7	USA	9,469	7
United Kingdom	4,832	6	Spain	9,181	7
Belgium	4,554	6	Italy	7,937	6
Switzerland	4,050	5	United Kingdom	6,061	5
China	2,389	3	Netherlands	4,400	3
Netherlands	2,124	3	Japan	3,514	3
Hong Kong	1,999	3	Switzerland	2,995	2

Source: Paris Region Customs Department

## FDI main countries of origins in 2011



Le Lieu du Design © CRT Paris Ile-de-France — Photographer: Marie Spera

## Paris Region

- A multi-specialized economy
- An important European trading partner
- A region open to international companies

# Meetings, exhibitions and tourism

## LEADING EUROPEAN DESTINATION FOR MEETINGS AND THE EXHIBITIONS INDUSTRY

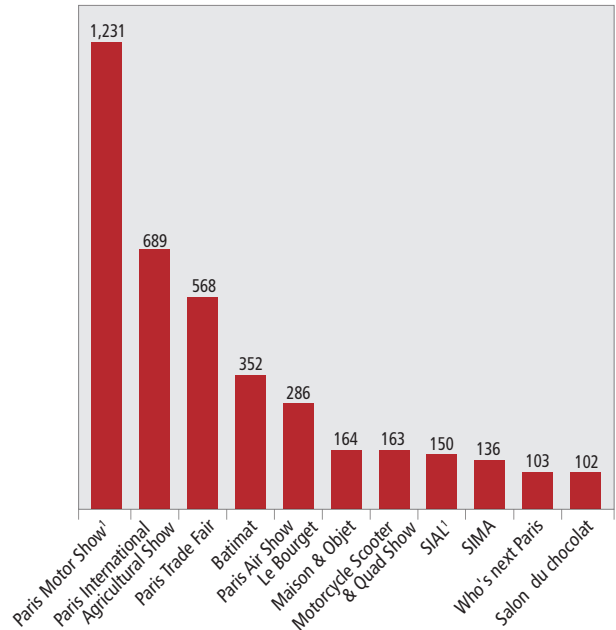
- 680,000 m<sup>2</sup> exhibition capacity: 1<sup>st</sup> place in Europe (2011)
- 402 trade shows, including 202 professional and 200 open to the general public
  - 97,600 exhibiting companies
  - 8.7 million visitors: 75% general public, 25% professionals
- 1,000 congresses: 35% of the French total
- 790,000 congress participants: 50% of the French total
- €4.8 billion economic benefits from tradeshow and congresses



Parc des expositions du Bourget - Seine-Saint-Denis (93) © ARD Pascal Aïmar - Tendence Floue

## Top international tradeshow in the Paris Region in 2011

(in thousands)



Sources: CRT Paris Ile-de-France, www.sialparis.fr, Reedexpo

## Conference and exhibition centres in the Paris Region in 2012





# Meetings, exhibitions and tourism



## ■ TOURISM WAS ONE OF THE REGION'S LEADING ECONOMIC SECTORS IN 2011

- The world's top destination in terms of arrivals and third in terms of tourism revenue
  - Arrivals: 32.7 million, including 13.9 million international tourists
  - Tourism revenue: €12.5 billion
- 96 million total overnight stays
- 73,000 businesses and 518,000 jobs

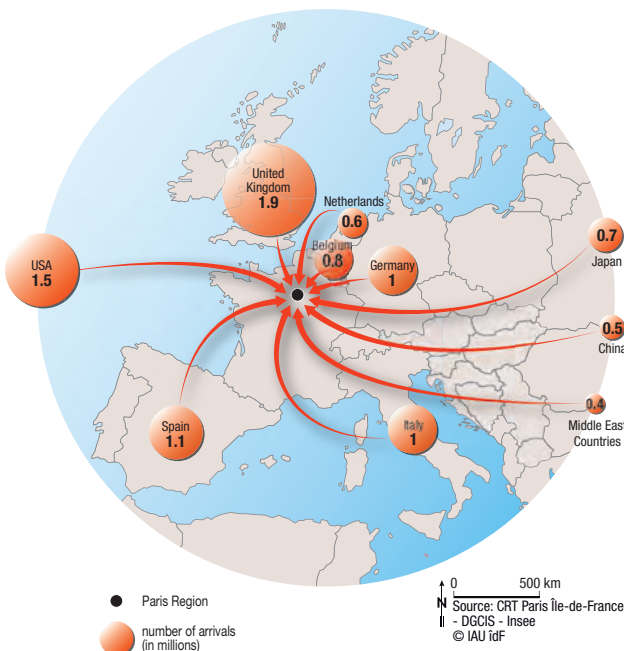
## ■ WORLD'S NUMBER ONE HOTEL CAPACITY IN 2011

- 2,344 hotels including 33% 3-star and 29% 4-star and above
- 151,000 rooms
- 68 million overnight stays in hotels, including 35 million by international tourists

## ■ OFFERING SOME OF THE WORLD'S RICHEST HERITAGE AND CULTURE

- 3,804 monuments and 137 museums
- 350 theatres and 1,000 cinemas
- 4 of the most visited museums in Europe
  - Louvre, the most visited museum in the world
  - Centre Pompidou
  - Musée d'Orsay
  - Grand Palais
- 4 Unesco World Heritage sites
  - Palace and Park of Versailles
  - Palace and Park of Fontainebleau
  - Paris, Banks of the Seine
  - Provins, Town of medieval fairs
- 4 of the 5 national theatres
  - The Comédie-Française
  - Chaillot National Theatre
  - La Colline National Theatre
  - Odéon-Théâtre de l'Europe
- 3 opera houses
  - Opéra Garnier
  - Opéra Bastille
  - Opéra Comique

## Geographic origin of tourists in the Paris Region in 2011



## The most visited attractions in the Paris Region in 2011

	Visitors
Disneyland® Paris	15,600,000
Notre-Dame de Paris <sup>1</sup>	13,650,000
Sacré-Cœur de Montmartre <sup>1</sup>	10,500,000
Louvre Museum	8,800,000
Eiffel Tower	7,086,000
Palace and Park of Versailles	6,746,000
Centre Pompidou	3,612,000
Cité des sciences et de l'industrie	2,654,000
Arc de Triomphe	1,583,000

<sup>1</sup> Free entrance

Source: CRT Paris Ile-de-France

## Paris Region

- The most popular tourist destination in the world
- Europe's No. 1 destination for meetings and the exhibition industry

# Transport

## REGIONAL MOBILITY

- Public transport
  - Train network: 1,167 million trips/year
  - Transilien (Regional train): 8 lines
  - RER (Regional Express Train): 5 lines
  - Metro: 14 lines, 1,524 million trips/year
  - Tram: 4 lines, 114 million trips/year
  - Bus: 1,449 lines, 1,332 million trips/year
  - All modes: 4,337 million trips/year
- Transport on demand, available 24/24
  - Velib: 1,800 hire points and 20,000 bicycles
  - Autolib: 1,100 hire points and 1,740 cars
  - 17,140 taxis
- Road network in 2011
  - 605 km of motorways
  - 10,200 km of roads
  - 2,600 km of cycle lanes
- Waterways
  - 70 ports
  - 10 multimodal platforms (rail, road, river, oil pipeline)
  - 500 km of navigable rivers
  - 170 km of canals

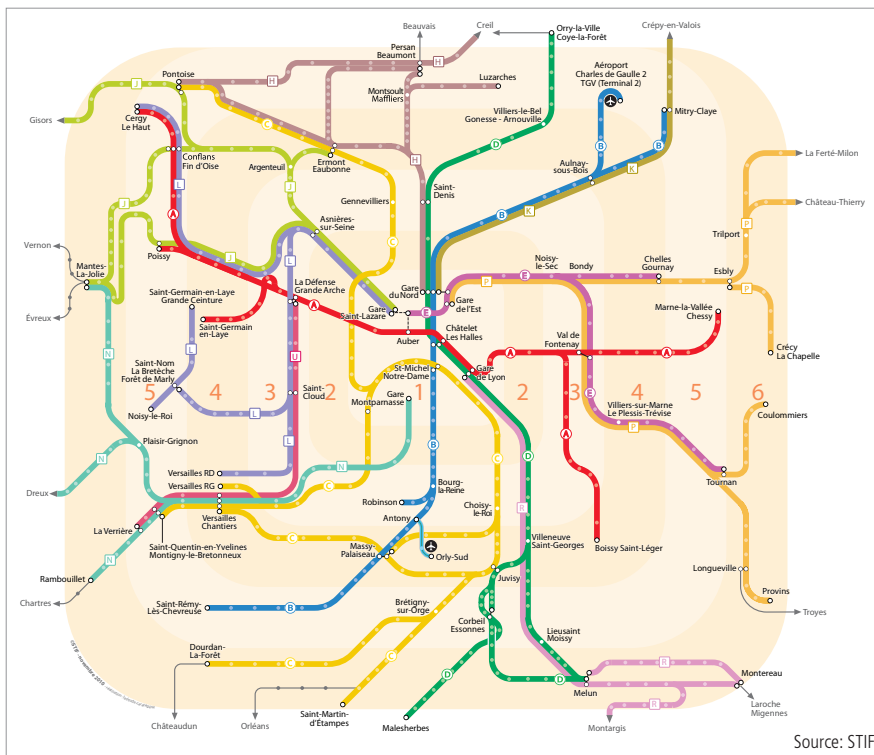
## MORE AND MORE SUSTAINABLE TRANSPORT

- 25 million daily journeys by foot, bicycle and public transport
- In the period 2001-2010:
  - Public transport use + 21%
  - Bicycle trips multiplied by 2
  - 63 «30 km/h» zones in Paris



Autolib © IAU – Photographer: Benoît Basset

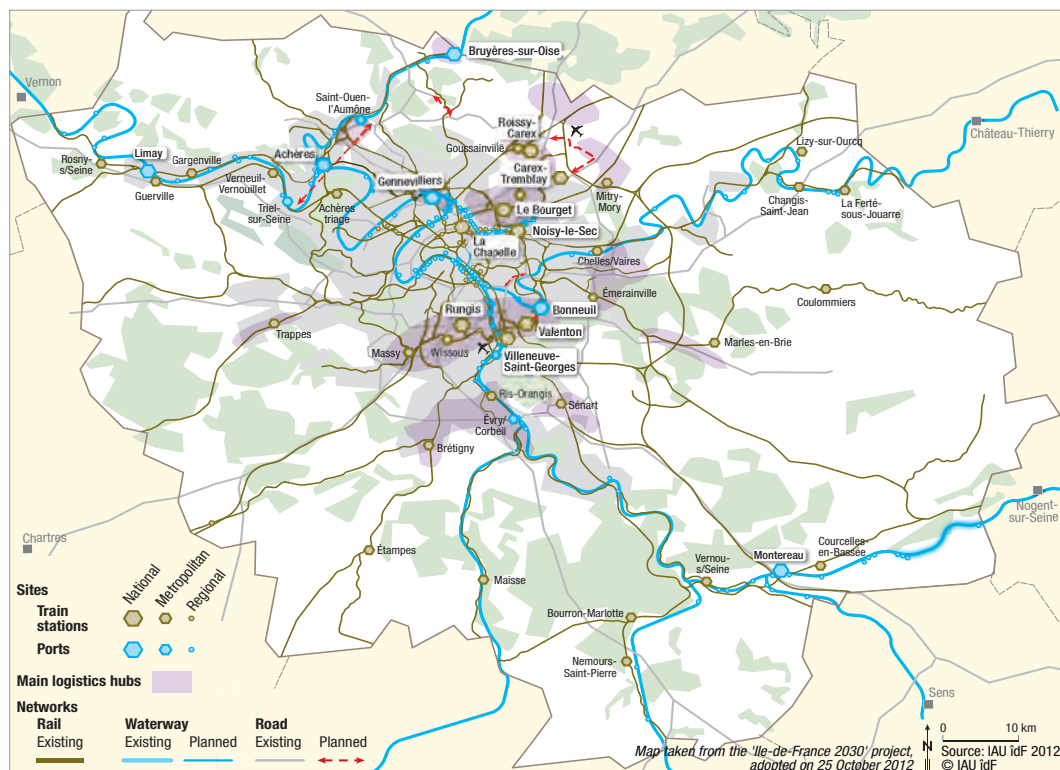
## Transilien and RER network



Source: STIF



## Logistic infrastructures and projects in the Paris Region in 2012



### INTERNATIONAL MOBILITY

- 2 international airports: 88.8 million passengers, 721,900 flights in 2012
  - Paris-Charles de Gaulle: 61.6 million passengers, 491,300 flights; 2nd in Europe in terms of passenger traffic
  - Paris-Orly: 27.2 million passengers, 230,600 flights; 11th in Europe in terms of passenger traffic
- Europe's leading business aviation airport: Paris - Le Bourget, 58,000 flights
- 10 civil airfields for general aviation: 650,000 flights in 2011
- 1 heliport
- 7 High-speed train stations (TGV): Aéroport CDG2 TGV, Gare de Lyon, Marne-la-Vallée Chessy, Massy TGV, Paris-Est, Paris-Montparnasse and Paris-Nord
- 1,811 km of lines in 2012
- 18 million passengers by TGV from the Paris Region to European destinations in 2011
- Paris Region linked to 253 stations including 53 international stations: London, Amsterdam, Brussels, Düsseldorf, Frankfurt, Zurich, etc.

### FREIGHT IN 2011

- Air: 2.4 million tonnes
- Road: 23.6 billion tonnes-kilometers transported
- Train: 23.3 billion tonnes-kilometers transported
- Waterway and maritime: 22.3 million tonnes (+7.1% between 2010 and 2011)



River transport on the Seine © ARD - Photographer: Gilles Coulon (Tendance Floue)

## Paris Region

- A uniquely dense network of passenger and freight transport
- Efficient and diversified internal and external transport infrastructures



# Real estate

## ■ EUROPE'S LEADING COMMERCIAL REAL ESTATE

- 52 million m<sup>2</sup> of office space
- 30 million m<sup>2</sup> of business space
- 29 million m<sup>2</sup> of warehouse space

## ■ PARIS REGION REAL ESTATE VERY ATTRACTIVE IN 2012

- €11 billion invested in real estate
- Office orders placed:
  - 2.4 million m<sup>2</sup> in the Paris Region, including 2 million m<sup>2</sup> in Central Paris
- 3.6 million m<sup>2</sup> available office space

## ■ A COMPETITIVE LOGISTICS CENTRE

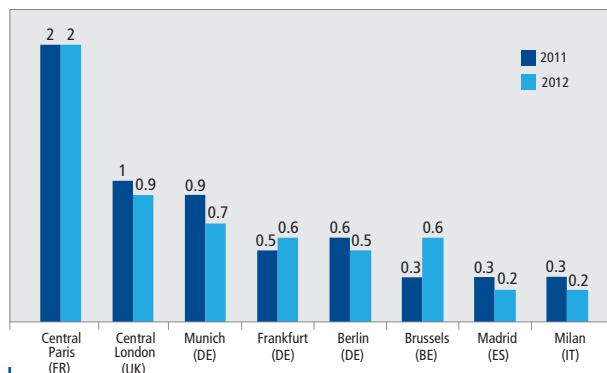
- 29 million m<sup>2</sup> of warehouse space
- Warehouse space (>5,000m<sup>2</sup>) orders placed in 2012: 443,200 m<sup>2</sup>
- Extremely competitive rents: prime rents in 2011, excluding tax and building charges:
  - Paris Region: €53/m<sup>2</sup>/year
  - Frankfurt €74, Hamburg €67, Madrid €78, Amsterdam €90, London €159



Plateforme de Gennevilliers @ Ports de Paris

## Office take-up: European comparisons in 2011 and 2012

million m<sup>2</sup> (1m<sup>2</sup> = 10.8 sq.ft)



Source: Immostat



Hôtel Descartes © Vincent Gollain



## ■ APPROPRIATE HOSTING SOLUTIONS

- Over 100 business incubators, including 13 specially for international companies
- 1,350 business activity areas in 2011 over 27,000 ha (surface including all existing BAA including areas currently being marketed)
- 27 coworking spaces in 2011

## ■ A DIVERSIFIED HOUSING OFFER

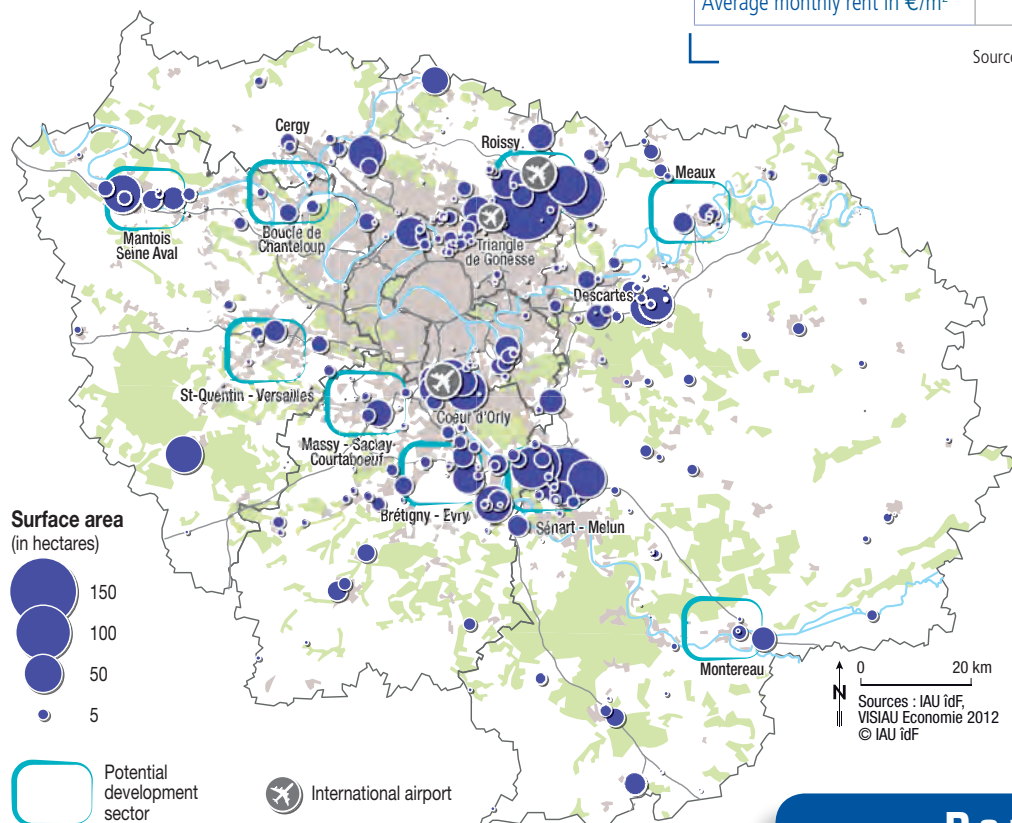
- 5,420,000 homes of which 27% detached houses
- 493 HQE (Higher Quality Environmental) buildings
- 46 low-energy-houses (BBC label) and a further 36 in planning
- 25 energy-plus-houses
- 1,539 km heating network in the Paris Region, i.e. equivalent to 1.2 million houses providing nearly 15 million MWh

## Average rental value in 2011

	Paris	Inner Suburbs	Outer Suburbs	Paris Region
Average surface area in m <sup>2</sup>	51	53	60	54
Average monthly rental in €	1.060	835	776	909
Average monthly rent in €/m <sup>2</sup>	20.8	15.7	12.9	16.9

Source: OLAP (Paris Region Monitoring Agency)

## Business activity areas: surface areas available in 2012



## Paris Region

- No. 1 in Europe for office space
- A dynamic and innovative region for real estate investment

# Quality of life

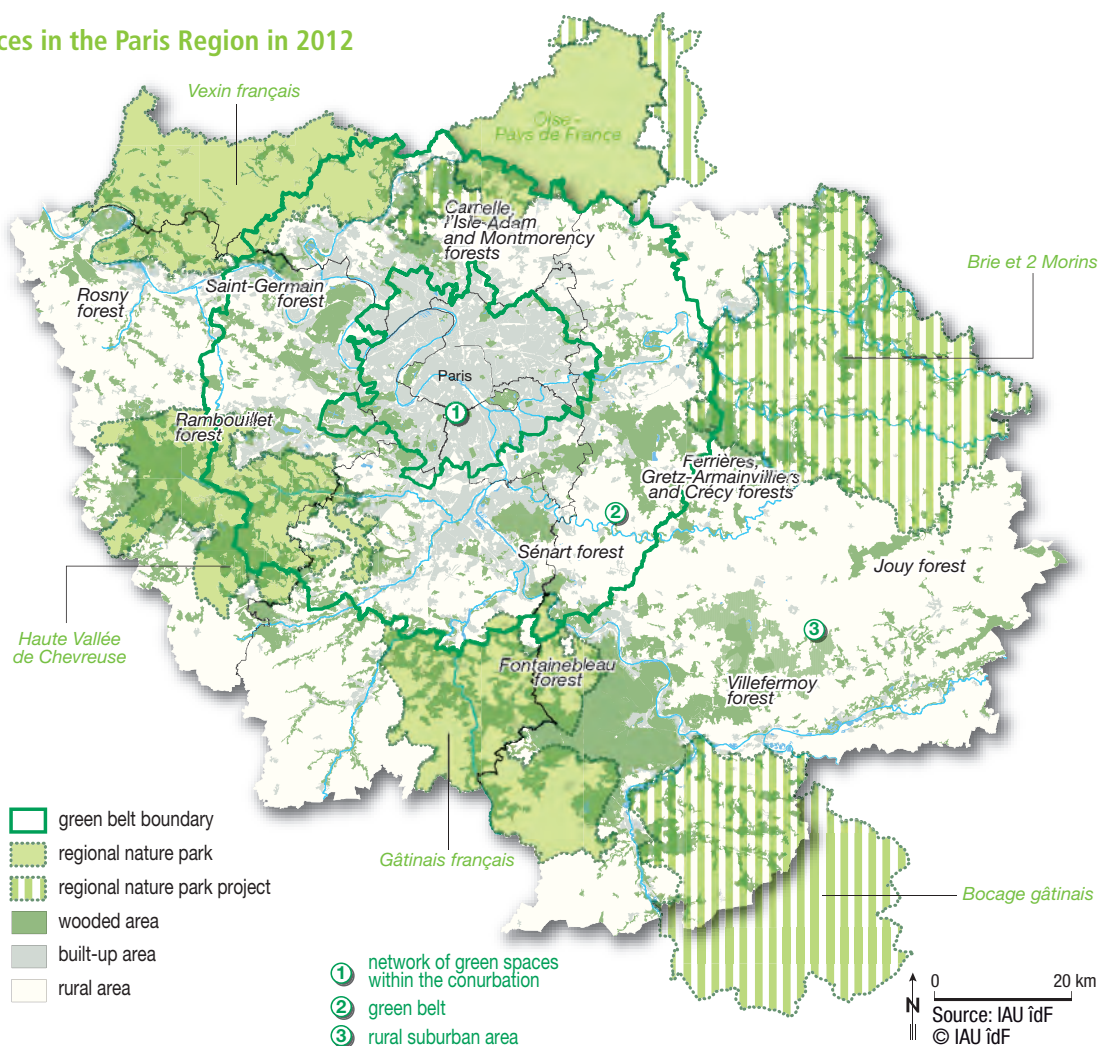
## A GREEN REGION

- 80% of the region is comprised of natural areas primarily dedicated to agriculture and forest
- 48% of the area is devoted to farming
- 4 regional nature parks
- 35 sites listed Natura 2000 (ecological network of protected areas in the European Union) in 2012, including 10 bird sites and 25 habitat sites: 8% of the Paris Region land area
- 1,000 ponds and 4,440 km of rivers and streams

## A HEALTHY ENVIRONMENT

- A temperate climate with mild winters and summers
- Significant reduction of all pollutants between 1998 and 2010:
  - Nitrogen oxide (NOx): -37%
  - Nitrogen dioxide (NO2): -27%
- Total rainfall in 2011: 642 mm

### Major open spaces in the Paris Region in 2012





## ■ A GOOD QUALITY OF CARE

- 77,000 medical centres and 48,000 doctors available
- Europe's No. 1 hospital network (Assistance Publique - Hôpitaux de Paris): 37 hospitals
- Hospital capacity: 66,000 beds
- Life expectancy: 85 years for women, 79.5 years for men

## ■ INTERNATIONALLY RENOWNED GASTRONOMY

- 152 Michelin-starred restaurants, 21 of which with three stars
- «The gastronomic meal of the French» was listed on the Representative List of the Intangible Cultural Heritage of Humanity by Unesco in late 2010
- Rungis international market: the world's biggest fresh produce market

## ■ AN ENERGETIC REGION

- 100 golf courses
- 400 equestrian centres
- 200 hiking circuits
- 5,800 tennis courts
- 3,000 sports halls
- 400 swimming pools



Parc du Tremblay © CRT Paris Ile-de-France - Photographer: N.Revelli-Beaumont (Sipapress)

## ■ MAJOR SPORTING EVENTS

- Prix d'Amérique: biggest harness race held at the Vincennes Hippodrome.  
Equitation in the French tradition on the Representative List of the Intangible Cultural Heritage of Humanity inscribed in 2011
- Trophée Eric Bompard: International figure skating competition
- Paris Masters: Annual tennis tournament
- French Open, often referred to as Roland Garros: first clay court tennis tournament in the world and the second of the four annual Grand Slam tournaments
- Golf Ryder Cup in 2018
- Football Euro 2016 in the Stade de France
- Rugby RBS 6 nations in the Stade de France

## ■ CULTURAL VITALITY

- 46 foreign cultural centres: Paris is the world capital with the largest number of foreign cultural centres: from Latin America to Europe, Russia, Middle east, India and Asia
- 19,764 pop and contemporary music shows in 2010
- Many music festivals: Solidays, Rock en Seine, Jazz à la Villette
- Major exhibitions in 2013: Marc Chagall, between war and peace (Luxembourg museum), The Year of Le Nôtre (Palace of Versailles), Keith Haring (Museum of Modern Art), Monumenta 2013 (Grand Palais), Roy Lichtenstein: A Retrospective (Centre Pompidou), Art Deco, the French style that took the world by storm (Cité de l'architecture et du patrimoine)

## Paris Region

- A quality of life acknowledged worldwide
- A vibrant, dynamic and cultural region



# IAU île-de-France

## Paris Region Urban Planning & Development Agency

### Analysis, ideas, projects

In organisational terms, IAU île-de-France has six main specialist divisions - sustainable planning, urban and regional development, mobility and transport, urban and rural environment, the economy and local development, demographics and housing - plus a number of dedicated units (documentation centre, communication, health, urban safety, and sport).

### Project management for development plans in Paris Region

IAU île-de-France works closely with the regional authorities, assisting them in drawing up their development plans: exploring challenges and development options, promoting participatory processes and public enquiries, and producing draft development plans.

### Networks, partnerships, missions abroad

IAU île-de-France is constantly adapting to a changing environment, looking to the future and pinpointing the long-term changes expected in the region. It is actively involved in a wide range of networks and partnerships, giving it access to additional resources and expertise. IAU île-de-France has been already active in around 40 countries through contracts and cooperation agreements.

### An information hub and communications resource

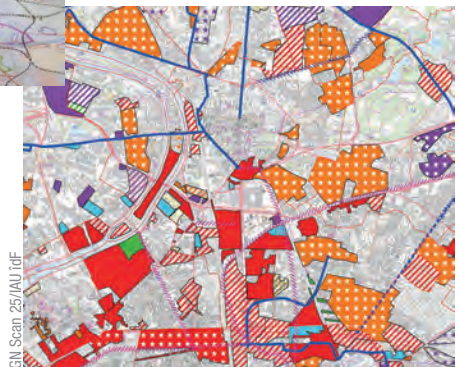
In the framework of its public relations policy, IAU île-de-France also produces a wide range of publications, available online at [www.iau-idf.fr](http://www.iau-idf.fr)

IAU île-de-France has developed various databases integrated within its regional geographical information system (RGIS) and this information is available on its website in the form of interactive maps.



C. Lauret/IAU îdF

**A 200-strong multidisciplinary team with expertise covering all aspects of planning**



IGN Scan 25/IAU îdF



**Institut d'aménagement  
et d'urbanisme d'Île-de-France**  
15, rue Falguière  
75740 Paris CEDEX 15  
Tél. +33 (0)1.77.49.77.40

**Chairman**  
IAU île-de-France is chaired  
by Jean-Paul Huchon,  
Chair of the Île-de-France  
Regional Council

**Managing Director**  
François Dugeny

**Serving you: what we do best!**

Whether you're a business leader, decision-taker, apprentice, student or employee, the Paris Ile-de-France Regional CCI is another driver of your project's success.

**Grow your business**

In areas such as setting up or passing on a business, human resources, regulation and international development, the specialist advisers of the Paris Ile-de-France CCI network know your needs and are by your side to give you support. Meet them in the two territorial CCIs in Seine-et-Marne and Essonne and in the six departmental CCIs in Paris, Versailles-Yvelines, Hauts-de-Seine, Seine-Saint-Denis, Val-de-Marne and Val-d'Oise.

**Expand your horizons**

Organising over 1,000 exhibitions, conventions and specialised business events each year, the Paris Ile-de-France CCI provides you with a great showcase to help you grow your business, both in France and abroad.

Whether you want to meet customers, contact partners, publicise a brand or product or find out about the latest innovations in a particular line of business, you benefit from one of the finest promotion and benchmarking environments in the world.

**Unleash your talents**

Trained in the 25 schools that make up the Paris Ile-de-France CCI campus, your future employees are directly operational because they have received training that meets the business community's expectations. For your existing employees, the Paris Ile-de-France CCI has designed continuing education programmes for all areas of business operations, combining both academic and entrepreneurial approaches.

**Make your voice heard**

With its elected officials (all of them people who run businesses) and experts, the Paris Ile-de-France CCI is a key partner for local, national and European authorities.

On issues such as taxation, employment law, business financing and regional development, the Paris Ile-de-France CCI is a frontline organisation that speaks for the business community in order to ensure that their expectations are consistently taken into account.

**Chambre de commerce et d'industrie de région Paris Ile-de-France**

27, avenue de Friedland - 75382 Paris cedex 08

Tel. 0820 012 112 (0,12 euro/minute)

[www.cci-paris-idf.fr](http://www.cci-paris-idf.fr)

**WELCOME TO  
EUROPE'S LEADING  
ECONOMIC CENTRE**

# PARIS REGION

**Business, innovation, excitement!**

Set up in the Paris Region and be at the heart of one of the world's leading economic areas, close to key decision-makers.

**Growing your business in Europe?**

Locating to the Paris Region **to boost your international presence?**

**Ensure the set-up process goes smoothly** with the help of the Paris Region Economic Development Agency – the organisation dedicated to your success.

**services@paris-region.com**  
**www.paris-region.com**  
**<http://twitter.com/ParisRegion>**



Eiffel Tower © cdroom - Fotolia.com