

KEY FIGURES PARIS-SACLAY 2018



PARIS-SACLAY
INNOVATION
PLAYGROUND

PARIS
REGION

ECONOMY



427,600 jobs
8% of jobs in the Paris Region

71,000 companies

45,000 jobs are in research, design & innovation
16% of jobs in the Paris Region in R, D & I

59 % of jobs are found in companies employing more than 100 workers (Regional average is 50%)

168 Business Parks totaling **4,100 ha**
13% of total land area dedicated to Business Parks in the Paris Region

5 million m² office space
9% of total office space in the Paris Region

450,000 m² of new office developments to 2020

35 innovation workspaces (co-working spaces, incubators, accelerators, fab labs...)

58,400 workers are employed by **foreign-owned companies** (19% of total workers)

15 FDIs in 2016

Sources: IAU îdF 2017 ; Insee, Clap 2014 & 2015, Esane, Lfi ; ORIE 2017

KEY INDUSTRIES



Information & Communication Technologies

32,000 workers
550 companies

Ericsson
Nokia
HP
Atos / Bull

Health

15,000 workers
130 companies

Sanofi
Ipsen
LFB
GE Healthcare
Boston Scientific

Mobilities of the Future

28,000 workers
130 companies

Renault
Valeo
PSA
Fiat

Aerospace, Security & Defense

30,000 workers
60 companies

Airbus
Safran
Thalès
Dassault Systèmes

Smart Energy Management

17,000 workers
31 companies

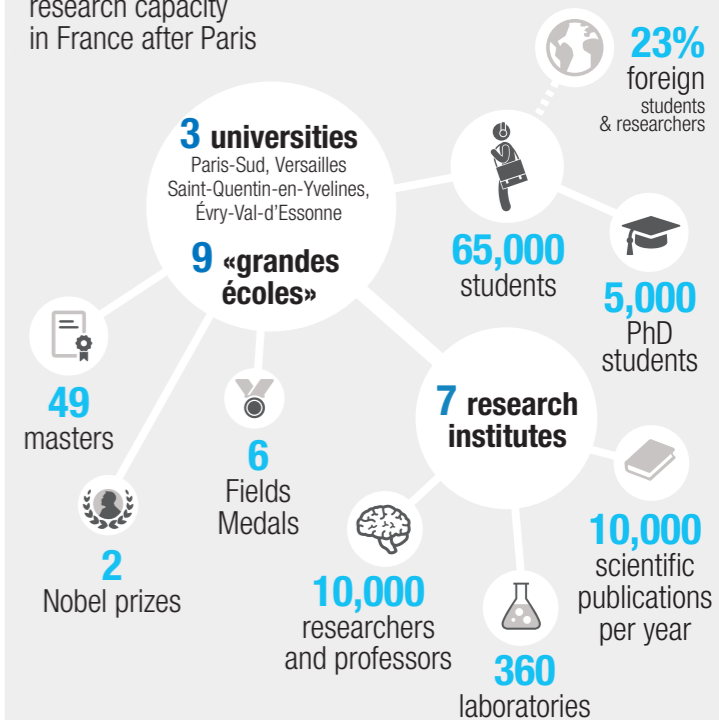
EDF
Siemens
CEA
Air Liquide
Bouygues

Source: EPA Paris-Saclay 2015

EDUCATION, SCIENCES & TECHNOLOGIES

The **2nd** largest concentration of scientific research capacity in France after Paris

15% of French scientific research capacity



Source: Université Paris-Saclay 2017

WORKFORCE



412,800 economically active people

376,000 of whom are **employed**



46% of active people aged 15 and over are **graduates**
This is 6 points higher than regional average

Unemployment rate: **8.9%**
This is 3 points lower than regional rate



34% of economically active people are managers and professionals
This is 5 points higher than regional rate

Sources: Insee, RP 2013 & 2014

TRANSPORTATION



Air traffic

Paris Only International Airport
32 million passengers

3 aerodromes including Toussus-le-Noble business aerodrome

Railway

Massy TGV railway station
Direct connection with Roissy-CDG
100,000 travelers per day

5 commuter/suburban lines
45 stations
1 tramway

Line 18 of the Grand Paris Express automated metro system will serve Paris-Saclay area and connect it to Orly International Airport

Road network

3 motorways
3 trunk roads

more than **200 bus lines**
9 km bus-only lanes

Sources: ADP ; Île-de-France Mobilités ; IAU îdF ; SNCF ; SGP

QUALITY OF LIFE



281 km² of forest & agricultural land (51% of total land area)



16% of the Paris-Saclay area is in the Haute Vallée de Chevreuse **regional natural park**

Tourist, sports and cultural facilities

Versailles Palace

1 national velodrome

11 schools of performing arts

1 national golf course

52 public libraries

38 music venues & theatres



254 km of bikeways

International Schools

9 schools have international sections



3 private international schools

Sources: EPA Paris-Saclay ; IAU îdF 2017

pictogrammes © 123rf / lemercy, © IAU îdF

As one of the major urban projects of Grand Paris, what is unfolding at Paris-Saclay is a three-pronged development drive, encompassing **businesses, higher education** and **research institutions**, as well as vital new neighborhoods.

The project offers a unique opportunity to build a **smart and sustainable city** integrating new services and cutting-edge technologies for low impact mobility, energy and resource efficiency.

The French state, the Regional council and local authorities are working closely together to make this national interest operation a balanced regional development project. They are boosting the cluster's development with an unprecedented financial effort into University building projects and research laboratories and facilities, plus the planned construction of Line 18 of the Grand Paris Express Metro. They are mobilizing industry players to **enhance ecosystems and stimulate growth around strategic sectors**.

Major groups are thus collaborating and cross-fertilizing with a large number of innovative SMEs and start-ups in the area, making the cluster uniquely equipped to adapt to the new innovation models of the 21st century.

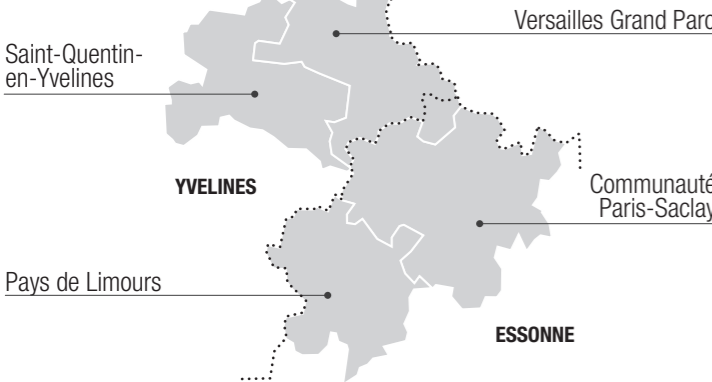
The ambitions and the scientific and economic excellence of Paris-Saclay make it a **high potential area for investing and developing businesses**.



PARIS - SACLAY

INNOVATION PLAYGROUND

4 inter-municipal cooperation bodies
2 DEPARTMENTS



A world-class science cluster

- Higher education institutions
- Research institutes
- Major science facilities

- 1 VeDeCom, Ifsttar
- 2 Nano'Innov : CEA-List, Systematic, IRT System'X

A vibrant economic hub

- Business districts
- Private R&D clusters
- Business parks
- Major development sites

- Other development projects:
- 1 Massy- Wissous-Orly
 - 2 Courtabœuf
 - 3 La Verrière / pôle Gare Bécancennes
 - 4 Corridor ferroviaire
 - 5 Clef de Saint-Pierre
 - 6 Inovel Parc

An excellent transport connectivity

International connectivity

- Paris Orly International Airport
- Aerodromes
- High-speed train stations

Regional connectivity

- Suburban railways
- Motorways & major trunk roads
- Bus rapid transit
- Tramways

Grand Paris Express project

- New automated rapid transit network

A high-quality living environment

Iconic site

- Palace & Park of Versailles

Tourist facilities

- Tourist sites (museums, castles, leisure parks...)
- Convention & Exhibition Centres

Cultural facilities

- National Theatre
- Music & performing arts centers

Sports facilities

- Velodrome
- Golf courses
- Rugby
- 2024 Summer Olympics venues

Retail facilities

- Shopping malls

Existing land use

- Urban
- Forest
- Agriculture
- Regional Natural Park
- Agricultural & Natural Protection Area
- Water bodies

