

# Paris Region Key Figures 2017



Paris, the Banks of the River Seine  
© Paris Tourist Office / Sarah Sergent



Versailles - The gardens  
© Christine Tarquis



Genopole (Essonne)  
© Genopole / A. Da Silva



Rungis © A. Potignon /  
CCI Paris Ile-de-France



Transport RER, Bridge of  
the Seine River, Rueil Malmaison  
© CRT Paris Ile-de-France /  
Jarry Tripelon



Pilot children's space  
© Musée de l'Air et de l'Espace /  
Alexandre Fernandes



International Paris Air Show  
© David Delaporte / CCI Paris Ile-de-  
France

INSEAD Business School  
© Tendance Floue / Pascal Aimar







## WELCOME TO PARIS REGION, HOME OF BUSINESS OPPORTUNITIES

Paris Region Key Figures 2017 lays out a panorama of the region's economic dynamism and social life, positioning it among the leading regions in Europe and worldwide.

With its fundamental indicators, the brochure "Paris Region Key Figures 2017" is a tool for decision and action in favor of enterprises and economic stakeholders. It is useful to economic and political leaders of the region and to all those who want to have a global vision of the dynamic regional economy.

Paris Region Key Figures 2017 is a collaborative publication produced by Paris Region Entreprises, the Paris Île-de-France Regional Chamber of Commerce and Industry and the Paris Region Urban Planning and Development Agency (IAU Île-de-France).





5

WELCOME TO PARIS REGION



6

OVERVIEW



8

POPULATION



10

EDUCATION



12

R&D AND INNOVATION



15

ECONOMY AND BUSINESS



20

EMPLOYMENT



22

TRANSPORT AND MOBILITY



24

LOGISTICS



26

REAL ESTATE



28

MEETINGS AND EXHIBITIONS



30

TOURISM AND QUALITY OF LIFE







## PARIS REGION, A MAJOR BUSINESS HUB IN EUROPE

Standing at the crossroads of European and worldwide trade, Paris Region is France's leading economic region and one of Europe's foremost business hubs.

Its economy is that of a major urban region structured around the capital city and bearing all the hallmarks of an efficient metropolitan economy, namely: size, a diverse production base and real estate offering, world-class infrastructure, a cosmopolitan and qualified workforce and a wealth of cultural amenities.

### Its main assets:

- The highest GDP in the European Union (EU28) in billions of euros: **30.3% of the French nation's GDP** and **4.6% of the EU28's GDP**, ahead of Greater London and Lombardy (Italy).
- Concentration of jobs, corporate headquarters, SMEs/SMIs, technology companies, business start-ups, world-class competitiveness clusters, foreign groups...
- Its **wide range of business sectors**, its deep-rooted industrial tradition, and one of the highest concentrations of activity in the science and technology sectors
- A consumer marketplace of considerable importance: **12 million inhabitants**, **8.3 million visitors** in the Region's main conference and exhibition centers, **47 million tourists**.
- A young, cosmopolitan, and talented population, and a highly qualified workforce: **18.2% of France's population**, **26.5% of students in France** (the largest concentration of students in Europe), and **23.1% of jobs in France**.
- **Internationally renowned for excellence in education, science and technology** (top business, engineering and specialized higher educational institutions, Fields medals, Nobel prizes, innovative companies).
- **World-class infrastructure, to ensure the seamless flow of people, goods, capital and data.**  
**Europe's second-largest airport:** all major European cities are within 2 hours by plane.  
**Most efficient public transport** with a highly developed railway and regional transport network, which will be considerably enhanced by investments undertaken with the Grand Paris development project.  
**Europe's number one road network.**  
**Number two regional river network in continental Europe**, with 70 ports dotted along 500 km of navigable waterways.  
**An excellent broadband communication network.**
- **The largest stock of commercial property in Europe** and attractive and diversified real estate, with new office districts and business parks, as well as the opening of "start-up factories".
- **A rich heritage and a dynamic center for cultural and business events.**  
Paris Region, and in particular inner Paris itself: a city of art, history and culture, is **the world's leading tourist region**, highly attractive to international tourists and a leading location in Europe for meetings and business events. With 700,000 m<sup>2</sup> in exhibition space, **Paris Region leads Europe in available surface for trade exhibitions** and **Paris is ranked N°2 in the world for welcoming visitors and world-class business meetings**.

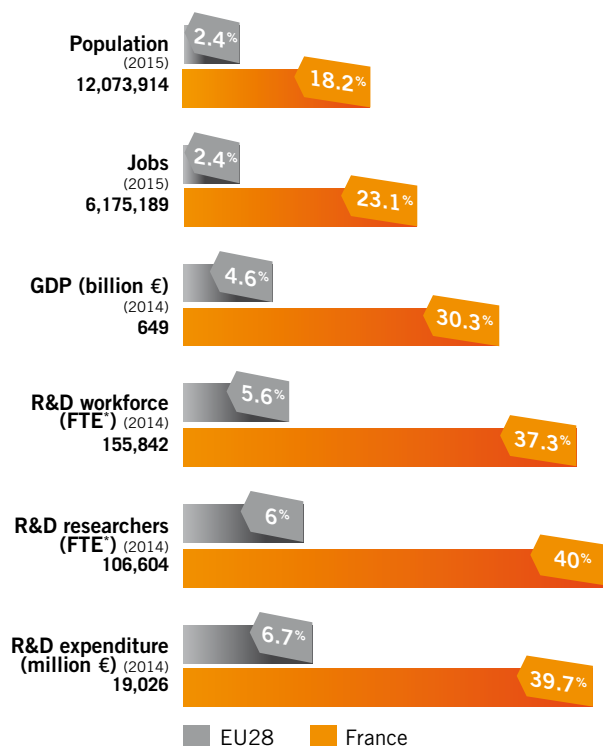


André Citroën Park © CRT Paris Ile-de-France / Jarry-Tripelon



**One of Europe's  
leading economic  
and innovative  
regions**

## PARIS REGION vs. FRANCE & EUROPE



\* Full Time Equivalent

Source: INSEE, Eurostat, Ministry of Education,  
Higher Education and Research

## PARIS REGION IN THE EUROPEAN UNION AS OF 01.01.2017



## AN INTERNATIONAL REGION

**1.6 million** foreigners (13.1% of the population) (2013)

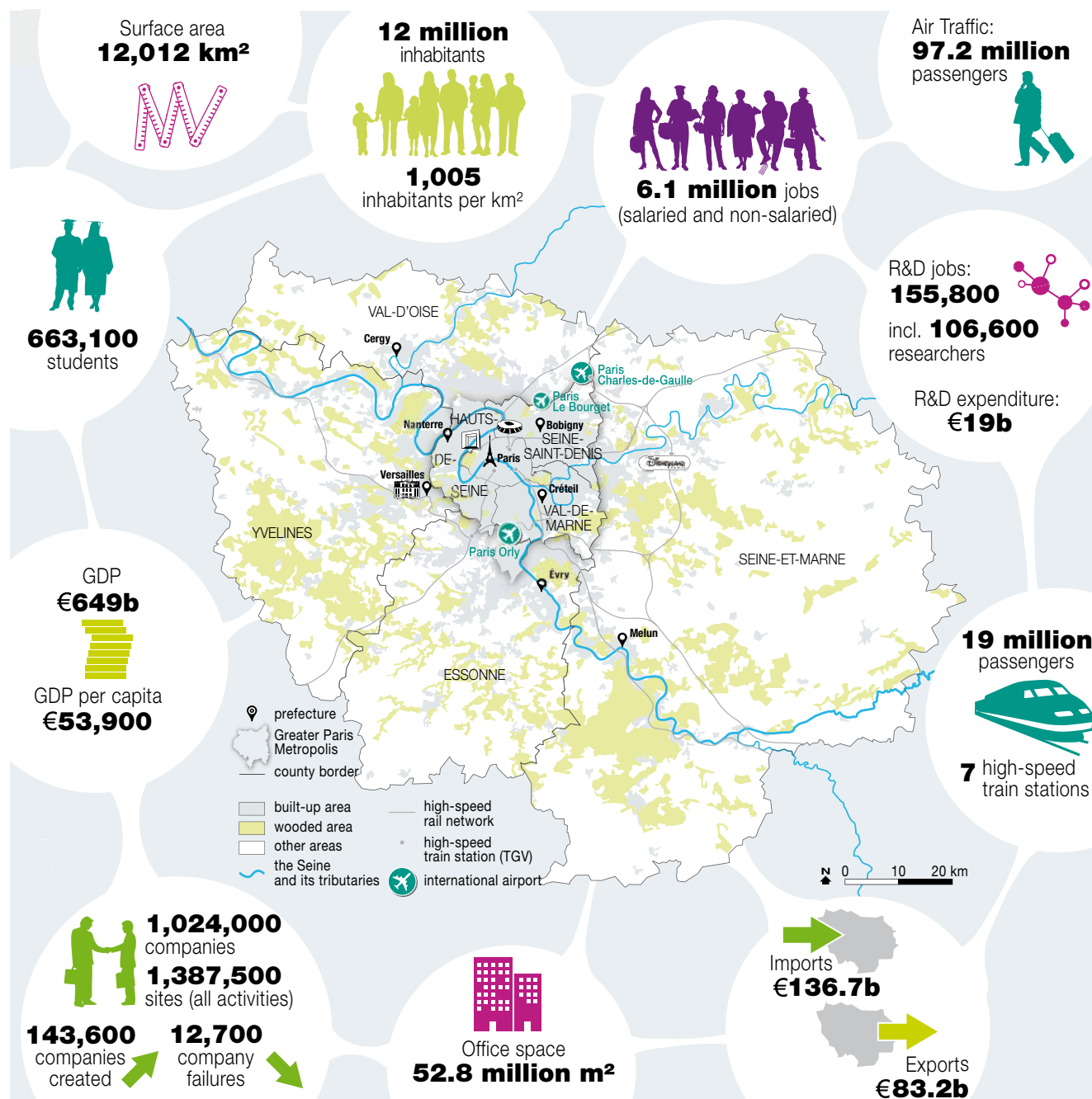
**67,000** foreign students in universities (2014-15)

**13,000** foreign companies (2010)

**340** foreign companies have created or preserved 9,600 jobs in 2015



## PARIS REGION ECONOMIC DATA



© IAU idF / sources: French customs, INSEE (National Institute of Statistics and Economic Studies), Ministry of Education, Higher Education and Research, ORIE (Regional Observatory of Commercial Real Estate in the Paris Region), Paris Aéroport, SNCF (National Railways of France)





Atmospheres in Paris Region © Paris Tourist Office / Sarah Sergent



**12 million  
inhabitants**



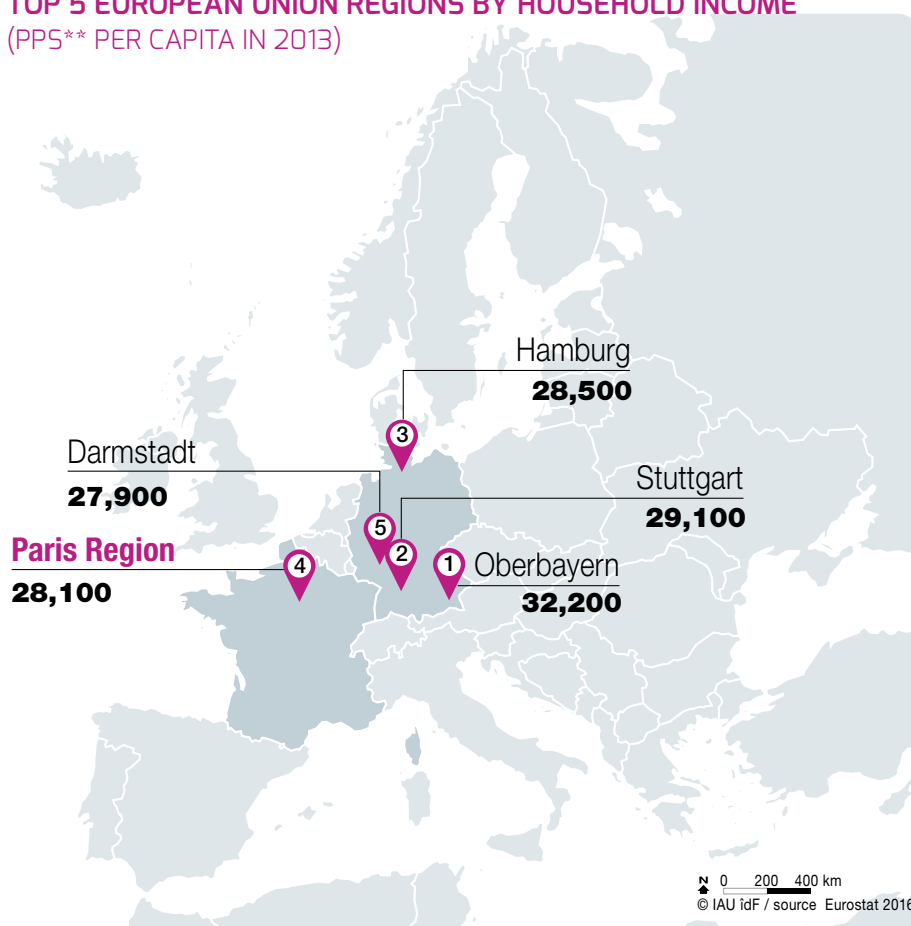
## EUROPE'S MOST POPULATED REGION

**12 million** inhabitants  
**18.2%** of France's population  
**2.4%** of the European Union's population

There are 5 towns in Paris Region with more than **100,000 inhabitants**: Paris, Boulogne-Billancourt, Saint-Denis, Argenteuil and Montreuil  
 (INSEE, Eurostat 12/16, data 2015)

### TOP 5 EUROPEAN UNION REGIONS BY HOUSEHOLD INCOME (PPS\*\* PER CAPITA IN 2013)

THE 4<sup>TH</sup> WEALTHIEST POPULATION IN THE EUROPEAN UNION



\* PPS: Purchasing Power Standard





## A YOUNG, DYNAMIC POPULATION

**179,762 births**

**74,539 deaths**

**Birth rate: 15.2‰**

(**12.4‰** for France)

Men's life expectancy

**80.8 years** (France: 79.2)

Women's life expectancy

**85.9 years** (France: 85.4)

Paris fertility rate:

**2.04** children per woman  
(Brussels: 1.88, London: 1.73,  
Munich: 1.47, Milan: 1.46,  
Berlin: 1.46, Barcelona: 1.39)

(INSEE 9/16, Eurostat 11/16, data 2014)

### 55% OF PARIS REGION'S POPULATION IS UNDER 40

| Age     | Paris Region      |                      | France            |                |
|---------|-------------------|----------------------|-------------------|----------------|
|         | Total             | %/Total Paris Region | Total             | %/Total France |
| 0-19    | 3,133,357         | 25.95%               | 16,359,219        | 24.64%         |
| 20-39   | 3,430,843         | 28.42%               | 15,983,034        | 24.08%         |
| 40-59   | 3,193,560         | 26.45%               | 17,758,118        | 26.75%         |
| 60-74   | 1,507,433         | 12.49%               | 10,217,221        | 15.39%         |
| Over 75 | 808,721           | 6.70%                | 6,063,010         | 9.13%          |
|         | <b>12,073,914</b> | <b>100%</b>          | <b>66,380,602</b> | <b>100%</b>    |

Source: INSEE, 12/16, data 2015

## A MULTICULTURAL POPULATION

**13.1%** of Paris Region's population is foreign, i.e. **1.6 million** people

(INSEE, 1/17, data 2013)

**46.2%** come from Africa (**726,309**)

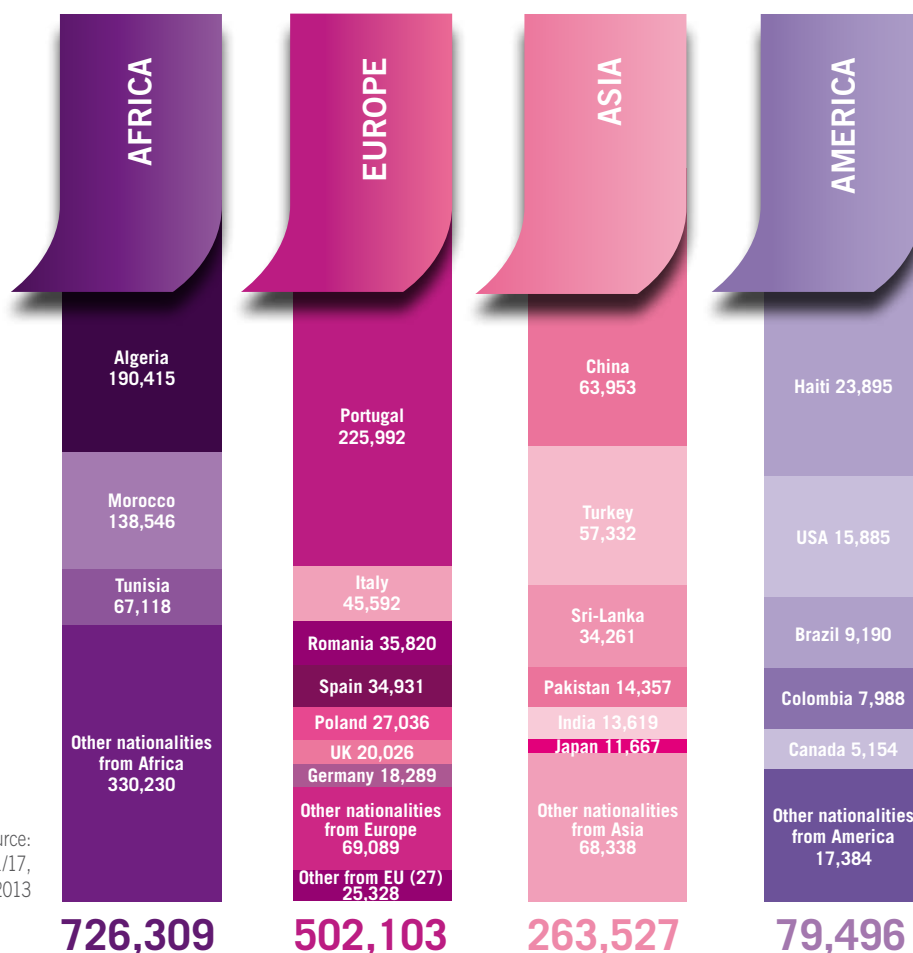
**31.9%** come from Europe (**502,103**)

**16.7%** come from Asia (**263,527**)

**5.1%** come from America (**79,496**)

**0.1%** come from Oceania (**1,913**)

Source:  
INSEE, 1/17,  
data 2013





Graduation Ceremony at HEC © HEC



## Europe's largest pool of students and PhD candidates



**FROM KINDERGARDEN (2-6 YEARS) TO HIGH SCHOOL (15-18 YEARS)**, an extensive selection of international schools and courses open to foreign and French pupils.

**30 international schools**  
**124 international programs**  
 in 16 different languages leading to the "international option" of France's high school graduation exam (OIB)  
**64,000 students** in European programs  
 (MENESR, data 2015)

|            |    |         |    |          |   |           |   |
|------------|----|---------|----|----------|---|-----------|---|
| British    | 33 | Chinese | 11 | Japanese | 5 | Norwegian | 3 |
| German     | 14 | Italian | 7  | Polish   | 5 | Swedish   | 3 |
| American   | 12 | Arab    | 6  | Danish   | 3 | Brazilian | 1 |
| Portuguese | 11 | Spanish | 6  | Dutch    | 3 | Russian   | 1 |

Source: Eduscol 2016



## A HIGHLY-EDUCATED REGION WITH MANY GRADUATES

**38.7%** of the adult population holds at least a bachelor's degree (2013)

**1,319,500** pupils in primary education  
**1,038,100** students in secondary education  
**663,000** students (**26.5%** of France's student population)  
**17** universities  
**70** "Grandes Ecoles", business and engineering schools

### ► In university

► **377,700 students**

- Bachelor's degree: 213,200
- Master's degree: 144,600
- PhD: 19,900

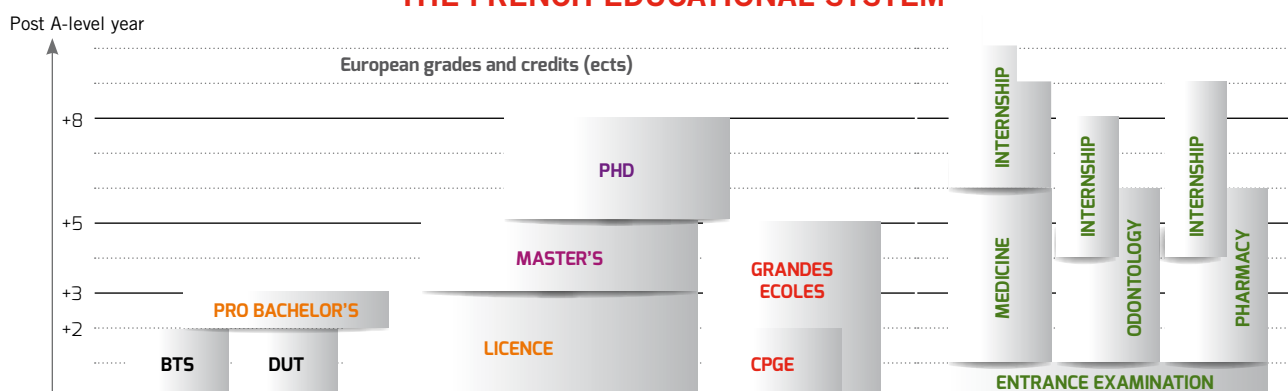
### ► In other higher education institutions

► **288,000 students**

- Advanced technician programs: 45,000
- Business schools: 42,500
- Engineering schools: 36,000
- Preparatory classes for the Grandes Ecoles: 27,300
- Other establishments incl. Grandes Ecoles: 137,700

(Ministry of Education, Higher Education and Research, data 2015-16)

## THE FRENCH EDUCATIONAL SYSTEM



Source: MESR (French Ministry of Higher Education and Research)

BTS: Technical programs - DUT: University Diploma of Technology - Grandes Ecoles: Engineering & Business schools - CPGE: class which prepares students to enter the Grandes Ecoles





## AN ATTRACTIVE REGION FOR FOREIGN TALENTS

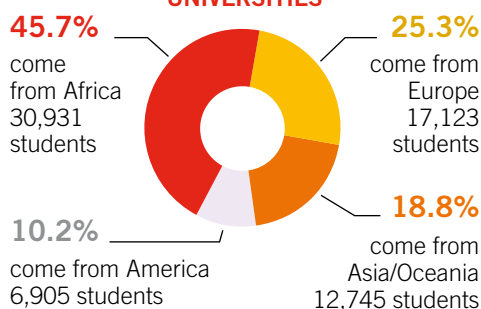
### Paris: top world city for studying (QS Best Student Cities, 2016)

In Paris Region,  
**1** out of **5** university students is foreign (**18%**)

**68,000** foreign students, i.e. **30.1%** of all foreign students in French universities

**9,442** foreign PhD students, i.e. **43.8%** of PhD students in French universities

### FOREIGN STUDENTS IN PARIS REGION UNIVERSITIES



Source: Ministry of Education, Higher Education and Research, 2015-16

## Research and higher education clusters

Stakeholders in higher education and research come together to discuss and to unite their strengths and their differences so as to achieve their shared common goals. There are **11 clusters**: Hesam University, Paris Sciences et Lettres Research University, Sorbonne Paris Cité University, Sorbonne Universities, Paris Est University, Paris Lumières University, Paris Saclay University, Paris Seine University, Campus Condorcet - Paris-Aubervilliers, Cité des humanités et des sciences sociales, Institut Polytechnique Grand Paris, ParisTech.

## Breakdown of the university students in Paris Region in 2015-2016, by field of study

| Fields of study   | Total Higher Education Students | %            |
|---|---------------------------------|--------------|
| Law, Political Science                                  | 58,489                          | 15.48        |
| <b>Total Law, Political Science</b>                     | <b>58,489</b>                   | <b>15.48</b> |
| Economics   | 37,655                          | 9.97         |
| Economic and public administration                      | 7,730                           | 2.05         |
| <b>Total Economics - Administration</b>                 | <b>45,385</b>                   | <b>12.02</b> |
| Letters, Language arts, Art                             | 31,311                          | 8.29         |
| Languages   | 24,581                          | 6.51         |
| Social and Human sciences                               | 70,199                          | 18.58        |
| Literature, Humanities                                  | 2,405                           | 0.64         |
| <b>Total Letters - Art - Languages - Human Sciences</b> | <b>128,496</b>                  | <b>34.02</b> |
| Basic and Applied sciences                              | 39,254                          | 10.39        |
| Natural and Life sciences                               | 14,942                          | 3.96         |
| Interdisciplinary sciences                              | 15,364                          | 4.07         |
| <b>Total Sciences</b>                                   | <b>69,560</b>                   | <b>18.42</b> |
| Sports  | 7,143                           | 1.89         |
| <b>Total Sports</b>                                     | <b>7,143</b>                    | <b>1.89</b>  |
| <b>Subtotal General Fields</b>                          | <b>309,073</b>                  | <b>81.83</b> |
| <b>Health sector</b>                                    | <b>51,721</b>                   | <b>13.69</b> |
| <b>University Institute of Technology Fields</b>        | <b>16,925</b>                   | <b>4.48</b>  |
| <b>Grand Total</b>                                      | <b>377,719</b>                  | <b>100</b>   |

Source: Ministry of Education, Higher Education and Research, data 2015-16

## EDUCATION WITH A WORLDWIDE REPUTATION

### Business schools & management training programs (2016)

#### Financial Times Rankings

- **Global MBA:**
  - INSEAD, world leader ahead of Harvard and London Business Schools. HEC Paris N° 15
- **European Business Schools:**
  - 2 schools in the European Top 3: HEC Paris and INSEAD
- **Masters in Management:**
  - 3 schools in the World Top 5: HEC Paris (2), Essec Business School (3), ESCP Europe (4)
- **Executive MBA:**
  - 4 MBA programs in the World Top 12: Tsinghua University/INSEAD (2), HEC/LSE/ NYU (3), INSEAD (4), ESCP Europe (12)

### Universities (2016)

- **Times Higher Education World University Ranking:**
  - 4 higher education institutions in the Top 200: Ecole Normale Supérieure, Ecole Polytechnique, Pierre and Marie Curie University, Paris-Sud University
- **ARWU World University Ranking:**
  - 5 higher education institutions in the Top 100: Pierre and Marie Curie University, Paris-Sud University, Ecole Normale Supérieure, Ecole Polytechnique, Paris Diderot University

### Specialized schools (2016)

- Gobelins, best animation school worldwide
- Ecole 42, best coding school worldwide



**Mathematics: 2 universities in the top 10 ARWU (2015):** Pierre and Marie Curie University, Paris Sud University

**Physics: 2 universities in the top 30 ARWU (2015):** Paris Sud University, Pierre and Marie Curie University



Futur en Seine 2016 © Dan Taylor - © Fotolia / Zsolt Bota Finna -  
ESIEE Engineering © CCI Paris Ile-de-France / L. Bonvillain / R. Roux - © Fotolia / Capifrutta



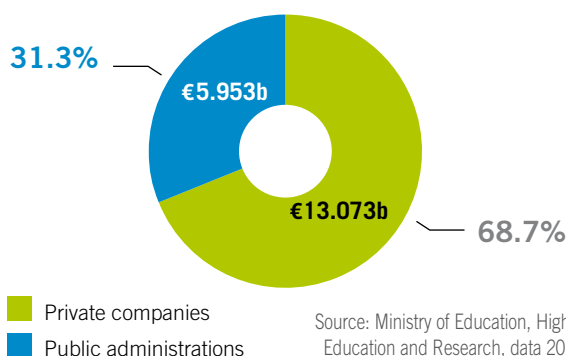
**156,000 people  
involved in research**  
(including 106,600 researchers)



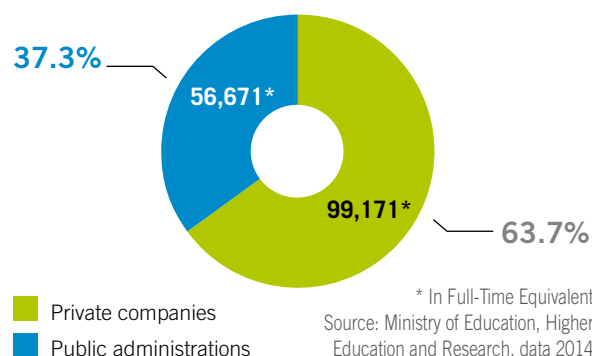
## PARIS REGION LEADING EUROPE IN R&D (2014)



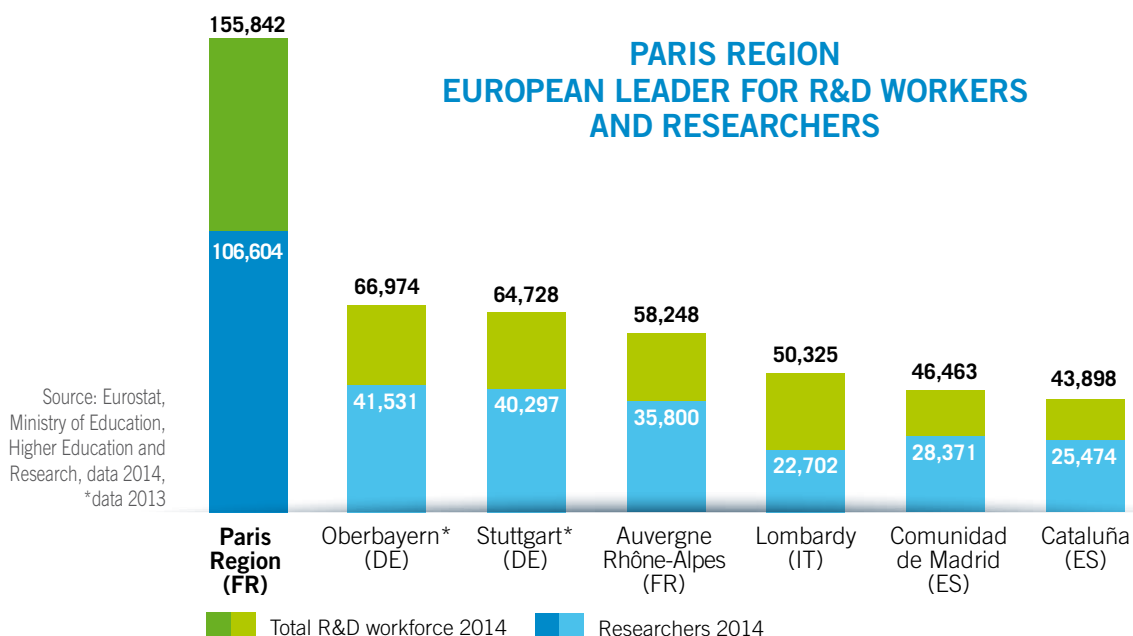
**PARIS REGION  
R&D EXPENDITURE: €19.026b**  
6.6% of European Union - 39.7% of France



**PARIS REGION  
R&D WORKFORCE\*: 155,842**  
5.6% of European Union - 37.3% of France



## PARIS REGION EUROPEAN LEADER FOR R&D WORKERS AND RESEARCHERS







## THE PARIS REGION'S EXCELLENCE IS INTERNATIONALLY RENOWNED

**31** Nobel Prizes

**Ecole Normale Supérieure**, top Nobel-producing undergraduate institution in the world

**11** Fields Medals

**29,400** enrolled in doctoral programs, **38%** in France (MENESR, data 2013)

**5,111** foreign researchers in Paris Region, i.e.

**53.2%** of foreign researchers in France (FNAK, data 2015)

**18,300** scientific publications, **35.4%** in France (OST, 2016, data 2013)

**7,421** patents filed (INPI, data 2015)

**N° 3 worldwide** in volume of scientific publications behind Beijing and Tokyo (Elsevier/scopus)

**European leader** of the world's scientific publications in all disciplines and in mathematics, engineering sciences, universe sciences, physics, chemistry, fundamental biology

**7.1%** of the EU28's and **3.8%** of the world's scientific publications in mathematics (OST, data 2013)

**N° 2 in Europe** of the world's scientific publications in medical research, applied biology-ecology, human sciences, social sciences (OST, data 2013)

**European leader** for European patent applications by the inventor - all fields in 2012: **2,940**

**34%** of European patents are in France (OST, 2015, data 2012)



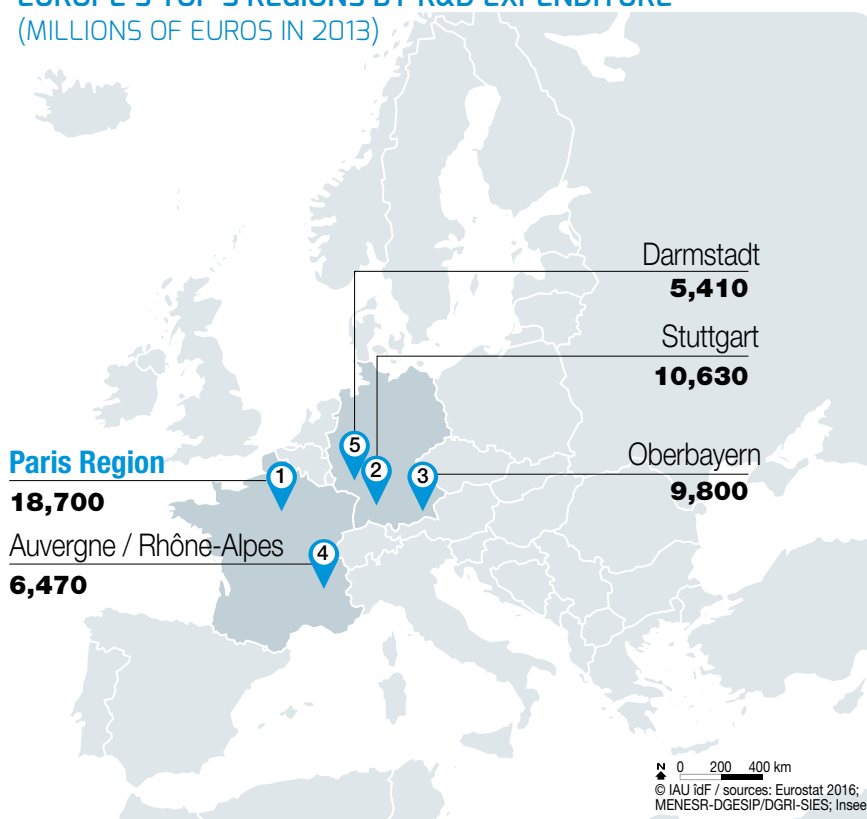
Futur en Seine 2016 © Beto-Ruiz-Alonso

## THE N° 1 EUROPEAN REGION FOR RESEARCH & DEVELOPMENT EXPENDITURE



Genopole Campus Evry (91)  
© PRE - Tendence floue / Denis Bourges

## EUROPE'S TOP 5 REGIONS BY R&D EXPENDITURE (MILLIONS OF EUROS IN 2013)





## PARIS REGION, THE PLACE TO FOSTER INNOVATION

**9 competitiveness clusters** bring together businesses, laboratories, research centers and higher education institutions to focus on applied research and to develop synergies and stimulate the emergence of technology transfers, and collaborative and innovative projects.

**Over 4,000 members** including: **3,400** companies and **420** labs and teaching institutions, ...  
**2,200** projects  
**€7.8b** of total funding



**Perfumery and cosmetics**  
**465 members**, incl. 42 major groups, 406 SME's, 17 labs and teaching institutions  
**200 projects** funded since the cluster was founded  
**Total funding:**  
**280 million euros**



**Design, production and mastery of complex systems**  
**830 members**, incl. 140 major groups, 470 SME's, 140 labs and teaching institutions  
**550 projects** funded since the cluster was founded  
**Total funding:**  
**2,800 million euros**



**Transport and mobility**  
**361 members**, incl. 49 major groups, 226 SME's, 45 labs and teaching institutions  
**216 projects** funded since the cluster was founded  
**Total funding:**  
**1,051 million euros**



**Digital transformation**  
**1,065 members**, incl. 50 major groups, 920 SME's, 80 labs and teaching institutions  
**664 projects** funded since the cluster was founded  
**Total funding:**  
**1,500 million euros**



**Financial services**  
**422 members**, incl. 132 major groups, 267 SME's, 15 labs and teaching institutions  
**13 projects** funded since the cluster was founded  
**Total funding:**  
**16 million euros**



**Aeronautics, space and on-board systems**  
**270 members**, incl. 42 major groups, 158 SME's, 44 labs and teaching institutions  
**66 projects** funded since the cluster was founded  
**Total funding:**  
**293 million euros**



**Sustainable cities and urban ecotechnologies**  
**260 members**, incl. 10 major groups, 184 SME's, 31 labs and teaching institutions  
**172 projects** funded since the cluster was founded  
**Total funding:**  
**460 million euros**



**Rubber and polymer industry**  
**129 members**, incl. 11 major groups, 76 SME's, 25 labs and teaching institutions  
**71 projects** funded since the cluster was founded  
**Total funding:**  
**245 million euros**



**High-tech healthcare and new therapies**  
**251 members**, incl. 21 major groups, 195 SME's, 26 labs and teaching institutions  
**289 projects** funded since the cluster was founded  
**Total funding:**  
**1,190 million euros**

Sources: Advancity, ASTech, Cap Digital, Cosmetic Valley, Elastopole, Finance Innovation, Medicen, Mov'eo, Systematic





Paris La Défense Business District © Fotolia



## Europe's leading economic region

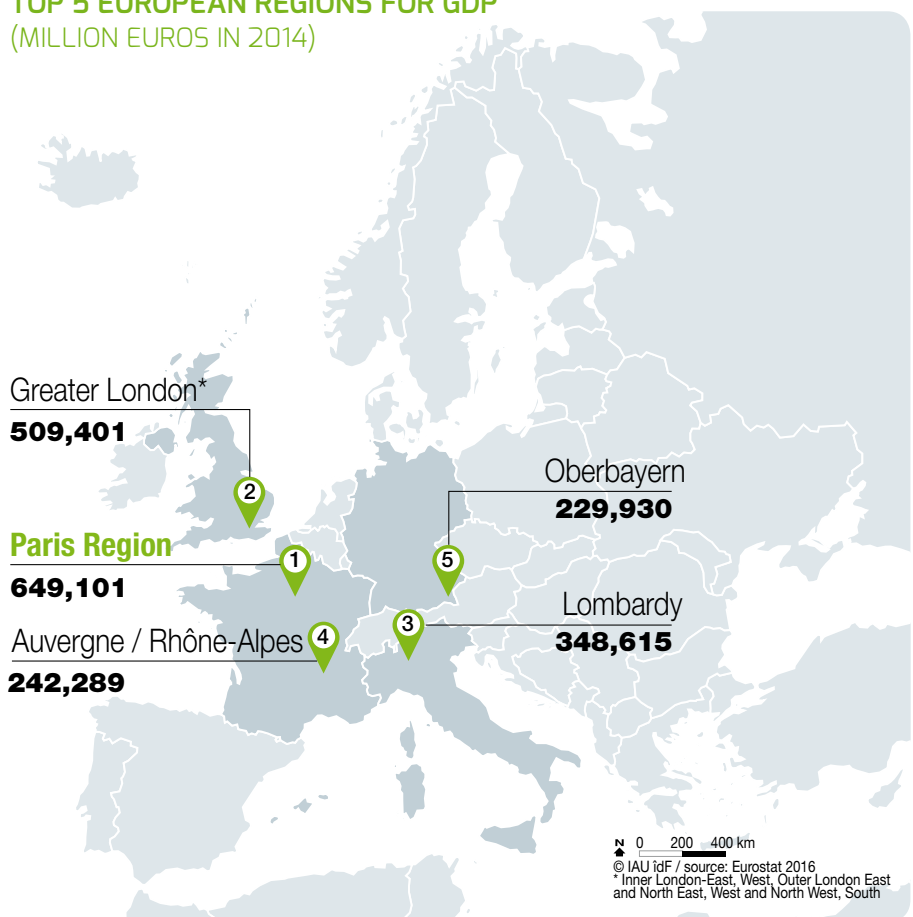


## EUROPE'S TOP GROWTH DOMESTIC PRODUCT

The Paris Region's economic dynamism benefits from its position at the heart of the world economy. The Paris Region's GDP is equivalent to that of the Netherlands, and higher than that of Sweden, Poland, Belgium or Norway.

**GDP: €649 billion**  
**30.3%** of France's GDP  
**4.6%** of EU28 GDP  
**GDP per capita: €53,900**  
**GDP per job: €105,534**  
 (INSEE, Eurostat, 2016, data 2014)

### TOP 5 EUROPEAN REGIONS FOR GDP (MILLION EUROS IN 2014)



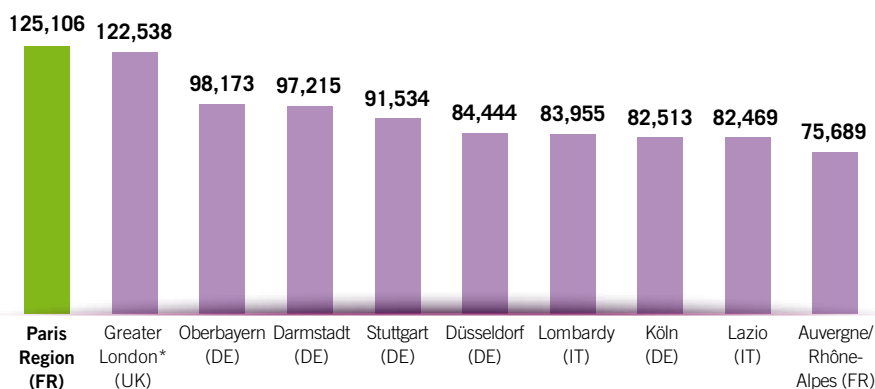
Louis Vuitton Foundation - Frank Gehry © Florence Humbert

## A MAJOR BUSINESS HUB IN EUROPE

**1,023,709** companies  
(INSEE, 1.1.2015, Trading activities)  
**1,387,568** sites  
(INSEE, 31.12.14, Total activities)  
**143,622** business creations  
(INSEE, 2015)

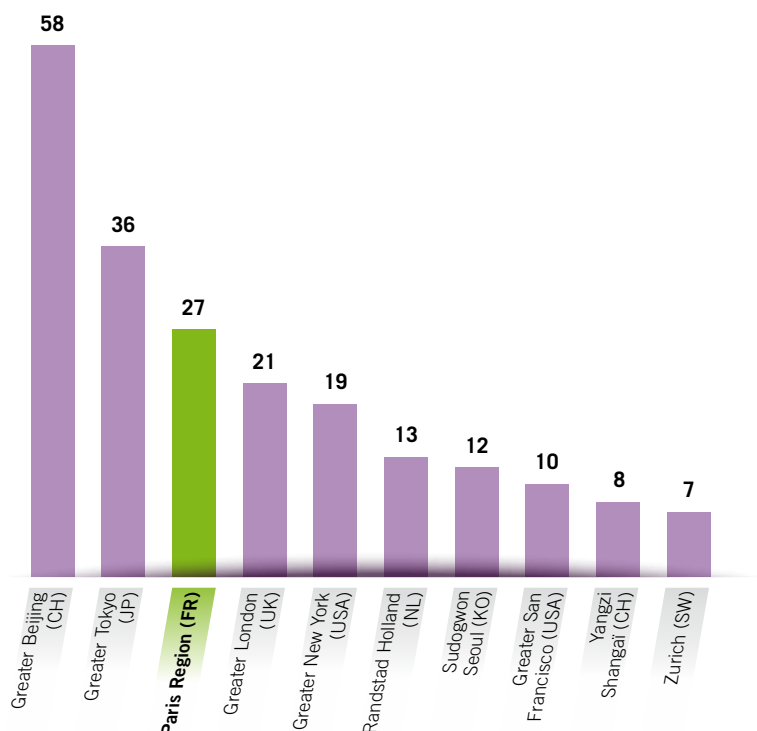
The primary strength of the Paris Region's economy is the concentration of jobs, corporate headquarters, SMEs/SMLs and business start-ups.  
All of France's very large businesses (> 1,500 employees each) have a site in the region.  
Paris Region is also the top French region in terms of hosting foreign groups and it accounts for over a quarter of all new business start-ups in France.

## EUROPE'S LEADING REGION FOR LABOR PRODUCTIVITY



Labor Productivity  
Source: Eurostat GDP in million euros divided by total number employed (2014),  
Paris Region Entreprises estimates.  
\*Greater London= Inner + Outer London

## PARIS REGION N° 1 IN EUROPE AND N° 3 WORLDWIDE FOR HOSTING THE WORLD'S TOP 500 CORPORATE HEADQUARTERS



Source: Fortune Magazine, Global 500, July 2016 - Ranking by metropolitan regions

## TOP 10 CORPORATE HEADQUARTERS IN PARIS REGION - FORTUNE GLOBAL 500

|                       | Revenues<br>in € Millions | Total<br>workforce |
|-----------------------|---------------------------|--------------------|
| Total                 | 134,581                   | 96,019             |
| AXA                   | 121,283                   | 98,279             |
| BNP Paribas           | 104,657                   | 181,551            |
| Société Générale      | 101,095                   | 151,149            |
| Crédit Agricole       | 78,915                    | 71,499             |
| Carrefour             | 82,082                    | 380,920            |
| ENGIE                 | 72,742                    | 154,935            |
| Électricité de France | 78,074                    | 156,312            |
| PSA Peugeot Citroën   | 56,912                    | 187,347            |
| Groupe BPCE           | 52,744                    | 102,886            |

Source: Fortune Magazine, Global 500, July 2016 -  
Exchange rate used: \$1 = €0.938367





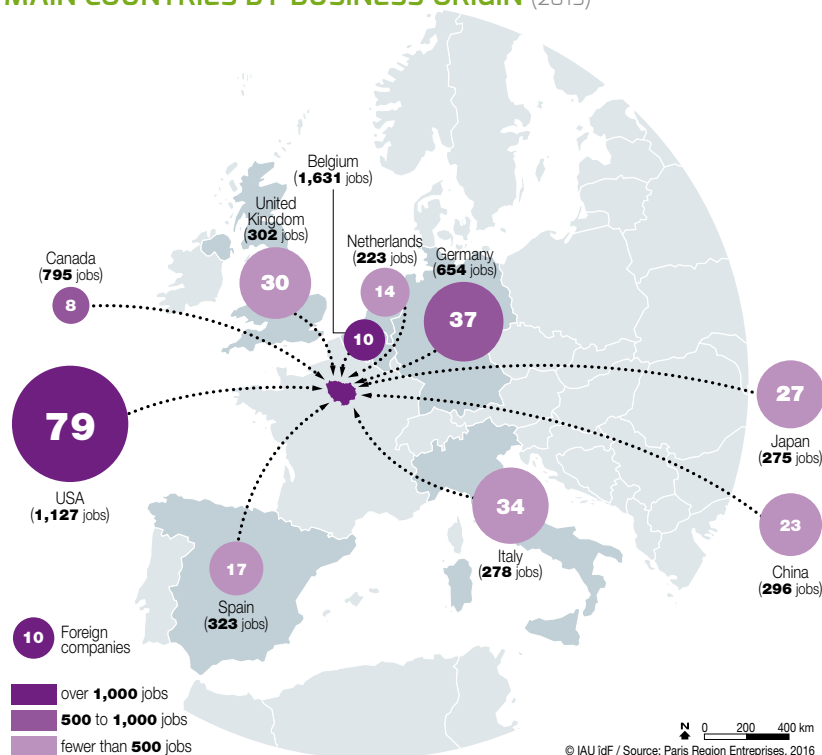
## EUROPE'S N° 2 REGION FOR THE ESTABLISHMENT OF MAJOR FOREIGN GROUPS

**13,000** foreign companies  
**27%** of all foreign companies established in France  
**600,000** jobs

## IN 2015 (Paris Region Entreprises)

- 340** foreign companies coming from **33** countries and creating **9,579** jobs, including:
- **185** coming from Europe (57%), **4,091** jobs
  - **87** coming from America (26%), **1,922** jobs
  - **61** coming from Asia (18%), **648** jobs
  - **7** coming from the Middle East (2%), **521** jobs

## FOREIGN DIRECT INVESTMENTS IN PARIS REGION: MAIN COUNTRIES BY BUSINESS ORIGIN (2015)



## TOP MAJOR PARIS REGION COMPANIES DEPENDENT ON FOREIGN GROUPS

(BASED ON SALARIED WORKFORCE)

| Country     | Company                   | Salaried workforce |
|-------------|---------------------------|--------------------|
| Netherlands | RANDSTAD                  | 63,569             |
| Denmark     | ISS PROPRETE              | 21,181             |
| Belgium     | CORA                      | 18,071             |
| Netherlands | RANDSTAD INHOUSE SERVICE  | 17,570             |
| USA         | EURO DISNEY ASSOCIES      | 14,610             |
| Sweden      | SECURITAS FRANCE          | 13,120             |
| Canada      | CGI FRANCE                | 9,480              |
| Germany     | METRO CASH & CARRY FRANCE | 9,169              |
| Sweden      | MEUBLES IKEA FRANCE       | 9,014              |
| England     | BRICO DEPOT               | 7,543              |
| USA         | CIE IBM France            | 7,270              |
| Sweden      | H&M                       | 6,556              |



BNP Paribas © Vincent Gollain

Source: Diane, 2016



## PARIS REGION AT THE CENTER OF GOODS AND SERVICES TRADE FLOWS (2015)

Paris Region is at the center of world trade flows: its main trading partners are **Europe** (exports: 57.2%, imports: 59.8%), **America** (exports: 16.5%, imports: 10.3%) and **Asia** (exports: 13.3%, imports: 23.9%).

### Imports: €136.7b

26.9% of France's imports

#### Main regional imports

Automotive manufacturing products

12%, €16.7b

Natural hydrocarbons

8%, €11.2b

Telephones and communication

equipment 6%, €8.1b

### Exports: €83.2b

18.7% of France's exports

#### Main regional exports

Space and aeronautics manufacturing products 12%, €9.8b

Automotive manufacturing products

10%, €8.7b

Pharmaceutical products 7%, €6.1b

(French Customs, 2015)



Flins Assembly line - Installation of an Airbus reactor © CCI Versailles-Yvelines

## PARIS REGION'S LEADING BUSINESS PARTNERS (2015)

| Main suppliers            |                   |       | Main customers            |                   |       |
|---------------------------|-------------------|-------|---------------------------|-------------------|-------|
| Imports                   |                   |       | Exports                   |                   |       |
| Country                   | Value (€ billion) | %     | Country                   | Value (€ billion) | %     |
| China                     | 19.2              | 14.05 | Germany                   | 8.6               | 10.34 |
| Germany                   | 16.3              | 11.92 | United States             | 9.8               | 11.78 |
| Belgium                   | 13.6              | 9.95  | Italy                     | 5.4               | 6.49  |
| United States             | 11.5              | 8.41  | United Kingdom            | 5.8               | 6.97  |
| Italy                     | 8.6               | 6.29  | Spain                     | 5                 | 6.01  |
| Spain                     | 8.4               | 6.14  | Belgium                   | 5.3               | 6.37  |
| United Kingdom            | 6.2               | 4.54  | Switzerland               | 4.6               | 5.53  |
| Netherlands               | 5.3               | 3.88  | China                     | 2.9               | 3.49  |
| Switzerland               | 5.1               | 3.73  | Netherlands               | 2.3               | 2.76  |
| Japan                     | 3.2               | 2.34  | Hong Kong                 | 1.8               | 2.16  |
| <b>Total Paris Region</b> | <b>136.7</b>      |       | <b>Total Paris Region</b> | <b>83.2</b>       |       |

Source: French Customs, 2015



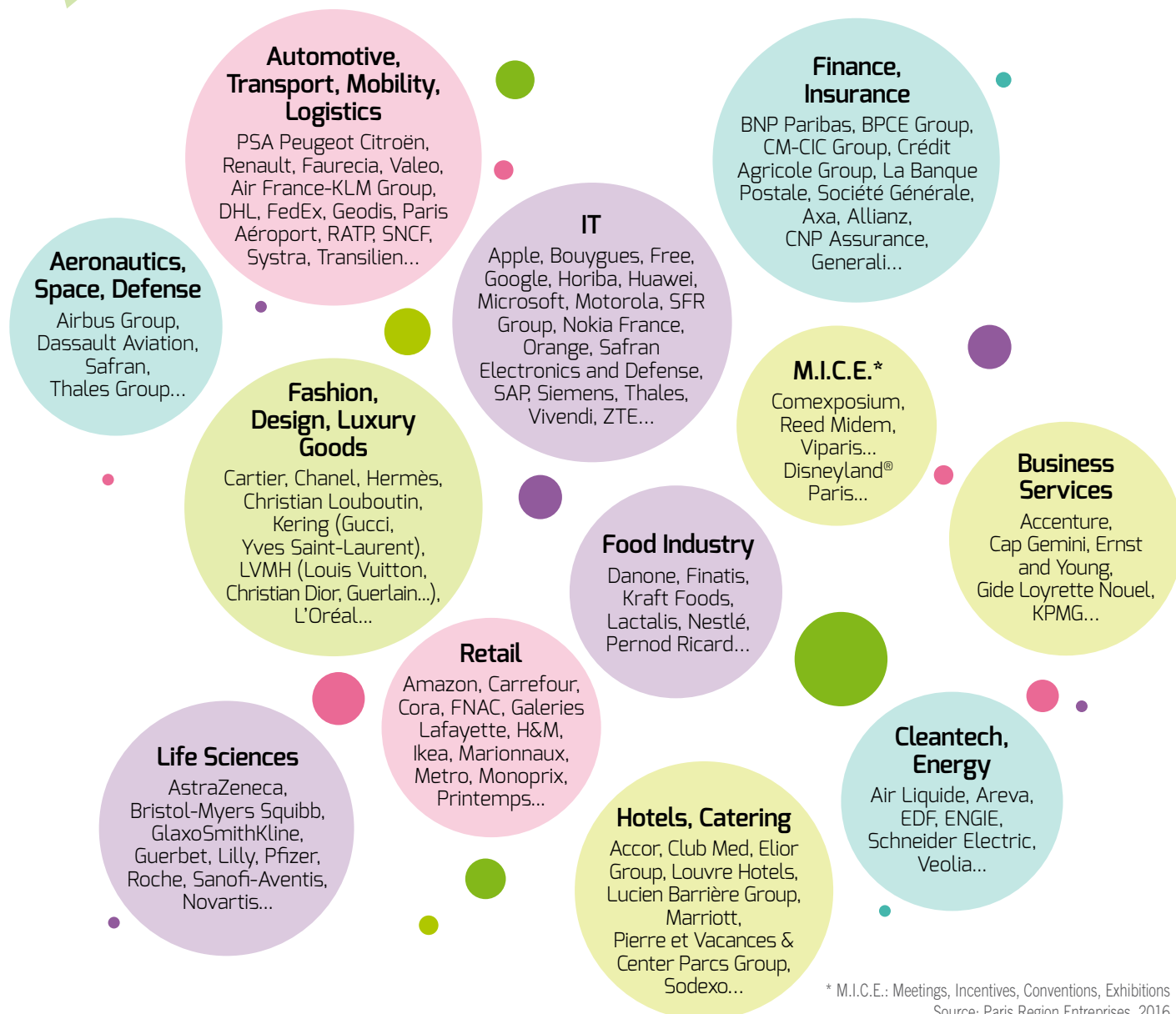


## A multi-specialized region

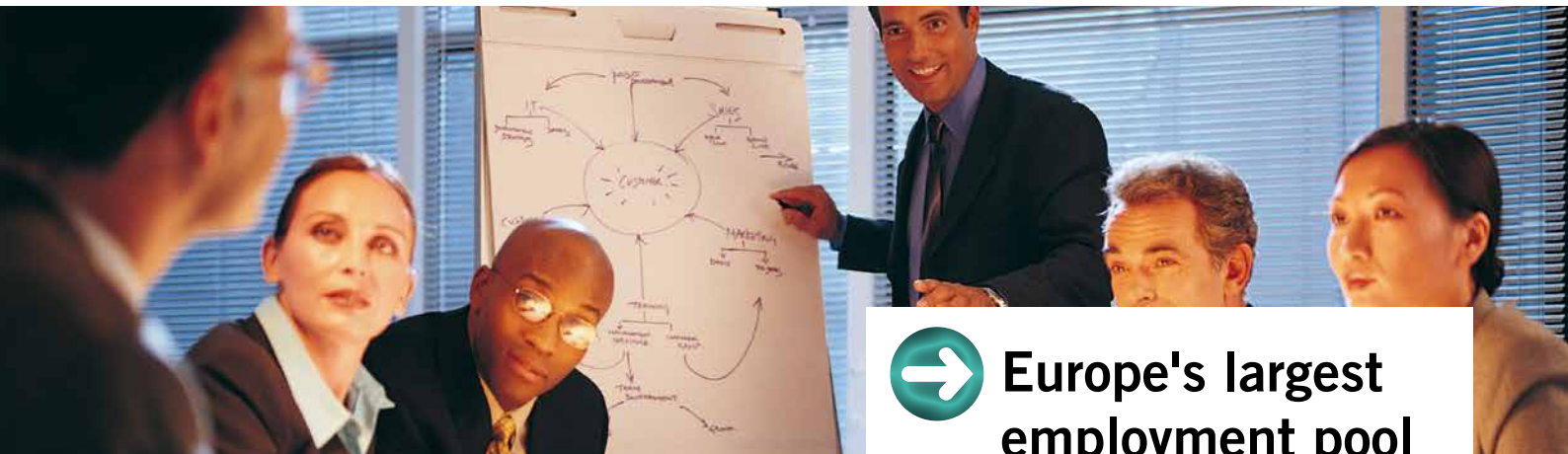
© CRT / N. Baetens - © Fotolia / Buchachon - © AF / Virginie Valdois - © JNT Visual / Fotolia



## KEY SECTORS IN PARIS REGION



\* M.I.C.E.: Meetings, Incentives, Conventions, Exhibitions  
Source: Paris Region Entreprises, 2016



**Europe's largest  
employment pool**

© Digitalvision



## THE EUROPEAN EPICENTER OF HUMAN CAPITAL

**6.2 million** jobs, **23.1%** of all jobs in France, **35%** of French executives (INSEE, 2016)

Unemployment rate: **9.6%** (EUROSTAT 2015)

Average gross annual salary: **€44,367** (INSEE, 11/16, data 2012)

### THE PARIS REGION'S POPULATION BY PROFESSIONAL CATEGORY

|  |                  |             |
|--|------------------|-------------|
| Managerial and professional occupations        | 1,639,433        | 27.0%       |
| Administrative white collar workers            | 1,626,762        | 26.8%       |
| Semi-professional workers                      | 1,563,475        | 25.7%       |
| Manual labor and factory workers               | 868,489          | 14.3%       |
| Craftspeople, retailers, business directors    | 281,211          | 4.6%        |
| Farmers  | 5,484            | 0.1%        |
| Others   | 87,576           | 1.4%        |
| <b>Total active population 15-64 years old</b> | <b>6,072,430</b> | <b>100%</b> |

Source: Insee 9/16, data 2013 - Total population 15-64 years



Engine maintenance © Air France Industries /  
Patrick Delapierre



## CHARACTERISTICS OF THE WORKING POPULATION IN PARIS REGION

Age 25-39  
**39 %**



Women  
**49 %**



University  
graduates  
**39 %**



Executives  
**27 %**



Foreign  
population  
**13 %**



© IAU idF 2017 / source: Insee, data 2013



## BREAKDOWN BY SECTOR OF BUSINESS SITES AND JOBS IN PARIS REGION IN 2014

| Business sector   | Sites            | Jobs             |
|---|------------------|------------------|
| Trade of automotive vehicles and motorcycles  | 203,898          | 699,872          |
| Public administration   | 6,792            | 508,670          |
| Administrative services and support activities  | 113,879          | 411,079          |
| Education   | 51,710           | 403,931          |
| Legal, accounting, management, architecture, engineering, technical testing and analysis    | 212,700          | 374,546          |
| Transportation and storage  | 49,135           | 363,569          |
| Financial and insurance activities  | 54,732           | 327,673          |
| Accommodation and food  | 57,107           | 288,049          |
| Construction  | 119,288          | 278,982          |
| Activities for human health   | 80,888           | 276,364          |
| Supporting housing and social work  | 11,877           | 218,070          |
| Computer and information services   | 49,277           | 197,832          |
| Other service activities  | 62,644           | 127,206          |
| Publishing, audiovisual and broadcasting  | 30,575           | 125,859          |
| Arts, entertainment and recreation  | 84,602           | 101,370          |
| Other professional, scientific and technical  | 54,419           | 85,365           |
| Real estate activities  | 84,283           | 76,145           |
| Manufacturing of transport equipment  | 469              | 74,463           |
| Scientific research and development   | 3,203            | 60,737           |
| Manufacturing of food products, beverages and tobacco products                              | 7,461            | 50,130           |
| Electricity, gas, steam and air conditioning supply   | 3,354            | 46,331           |
| Telecommunications  | 2,568            | 43,957           |
| Manufacturing of computer, electronic and optical products                                  | 1,006            | 43,941           |
| Other manufacturing; repair and installation of machinery and equipment                     | 10,641           | 42,714           |
| Production and distribution of water; sewerage, waste management and remediation activities | 2,267            | 39,031           |
| Metallurgy and metal products manufacturing, except machinery and equipment                 | 2,537            | 27,567           |
| Chemical industry   | 782              | 25,172           |
| Manufacturing of rubber and plastic products and other non-metallic mineral products        | 1,662            | 18,524           |
| Pharmaceutical industry   | 202              | 18,298           |
| Manufacturing of textiles; clothing industry, leather and footwear industries               | 6,657            | 18,056           |
| Woodworking, paper and printing industries  | 7,309            | 17,188           |
| Manufacturing of machinery and equipment  | 960              | 16,768           |
| Manufacturing of electrical equipment   | 650              | 13,706           |
| Agriculture, forestry and fishing   | 7,442            | 5,106            |
| Extra-territorial organizations   | 268              | 3,918            |
| Mining and quarrying  | 298              | 1,751            |
| Coking and refining   | 26               | 1,642            |
| <b>Total</b>  | <b>1,387,568</b> | <b>5,433,582</b> |

Number of active establishments and salaried positions as of 31/12/2014 by business sector (A38)  
©Insee 12/16 - Sources : Connaissance Locale de l'Appareil Productif (CLAP)





Paris North station © Paris Tourist Office / Jacques Lebar -  
Signage Shuttle © Air France / Guillaume Grandin - Tramway ligne T3 © RATP / Eric Touzé



## Oustanding transport connections



### PARIS REGION, GATEWAY TO EUROPE AND THE WORLD

Reach 510 million consumers within 2 hours by plane

Paris Region has major infrastructures to ensure the seamless flow of people, goods, capital and data.

#### By plane (Paris Aéroport, 2016)

##### 3 international airports

**97.2 million** passengers &

**709,403** flights

##### Paris-Charles de Gaulle

**N° 2** in Europe for passenger traffic

**65.9 million** passengers

**472,950** flights

##### Paris-Orly

**31.3 million** passengers

**234,453** flights

##### Paris-Le Bourget

Europe's leading business airport

**53,500** flights

**10 airfields and 1 heliport**

#### By train (SNCF, 2015 and STIF)

**10** main stations, including **7** TGV  
(high-speed train) stations

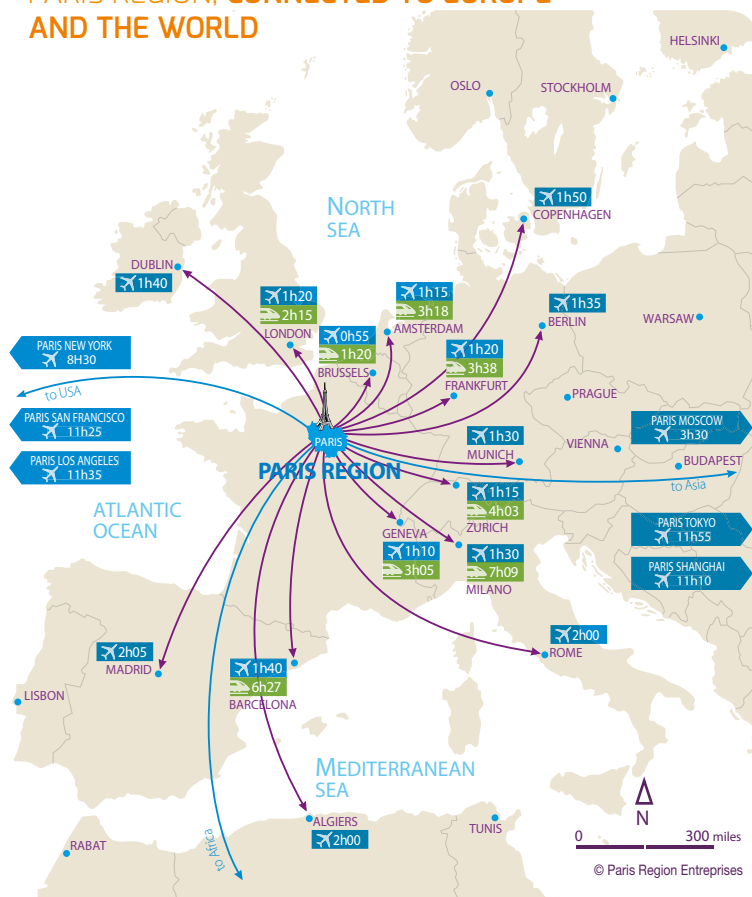
**1 million** passengers on **3,550** trains  
per day on the Paris Region railway  
network

**5** railway stations have traffic that  
exceeds **100,000** travellers daily

**19 million** TGV passengers travelling  
from Paris to main European destinations

**1,800 km** of railway tracks

#### PARIS REGION, CONNECTED TO EUROPE AND THE WORLD





## ONE OF THE BEST AND LARGEST PUBLIC TRANSPORT SYSTEMS IN THE WORLD

### Shared transport

**Velib** (JC Decaux/Velib 9/16, data 2015)

The world's largest self-service bike system

**23,600** bikes

**1,751** stations within Paris and **30** municipalities bordering the capital

**300,000** current subscribers

**298 million** Velib rentals since 2007

**108,000** uses per day on average

**75** Velib rented every minute

**3,500 km** of bike lanes

**Autolib** (2016)

**3,700** car-sharing vehicles in service

**1,042** Autolib stations

**171,000** subscribers

**5.2 million** rentals in 2015, ie.

**100,000** Autolib rentals per week

**100** municipalities

### Public transport (SNCF TRANSILIEEN 2016)

**70%** of passengers on 10% of the national rail network

**1,280 km** of network

**6,200** trains per day

At rush hour, more than **650** trains simultaneously

**3.7** million passengers per working day

**14** lines

**385** regional stations (« Transiliennes »)

### 4.5 BILLION TRIPS BY PUBLIC TRANSPORT IN PARIS REGION IN 2015

| Mode of traffic             | Lines        | Millions of trips |
|-----------------------------|--------------|-------------------|
| Underground / Subway        | 14           | 1,520             |
| Train - RER* (SNCF - RATP)  | 13           | 1,393             |
| Tramways                    | 8            | 0,267             |
| Bus (including night buses) | 1,445        | 1,367             |
| <b>Total</b>                | <b>1,480</b> | <b>4,547</b>      |

Source: Stif according to SNCF, RATP, Optile - \* High-speed metro

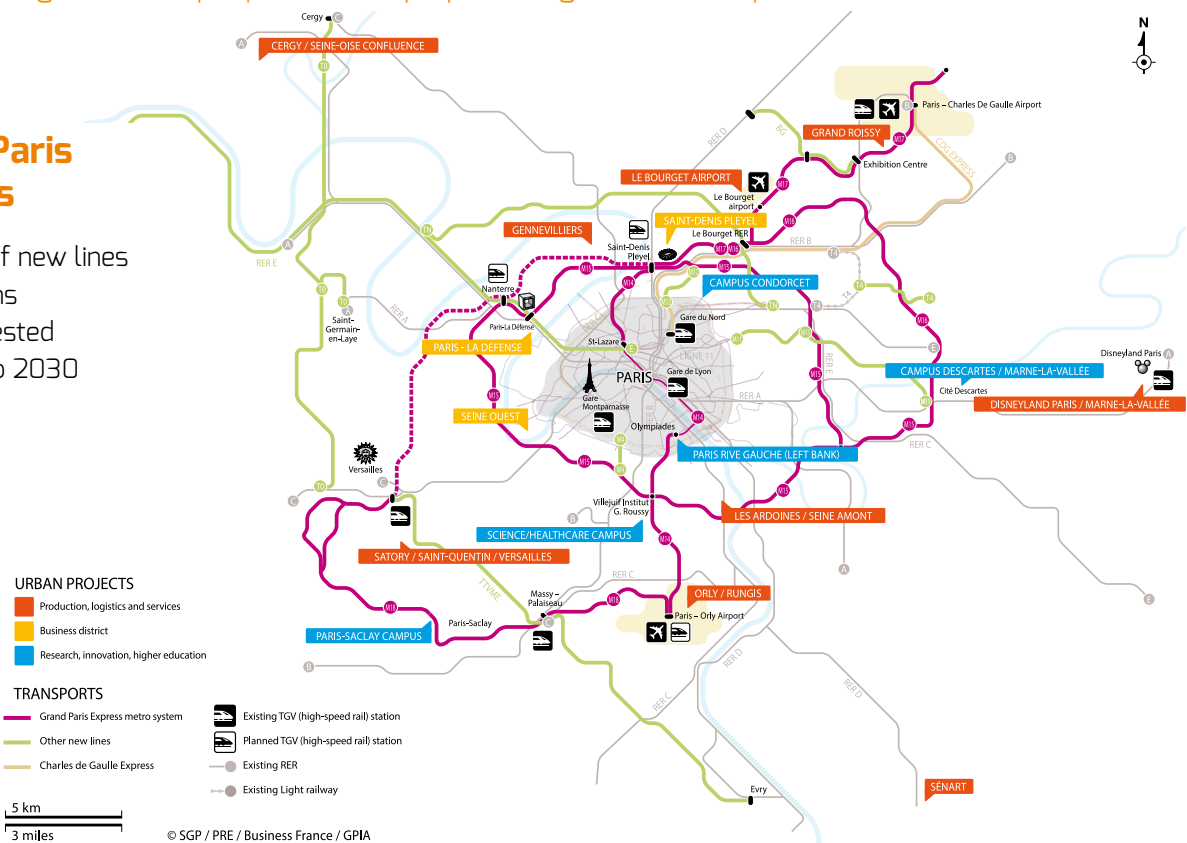
## STILL LOOKING AHEAD WITH THE GRAND PARIS PROJECT, the largest urban project in Europe providing a new transport network

### Grand Paris Express

**200 km** of new lines

**68** stations

**€28b** invested through to 2030





Gennevilliers platform © Port Autonome de Paris - Barge © Fotolia / Coco - Containers and transport trucks © Fotolia / Soleg



## Exceptional logistics infrastructure



### SIGNIFICANT CAPACITY IN LOGISTICS REAL ESTATE

**Warehouses** > 5,000 m<sup>2</sup>

**Surface area** 19 million m<sup>2</sup> (ORIE 2016)

**Take up** 400,000 m<sup>2</sup> (H1 2016)

**Available now** 1 million m<sup>2</sup> (ORIE 2016)

Sources: BNP Paribas Real Estate, ORIE



### A HIGHLY COMPETITIVE LOGISTICS HUB

**Net prime rents in Q2 2016 per year**  
**Warehouses** over 5,000 m<sup>2</sup> (in €)

|  |            |
|--|------------|
| <b>London</b> (United Kingdom)             | <b>219</b> |
| <b>Helsinki</b> (Finland)                  | <b>109</b> |
| <b>Stockholm</b> (Sweden)                  | <b>94</b>  |
| <b>Birmingham</b> (United Kingdom)         | <b>89</b>  |
| <b>Munich</b> (Germany)                    | <b>81</b>  |
| <b>Frankfurt</b> (Germany)                 | <b>76</b>  |
| <b>Hamburg</b> (Germany)                   | <b>68</b>  |
| <b>Madrid</b> (Spain)                      | <b>66</b>  |
| <b>Amsterdam - Rotterdam</b> (Netherlands) | <b>60</b>  |
| <b>Koln</b> (Germany)                      | <b>60</b>  |
| <b>Warsaw</b> (Poland)                     | <b>60</b>  |
| <b>Berlin</b> (Germany)                    | <b>59</b>  |
| <b>Paris Region</b> (France)               | <b>55</b>  |

Source: European Logistics Market, Property Report, H12016 (data Q2 2016) - Panel of regions - BNP Paribas Real Estate

### Road, waterway and railway logistics

**N° 1** road network in Europe

**12,000 km** of roads, including **497 km** of national roads and **613 km** of highways

**French N° 1** river port and the **N° 2** across Europe

**70** urban ports

**500 km** of navigable waterways

**1,000 ha** of port areas

**1 million m<sup>2</sup>** of warehouse space

**6** multimodal platforms

**6** container terminals

Railway freight relies on **111** freight stations and **640** facilities connected to them

(Setra 2014, Haropa, 2016)

### Freight

**Air:** **2.2** million metric tons of goods

(Paris Aéroport 2015)

**Rail:** **10 million** metric tons of goods (IAU)

**Waterway:** **20 million** metric tons of goods

(Haropa, 2016)

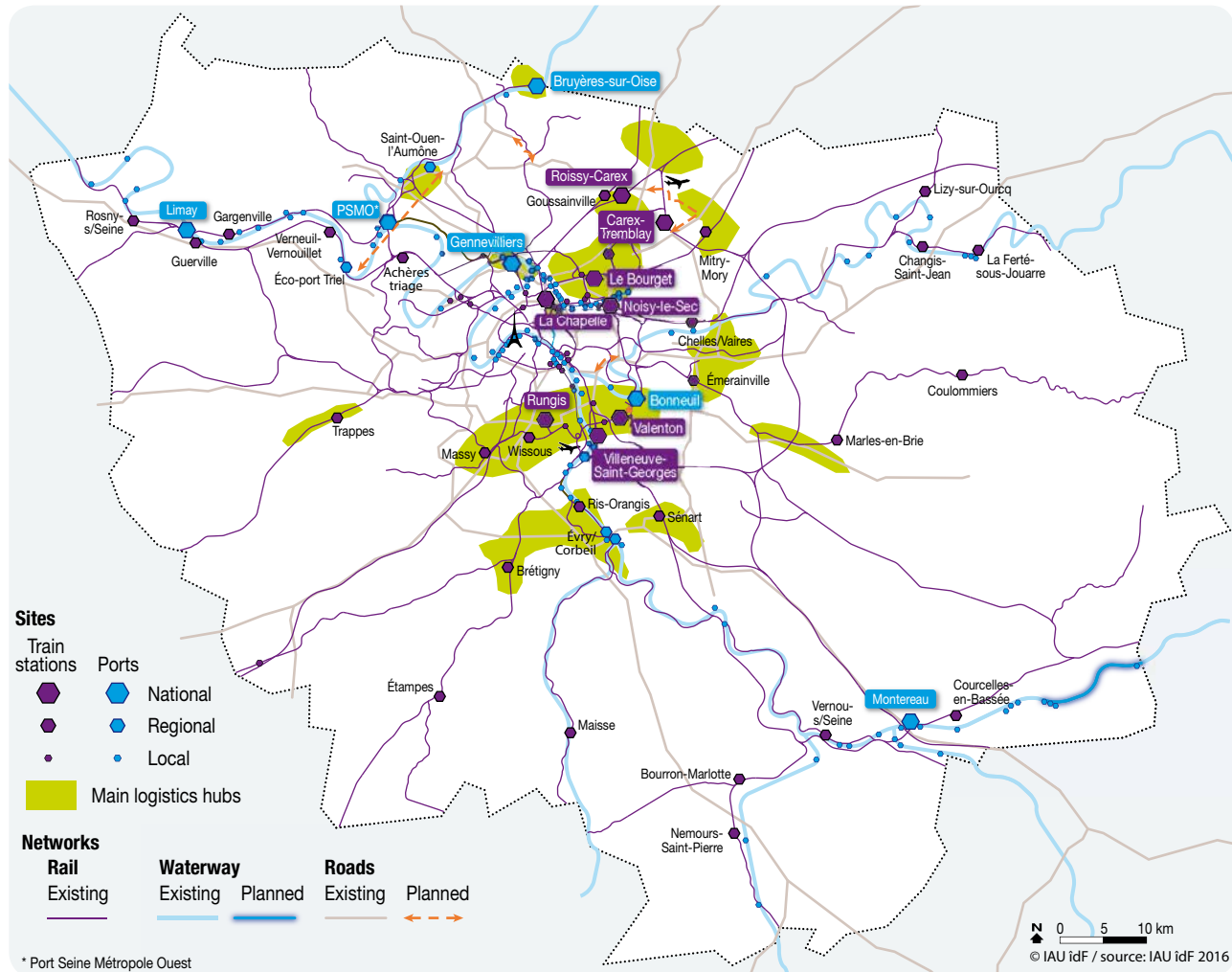
**Road:** **193 million** metric tons of goods

(SOes, TRM survey, 2014)





## INFRASTRUCTURE AND LOGISTICS SITES IN PARIS REGION



### THE 6 MULTIMODAL PLATFORMS MANAGED BY HAROPA-PORTS DE PARIS PROVIDE EXTENSIVE CONNECTIONS TO TRANSPORT INFRASTRUCTURES

| Multimodal platform   | Waterway & Maritime | Railway | Road | Public transport | Oil Pipeline | Traffic (million metric tons) |
|-----------------------|---------------------|---------|------|------------------|--------------|-------------------------------|
| Gennevilliers         | x                   | x       | x    | x                | x            | 3.67                          |
| Limay-Porcheville     | x                   | x       | x    | x                |              | 1.17                          |
| Bonneuil-sur-Marne    | x                   | x       | x    | x                |              | 1.04                          |
| Montereau-Fault-Yonne | x                   | x       | x    |                  |              | 0.49                          |
| Evry                  | x                   | x       | x    |                  |              | 0.36                          |
| Bruyère-sur-Oise      | x                   | x       | x    |                  |              | 0.30                          |

Sources: Haropa - Port de Paris, 2016, data 2015



Offices in Pantin. Ourcq waterway. © Benh LIEU SONG



## Europe's largest inventory of business real estate



### OFFICE SPACE (ORIE and BNP PARIBAS REAL ESTATE, 2016)

|                          |  |
|--------------------------|--|
| Surface area             | <b>52.8 million m<sup>2</sup></b> (ORIE) |
| Take up                  | <b>2.4 million m<sup>2</sup></b>         |
| Available now            | <b>3.5 million m<sup>2</sup></b>         |
| Vacancy rate             | <b>6.7%</b>                              |
| Space under construction | <b>1.1 million m<sup>2</sup></b>         |



### BUSINESS PREMISES (CBRE Q4 2016)

|               |                                  |
|---------------|----------------------------------|
| Surface area  | <b>30 million m<sup>2</sup></b>  |
| Take up       | <b>900,000 m<sup>2</sup></b>     |
| Available now | <b>2.6 million m<sup>2</sup></b> |



### HOUSING (INSEE, data 2013)

|  |
|--|
| <b>5.6 million</b> housing units             |
| • <b>71.6%</b> flats ( <b>3.9 million</b> )  |
| • <b>26.7%</b> houses ( <b>1.5 million</b> ) |

#### PRIVATE HOUSING RENTS IN PARIS REGION

|                            | Paris | Inner suburbs | Outer suburbs | Paris Region |
|----------------------------|-------|---------------|---------------|--------------|
| Rent in €/m <sup>2</sup>   | 22.7  | 16.2          | 13.65         | 17.4         |
| Average monthly rent in €€ | 1,128 | 840,7         | 800,5         | 933          |

Source : OLAP, 2016

#### TOP 10 OFFICE SPACE MARKETS BY OCCUPANCY COSTS (2014)

| Rank 2014 | Country        | City           | District                  | Occupation costs (a/m <sup>2</sup> /year) |
|-----------|----------------|----------------|---------------------------|---|
| 1         | United Kingdom | London         | West End                  | 2,344                                     |
| 2         | China          | Hong Kong      | Central Business District | 1,636                                     |
| 3         | USA            | New York       | Midtown                   | 1,162                                     |
| 4         | Brazil         | Rio de Janeiro | Zona Sul                  | 1,150                                     |
| 5         | India          | New Delhi      | Connaught Place           | 1,064                                     |
| 6         | Russia         | Moscow         | Central Business District | 1,055                                     |
| 7         | Japan          | Tokyo          | Central Business District | 1,051                                     |
| 8         | China          | Beijing        | Central Business District | 926                                       |
| 9         | Australia      | Sydney         | Central Business District | 878                                       |
| 10        | France         | Paris          | Central Business District | 860                                       |

Source: Office Space Across the World 2015, Cushman and Wakefield



## A MULTITUDE OF WORK SPACES

Around **1,500** business activity areas  
**172** «third places»:

- **115** coworking spaces
- **14** makerspace
- **47** shared offices
- **12** hackerspace
- **44** fablabs
- **8** telecenters

(IAU Ile-de-France, 10/16, TechOnMap, La Fonderie, 1/17)



Station F © Wilmotte & Associes

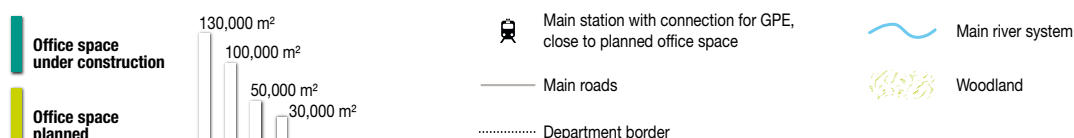
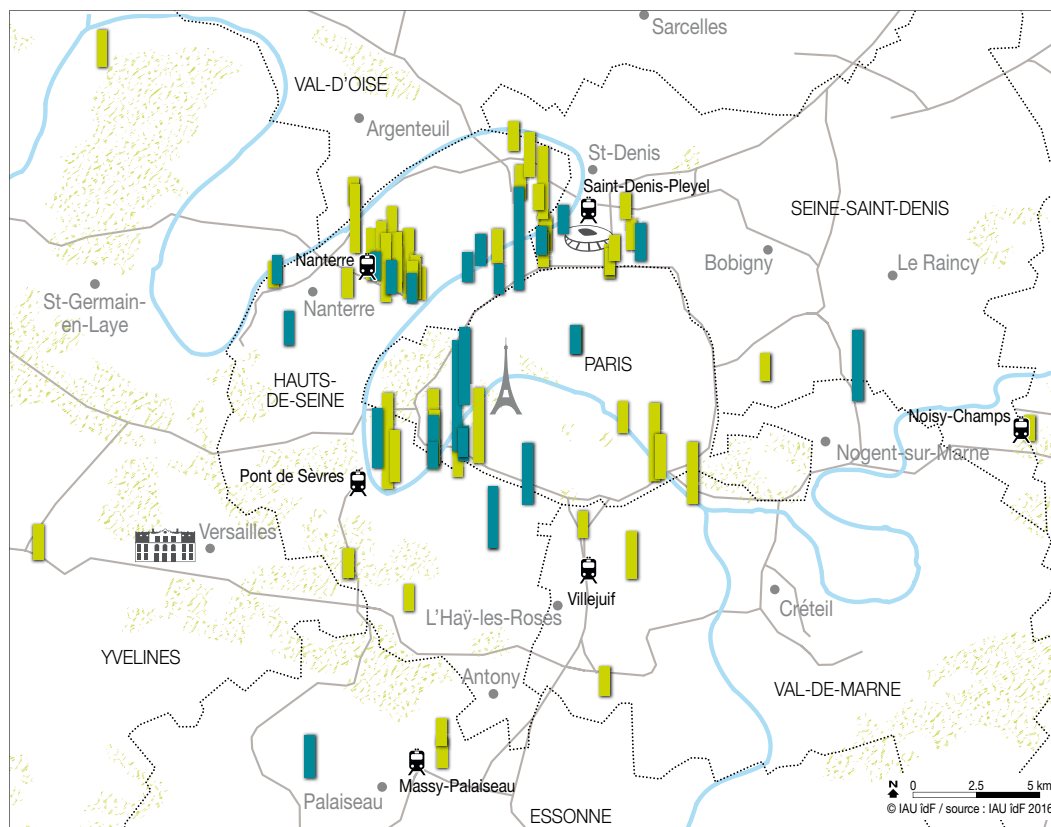
## PARIS REGION, THE WORLD CAPITAL OF BUSINESS INCUBATORS

**110** incubators and accelerators, with **25** under expansion or in development (APUR, 2016)

Over **130,000** square meters of space for start-up incubators has been created in recent years.

By 2020, an additional **100,000 m<sup>2</sup>** will be made available, including **34,000 m<sup>2</sup>** at Station F, opening in 2017, the largest incubator in the world hosting **1,000** start-ups, with some **3,000** desks.

## MAIN OFFICE SPACE PROJECTS BY 2020 IN PARIS REGION WITH SURFACE AREAS OF OVER 30,000 M<sup>2</sup>







© Viparis / J.C. Guilloux



**Europe's top  
region for  
hosting events**



## AN OUTSTANDING WORLD-CLASS DESTINATION FOR ORGANIZING TRADESHOWS (CCI PARIS ÎLE-DE-FRANCE, data 2015)

Exhibition surface area: **700,000 m<sup>2</sup>**

The largest amount of exhibition space in Europe

**21** exhibition and conference venues

**399** trade shows, including **213** professional trade shows

**96,600** exhibiting companies, including **25,900** foreign companies (**27%**)

**8.3** million visitors, including **603,600** foreigners (**7.3%**)

**€4.1b** in economic benefits

**63,100** jobs generated by trade shows

**€19.3b** turnover by exhibiting companies at trade shows, of which **€8.1b** realized with foreign customers

**6.4** million contracts concluded at trade fairs

### TOP 10 INTERNATIONAL TRADESHOWS HELD IN PARIS REGION (BY NUMBERS OF VISITORS AND EXHIBITING COMPANIES)

| Tradeshow Name  | Business sector   | Visitors<br>(1st visit) | Exhibiting<br>companies | Year |
|---|---|-------------------------|-------------------------|------|
| Mondial de l'Automobile / Paris Motor Show  | Transport, logistics, traffic and related equipment                                       | 1,253,513               | 240                     | 2014 |
| Salon International de l'Agriculture /<br>Paris International Agricultural Show                       | Agriculture, horticulture, livestock farming,<br>floristry, fishing and related equipment | 541,077                 | 973                     | 2016 |
| Foire internationale de Paris   | Multi-sector trade shows and trade fairs  | 467,252                 | 2,136                   | 2016 |
| Salon international de l'Aéronautique et de<br>l'Espace / International Paris Air Show                | Defense, civil and military security  | 350,648                 | 2,309                   | 2015 |
| Salon Nautique International de Paris /<br>Paris Boat Show  | Tourism, sports and leisure activities  | 201,823                 | 690                     | 2015 |
| Paris Games Week  | Tourism, sports and leisure activities  | 195,766                 | 154                     | 2015 |
| Maison&Objet  | Habitat, home improvement, office, decoration,<br>gifts and crafts                        | 161,695                 | 5,602                   | 2015 |
| SIMA, Mondial des Fournisseurs de l'Agriculture<br>et de l'Elevage                                    | Agriculture, horticulture, animal husbandry,<br>floristry, fishing and related equipment  | 143,526                 | 894                     | 2015 |
| Salon du livre de Paris / Paris Book Fair   | Art, culture, music and shows   | 109,432                 | 956                     | 2016 |
| Première Vision Pluriel (Première Vision, Expofil,<br>Indigo, Mondamont, Cuir à Paris, Zoom by Fatex) | Textiles, clothing, shoes, leather goods, jewelry<br>and fashion accessories              | 97,660                  | 3,717                   | 2015 |

Source: UNIMEV, OJS



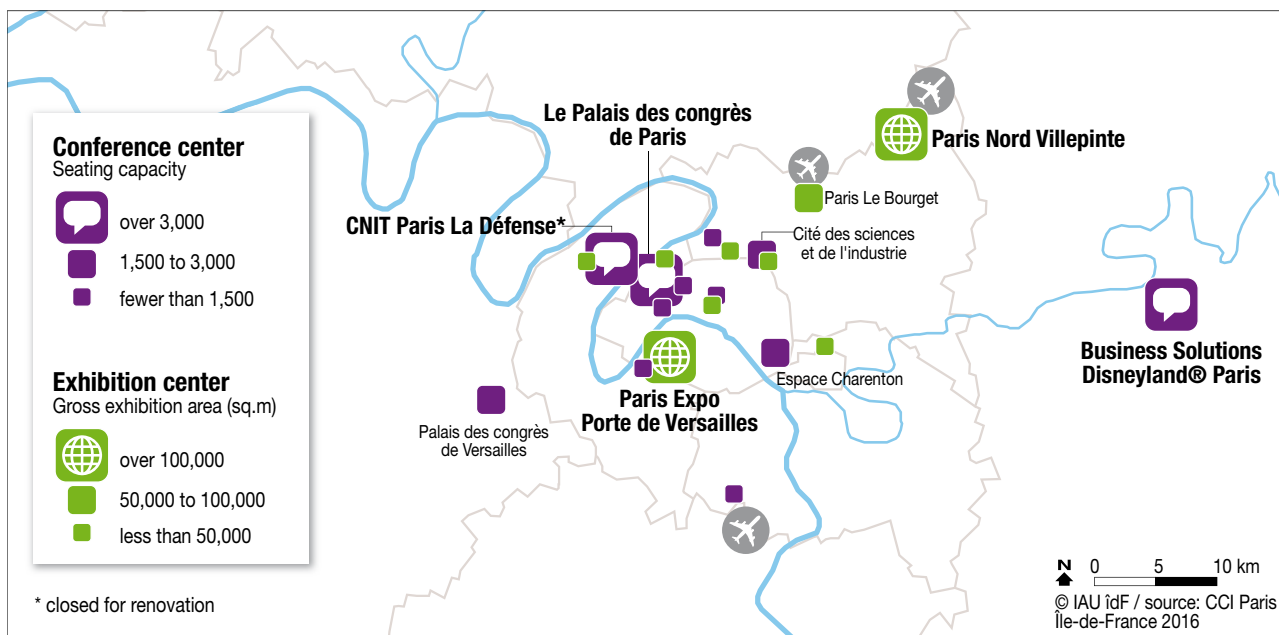
2017

## International Paris Air Show

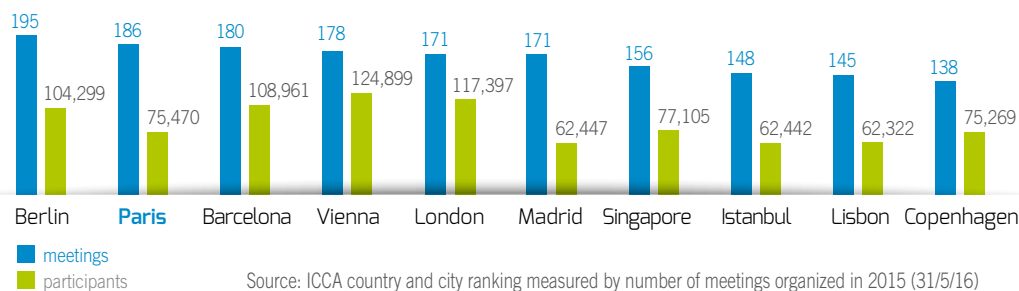
June 19<sup>th</sup> to 25<sup>th</sup>, 2017 at Paris Le Bourget

**Batimat: the International building exhibitions,**  
November 6<sup>th</sup> to 10<sup>th</sup>, 2017 at Paris Nord Villepinte

### CONFERENCE AND EXHIBITION CENTERS IN PARIS REGION (2016)



### PARIS N°2 CITY WORLDWIDE FOR HOSTING BUSINESS MEETINGS

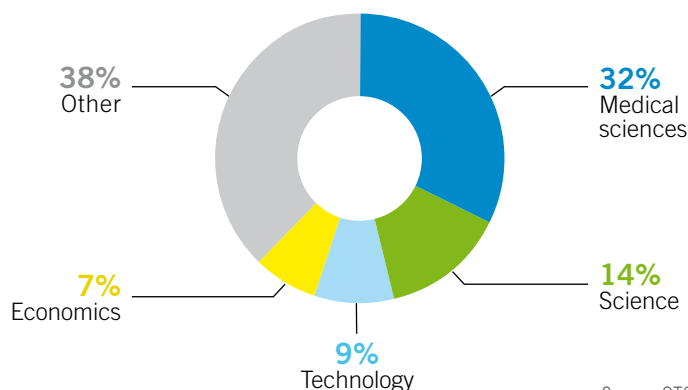


### OVER 1,000 CONVENTIONS PER YEAR IN PARIS REGION

(OTCP, 2015)

**1,004** conventions  
**761,400** participants  
**32%** were foreign visitors (**244,600**)  
**€1.2b** in economic benefits  
**20,200** jobs created by conventions

### BREAKDOWN OF CONVENTIONS BY BUSINESS SECTOR IN PARIS REGION (2015)





Floating gardens © Paris Tourist Office / Marc Bertrand



## The world's leading tourist destination



### WORLD'S TOP TOURIST DESTINATION

**46.7 million** tourists, including **19.4 million** foreigners (**41.5%**)

**172.6 million** night stays, half the total night stays in France, including **86.3 million** for international tourists (**50%**)

**€21b** in economic benefits,  
**93,000** businesses, **524,000** jobs  
(CRT Paris Île-de-France, 2016, data 2015)



### N° 1 WORLDWIDE IN HOTEL CAPACITY

**153,138** rooms

**66.3 million** hotel night stays, half the total night stays in France, including **15.6 million** for international tourists (**23.5%**)

**2,431** hotels

• **885** 3-star hotels : **36.4%**

• **507** 4- or 5-star hotels : **20.6%**

**10** luxury hotels

(INSEE, data as 01.01.16, CRT Paris Île-de-France, 2016, data 2015)

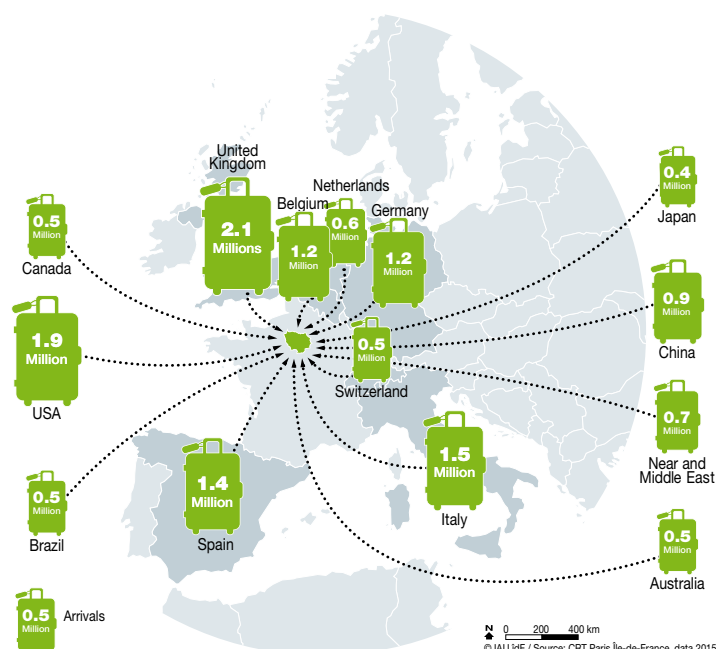
### TOP MOST VISITED TOURIST SITES IN PARIS REGION

(MILLIONS OF VISITORS) (2015)

|   |      |
|---|------|
| Disneyland® Paris                             | 14.8 |
| Notre-Dame de Paris*                          | 13.6 |
| Sacré Cœur de Montmartre*                     | 10   |
| Louvre Museum                                 | 8.4  |
| Palace of Versailles                          | 7.4  |
| Eiffel Tower                                  | 6.9  |
| Musée d'Orsay                                 | 3.4  |
| Centre Pompidou                               | 3    |
| Cité des Sciences et de l'Industrie           | 2    |
| Notre-Dame de la Médaille Miraculeuse Chapel* | 2    |
| Grand Palais                                  | 1.7  |
| Arc de Triomphe                               | 1.7  |
| National Natural History Museum               | 1.6  |
| Army Museum                                   | 1.4  |
| Quai Branly Museum                            | 1.3  |
| Philharmonic of Paris                         | 1.2  |
| Montparnasse Tower                            | 1    |
| Louis Vuitton Foundation                      | 1    |
| Zoological Park of Paris                      | 0.9  |
| Sainte-Chapelle                               | 0.9  |

\* free admission, estimate - Source: CRT Paris Île-de-France, 2016, data 2015

### PROVENANCE OF MAIN FOREIGN TOURISTS IN PARIS REGION (2015)



© IAU IdF / Source: CRT Paris Île-de-France, data 2015





## WORLD CENTER FOR CULTURE (2016)

**4,000** historical monuments  
**140** museums, including **3** of the world's most visited museums: the Louvre, Musée d'Orsay, Centre Pompidou  
**307** cinemas, **1,076** screens  
**361** theatres  
**5** opera houses  
**47** foreign cultural institutes (FICEP)  
**64.1 million** people visited the top **20** Parisian cultural sites in 2015  
**5** million visitors at the **10** largest exhibitions in Paris in 2015  
(INSEE, CRT Paris Île-de-France, 2016, data 2015)

## 4 UNESCO SITES (2016)

- Palace of Versailles
- Paris, the Banks of the River Seine
- Fontainebleau Château and Park
- Medieval City of Provins

## TOP CULTURAL EVENTS IN PARIS REGION (BY NUMBER OF VISITORS) (2015)

| European Heritage Days* | Over 12 million visitors nationwide |
|-------------------------|-------------------------------------|
| Techno Parade*          | 350,000                             |
| Solidays                | 180,000                             |
| Rock en Seine           | 120,000                             |
| Art Paris Air Fair      | 55,735                              |

\*free admission, estimate  
 Source : Repères de l'activité touristique 2016, CRT Paris-Ile-de-France



Quai Branly Museum. Green wall realized by Patrick Blanc.  
 © Musée du Quai Branly / L. Boegly. Architect J. Nouvel

## GREAT DENSITY OF SPORTS-RELATED FACILITIES (2016)

**19,000** sports clubs  
**2.4 million** Paris Region inhabitants registered with a sports club  
**12** leisure resorts (**3,000** hectares)  
**5,500** tennis courts  
**420** swimming pools  
**420** equestrian centers  
**100** golf courses  
**67** high-level sports and training centers  
**1,276** top French athletes  
(MEOS, Clubs and sports licence : 2014-15, IRDS 2016)

## SOME OF THE MOST POPULAR SPORTING EVENTS (2016)

UEFA EURO 2016 (soccer):  
**795,000** spectators  
 Tour de France (cycling race):  
**545,000** spectators  
 Paris Open, Roland-Garros (Tennis):  
**460,000** spectators  
 Paris Marathon: **250,000** spectators  
 Tournament of the Six Nations (rugby):  
**220,000** spectators  
 Paris Bercy Master 1000 (tennis):  
**130,000** spectators  
 Longines Paris Eiffel Jumping (equestrian):  
**120,000** spectators  
(IRDS, 2016)

## Events 2017

- Handball World Championship, January 2017
- Ice Hockey World Championship, May 2017
- Wrestling World Championship, August 2017
- World Championship Open Water Skiing, September 2017

## NATURE IS NEARBY

**21%** cityscape, **28%** woodland  
**50%** agricultural land and **1%** water  
**4** regional nature parks representing **18%** of the land area (218,000 ha)  
**25** Natura 2000 sites

## WORLD CAPITAL OF SHOPPING (2016)

**218** shopping centers

**19** major department stores: Galeries Lafayette, Printemps, Le Bon Marché, BHV...

(Panorama/tradedimensions, Le guide 2017 de la distribution, IAU idF)



Quartz commercial center, Villeneuve-la-Garenne © Quartz

**2 PARIS REGION SHOPPING CENTERS ARE AMONG EUROPE'S TOP 10 CENTERS WITH OVER 20 MILLION VISITORS EVERY YEAR**  
(ANNUAL FOOTFALL, IN MILLION VISITORS 2015)

|  |             |
|--|-------------|
| Westfield Stratford (London, United Kingdom)               | 45.5        |
| <b>Les Quatre Temps (La Défense, Paris Region, France)</b> | <b>44.1</b> |
| Galeria Krakowska (Krakow, Poland)                         | 35.0        |
| Bullring (Birmingham, United Kingdom)                      | 34.7        |
| La Part-Dieu (Lyon, France)                                | 34.3        |
| <b>Forum des Halles (Paris Region, France)</b>             | <b>33.3</b> |
| Westfield (London, United Kingdom)                         | 27.3        |
| Hoog Catharijne (Utrecht, Netherlands)                     | 24.8        |
| Shopping City Sud (Vienna, Austria)                        | 24.6        |
| La Vaguada (Madrid, Spain)                                 | 21.3        |

Source: Sites commerciaux n° 261, september 2016

## GASTRONOMY EXPERIENCE (2016)

**Rungis International Market**, the world's leading fresh produce market

**8.9 billion** euros turnover, **18 million** consumers, **1,186** companies, **6,500,798** entries, **1,666,760** metric tons of food products

The largest organic market in Europe: **5,600 m²**.

**"Saveurs Paris Île-de-France"** is a regional food brand created to highlight close to **1,000** products and **70** kinds of fruit and vegetables: Brie from Meaux, beer from the Vexin, honey and saffron from the Gâtinais, asparagus from Argenteuil, Belle de Fontenay potatoes, etc.

**5,000** farms

**864** agri-food companies

**11,000** jobs

**16,683** restaurants, **118,000** jobs

**107** Michelin-starred restaurants, including **40%** of France's 3-Michelin-star restaurants.

(Cervia, FAFIH, Guide Michelin, Rungis)



Ride in Paris © Paris Tourist Office / Amélie Dupont



**Please do not hesitate to send us your comments and suggestions to improve this new edition: [prkf@parisregionentreprises.org](mailto:prkf@parisregionentreprises.org)**

We thank all the organizations and individuals from whom we have been able to retrieve the data used in producing this document: Advancity, APUR, ARWU, ASTech, Autolib, BNP Paribas Real Estate, Cap Digital, CBRE, Cervia, Paris Île-de-France CCI, Cosmetic Valley, CRT Paris Ile-de-France (Paris Region Tourist Board), Cushman & Wakefield, French Customs, Educso, Elastopole, Eurostat, FAFIH, Ficep, Finance Innovation, Financial Times, Fortune Magazine, Haropa - Ports de Paris, IAU Île-de-France, ICCA, Grand Paris, Guide Michelin, INPI, INSEE, IRDS, La Fonderie, Medicen, Mov'eo, Ministry of Education, Higher Education and Research, OJS, OLAP, ORIE, OST, OTCP (Paris Convention and Visitors Bureau), Panorama/tradedimensions, Paris Aéroport, Paris Region Entreprises, ParisTech, QS Quacquarelli Symonds, Sites commerciaux, SNCF, STIF, Systematic, Times Higher Education, Transilien, Unesco, UNIMEV, Velib.

### Editorial Board:

IAU Île-de-France: Vincent Gollain, Christine Tarquis

Paris Île-de-France Regional Chamber of Commerce and Industry: Yves Burfin, Isabelle Savelli

Paris Region Entreprises: Isaac Marcos Behmaras, Florence Humbert

Maps: Pascale Guéry, IAU-Île-de-France

Graphics: Agnès Simonpaoli

Translation: Tammy Sas-Mayaux

© Paris Île-de-France CCI - IAU-Île-de-France - Paris Region Entreprises  
March 2017



# THINKING OF EXPANDING TO EUROPE? CHOOSE THE RIGHT REGION

**3.5 million m<sup>2</sup>**  
of available  
office space

**N°1 innovation  
hub** in Europe

**Worldwide Top 6**  
in terms of lowest  
business costs\*

\* Source: KPMG « Competitive Alternatives »,  
2016 edition

## PARIS REGION

Home of business opportunities

Design: Studio Anney © Jean-Lionel Dias - Julie Bourges / Picturalink

[www.investparisregion.eu](http://www.investparisregion.eu)  
Tel: +33 (0)175 625 840  
Follow us on twitter: @ParisRegion



**PARIS  
REGION**





# IAU ÎLE-DE-FRANCE

## PARIS REGION AGENCY

NEW HORIZONS NEED BROAD IDEAS

### AN URBAN THINK TANK, A CONCENTRATION OF EXPERTISE

Digital transition, climate change, the creative economy, metropolitan governance, urban resilience, collaborative mobility, innovative ecosystems, sustainable development, sustainable densification... In a world on the move, IAU's experts, armed with the experience acquired on their demanding career paths, bring people together from numerous disciplines and dialogue stimulate to explore regional and metropolitan life in all its dimensions, and to decode the modern world and its metamorphoses.

### A PUBLIC GOOD TO BE SHARED!

Open data resources, interactive maps or collaborative Wikimaps: all IAU publications are now available online.

By providing advices, we help local decision-makers to improve cities and communities quality of life.



[www.iau-idf.fr](http://www.iau-idf.fr)



INSTITUT  
D'AMÉNAGEMENT  
ET D'URBANISME



THE PARIS REGION PLANNING AND DEVELOPMENT AGENCY (IAU ÎLE-DE-FRANCE)

IS A PUBLIC FOUNDATION RECOGNISED TO BE OF PUBLIC UTILITY BY A DECREE DATED 2 AUGUST 1960.

15, RUE FALGUIÈRE - 75740 PARIS CEDEX 15 FRANCE - PHONE : +33 (0)1 77 49 77 49



# **Expanding your network, boosting growth**

**with Paris Ile-de-France Regional Chamber  
of Commerce and Industry**

Are you a foreign company?  
Are you looking for potential business partners  
on the French market?



is at your service

[doingbusinessinparis.com](http://doingbusinessinparis.com)

crédit photo Fotolia - Création Lonsdale

**0 820 012 112**

Service 0,12 € / min  
+ prix appel

[international.cci-paris-idf.fr](http://international.cci-paris-idf.fr)

 **CCI PARIS ILE-DE-FRANCE**



Paris La Défense business district © Fotolia / Xiongmao