

41%  
R&D  
expenditure

37%  
R&D  
workforce

12 Million  
inhabitants

EXPORT

648,000  
students  
16 Universities  
60 Grandes Ecoles

40%  
INNOVATION

EMPLOYMENT

# Paris Region Key Figures 2015



**PARIS  
REGION**  
SOURCE OF INSPIRATION

Synchrotron Soleil (Essonne)  
© Clic'Air / C. Kemarrec



La Défense (Hauts-de-Seine)  
© PRE / Michel Derouault



Roissy Airbus (Val-d'Oise)  
© Sébastien Le Clézio / Hubstart  
Paris Region ®



Rungis International Market  
(Val-de-Marne)  
© Philippe Stisi / Semmaris

Renault Technocentre  
(Yvelines)  
© Sébastien Millier / Renault



Disneyland (Seine-et-Marne)  
© Pascal Aimar



Stade de France (Seine-Saint-Denis)  
© Philippe Guignard / air-images.net



La Géode (Paris)  
© Vincent Gollain







## WELCOME TO THE PARIS REGION, SOURCE OF INSPIRATION

«Paris Region Key Figures» lays out a panorama of the region's business and social life, positioning it among the leading regions in Europe and worldwide. It delivers a summary of the key features in the Paris Region, hoping to contribute to the growth of the Paris Region's economy as it increasingly opens to the world and its opportunities, making the best of ecological transition and innovation.

This publication is produced by the Paris Region Entreprises, the Paris Ile-de-France Regional Chamber of Commerce and Industry and the Paris Region Planning and Development Agency (IAU Île-de-France).





5

WELCOME TO THE PARIS REGION



6

OVERVIEW



8

POPULATION



10

EDUCATION



12

R&D AND INNOVATION



15

ECONOMY AND BUSINESS



20

EMPLOYMENT



22

TRANSPORT AND MOBILITY



24

LOGISTICS



26

REAL ESTATE



28

MEETINGS AND EXHIBITIONS



30

TOURISM AND QUALITY OF LIFE







## THE PARIS REGION, A MAJOR BUSINESS HUB IN EUROPE

Standing at the crossroads of European and worldwide trade, the Paris Region is France's leading economic region and one of Europe's foremost. Consisting of 8 départements and 1,280 municipalities, it hosts a population of 12 million<sup>(1)</sup> (18% of Metropolitan France's population) that is younger than the national average.

### Many advantages:

- its **GDP is about 30% of the nation's wealth and 4.5% of the European Union's GDP**, ahead of Greater London and Lombardy;
- its deep-rooted industrial tradition can be seen in its dense fabric of SMEs/SMIs and its wide range of activities. It brings together a **high density of technology companies** (major groups, SMEs, startups), **world-class competitiveness clusters** and one of **Europe's highest concentrations in the science and technology sectors**;
- as Europe's leading employment area, it boasts a highly qualified workforce: **33% of French executives**. The Paris Region hosts 22% of France's universities, 25% of its engineering schools (other than universities) and 20% of its business schools;
- to boost its appeal even more, the region **benefits from top-notch infrastructure facilities**.  
**The Paris air hub is continental Europe's leader: most major European cities are less than a 2-hour flight away.**  
With 70 ports dotted along 500 km of navigable waterways, the region is also the **second-ranking inland waterway platform in Europe**. Ports de Paris is the **world's leading inland port in the tourism sector** with a fleet of more than 110 boats and 7.5 million passengers transported in 2013;
- its **broadband communication networks** mean that businesses can enjoy technological conditions that will boost their growth;
- lastly, the Paris Region, and in particular inner Paris itself, a city of art, history and culture, remain highly attractive to international tourists. For some years now it has been **the world's leading tourist region**. Moreover, with **680,000 m<sup>2</sup> of exhibition space**, Paris is **ranked number one in Europe in terms of the number of exhibitors welcomed, and number two, behind Milan, for the number of visitors to its international trade shows (over 500 exhibitors)**.

(1) 2014



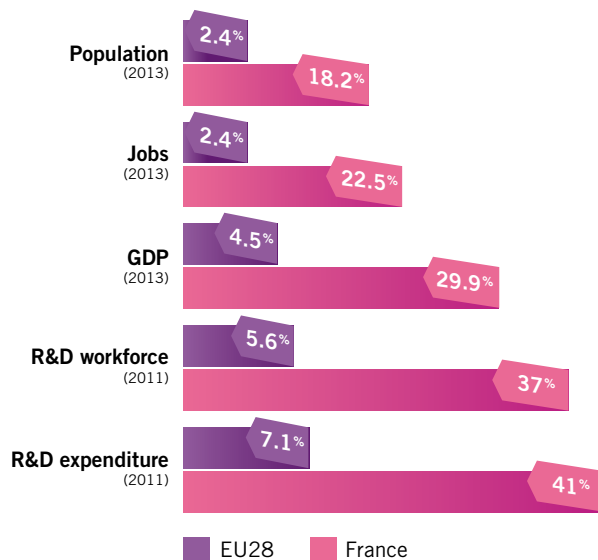
The Banks of the River Seine - Floating gardens © Paris Tourist Office / Marc Bertrand



**One of Europe's  
leading economic  
and innovative  
regions**

## PARIS REGION vs FRANCE & EUROPE

## THE PARIS REGION IN THE EUROPEAN UNION AS AT 01.01.2015



Source: Insee, Eurostat.



## AN INTERNATIONAL REGION

**1.5 million** foreigners (12.5% of the population) (2011)

**70,000** foreign students in universities (2013)

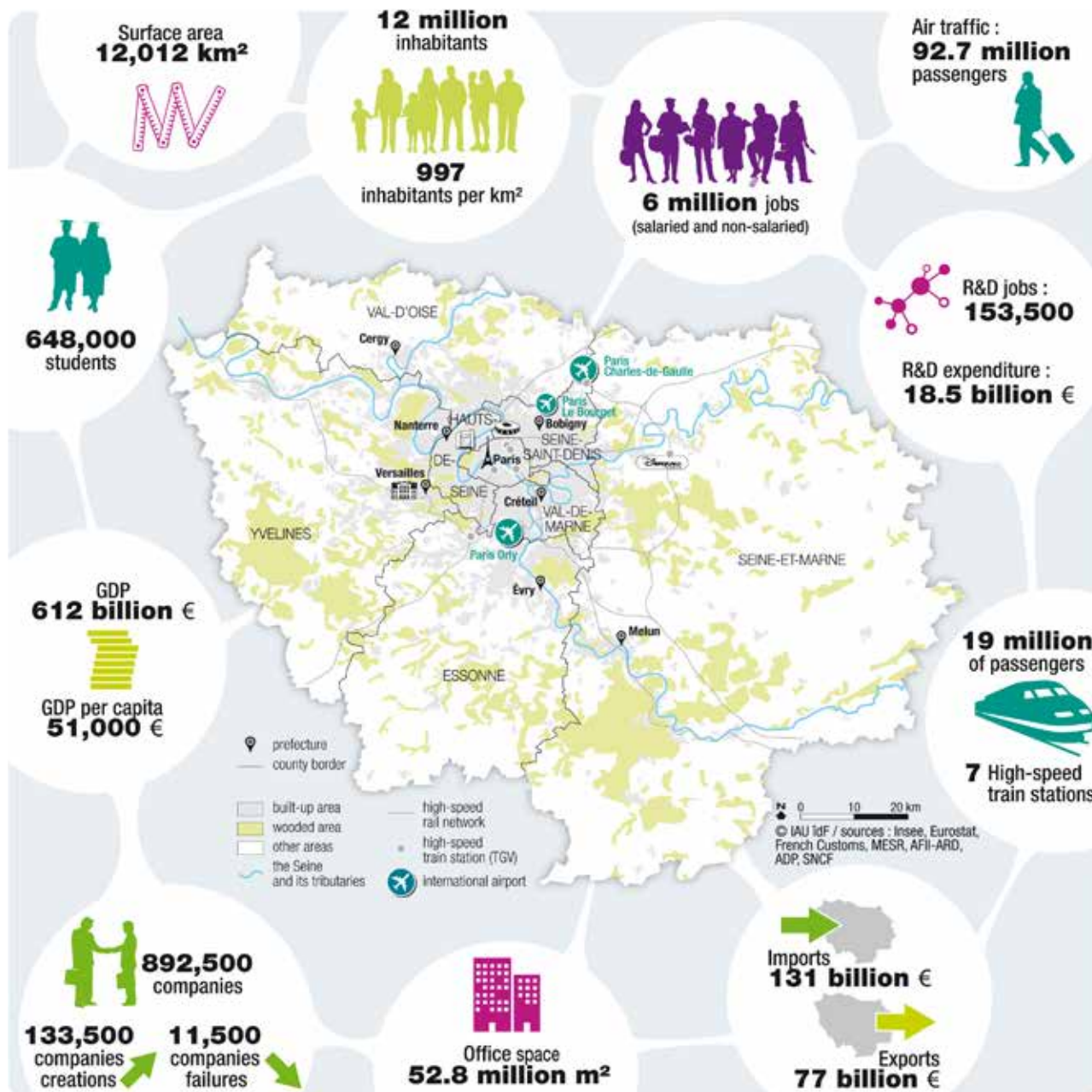
**13,000** foreign establishments (2010)

**279** foreign companies have created or preserved 6,400 jobs in 2013





## PARIS REGION ECONOMIC DATA



Front de seine © Paris Tourist Office / Jacques Lebar



© Julie Guichet / Picturertank



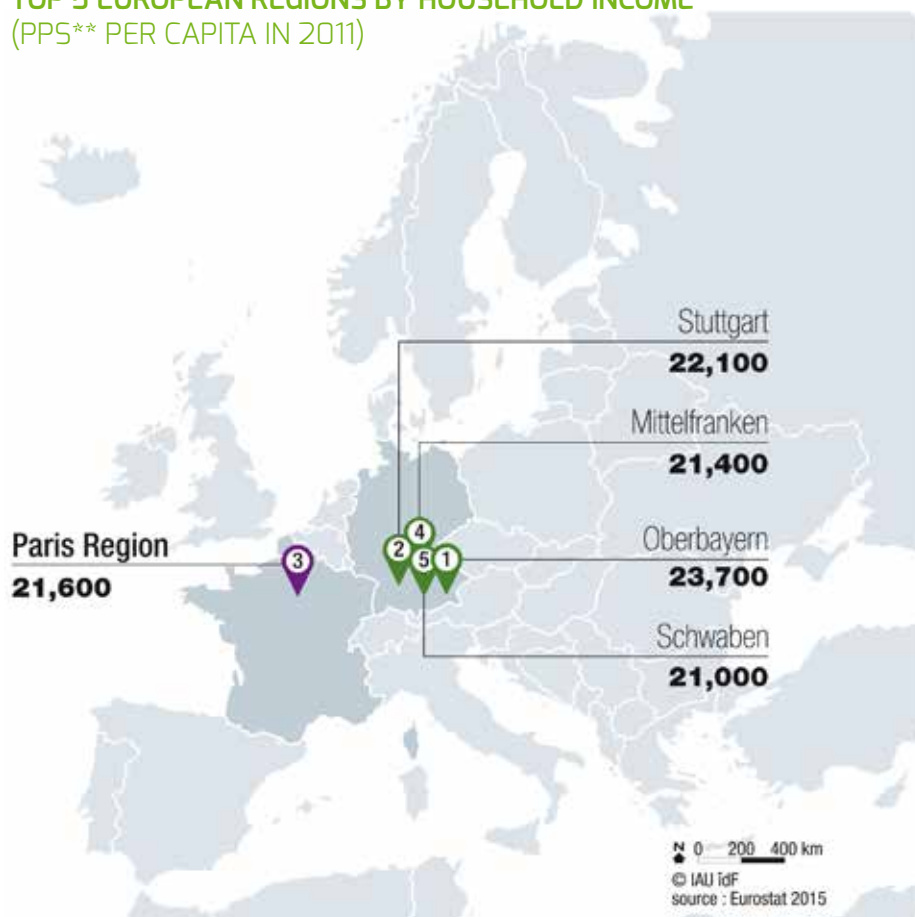
## EUROPE'S MOST POPULATED REGION

**12 million** inhabitants  
**18.2%** of France's population  
**2.4%** of EU28's population

There are 5 towns in the Paris Region with more than **100,000 inhabitants**: Paris, Boulogne-Billancourt, Saint-Denis, Argenteuil and Montreuil

### TOP 5 EUROPEAN REGIONS BY HOUSEHOLD INCOME\* (PPS\*\* PER CAPITA IN 2011)

**THE 3rd  
 WEALTHIEST  
 POPULATION  
 IN EUROPE**



\* excluding Luxembourg  
 \*\* PPS: Purchasing Power Standard





## A YOUNG, DYNAMIC POPULATION

**180,000 births** vs.  
**72,000 deaths**

**15.2‰: birth rate**  
(**12.6‰** for France)

Men's life expectancy  
**80.1 years** (France: 78.5)

Women's life expectancy  
**85.5 years** (France: 84.8)

Paris fertility rate:  
**2.02** children per woman,  
(Dublin: 2.01, London: 1.83,  
Milan: 1.52, Barcelona: 1.4, Munich: 1.38)

### 55% OF THE PARIS REGION POPULATION IS UNDER 40

Age	Paris Region	France	EU28
0-24	32.8%	30.6%	27.1%
25-39	22.0%	18.6%	20.2%
40-69	35.7%	38.1%	39.6%
70 and over	9.5%	12.7%	13.1%

Source: Eurostat, 2013



## A WELCOMING, MULTICULTURAL POPULATION

**12.6%** of the population is foreign,  
i.e. **1.5 million** people

**46%**  
come from Africa

**32%**  
come from Europe

**17%**  
come from Asia

**5%**  
come from America

**0.1%**  
come from Oceania

Source:  
INSEE, 2011





Bibliothèque Sainte-Geneviève © Paris Tourist Office / Alain Potignon



## Paris top world city for studying

(QS Best Student Cities, 2015)



**FROM KINDERGARTEN (2-6 YEARS) TO HIGH SCHOOL (15-18 YEARS),**  
an extensive selection of international schools opened to foreign and French pupils.

**125**  
**INTERNATIONAL**  
**SECTIONS**

British	36	Chinese	11	Japanese	5	Norwegian	3
German	14	Spanish	7	Polish	4	Swedish	3
Portuguese	11	Italian	6	Danish	3	Brazilian	1
American	11	Arab	6	Dutch	3	Russian	1



## A HIGHLY-EDUCATED REGION WITH MANY GRADUATES

40% of the adult population holds at least a bachelor's degree (2011)

**648,000** students  
(**26%** of France's student population)  
**16** universities  
**60** Grandes Ecoles

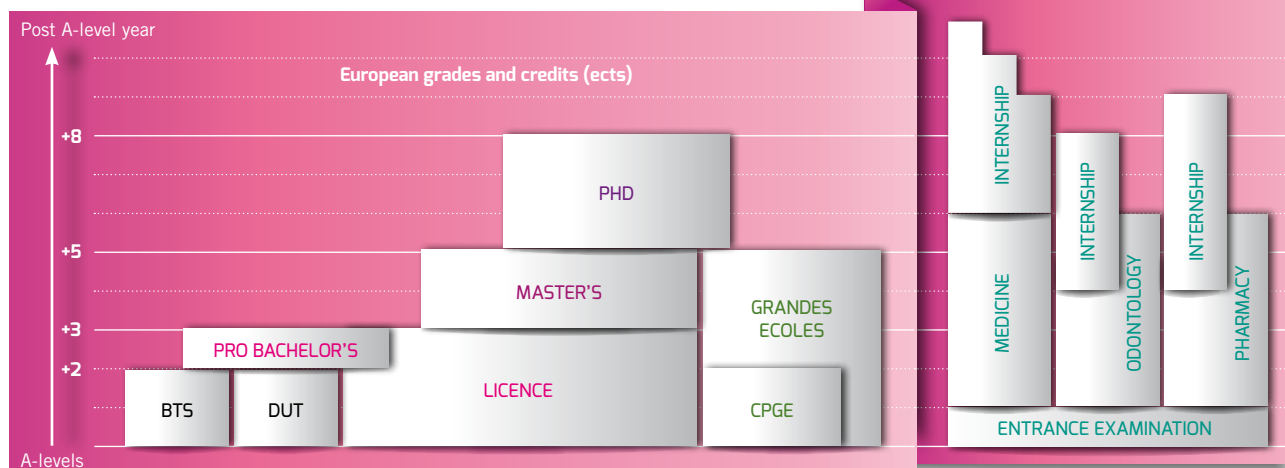
### In university

- ➔ **369,000** students
- Bachelor's degree: 209,000
- Master's degree: 138,000
- PhD: 22,000

### In other further education institutions

- ➔ **279,000** students
- Advanced Technician sections: 45,500
- Business schools: 45,000
- Engineering schools: 33,000
- Preparatory classes to Grandes Ecoles: 27,000
- Other establishments (including Grandes Ecoles): 129,000

## THE FRENCH EDUCATIONAL SYSTEM



Source: MESR (French Ministry of Higher Education and Research)

BTS: Technical sections - DUT: University Diploma of Technology - Grandes Ecoles: Engineering & Business schools - CPGE: class which prepares students to enter Grandes Ecoles

PARIS REGION KEY FIGURES ♦ 2015

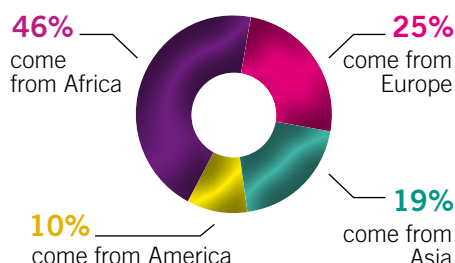




## AN ATTRACTIVE REGION FOR FOREIGN TALENTS

In Paris Region, **1** out of **5** university student is foreign (**18.4%**)

**68,000** foreign students, i.e. 1/3 of all foreign students in French universities



## 11 RESEARCH AND FURTHER EDUCATION CLUSTERS

Stakeholders in further education and research come together to discuss and to unite their diversity and their strengths so as to serve their shared common goals.

<b>Hesam University</b>	This grouping makes up one of Europe's leading clusters in Human and Social Sciences
<b>Paris Sciences et lettres Research University</b>	All disciplines are taught there, from astrophysics to artistic creation, from Mathematics to Classics
<b>Sorbonne Paris Cité Research and Higher Education</b>	The leading further education cluster in France for cultural disciplines, languages, civilizations, health and life sciences
<b>Sorbonne Universities</b>	Sorbonne Universities represents all disciplines and so are like a major international public university such as Berkeley
<b>Université Paris-Est</b>	Focusing on 3 areas: "City, Environment and their Engineering", "Health and Society", and "Image and Media"
<b>Université Paris Lumières</b>	Specialising in human and social sciences and in science and technology
<b>Université Paris-Saclay</b>	Bringing together exceptional scientific potential, uniting 20 varied but complementary establishments: two universities, eleven prestigious university-level colleges and seven research organisations
<b>Université Paris Seine</b>	Focusing on 5 multidisciplinary research areas : Political Studies and Territorial Governance - Heritage, Culture and Creation - Sustainable Development and Green Growth - Education and Health - Science, Engineering and Applied Technology
<b>Campus Condorcet - Paris-Aubervilliers City of Human and Social Sciences</b>	10 partners are founding an international cluster for research and education in Human and Social Sciences in northern Paris
<b>Collegium Ile-de-France</b>	The 3 founding schools develop additional skills in Mechanics, IT and Electronics, relating to numerous complex systems
<b>ParisTech Institute for Sciences and Technologies</b>	Bringing together 12 of France's most prestigious Grandes Ecoles

## COURSES WITH A WORLDWIDE REPUTATION

### Business schools & management training programs

Financial Times, 2014 Rankings

- **European Business Schools:**
  - 2 schools among the Top 5 since 2007: HEC (first 6 times), INSEAD
- **Master in Management:**
  - 3 schools in the World Top 10 since 2005: HEC, ESCP Europe, ESSEC Business School
- **Executive MBA:**
  - 4 MBAs in the Top 20: HEC/LSE/ NYU, Tsinghua University/INSEAD, INSEAD, ESCP Europe

### Universities

Times Higher Education World University Ranking:

- 5 further education institutions in the Top 200: Ecole Polytechnique, Ecole Normale Supérieure, Pierre-et-Marie-Curie University (Paris 6), Paris-Sud University (Paris 11), Paris Diderot University (Paris 7)

Academic Ranking of World Universities:

- 3 universities in the Top 100: Pierre-et-Marie-Curie University (Paris 6), Paris-Sud University (Paris 11), Ecole Normale Supérieure



**Mathematics:**  
2 universities in the top 10 ARWU

**Physics:**  
2 universities in the top 10 ARWU

Sources: Campus Condorcet, Collegium Ile-de-France, Hesam Université, PSL Research University, Paris Tech, Sorbonne Paris Cité, Sorbonne Universités, Université Paris Est, Universités Paris Lumières, Université Paris Seine, Université Paris Saclay

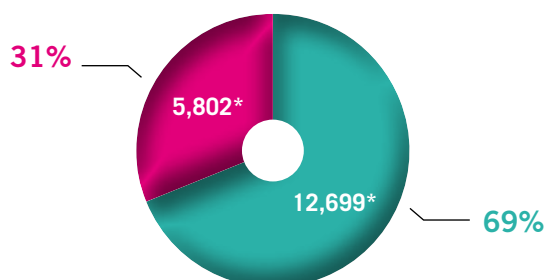


Génopole © Patrick Sordaillet

➔ **153,500 people**  
involved in research  
(including 100,000 researchers)

## ▶ PARIS REGION LEADING EUROPE IN R&D (2011)

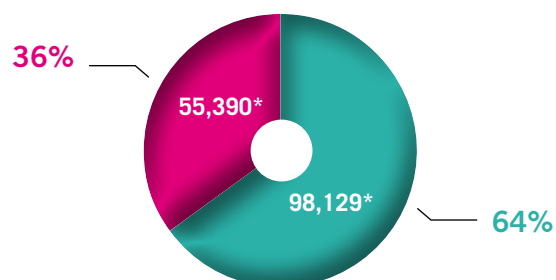
€ **PARIS REGION  
R&D EXPENDITURE: €18.5b**



Private companies  
Public administrations

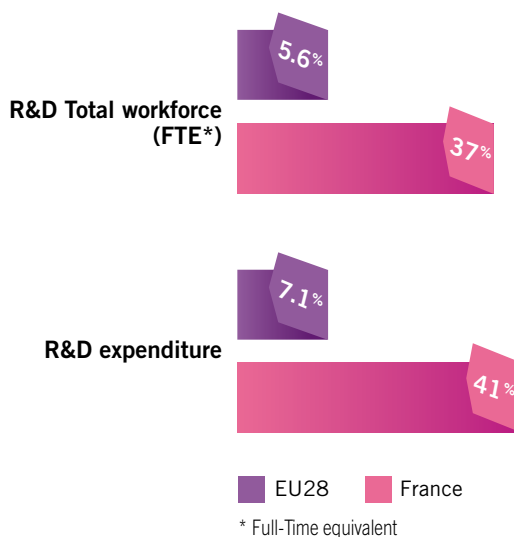
\* In millions of euros  
Source: Eurostat, 2011

👥 **PARIS REGION  
R&D WORKFORCE: 153,500**

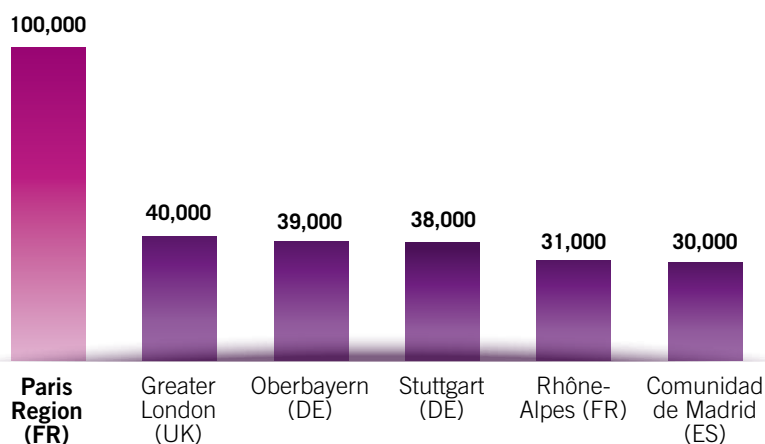


Private companies  
Public administrations

\* In Full-Time Equivalent  
Source: Eurostat, 2011



## EUROPE'S NO. 1 FOR RESEARCHERS



Source: Eurostat, 2011





## THE PARIS REGION'S EXCELLENCE IS INTERNATIONALLY RENOWNED

**31** Nobel Prizes

**11** Fields Medals

## EUROPEAN LEADER IN SCIENTIFIC PUBLICATIONS

**18,000** scientific publications (source: OST, 2013)

**8,000** patents filed (source: INPI, 2013)



The Village of innovations © Futur en Seine

## THE NO. 1 REGION FOR EUROPEAN PATENT APPLICATIONS FILED

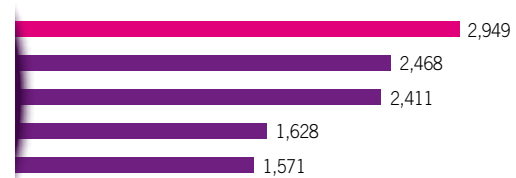
### Paris Region (FR)

Oberbayern (DE)

Stuttgart (DE)

Rhône-Alpes (FR)

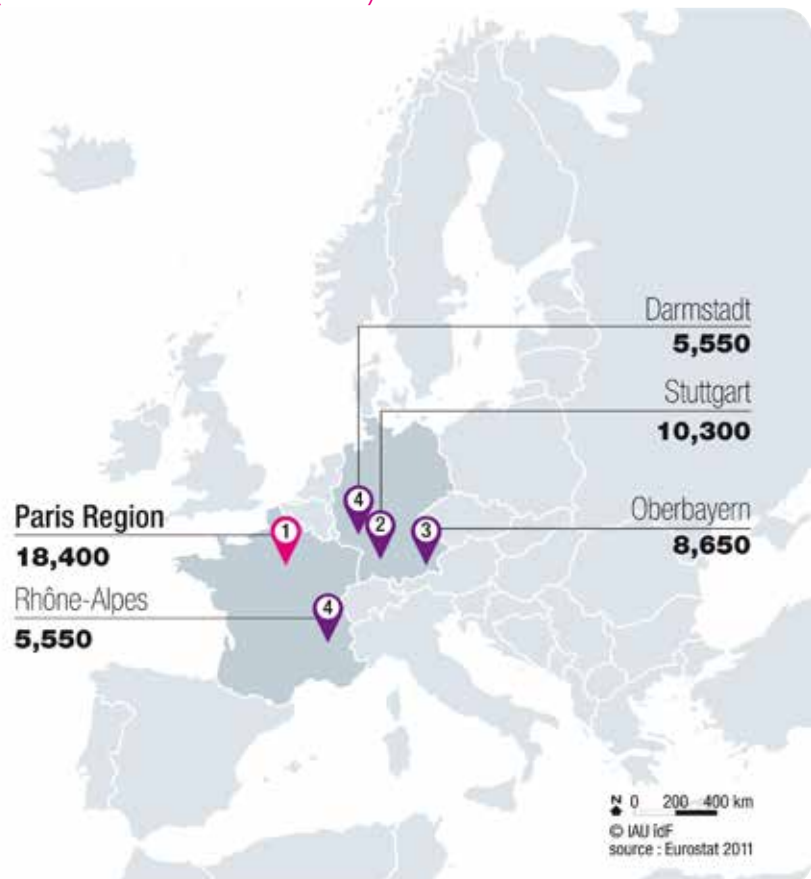
Eindhoven (NL)



Source: OST, 2013

## THE NO. 1 EUROPEAN REGION FOR RESEARCH & DEVELOPMENT EXPENDITURE

## EUROPE'S TOP 5 REGIONS BY R&D EXPENDITURE (MILLIONS OF EUROS IN 2011)



ESIEE - Tech meeting day

© Sébastien Le Clézio / Hubstart Paris Region ®

## COMPETITIVENESS CLUSTERS

More than **3,600 members** including: **2,700** companies and **600** labs and teaching institutions  
**1,500** projects  
**6.6 billion euros** of total funding including **2.6 billion euros** of public sector funding

Cluster name	Field of competence	SMEs + ETI	Major groups	Laboratories and teaching institutions	Total members (including local public authorities)	Projects funded since the cluster was founded	Total funding (€ million)	Including public-sector funding (€ million)
Advancity Paris Region	Green technologies and sustainable cities	174	20	31	260	152	446	172
ASTech Paris Region	Space Transport, Business Aviation, Propulsion	159	41	45	274	47	222,5	95
Cap Digital Paris Region	Digital transformation	827	—	211	1,161	550	1,300	550
Cosmetic Valley <sup>(2013)</sup>	Perfume, cosmetics	302	—	97	399	9	217	102
Elastopole	Rubber and polymer industry	75	—	27	133	42	168	56
Finance Innovation <sup>(2012)</sup> Paris Region	Financial services	—	—	—	259	9	11	5
Medicen Paris Region	High technology for health	170	15	30	217	246	901	410
Mov'eo	Automotive and public transport	207	54	53	371	175	942	385
Systematic Paris Region	Systems and ICT	484	157	142	826	458	2,400	826
<b>TOTAL</b>		<b>2,398</b>	<b>287</b>	<b>605</b>	<b>3,640</b>	<b>1,536</b>	<b>6,608</b>	<b>2,601</b>

Sources: Advancity, ASTech, Cap Digital, Cosmetic Valley, Elastopole, Finance Innovation, Medicen, Mov'eo, Systematic  
 \* ETI: Midsize businesses



Renault Technocentre © Sébastien Millier / Renault





Paris La Défense business district © Stevanzz / Fotolia



**Europe's leading economic region**

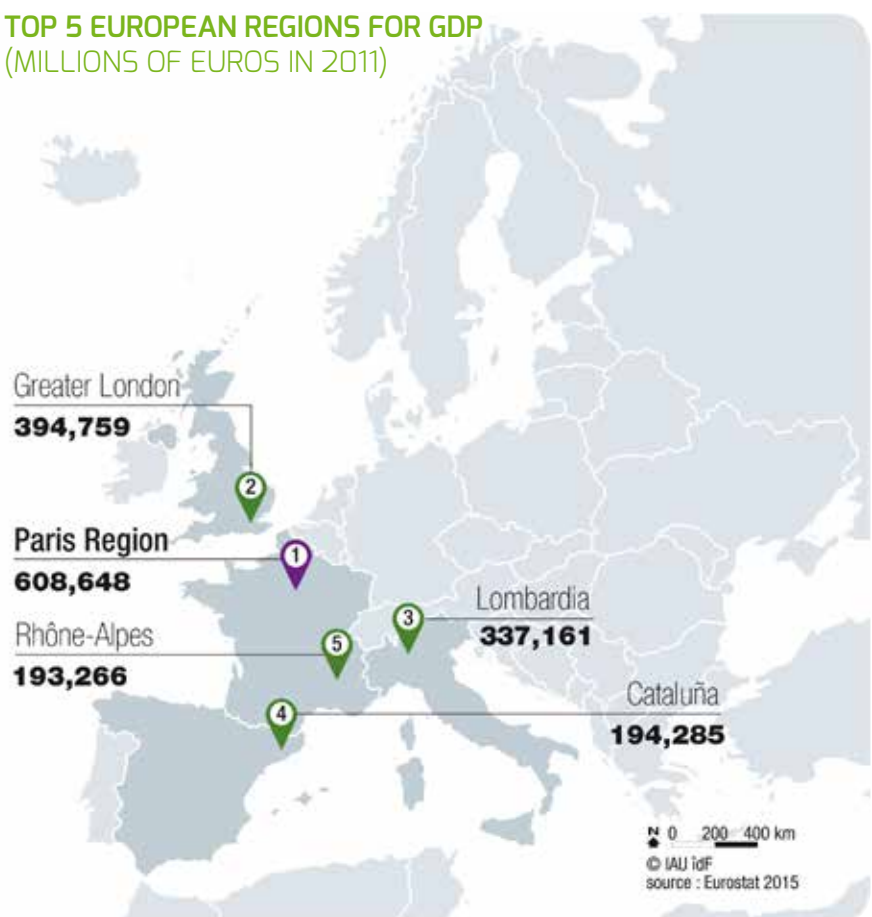


## EUROPE'S TOP GROWTH DOMESTIC PRODUCT

**The Paris Region's GDP is equivalent to that of the Netherlands, and higher than that of Turkey and Switzerland**

**GDP: € 612 billion** (Insee, 2012)  
**30% of France's GDP**  
**4.5% of EU28 GDP**  
**GDP per capita: 51,520 €**

### TOP 5 EUROPEAN REGIONS FOR GDP (MILLIONS OF EUROS IN 2011)



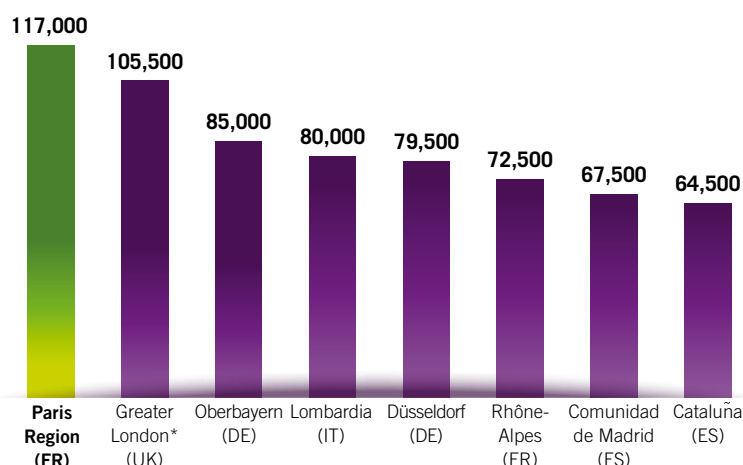
Dassault Falcon Service-Paris Le Bourget  
 © Sébastien Le Clézio / Hubstart Paris Region ®

## A MAJOR BUSINESS HUB IN EUROPE

**892,500** companies (Insee, 2013)

The Paris Region's deep-rooted industrial tradition can be seen in its dense fabric of SMEs/SMIs and its wide range of activities. It brings together a strong share of technology companies (major groups, SMEs, start-up companies), world-class competitiveness clusters and one of Europe's largest concentrations of science and technology.

## EUROPE'S LEADING REGION FOR APPARENT LABOR PRODUCTIVITY



Source: Eurostat, GDP in pps (2011) divided by total number employed (2012), PRE estimate  
\* Greater London = Inner + Outer London

## THE PARIS REGION'S TOP 10 EMPLOYERS\*

COMPANY NAME	WORK-FORCE
SNCF	54,000
La Poste	50,000
Air France	44,500
RATP	44,000
Orange (France Télécom)	32,000
Société Générale	27,000
BNP Paribas	26,000
PSA Peugeot Citroën	25,000
Renault SAS	20,000
Carrefour hypermarkets	18,000

Source: Insee, CLAP (Localised Understanding of Production Facilities), 2012  
\* except civil service

## THE TOP 10 MAJOR PARIS REGION COMPANIES DEPENDENT ON FOREIGN GROUPS (BASED ON SALARIED WORKFORCE)

	Company	Business sector	Company's salaried workforce range
	The Walt Disney Company	Amusement parks and theme parks	10,000 to 14,999
	IBM World Trade EMEA Corporation	Information systems and software consulting	4,000 to 4,999
	Generali Assicurazioni SPA	Reinsurance	3,000 to 3,999
	Logica PLC	Information systems and software consulting	3,000 to 3,999
	Accenture PLC	Information systems and software consulting	2,000 to 2,999
	Saipem SPA	Construction of maritime and riverside works	2,000 to 2,999
	Pfizer Inc	Pharmaceutical wholesale trade (inter-company trade)	1,500 to 1,999
	Securitas AB	Private security	1,500 to 1,999
	General Electric Company	Manufacture of equipment for medical radiation, electro-medical and electro-therapeutic equipment	1,500 to 1,999
	Touristik Union International TUI	Passenger air transport	1,500 to 1,999

Source: INSEE, Esane, Clap and Lifi, 2010





## EUROPE'S NO. 2 REGION FOR THE ESTABLISHMENT OF MAJOR FOREIGN GROUPS

**13,000** establishments  
**27%** of foreign investment established in the country  
**600,000** jobs

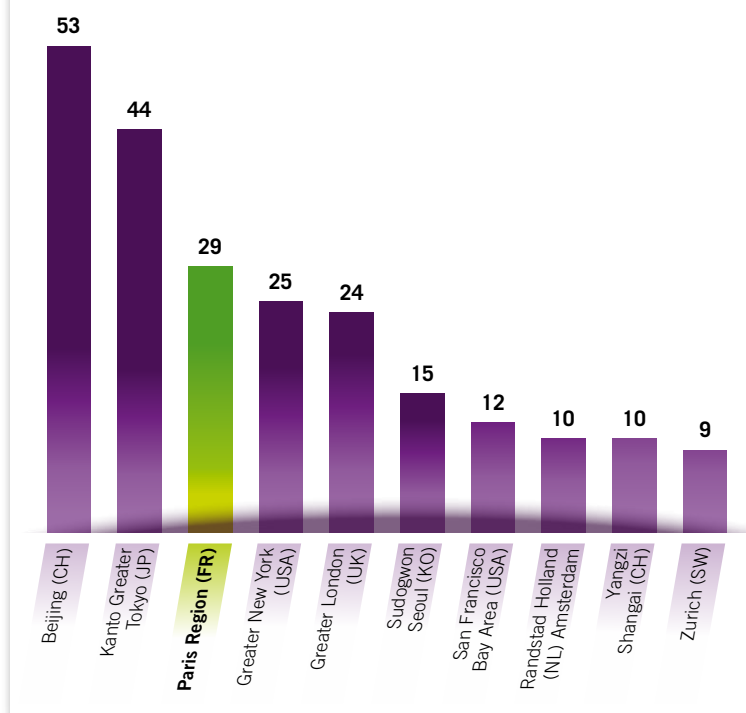


## IN 2013

**279** foreign companies coming from **35** countries and creating **6,460** jobs, including:

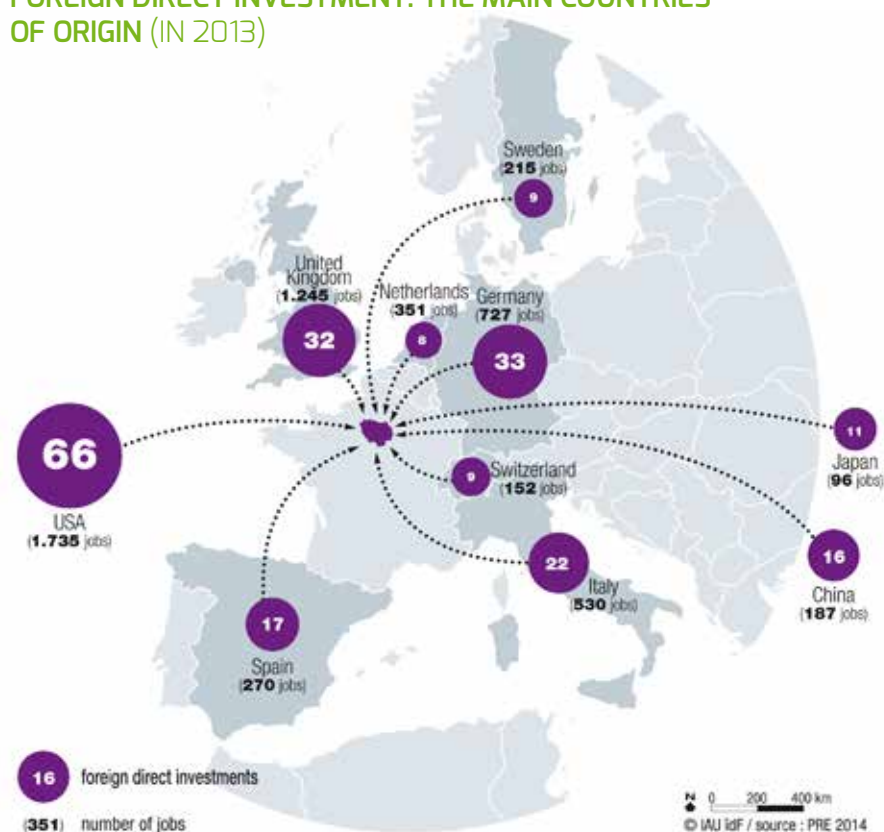
- **165** coming from Europe (**4,220** jobs)
- **75** coming from America (**1,854** jobs)
- **35** coming from Asia (**361** jobs)

## PARIS REGION NO. 1 IN EUROPE AND NO. 3 IN THE WORLD FOR HOSTING THE 500 TOP WORLD'S COMPANIES HEADQUARTERS



Source: Fortune Magazine, Global 500, 2014  
 \*Greater London = Inner + Outer London

## FOREIGN DIRECT INVESTMENT: THE MAIN COUNTRIES OF ORIGIN (IN 2013)



Roissy pôle © Sébastien Le Clezio / Hubstart Paris Region ®



## LEADING GATEWAY TO EUROPE'S IMPORT/ EXPORT MARKET <sup>(2013)</sup>

### Imports: €131b

**26%** of France's imports

#### Main imports

Natural hydrocarbons **12%, €1.6b**

Automotive manufacturing  
products **11%, €14.4b**

Telephones and communication  
equipment **6%, €7.3b**

### Exports: €77b

**18%** of France's exports

#### Main exports

Automotive manufacturing  
products **10%, €7.8b**

Space and aeronautics  
manufacturing products **9%, €7b**

Pharmaceutical products **8%, €6.1b**

Source: French Customs, 2013



Airbus Helicopters © Sébastien Le Clézio / Hubstart Paris Region ®

## THE PARIS REGION'S LEADING BUSINESS PARTNERS IN 2013

Imports			Exports		
Country	Value (€ billion)	%	Country	Value (€ billion)	%
Germany	18.6	14	Germany	8.3	11
China	17.8	14	United States	7.7	10
Belgium	15.6	12	Italy	5.1	7
United States	8.9	7	United Kingdom	5.1	7
Spain	7.9	6	Belgium	4.6	6
Italy	7.6	6	Spain	4.3	6
United Kingdom	5.4	4	Switzerland	4.1	5
Netherlands	4.6	4	China	2.8	4
Switzerland	3.7	3	Netherlands	2.2	3
Japan	3	2	Hong Kong	2.1	3

Source: French Customs, 2013



## A multi-specialised region

© Dariusz Kopestynski / Fotolia © B. Delpeuch / CCI Paris Ile-de-France  
© Spaulding / Fotolia © Photodisc

### KEY SECTORS



Source: Paris Region Entreprises, 2014

\* M.I.C.E.: Meetings, Incentives, Conventions, Exhibitions





© Y. Arcurs / Fotolia



**No. 1 employment pool in Europe**



## AN ATTRACTIVE REGION

**6 million** jobs, **22.5%** of jobs in France, working population: **66.8%**

### THE PARIS REGION'S POPULATION BY SOCIO-PROFESSIONAL CATEGORY

White collar workers	1.65 M	27.4%
Executives, higher intellectual professions	1.62 M	26.9%
Intermediate professions	1.57 M	26.1%
Blue-collar workers	894,500	14.8%
Craftspeople, retailers, business leaders	280,000	4.6%
Farmers	8,500	0.1%

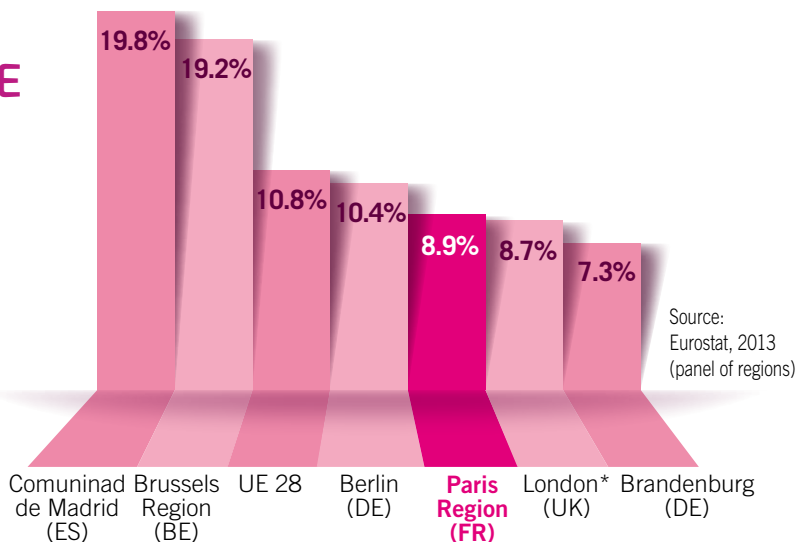
Source: Insee, 2012 - Total population 15 years and older.



Tremblay-en-France Geothermal Plant  
© Sébastien Le Clézio / Hubstart Paris Region ®



## A RELATIVELY LOW UNEMPLOYMENT RATE





## BREAKDOWN OF BUSINESSES AND JOBS BY BUSINESS SECTORS IN THE PARIS REGION

Business sector	Establishments	Jobs
Sciences and technology, administrative and support services	238,908	799,891
Trade, automotive and motorcycle repair	192,908	690,465
Information and communication	69,236	367,928
Transport and warehousing	34,729	364,567
Finance and insurance	44,624	324,065
Construction	97,700	279,864
Accommodation and catering	54,860	276,149
Public administration, education, human health and social action	102,621	188,030
Manufacturing of other industrial products	28,364	174,505
Other services	59,738	114,484
Manufacturing of transport equipment	492	78,271
Extractive industries, energy, water, waste management, cleaning	6,955	77,414
Manufacturing of electrical, electronic and computer equipment. Manufacturing Machines	3,041	74,817
Real-estate	47,804	72,818
Manufacturing of food, beverages and tobacco products	7,316	47,142
Coking and refining	44	1,614
<b>TOTAL</b>	<b>989,340</b>	<b>3,932,024</b>

Source: INSEE, 2013



Paris subway © Patricia Lecomte / Picturertank



**Connected to Europe  
and the world**



## THE PARIS REGION, GATEWAY TO EUROPE AND THE WORLD: 500 MILLION CONSUMERS WITHIN 3 HOURS BY PLANE AND/OR TRAIN

### By plane (source: ADP, 2014)

**3 international airports**

**92.7 million** passengers &  
**693,000** flights

**Paris Charles-de-Gaulle**

**NO. 2** in Europe for passenger traffi

- **63.8 million** passengers
- **465,000** flights

**Paris-Orly**

- **28.9 million** passengers
- **228,000** flights

**Le Bourget**

Europe's leading business airport

- **54,000** flights

**10** airfields and **1** heliport

### By train (source: SNCF, 2014)

**7** TGV (high-speed train) stations

**19 million** TGV passengers travelling  
from Paris to the main European  
destinations

**1,800 km** of railway tracks



© Paris Region Entreprises





## ONE OF THE BEST AND LARGEST PUBLIC TRANSPORT SYSTEMS IN THE WORLD

### Shared public transport

#### Velib

**24,000** bikes

**1,800** stations within Paris and

**30** municipalities bordering the capital

**267,000** current subscribers

**35 million** Velib rentals per year

**3,500 km** of bike lanes

#### Autolib

**2,500** vehicles in service

**873** Autolib stations

**5,000** recharging spots

**64** municipalities

### IN 2013, 4.2 BILLION TRIPS BY PUBLIC TRANSPORT

Mode of transport	Lines	Trips (millions)
Underground	14	1,527
RER*	5	469
Transilien train**	8	746
Tramway	8	190
Bus	1,442	1,274
<b>Total</b>	<b>1,477</b>	<b>4,205</b>

Source: STIF, 2013 - \*High Speed metro - \*\*Light rail



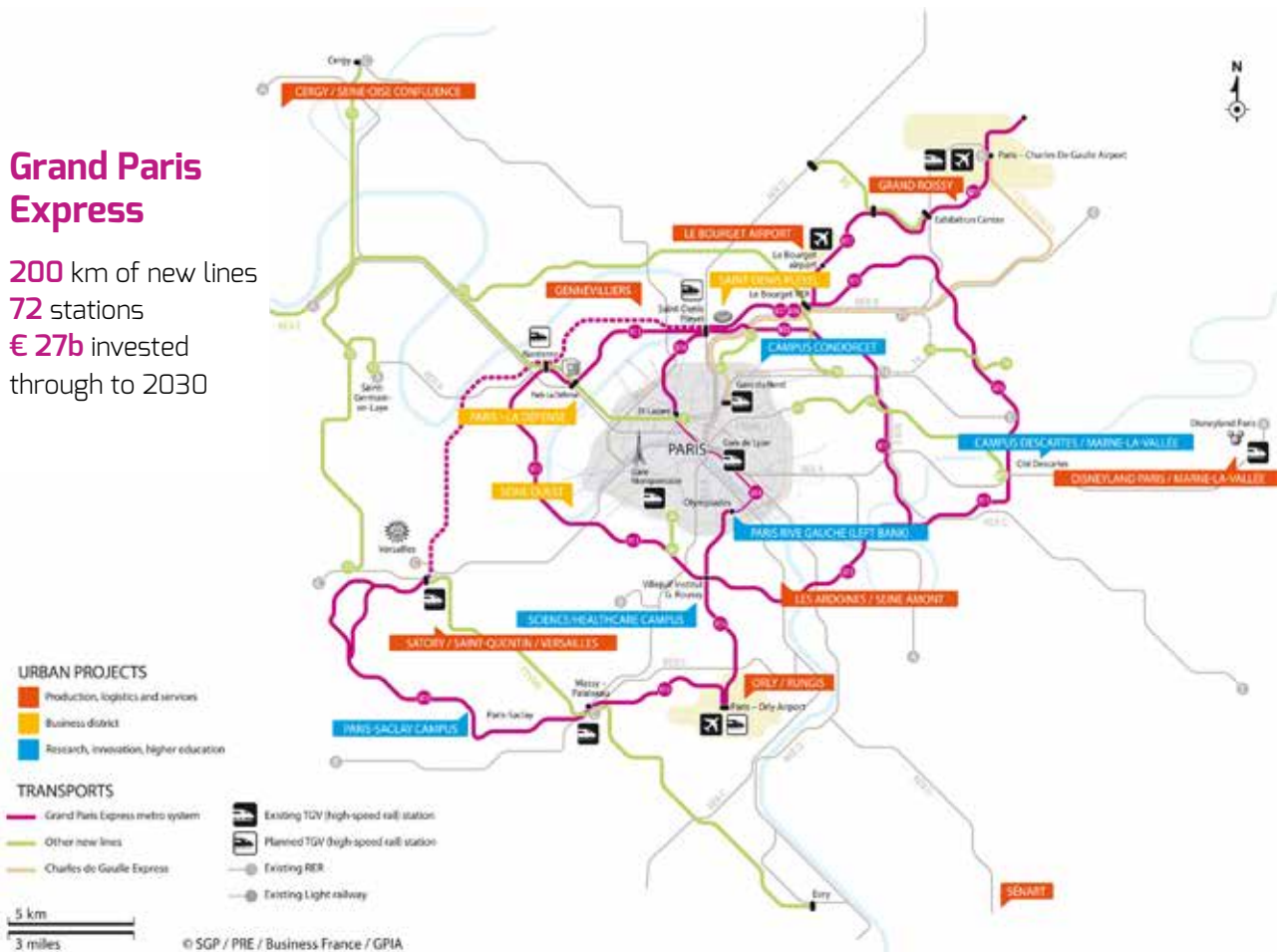
## STILL LOOKING AHEAD WITH THE GRAND PARIS PROJECT, THE LARGEST URBAN PROJECT IN EUROPE PROVIDING A NEW TRANSPORT NETWORK

### Grand Paris Express

**200 km** of new lines

**72** stations

**€ 27b** invested through to 2030





Barge on the River Seine © Agnès Janin / Haropa



## Exceptional transport infrastructure



### AN OUTSTANDING LOGISTICS INFRASTRUCTURE

**Warehouses** > 5,000 m<sup>2</sup>



Source : CBRE, BNP Paribas Real Estate



### A HIGHLY COMPETITIVE LOGISTICS HUB

**Yearly rent per prime m<sup>2</sup>**  
**Warehouses** over 5,000 m<sup>2</sup> (in €)

London (UK)	185
Moscow (RU)	96
Amsterdam (NL)	85
Birmingham (UK)	83
Munich (DE)	78
Frankfurt (DE)	74
Hamburg (DE)	68
Paris Region (FR)	55

Source: European Logistics Market, Property Report Q2 2014  
BNP Paribas Real Estate, H1 2014

### Road and waterway logistics

**10,000 km** of roads

**613 km** of motorways (2013)

**500 km** of navigable waterways

**70** urban ports

### Freight

**Air 2.4** million tonnes (2012)

**Rail 23.6** billion tonne-kilometres carried (2012)

**Waterway 20.4** million tonnes (2014)

**Road 23.1** billion tonne-kilometres carried (2013)

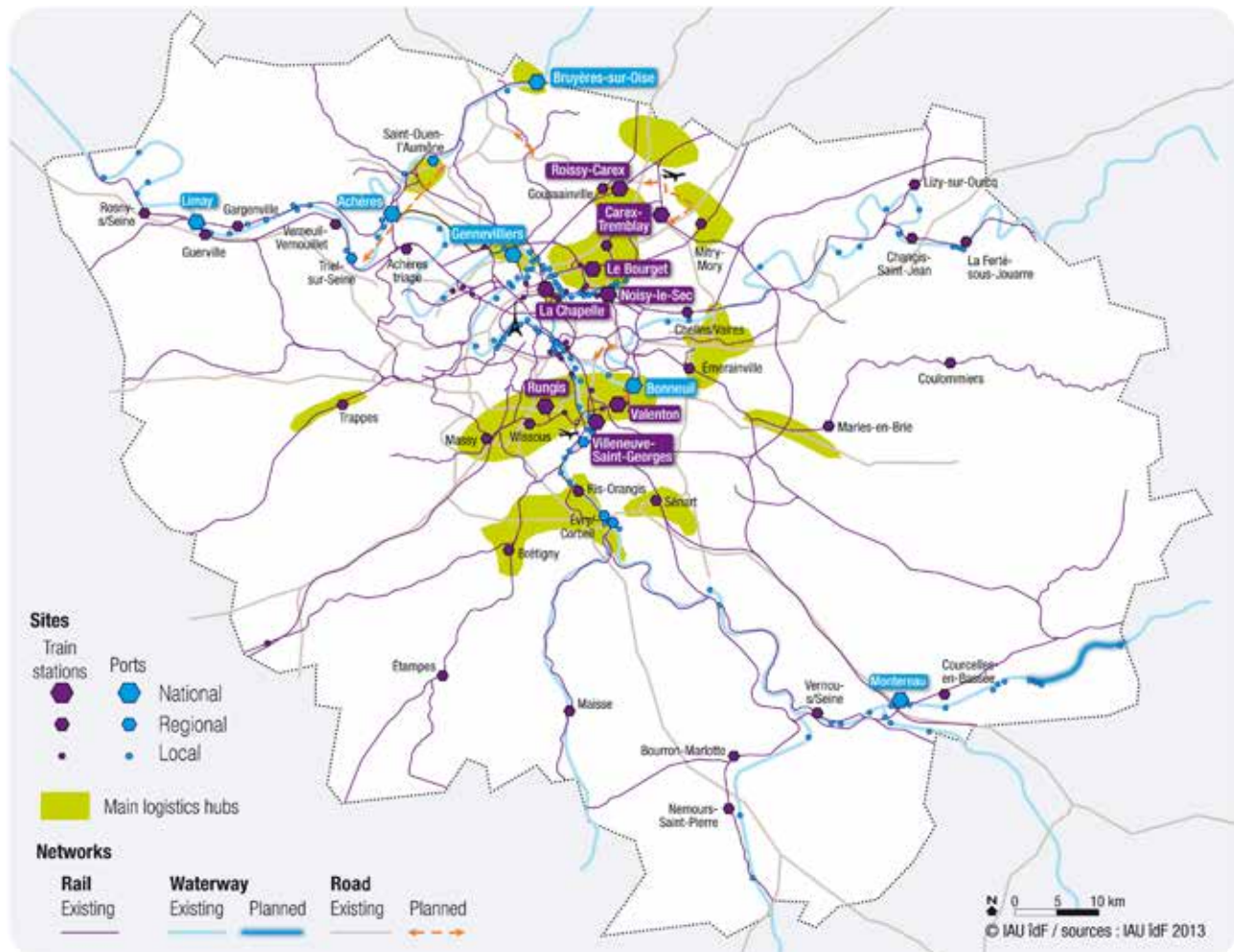
### Waterway traffic

Container volume in the Paris Region  
increased by 65% between 2008 and 2013





## INFRASTRUCTURE AND LOGISTICS PROJECTS IN THE PARIS REGION



## THE 6 MULTIMODAL PLATFORMS MANAGED BY HAROPA-PORTS DE PARIS PROVIDE EXTENSIVE CONNECTIONS TO TRANSPORT INFRASTRUCTURES

Multimodal platform	Waterway	Waterway & Maritime	Maritime	Railway	Oil Pipeline	Road	Air	Public Transport	Traffic (millions of tonnes)
Gennevilliers	x	x		x	x	x		x	3.6
Bonneuil-sur-Marne	x	x		x		x		x	1
Limay-Porcheville	x	x	x	x		x	x	x	0.9
Montereau-Fault-Yonne	x	x		x		x	x		0.316
Bruyères-sur-Oise	x	x		x		x	x		0.17
Evry	x	x	x	x		x	x		-

Source: Haropa - Ports de Paris, 2013 annual report





Quai des entrepreneurs business incubator © Denis Bourges / PRE



**Europe's  
largest  
inventory  
of business  
real estate**



## OFFICE SPACE (2014)

Surface area **52.8 million m<sup>2</sup>** (ORIE)  
Take up **2.1 million m<sup>2</sup>** (CBRE, Q3 2014)  
Available now **4 million m<sup>2</sup>** (CBRE, Q3 2014)  
Investment amount **€17b** (Immostat)



## BUSINESS PREMISES (DTZ Q3 2014)

Surface area **30 million m<sup>2</sup>**  
Take up **633,000 m<sup>2</sup>**  
Available now **2.5 million m<sup>2</sup>**

### TOP 10 OFFICE SPACE MARKETS BY OCCUPANCY COSTS (2014)

2014 Rank	Country	City	District	Occupancy costs (€/m <sup>2</sup> /year)
1	UK	London	West End	2,122
2	China	Hong Kong	CBD	1,432
3	Russia	Moscow	CBD	1,092
4	China	Beijing	CBD	1,027
5	Japan	Tokyo	CBD	1,003
6	USA	New York	Midtown	993
7	Brazil	Rio de Janeiro	Zona Sul	991
8	India	New Delhi	Connaught Place	959
9	<b>France</b>	<b>Paris</b>	<b>CBD</b>	<b>895</b>
10	Australia	Sydney	CBD	844

Source: Office Space Across the World 2014, Cushman and Wakefield  
\* CBD: Central Business District



## A MULTITUDE OF HOSTING VENUES

**1,350** business activity areas

Over **100** business incubators,  
including **20** with PRIBL certification  
(Paris Region International Business Location)

**100** co-working venues

**135** business centres and telecentres



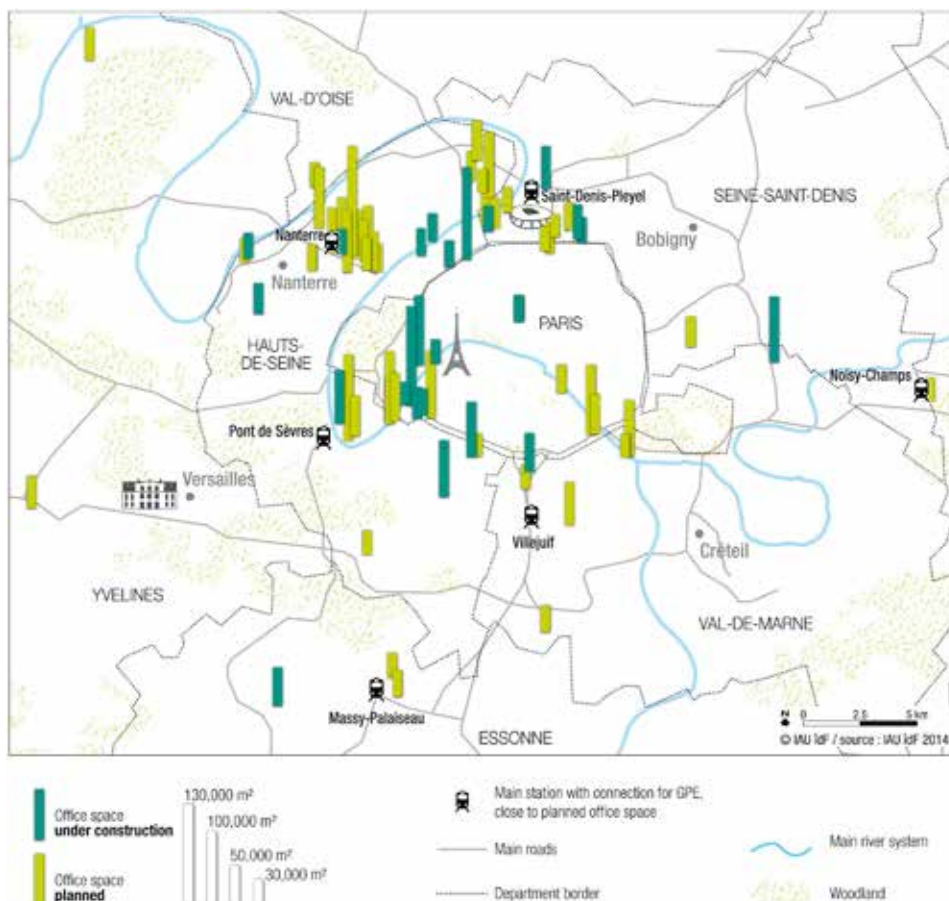
NUMA Workshop © Denis Bourges

## PARIS, THE WORLD CAPITAL OF INCUBATORS

Many new incubators are opening every month in the Paris Region, backed by public players and at the initiative of private investors (e.g. Partech Ventures).

In 2016, Paris will be home to the biggest startup incubator in the world: 30,000 m<sup>2</sup> of co-working and office spaces will be dedicated to host 1,000 startups, in Halle Freyssinet (Paris 13<sup>th</sup>).

### MAIN OFFICE CONSTRUCTION PROJECTS THROUGH TO 2020 WITH SURFACE AREA GREATER THAN 30,000 M<sup>2</sup>





Cartes Secure Connexions © Anne-Emmanuelle Thion



**Europe's top  
trade show  
hosting region**



## AN OUTSTANDING WORLD-CLASS DESTINATION FOR ORGANISING TRADE SHOWS (2013)

Exhibition surface: **680,000 m<sup>2</sup>** (source: CRT)

**395** trade shows

**97,000** exhibiting companies, including **25,000** foreign companies (26%)

**8.8 million** visitors, including **573,000** foreigners (6.5%)

**€3.9b** in economic benefits

**62,000** jobs generated by trade shows

### TOP 10 INTERNATIONAL TRADE SHOWS HELD IN THE PARIS REGION (BY NUMBERS OF VISITORS AND EXHIBITING COMPANIES)

Names	Business sector	Visitors (1st visit)	Exhibiting companies	Year
Mondial de l'Automobile (Paris Motor Show)	Transport, logistics, traffic and their equipment	1,230,633	286	2012
Salon International de l'Agriculture (Paris International Agricultural Show)	Agriculture, horticulture, livestock farming, floristry, fishing and their equipment	692,324	1,052	2014
Foire internationale de Paris	Multi-sector trade shows and fairs	568,427	2,130	2014
Salon international de l'Aéronautique et de l'Espace (International Paris Air Show)	Defence, civil and military security	390,198	2,277	2013
Salon Nautique International de Paris (Nautic Paris Boat Show)	Tourism, sports and leisure activities	240,624	714	2013
Japan expo	Tourism, sports and leisure activities	240,189	688	2014
Salon du Livre de Paris (Paris Book Fair)	Art, culture, music, shows	176,176	1,126	2014
Paris Games Week	Tourism, sports and leisure activities	167,355	79	2013
Première Vision Pluriel (Première Vision, Expofil, Indigo, Mondamont, Cuir à Paris, Zoom by Fatex)	Textiles, clothing, shoes, leather goods, jewellery and fashion accessories	167,037	3,745	2013
Salon de la Moto (Motorcycle Show)	Transport, logistics, traffic and their equipment	163,026	371	2011

Source: Paris Ile-de-France CCI, Tourism Conventions and Tradeshow department

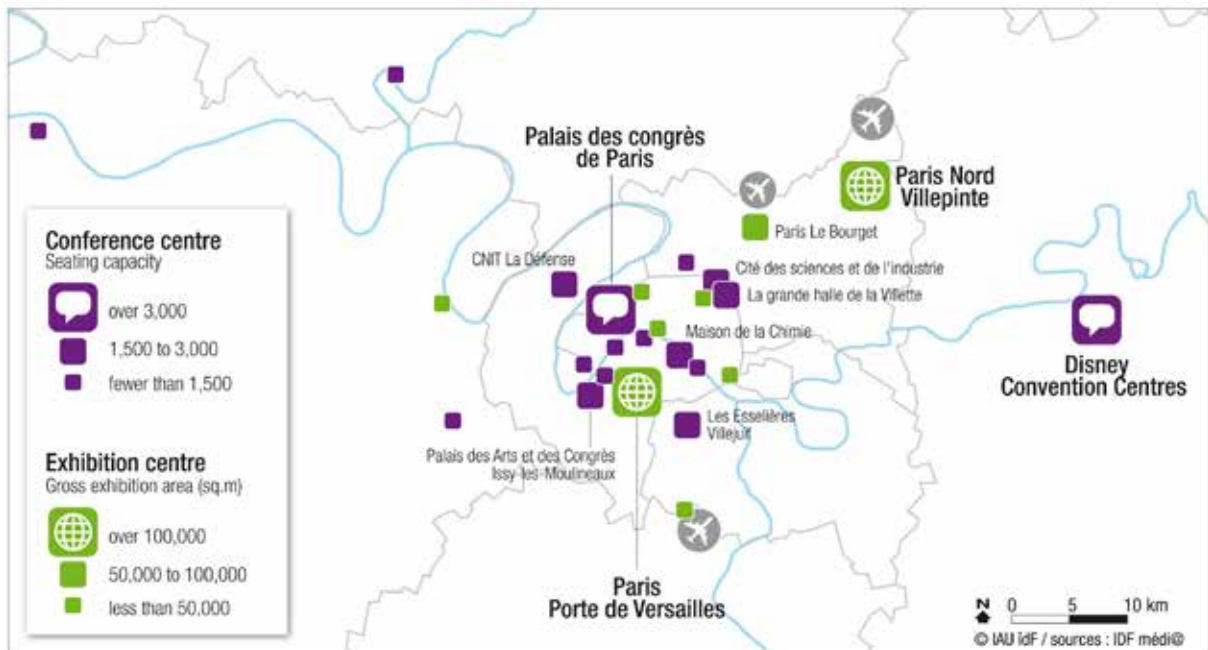




## 2015

Paris Air Show from June 19<sup>th</sup> to 21<sup>th</sup>, 2015 at Le Bourget Exhibition Centre  
Batimat from November 2<sup>nd</sup> to 6<sup>th</sup>, 2015 at Paris Nord Villepinte

### CONFERENCE AND EXHIBITION CENTRES IN THE PARIS REGION IN 2014



**PARIS NO.1 CITY  
WORLDWIDE FOR HOSTING  
BUSINESS MEETINGS**



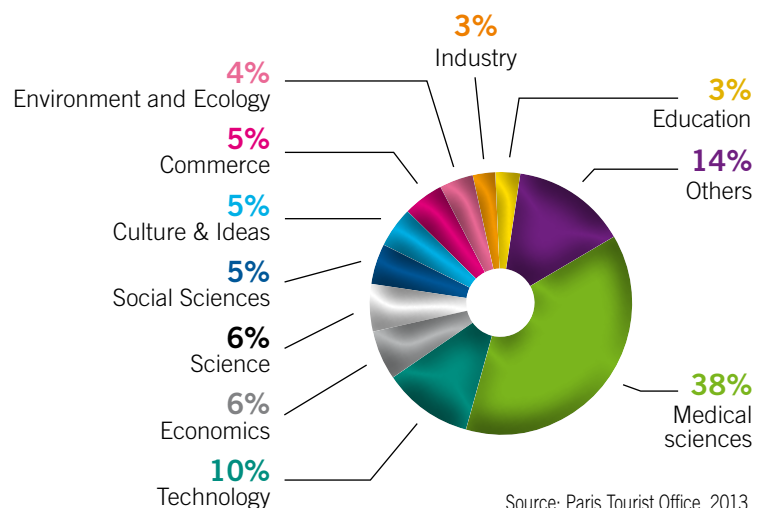
Source: ICCA country and city ranking measured by number of meetings organised in 2013



**THE PARIS REGION  
BREAKS THE 1,000  
CONVENTION  
BARRIER** (2013)

**1,055** conventions  
**752,000** participants,  
**31%** foreign visitors (233,600)  
**€1.2b** in economic benefits  
**20,000** jobs generated by  
conventions

### BREAKDOWN OF CONVENTIONS BY BUSINESS SECTOR (2013)



Source: Paris Tourist Office, 2013



Fontainebleau Chateau and Park © CRT Paris Ile-de-France



**The world's  
leading tourist  
destination**



## WORLD'S TOP TOURIST DESTINATION

**47 million** tourists, including  
**42%** foreigners (20 million)  
**€22b** in economic benefits  
**79,000** businesses  
**515,000** jobs (8.4% of Paris Region)



## NO. 1 WORLDWIDE IN HOTEL CAPACITY

**151,000** rooms  
**184 million** night stays, over half the total  
night stays in France including  
**98 million** for international tourists (53%)  
**2,400** listed hotels  
**37%** are 3-star hotels (873)  
**18%** are 4- or 5-star hotels (425)  
**8** luxury hotels

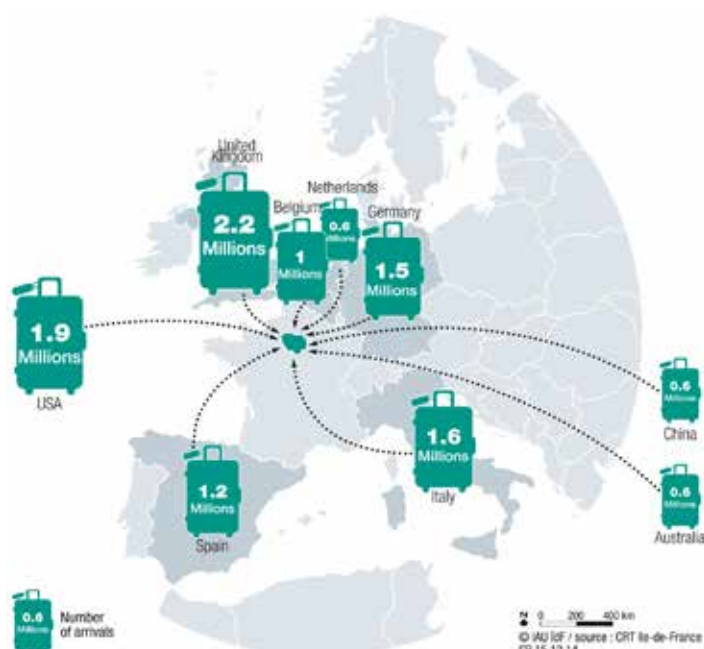
## TOP 10 MOST VISITED TOURIST SITES

(MILLIONS OF VISITORS) (2013)

Disneyland® Paris	14.9 M
Notre-Dame de Paris*	14 M
Sacré-Cœur Montmartre*	10.5 M
Louvre Museum	9.2 M
Versailles	7.5 M
Eiffel Tower	6.7 M
Pompidou Centre	3.7 M
Orsay Museum	3.5 M
Cité des Sciences et de l'Industrie	2.6 M

Source: Repères de l'activité touristique 2014, CRT Paris Ile-de-France  
\* free admission, estimate

## PROVENANCE OF FOREIGN TOURISTS IN THE PARIS REGION





## CULTURE (2014)

**4,000** historical monuments  
**143** museums (including **3** of the world's most visited museums: the Louvre, Pompidou Centre, Orsay Museum)  
**310** cinemas  
**350** theatres  
**5** opera houses  
 More than **26,000** concerts (**8 million** tickets sold)  
**55** foreign cultural institutes (FICEP)

## 4 UNESCO SITES

- Château de Versailles
- Paris, the Banks of the River Seine
- Fontainebleau Château and Park
- Medieval City of Provins

### TOP CULTURAL EVENTS (BY NUMBER OF VISITORS)

European Heritage Days*	More than 12 million visitors at a national level
Nuit blanche*	More than 1 million
LGBT Pride Parade*	500,000
Techno Parade*	300,000
Paris Plages*	230,000
Solidays	170,000
La Villette Open-Air Cinema Festival	138,000
Rock en Seine	118,000

Source: Repères de l'activité touristique 2014, CRT Paris Ile-de-France  
 \* free admission, estimate



Ile des impressionnistes © CRT Paris Ile-de-France

## SPORTS A GREAT DENSITY OF SPORT FACILITIES AND INFRASTRUCTURE (2014)

**19,000** sports clubs  
**2.3 million** Paris Region inhabitants hold a sports license  
**12** leisure resorts (**3,000** hectares)  
**5,800** tennis courts  
**430** swimming pools  
**430** equestrian centres  
**100** golf courses  
**8,000 km** of hiking paths

## SOME OF THE MOST POPULAR SPORTS EVENTS (2014)

- Paris Open, Roland-Garros (Tennis): **429,000** spectators
- Prix de l'Arc de Triomphe (Horse race): **60,000** spectators
- Alstom Open de France (Golf): **52,000** spectators
- AREVA meeting (Athletics): **50,000** spectators

## A GREEN REGION

**21%** cityscape, **28%** woodland, **50%** agricultural land and **1%** water  
**4** regional nature parks representing **18%** of the land area (218,000 ha)  
**25** Natura 2000 sites

## HEALTHCARE

**37** AP-HP hospitals (Assistance Publique - Hôpitaux de Paris) (2014)  
**Europe's top CHU** (Teaching Hospital) with AP-HP (2013)  
**92,000** health professionals at AP-HP (2014)  
**82,000** health facilities (2012)  
**280,000** jobs in health facilities (2012)  
**4,000** pharmacies (2013)  
**820** medical laboratories (2013)  
**47,500** doctors (2013)  
**13,800** pharmacists (2013)  
**8,500** dentists (2013)





## HOUSING (2011)

**5.5 million** housing units  
**30%** houses (1.5 million)  
**70%** flats (3.9 million)

PRIVATE HOUSING RENTS IN PARIS		Paris	Inner suburbs	Outer suburbs	Paris Metropolitan Area
Average surface area	in m <sup>2</sup>	50	53	59	63
Average monthly rent	in €	1109	846	790	934
	in €/m <sup>2</sup>	22.1	16.1	13.4	17.6

Source: OLAP, 2013



## SHOPPING (2013)

**18** major department stores  
 (Galeries Lafayette, Printemps, Bon Marché, BHV...)  
**154** shopping centres

**2 PARIS REGION SHOPPING CENTRES ARE AMONG EUROPE'S TOP 5 CENTRES WITH OVER 20 MILLION VISITORS EACH YEAR (ANNUAL FOOTFALL)**

Westfield Stratford (London)	48
 Les Quatre Temps (La Défense - Paris Region)	46
Bullring (Birmingham)	40
 Forum des Halles (Paris - Paris Region)	38
La Part-Dieu (Lyon)	34

Source: Sites commerciaux n° 241, Special projets, septembre 2014



## GASTRONOMY

- **Rungis International Market**, the world's leading fresh produce market
- « **Saveurs Paris Ile-de-France** » is a regional food brand created to highlight close to **600** products and **70** kinds of fruit and vegetables: Brie from Meaux, beer from the Vexin, honey and saffron from the Gâtinais, asparagus from Argenteuil, Belle de Fontenay potatoes, etc.
- **5,000** farms
- **12,500** specialists in the food trade and over
- **100** starred restaurants, including 1/3<sup>rd</sup> of France's 3-star restaurants



Ecole Grégoire Ferrandi © X. Renauld



**Please do not hesitate to send in your comments and suggestions to improve this new edition: [prkf@parisregionentreprises.org](mailto:prkf@parisregionentreprises.org)**

We extend our thanks to all of the institutions and individuals who were kind enough to send us the data used in producing this document: ADP, Advancity, APHP, ARWU, ASTech, Autolib, BNP Paribas Real Estate, Cap Digital, Campus Condorcet, CBRE, Cervia, Paris Ile-de-France CCI, Collegium Ile-de-France, CRT, Cosmetic Valley, Cushman & Wakefield, DIRIF, French Customs, Elastopole, Eurostat, eworky, Ficep, Finance Innovation, Financial Times, Fortune Magazine, Haropa - Ports de Paris, Hesam University, ICCA, Immostat, INPI, Insee Ile-de-France, La Fonderie, Medicen, Mov'eo, National Nature Heritage Inventory, Legifrance, MESR, OLAP, ORIE, OST, OTCP, Paris Tech, PSL Research University, QS, ROF, SNCF, Sorbonne Paris Cité, Sorbonne University, STIF, Systematic, Times Higher Education, Transilien, Unesco, Paris-Est University, Paris-Lumières University, Paris-Saclay University, Paris Seine University, Velib.

### Editorial Board:

Paris Region Entreprises (Florence Humbert, Alexandre Mot),  
 Paris Ile-de-France CCI (Yves Burfin, Isabelle Savelli),  
 IAU-Île-de-France (Christine Tarquis, Vincent Gollain)

### Marketing and Communication:

Frédérique de Bast, Alexandre Mot (PRE)

Maps: Pascale Guéry (IAU-Île-de-France)

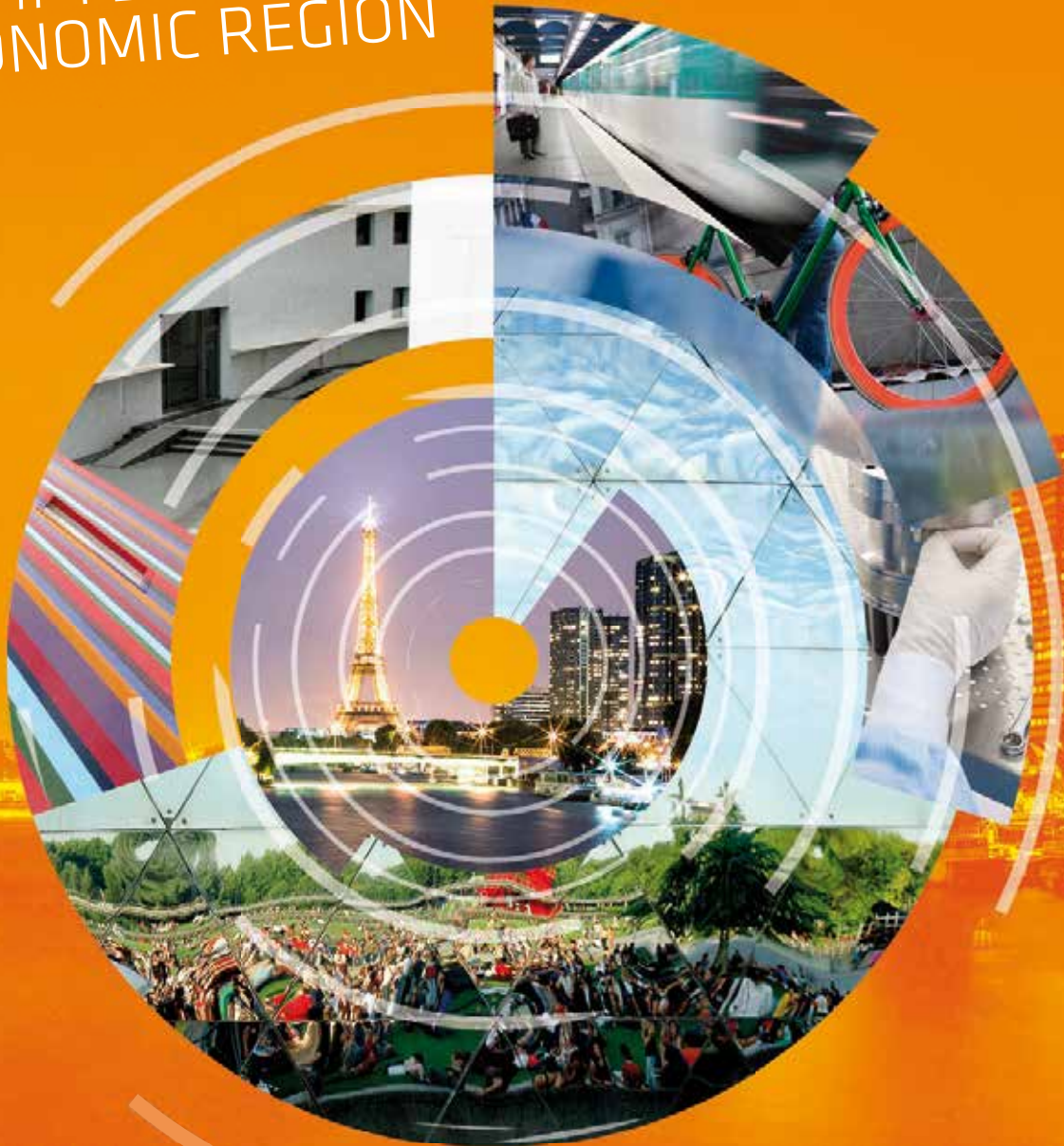
Graphics: Agnès Simonpaoli

Translation: Activation

© Paris Ile-de-France CCI - IAU-Île-de-France - Paris Region Entreprises  
 March 2015

# WELCOME

## TO #1 EUROPEAN ECONOMIC REGION



*For successful business setups,  
think Paris Region Entreprises*

[www.paris-region.com](http://www.paris-region.com)



**PARIS  
REGION  
ENTREPRISES**

# FOUNDATION FOR BETTER LIVING CITIES

## TERRITORIES NEED BIG IDEAS

The Paris Region Planning and Development Agency (IAU Île-de-France) is dedicated to territorial entities, offering analysis, studies and decision-making tools.

### MORE THAN 160 EXPERTS

Urban planning and land management, environment, transport and mobility, economy, housing, real estate, way of life, health, sports, etc.

### ENABLING THE DEVELOPMENT OF THE CAPITAL'S REGION: PARIS ÎLE-DE-FRANCE REGION

The IAU focuses on the regional planning and economic development of Paris Region: territorial dynamics, sustainability, clusters. We participate in the elaboration of regional master plans: «Île-de-France 2030», urban development, housing, economic development...

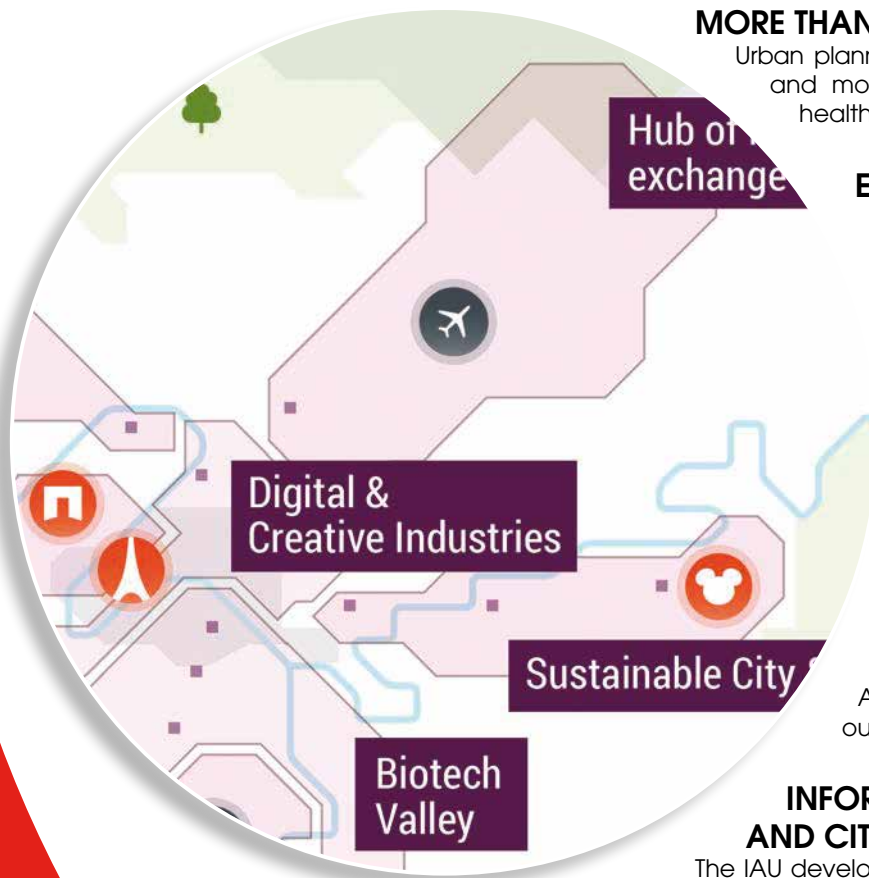
### CONCEIVING TERRITORIAL DYNAMICS

Through innovative ideas, the IAU helps local authorities and companies to take the right decisions. Our Agency has already advised numerous clients located all around the world: Africa, Latin America, Middle-East, Asia. We also carry out benchmarks on global regions and cities.

### INFORMING DECISION-MAKERS AND CITIZENS

The IAU develops digital and interactive tools on Île-de-France. We also actively contribute to the development of **open-data**. For example:

**Paris Region Map**: the economic map of Île-de-France; **Wikimap' project**: a collaborative map of all spatial planning projects; **Land Use mode** (Mos).





# Paris Ile-de-France Regional Chamber of Commerce and Industry

## KEY FEATURES

- France's and Europe's leading CCI
- Influential before public authorities
- Business-oriented services
- Officially recognized and highly demanded courses
- Key player within the Greater Paris's appeal

## INTERNATIONAL INITIATIVES

- Support SME/VSE on a long-term basis and during the various steps needed to take projects to an international level
- Welcoming foreign delegations
- Issuing and promoting international formalities
- 750 new exporters
- 200 seminars; 6,000 businesses attendees
- 35 to 45 missions abroad
- 5 to 7 French pavilions
- 300,000 export documents and 7,500 ATA carnets
- Business consultants available within the Region and internationally
- 6 branches abroad (Beijing, Shanghai, Moscow, Brussels, Bombay, Sao Paulo)
- A unique international network



## THE PARIS ILE-DE-FRANCE CCI IS DEVELOPING A CHANNEL OF EXCELLENCE IN THE FIELD OF TRADE SHOWS AND CONVENTIONS. IT OWNS 50% OF:

- VIPARIS, a world leader in site management with 10 exhibition and convention centers, with an area of over 610,000 m<sup>2</sup> hosting more than 1,000 events and 11 million visitors every year
- COMEXPOSIUM, a European leader in event's organization with about 35,000 exhibitors and 3 million visitors covering about 140 events

## THE PARIS ILE-DE-FRANCE CCI PROVIDES SUPPORT TO BUSINESSES AT EVERY STAGE OF THEIR DEVELOPMENT, FROM THE CREATION TO THE HANDING OVER OF THE BUSINESS

- Supported over 29,000 projects
- Supported 9,000 businesses abroad and 1,700 business takeovers and sales
- Advised more than 10,000 retailers
- Issued 180,000 formalities

## THE PARIS ILE-DE-FRANCE CCI TRAINS EMPLOYEES AND FUTURE LEADERS

- 25 schools (including HEC Paris, ESCP Europe, Essec, Gobelins, Ferrandi, Isipca, etc.)
- 461 courses offered
- 31,800 students, including 16,700 apprentices
- 43,000 adults enrolled in executive education
- A job integration rate of 87%, 7 months after graduation
- A wide range of examination for French Business language and an evaluation test (TEF)

## THE PARIS ILE-DE-FRANCE CCI REPRESENTS THE INTERESTS OF BUSINESSES IN IMPROVING THE COMPETITIVENESS OF FRANCE'S ECONOMY (TAX POLICY, INNOVATION, INFRASTRUCTURE, LABOUR COSTS, ETC.)

- 50 reports or position papers presented to the authorities
- 130 experts in economics, law, taxation and land development

[www.international.cci-paris-idf.fr](http://www.international.cci-paris-idf.fr)

**0820 012 112**  
0,12 €/minute

