

RESULTS OF THE SURVEY ON INCUBATORS AND ACCELERATORS

Between October 2024 and January 2025, the Institut Paris Region, the Paris Region and Choose Paris Region conducted an online survey of incubators and accelerators in Paris Region. A total of 80 responses were received: 50 came from members of the regional network of Île-de-France incubators and accelerators (response rate: 50%) and 30 from organizations outside the network (response rate: 34%). This survey was supplemented by open-ended interviews. The sample structure reflects that of the incubators as a whole across several criteria (location, sector of activity and type of organization).

Support for international start-ups

48% of incubators and accelerators host international start-ups.

One-third have target countries, most often in Europe.

Specific features of support programs

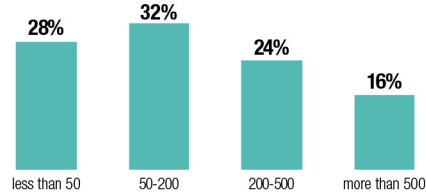


Services offered

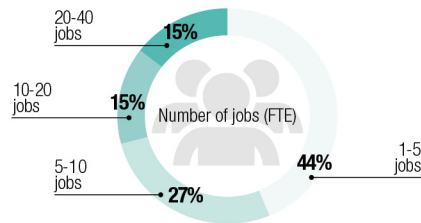
- Administrative procedures (legal, tax and banking)
- Recruitment (profiles, employment contracts, HR, etc.)
- Commercial property and land
- Support for international relocation (visas, education, studies, social security, accommodation, etc.)

Scope: members of the regional network and non-members

Applications received (annual average)



Jobs dedicated to supporting start-ups



Sources of income and funding

- 40%** face funding difficulties.
- 67%** are concerned about their future funding, fearing a reduction in public grants and other external funding.

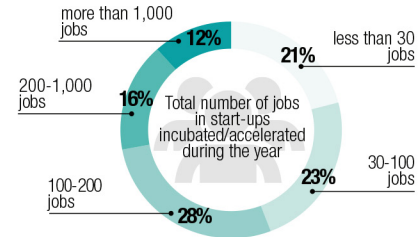
One-third report three out of five possible sources of income.



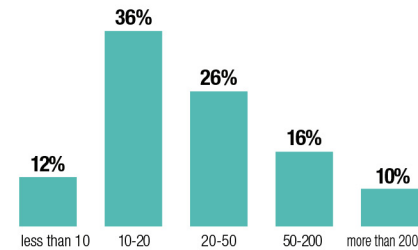
Proportion of total turnover from services offered



Jobs in start-ups



Start-ups supported (annual average)

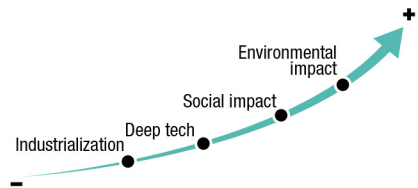


Start-up fundraising

Amount of funding raised by incubated start-ups in 2023 (k€)



Priority areas for supported start-ups



Scope: members of the regional network

