

Paris Region

Facts & Figures 2022





Welcome to Paris Region

Europe's Leading Business and Innovation Powerhouse

Paris Region Facts and Figures 2022 lays out a panorama of the Region's economic dynamism and social life, positioning it among the leading regions in Europe and worldwide.

The figures take into account the impact of the COVID-19 health crisis for some data.*

With its fundamental key indicators, the brochure, "Paris Region Facts and Figures 2022" is a decision making tool for companies and economic stakeholders.

This brochure is a useful resource to economic and political leaders of the Region and to all who wish to have a global vision of this dynamic regional economy.

Paris Region Facts and Figures 2022 is a collaborative publication produced by Choose Paris Region, L'Institut Paris Region, and the Paris Île-de-France Regional Chamber of Commerce and Industry.

*L'Institut Paris Region has produced a note on economic transformations in Paris Region, September 2021





Anticipated Olympic installation between the Eiffel Tower and the Trocadéro ©Paris 2024-ph.guignard@air-images.net-Populous-Luxigon

Paris Region, A Vibrant, Innovative and Sustainable Region

A Dynamic and Fast-growing Region

A cultural and intellectual metropolis, a scientific and urban laboratory, Paris Region is France's economic powerhouse, accounting for **30.7%** of the national GDP, **23%** of France's workforce, and **40.5%** of the country's researchers. **53.4%** of the residents are under the age of 40. This young and steadily growing population is not only attracted by the Region's economic opportunities but also by the quality of life offered.

A Thriving Business and Research Community

The highest GDP in the EU28 in billions of euros. A vibrant exchange between Europe's highest concentration of Fortune Global 500 corporations, corporate headquarters, SMEs, trailblazing start-ups, and world-class competitiveness clusters. **#1** worldwide destination for international meetings. The leader in Europe for R&D talent and spending

A Strong Know-How in Services and Industry

Paris Region is renowned worldwide for its strong expertise and know-how in key market areas, both in services and industry. As a world leader in financial services, aerospace & defense and a pioneer in new mobility, new space, smart building, cleantech, and green energy, Paris Region is also recognized on the world stage for the quality of its research in health & life sciences. Moreover, Paris Region is a leader in IT, digital transformation, creative industries, logistics, agrifood, cosmetics, and many more fields.

A Massive Consumer Marketplace

Access to **513 million** European consumers, **12.3 million** inhabitants, usually around **50 million** tourists and **8 million** visitors in the Region's main conference and exhibition centers.

A Breeding Ground for Talents

The Region offers access to world-class academic institutions. Companies will find a pool of international and highly skilled talents ready to help expand their business: **6.5 million** jobs, **35%** of all French executives. Europe's largest concentration of students: **734,260** students (**26.4%** of students in France). World-class engineers, researchers, scientists... Internationally recognized technical and scientific skills...

Very Competitive Real Estate and Logistics Solutions

Paris Region is a constellation of diverse, specialized districts that make it a highly attractive location for a range of offices, industries, logistics, research areas, and lifestyles at very competitive costs.

Table of contents

Welcome to Paris Region	5
Overview	6
Population	10
Economy and Business	12
Employment	18
Education	20
R&D and Innovation	24
Digital Infrastructure	27
Real Estate	28
Transport and Mobility	30
Logistics	32
Meetings and Exhibitions	34
Tourism and Quality of life	36

World-Class Infrastructure

3 international airports, high-speed rail, an ever-expanding urban subway system thanks to the Grand Paris Express project, the largest urban renewal project in Europe, new modes of mobility, and an excellent broadband communication network.

An Outstanding Lifestyle

There's a reason why the Paris Region is the **#1** destination on the planet. With usually around **50 million** visitors each year, the area is synonymous with culture, gastronomy, history and "art de vivre". The Region is also committed to improving the environment, preserving biodiversity, and reducing carbon emissions.

Smart and Sustainable Region

Paris Region is deeply committed to promoting sustainability through business, environmentally responsible urban planning, and through projects with a positive social impact. Home to **18%** of France's population on **2%** of the national territory, Paris Region strives to provide its citizens with a greener environment that incorporates carbon-free urban planning.

Urban Development and Major Events

The prospect of the 2024 Olympic and Paralympic Games provides an exceptional opportunity for foreign companies and investors to try out their solutions in Paris Region.

The Grand Paris Express

The Grand Paris Express Project is changing the face of Paris Region by doubling the size of the regional super-subway network with **200 km** of new tracks and **68** new transit stations by 2030. It will better connect Paris to urban and business centers, international airports, and high-speed train stations.

Paris 2024

Paris will also be hosting the 2024 Olympic and Paralympic Games, which will generate major infrastructure and construction projects.

A World Leading Economic, Innovative and Sustainable Region

Accounting for **18.3%** of the French population and **30.7%** of the national wealth, Paris Region offers access to world-class academic institutions, business opportunities and a rich quality of life, but it's also the buzz and atmosphere generated by its great cultural melting pot that make it such an attractive region.

Paris Region in the European Union as of 01.01.2022



European Union member states Non European Union countries

*UK has left the EU28 from 01.01.2021

Paris Region is part of:
- The European Union
- The Schengen area
- The Eurozone

An International Region

1.8 million foreigners live in the Region, making up **14.5%** of the population
2018

96,400 international students in higher education, including **80,700** in Paris Region's public universities
2019-20

7,500 international PhD students
2019-2020

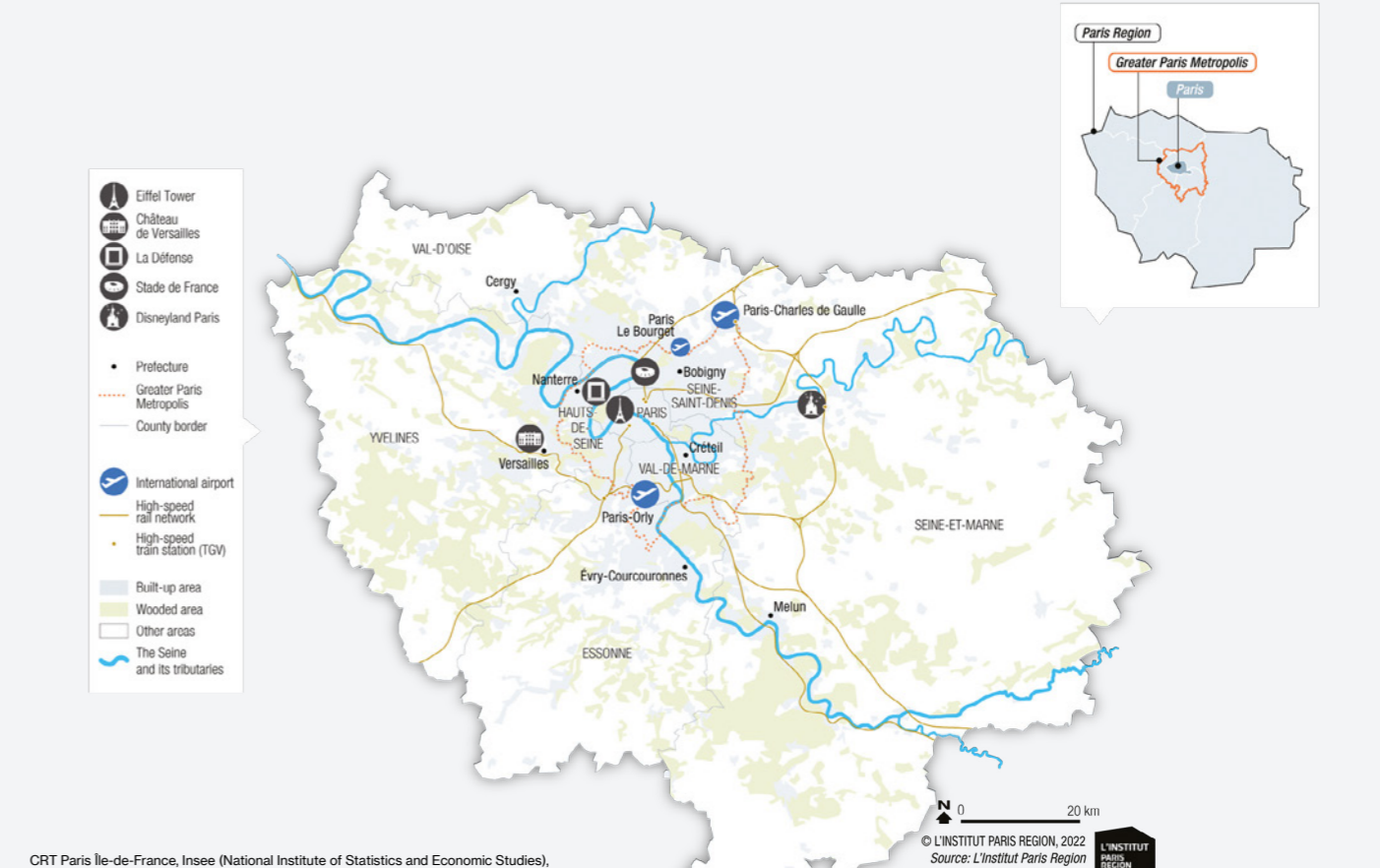
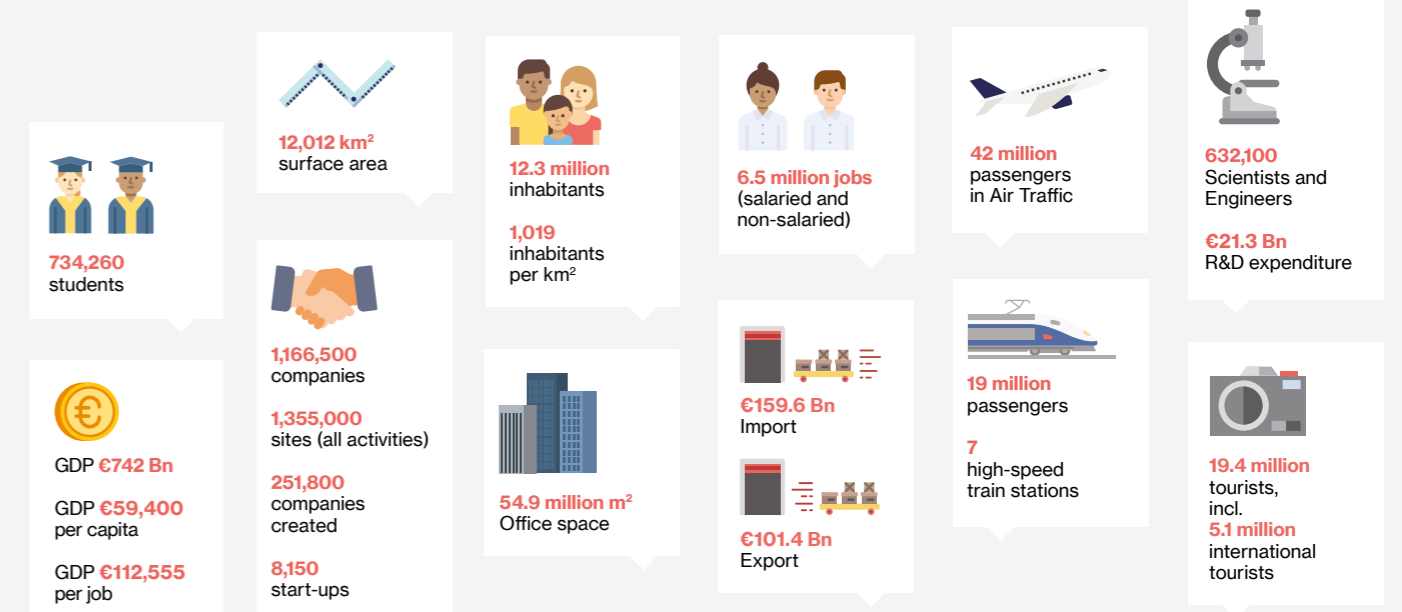
5,800 international researchers
2019

5.1 million international tourists (usually over **22 millions**)
2020

16,560 foreign sites
573,092 jobs,
1 out of 6 jobs in Paris Region is in a foreign company (**16.2%**)
INSEE 2021, data 2018

336 foreign companies
10,800 jobs created by foreign companies
2020

Paris Region in Figures



CRT Paris Île-de-France, Insee (National Institute of Statistics and Economic Studies), European Startups, Eurostat, French Customs, ORIE (Regional Observatory of Commercial Real Estate in Paris Region), Ministry of Education, Higher Education and Research, Paris Aéroports, SNCF (National Railways of France).
Data: latest year available.

Paris Region's Position in International Rankings

Paris Region is one of the most distinguished regions in the world according to different rankings on attractiveness, foreign direct investments, talents, real estate, cost and quality of life.

Recent international studies place the Region within the top global areas in the world in terms of Human Capital and Talent, Economic Activity, Attractiveness, Quality of Life, Cultural Experience, Information Exchange, R&D Innovation, Tourism and more.



© Hoops Factory, Basket Hall in aubervilliers © J.-M. Sicot, L'Institut Paris Region

Global Attractiveness

Global Cities Index 2020-21 on economic performances

Paris holds firm across all dimensions. It maintains its top spot in information exchange and sees a marked improvement in its human capital performance.

	2020	2021
New York	1	1
London	2	2
Paris	3	3
Tokyo	4	4
Los Angeles	7	5
Beijing	5	6
Hong Kong	6	7
Chicago	8	8
Singapore	9	9
Shanghai	12	10

A.T. Kearney

Global Cities Outlook 2020 - 21 on the potential of a city to attract and retain global capital, people, and ideas in coming years.

Paris, **2nd** in cultural interaction, livability and accessibility.

	2020	2021
London	1	1
Paris	5	2
Munich	6	3
Abu Dhabi	7	4
Dublin	10	5
Stockholm	8	6
Tokyo	4	7
Toronto	2	8
Sydney	12	9
Singapore	3	10

A.T. Kearney

Global Power City Index 2020 - 21

World's most attractive cities according to their ability to attract people, capital, and enterprises from around the world. Paris, **2nd** in cultural interaction, livability and accessibility.

	2020	2021
London	1	1
New York	2	2
Tokyo	3	3
Paris	4	4
Singapore	5	5
Amsterdam	6	6
Berlin	6	7
Seoul	8	8
Madrid	13	9
Shanghai	10	10

Mori Memorial's Foundation's Institute for Urban Strategies

Global Cities Index 2020

In one year, Paris has moved up from **14th** to **4th** place in the ranking that identifies cities combining economic dynamism, excellent universities, forward-thinking environmental policies and excellent transport infrastructure.

	2019	2020
London	2	1
San Francisco	6	2
Boston	4	3
Paris	14	4
New York	9	5
Hong Kong	3	6
Toronto	16	7
San Jose	10	8
Seattle	5	9
Melbourne	12	10

Schroders

Foreign Direct Investments

Global Cities Investment Monitor 2021

Paris Region is a **Top Global Region for International Investments**

- Paris Region, **#2** most attractive global cities in the world in the market share of global investments
- Ranked as the world's leading global region, business leaders anticipate the best performance over the next three years

- Paris Region, **#1 worldwide** for investments in Life Sciences, driven by the attractiveness of Saclay, Genopole and Biocitech
- Paris Region, **#1 worldwide** for investments in R&D centers

- Paris Region has overtaken London and is now **#2** for investments in the financial services sector

KPMG – Paris Ile-de-France Capitale Economique, OpinionWay, Choose Paris Region, 2021

fDi European Regions of the Future 2020 - 21

#1

Paris Region, European Region of the Future

fDi Intelligence

Cost and Quality of Life

Cost of Living Survey 2021

Paris, ranked **#33**, is less expensive than these global cities:

- #1 Ashgabat
- #2 Hong-Kong
- #3 Beirut
- #4 Tokyo
- #5 Zurich
- #6 Shanghai
- #7 Singapore
- #8 Geneva
- #9 Beijing
- #10 Bern
- #16 Copenhagen
- #18 London

Mercer 2021 (Selection of cities)

Cost of Living, Le Coût de l'Expat

Paris is

- 19%-22% less expensive than Geneva, Zurich, London, New York, San Francisco
- Equivalent to Amsterdam, Los Angeles, Munich, Shanghai

Le coût de l'Expat, 25/03/2021

Cost of Living, ECA International

- Hong-Kong, Tokyo, Geneva, New York, Central London, Zurich, Tel Aviv, Seoul, Shanghai and Guangzhou are the most expensive cities in the world
- Paris is less expensive than the above cities, as well as Copenhagen, Bern, Oslo, Stockholm in Europe

ECA International, 2021

Quality of Living Survey 2019

Internationally renowned, the quality of life in Paris is ranked **#39** (out of 231 cities), ahead of major global cities such as:

- #41 Milan / London
- #43 Barcelona
- #44 New York
- #46 Madrid
- #49 Tokyo / Chicago
- #53 Washington
- #56 Rome

Mercer 2019 (Selection of cities)

Real Estate

2020 Attractiveness of Global Business Districts Report

Paris La Défense, 4th largest business district in the world

Paris La Défense holds the fourth position thanks to 49% of its metropolitan population being highly skilled, the density of the transport infrastructure in the Paris region and a high concentration of international headquarters (Fortune 500, Société des Bourses Françaises (SBF) 120 companies, and large consulting firms).

- #1 London, The City
- #2 New York, Midtown
- #3 Tokyo, Marunouchi
- #4 Paris, La Défense
- #5 London, Canary Wharf
- #6 New York, Financial District
- #7 Beijing, CBD
- #8 Seoul, Gangnam
- #9 Singapore, Downtown Core
- #10 Chicago, The Loop

EY-UJI Index

Emerging Trends in Real Estate, Europe 2022

Paris, **#3** for overall real estate prospects in 2022

"Paris Region has many advantages: the upcoming Olympic Games, exceptional transport networks, the largest office market in continental Europe, low rents with solid growth potential, and the largest number of head offices in Europe".

Emerging Trends in Real Estate, Europe		
	2021 (data 2020)	2022 (data 2021)
1	Berlin	London
2	London	Berlin
3	Paris	Paris
4	Frankfurt	Frankfurt
5	Amsterdam	Munich
6	Hamburg	Madrid
7	Munich	Amsterdam
8	Madrid	Hamburg
9	Milan	Barcelona
10	Vienna	Brussels

PWC, 2022

Talents

Global Talent Competitiveness Index 2020

- #1 New York
- #2 London
- #3 Singapore
- #4 San Francisco
- #5 Boston
- #6 Hong Kong
- **#7 Paris**
- #8 Tokyo
- #9 Los Angeles
- #10 Munich

INSEAD, Adecco, Google, 2020

Financial Times Education Rankings 2021

HEC Paris Best EMBA

Executive MBA program

Best European Business school

Tourism and Meetings

Meetings organized in the World, ICCA

- **#1 Paris - the world's leading destination in number of meetings organized (237)**
- #2 Lisbon (190)
- #3 Berlin (170)
- #4 Barcelona (156)
- #5 Madrid (154)

ICCA, International Congress and Convention Association, data 2019

R&D, Tech and Innovation

Global Innovation Index 2021

Paris, **#1** in Europe and the world's **#10** largest science and technology clusters

Cornell University, INSEAD, WIPO, 2021

Innovation Geographies 2022

- Paris:
- **#1** innovative city in Europe
 - **#7** in the world
- Ahead of London (#9), Berlin (#18), Munich (#21) and Helsinki (#24) in Europe.

Paris stands out for its:

- High number of international projects
- High volume of start-ups
- Above-average R&D spending as a percentage of GDP
- Large number of international patents filed
- High level of patenting activity, particularly in the private sector
- Areas of excellence, which include transportation equipment, pharmaceuticals and biotechnology

JLL, 2020 / 2022

Innovation Cities Top 100 Index 2021

Paris, highest ranked EU startup ecosystem and the world's **#10** best city for innovation

2thinknow, 2021

Startup Blink 2021

Paris Region Innovation: **11th** startup ecosystem in the world

StartupBlink, 2021

Tech Cities of the Future 2021

Paris, Europe's **#2** tech city out of 76 cities

- #1 London
- **#2 Paris**
- #3 Dublin
- #4 Berlin
- #5 Amsterdam
- #6 Madrid
- #7 Barcelona
- #8 Munich
- #9 Stockholm
- #10 Bucharest

Criteria: Economic Potential, Innovation and Attractiveness, FDI Performance, Cost Effectiveness and Start-up Environment...

fDi Intelligence and the TNW (The Next Web)

A Young, Cosmopolitan and Talented Population

Paris Region, the most populated region in France and in the EU28, shines on the international scene as a vibrant region attracting a young and cosmopolitan crowd. The buzz and atmosphere generated by its cultural diversity make it the diverse region it is today. Students, entrepreneurs, researchers, and investors find themselves flocking to Paris Region daily to participate in this energetic atmosphere.



© Raphaël Hinojosa

Europe's Most Populous Region

12.3 M
inhabitants

18.3%
of France's population

Insee 09/2021, data 2020

2.75% of the European Union's population

Eurostat 12/2021, data 2020

- Europe's most populous region ahead of Lombardy, Greater London, Andalusia, Auvergne-Rhône-Alpes, and Catalonia.
- Higher to that of Austria, Belgium, Greece, Hungary, Portugal, and Sweden...

Eurostat 06/2021, data 2020, NUTS 2

Over 100,000 inhabitants in 5 towns in Paris Region:

- Paris
- Boulogne-Billancourt
- Saint-Denis
- Montreuil
- Argenteuil

Insee 12/2021, data 2019

Paris Region: the Highest Natural Balance in the European Union

The region's natural surplus now exceeds that of any country in the EU.

+56,000 additional inhabitants of Paris Region on average each year from 2007 to 2018

Over 250,000
new inhabitants by 2025

Between 2013 and 2019, the population of Paris Region has grown by 0.4% per year – the same rate increase as all of France.

Insee 01/2021

A Young, Dynamic Population

Paris Region contributes the most to the population growth in metropolitan France and is the French region where people live the longest.

25,6% of Paris Region's population is under 19, and 53,4% under 40

Age	Paris Region		France	
	Total	Age group / Total Paris Region in %	Total	Age group / Total France in %
0-19	3,156,376	25.6	15,429,442	23.7
20-39	3,430,205	27.9	15,309,022	23.5
40-59	3,205,324	26.0	16,832,586	25.8
60-74	1,677,536	13.6	11,383,84	17.4
Over 75	854,820	6.9	6,290,954	9.6
Total	12,324,261	100%	65,249,843	100%

Insee, 2021, data 2021

A Cosmopolitan Population

Paris Region is a place where people from all over the world live, study, work, and visit.

1.8 M
foreign people

14.5%
of the Region's population is foreign

Africa	845,852	Europe	538,885
Algeria	213,653	Portugal	226,699
Morocco	150,952	Romania	55,103
Tunisia	113,152	Italy	52,933
Senegal	83,728	Spain	39,172
Other nationalities from Africa	284,357	Poland	25,569
		Germany	16,283
		Belgium	13,020
		Other nationalities from Europe (incl. UK)	110,106

Insee 06/2021, data 2018

Nativity and Mortality

- 168,467 births
- 90,566 deaths
- 13.7‰ birth rate (France: 10.9‰)

Insee 2021, data 2020

Life Expectancy

- Women's life expectancy • 84.7 years (France: 85.2)
- Men's life expectancy • 79.5 years (France: 79.2)

Insee 04/2021, data 2020

Fertility Rate by Region

With 1.93 children per woman, Paris Region is in the top 10 of the 282 most fertile European regions

- Brussels: 1.71
- Greater London*: 1.63
- Upper Bavaria: 1.52
- Amsterdam: 1.46
- Berlin: 1.41
- Lombardy: 1.33
- Catalonia: 1.29

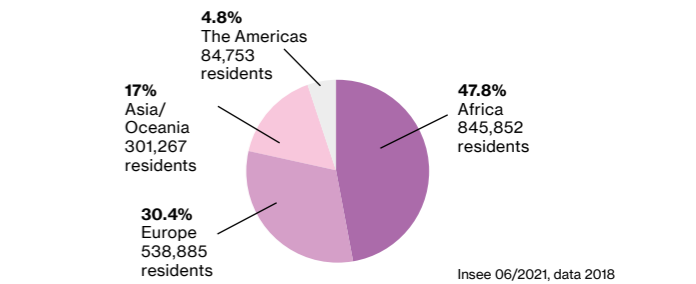
Eurostat 01/2022, data 2019, *2018

Top 5 EU28 regions counting young people between 25 and 29 years old

Paris Region (FR)	874,883
Greater London (UK)*	788,465
Lombardy (IT)	506,923
Andalusia (ES)	480,410
Catalonia (ES)	426,255

Eurostat 06/2021, data 2020, *2019

Distribution of the Foreign Population in Paris Region



Insee 06/2021, data 2018

Region	Residents
Africa	845,852
Europe	538,885
Asia and Oceania	301,267
The Americas	84,753
Turkey	69,991
China	69,104
Vietnam	57,295
Cambodia	41,479
Lebanon	17,446
Sri Lanka	16,262
Other nationalities from Asia	31,816
Oceania	1,874
Haiti	26,540
Brazil	18,630
USA	13,797
Colombia	12,404
Canada	8,403
Other nationalities from the Americas	4,403

Europe's Leading Business Region

The highest GDP and most Fortune 500 company headquarters in Europe, a buzzing startup scene and a thriving research community are a few of Paris Region's core assets. Home to 1.1 million businesses and to the widest real estate market in Europe, Paris Region benefits from a highly attractive business environment.



Urban Center Carré Sénart © Techniflight. Multiple Architects

A Dynamic and Fast-Growing Region

Paris Region has by far the largest economy generating **30.7%** of French national wealth and **5.3%** of EU GDP, equivalent to that of the Netherlands, and higher than that of Poland, Belgium, Sweden, or Austria.

Paris Region's economic dynamism benefits from its position at the heart of the world's economy.

Paris Region is home to a truly diversified economy with industry leaders, innovative start-ups, and all key stakeholders in between.

Access to over **513 million** European consumers

Europe's highest concentration of Fortune 500 corporations

GDP
€742 Bn

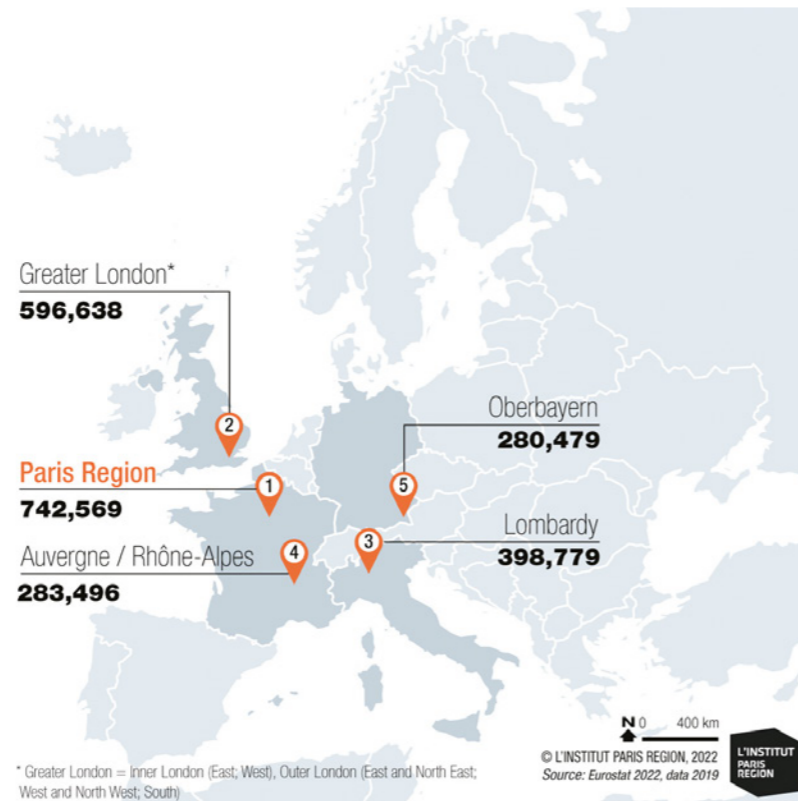
GDP per job
€112,555
INSEE 2021, data 2018

GDP per capita
€59,400
INSEE 12/2021, data 2018

30.7%
of France's GDP

5.3%
of EU27 GDP

Top 5 European Regions for GDP (million euros in 2019)



A Business Powerhouse

The primary strength of Paris Region's economy is its concentration of jobs, corporate headquarters, small and medium-sized businesses, and start-ups.

1,166,577
companies

INSEE 2020, data 2018, Commercial activities, excluding agriculture

251,781 companies created in 2020
INSEE, 12/2021, data 2020

1,354,704 sites
INSEE 12/2021, data 2019

All of France's very large companies (> 1,500 employees each) and many foreign companies are located in the Region.

Start-ups

Along with the multitude of incentives and support schemes in place to assist businesses, Paris Region is a desirable proposition for European entrepreneurs and tech start-ups.

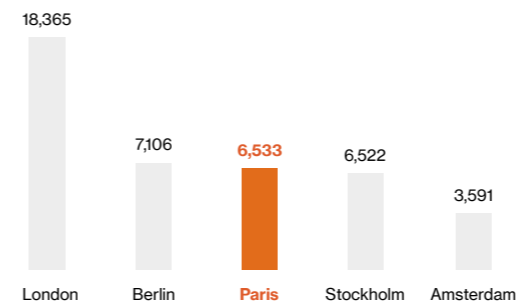
8,145
start-ups

Top 10 cities for start-ups / unicorns

	Startups	Unicorns
London	18,000	75
Paris	8,145	26
Berlin	4,285	27
Amsterdam	2,996	14
Madrid	2,574	5
Barcelona	2,408	5
Dublin	2,208	6
Munich	2,026	12
Helsinki	1,493	3
Frankfurt	548	0

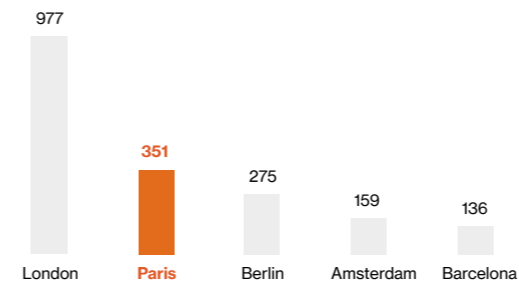
European Startups, 01/2022

Top 5 European hubs by capital invested (\$M), ranking based on 2021 (in US\$)



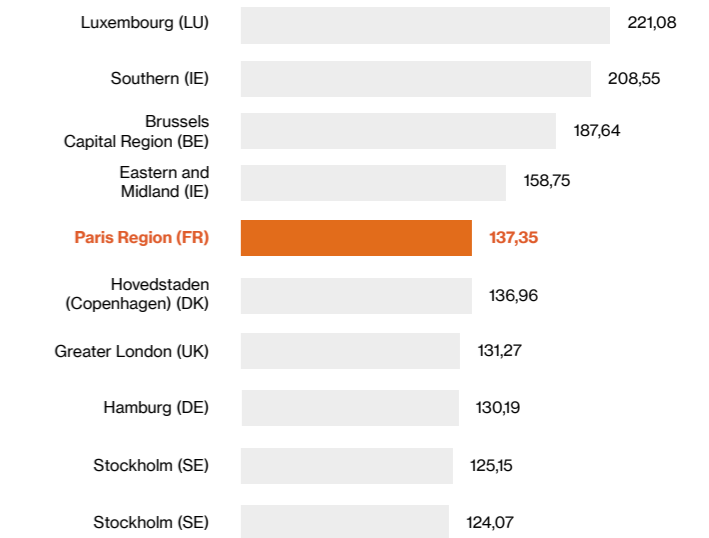
State of European Tech 2021, Atomico

Top 5 European Hubs by Number of Deals in 2021



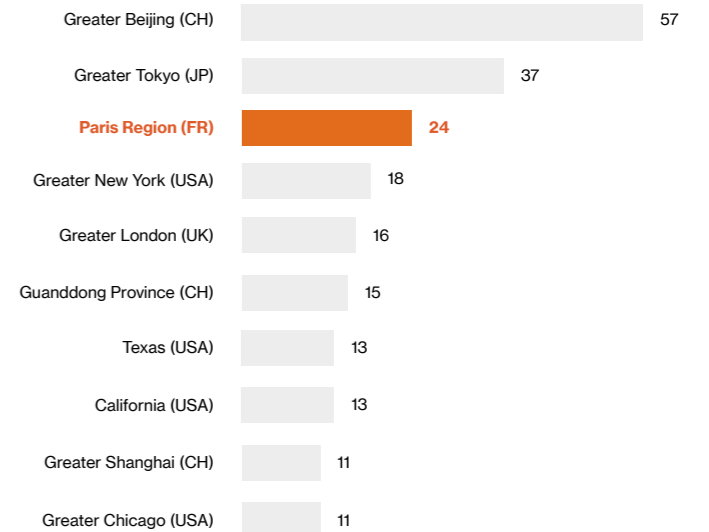
State of European Tech 2021, Atomico

Paris Region, the EU's 5th Leading Region for Labor Productivity



Apparent Labor Productivity - Source: Eurostat GDP in million euros 2018 (NUTS 2) divided by total number employed 15 years old and over (2019), Greater London= Inner + Outer London

Paris Region, Europe's Highest Concentration of Fortune 500 Global Corporate Headquarters



Fortune Magazine, Global 500, July 2021
Ranking by metropolitan regions. Estimates Choose Paris Region

Top 10 Corporate Headquarters in Paris Region - Fortune Global 500

Company	Revenue in million dollars	Total workforce
AXA	128,011	96,595
TotalEnergies	119,704	105,476
Crédit Agricole	82,958	73,817
Carrefour	82,211	322,164
BNP Paribas	81,632	193,319
Electricité de France	78,903	161,203
ENGIE	63,525	172,703
Société Générale	52,068	126,391
Christian Dior	50,878	139,409
Vinci	50,270	217,731

Fortune Magazine, Global 500, July 2021

A Strong Expertise in Key Market Areas

In Both Services and Industry

Paris Region's extremely diverse economic landscape caters to all types of businesses, especially those which operate in the Region's most innovative industries.

Renowned worldwide, Paris Region is home to a strong expertise and know-how in both services and industry.

As a world leader in financial services, aerospace and defense, and a pioneer in new mobility, new space, smart city, cleantech and green energy, the Region is also recognized on the world stage for the quality of its research in health and life sciences, and is also a leader in IT, digital transformation, creative industries, logistics, agri-food, cosmetics and many more fields.



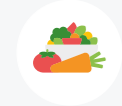
Aerospace and Defense

Airbus Group, Dassault Aviation, Safran, ArianeSpace, European Space Agency, Alcatel-Lucent, Zodiac...



Commerce / Retail

Amazon, Bon Marché Rive Gauche, Carrefour, Cora, FNAC, Galeries Lafayette, H&M, Ikea, Marionnaud, Metro, Printemps, Uniqlo, Zara...



Food Industry / FoodTech

Danone, Finatis, Kraft Foods, Lactalis, Nestlé, Pernod Ricard, Agrana Fruit France, Coca-Cola, Grands Moulins de Paris, William Saurin, ...
Agriconomie, Innovorder, Pazzi, Swile, Wynd, Ynsect...
DNA, Rungis International Market



Healthcare and Life Sciences

AstraZeneca, Bristol-Myers Squibb, GlaxoSmithKline, Guerbet, Johnson and Johnson, Lilly, Merck, Pfizer, Roche, Sanofi, Novartis...



Fashion, Design, Luxury Goods

Cartier, Chanel, Hermes, Christian Louboutin, Kering (Gucci, Yves Saint-Laurent), LVMH (Louis Vuitton, Christian Dior, Guerlain...), L'Oréal...



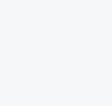
IT and Digital Economy

Apple, Altice France, Atos, Cisco, Dassault Systèmes, Free, Fujitsu, Google, Horiba, Huawei, IBM, Meta (Facebook), Microsoft, Motorola, Nokia France, Oracle, Orange, Philips, Safran Electronics and Defense, SAP, Siemens, Sony, Thales, Vivendi, ZTE...



Cleantech, Energy, Smart City

Air Liquide, Areva, EDF, ENGIE, Schneider Electric, Enedis, RTE...
Siemens, Suez, TotalEnergies, Veolia...
Bouygues Energies & Services, Eiffage, GA Smart Building, Vinci...



Business Services

Accenture, Cap Gemini, EY, Gide Loyrette Nouel, KPMG...



Financial Services, Insurance

Bank of America, Barclays, BNP Paribas, BPCE Group, CityBank, CM-CIC Group, Crédit Agricole, European Bank Authority, Euronext Paris, JP Morgan, HSBC, La Banque Postale, Morgan Stanley, Société Générale, Axa, Allianz, CNP Assurance, Generali...



M.I.C.E.*

Comexposium, RX France (Reed Expositions France et Reed Midem), Viparis... Disneyland® Paris...

*Meetings, Incentives, Conventions, Exhibitions



Tourism, Hotels, Catering

Accor, Club Med, Elior Group, Louvre Hotels Group, Lucien Barrière Group, Marriott International, Pierre & Vacances-Center Parcs Group, Sodexo ...

Paris Region, Cradle of Industry

The Region's industrial fabric includes leading-edge sectors such as the automobile, aeronautics, printing, electronics, pharmaceuticals and food processing industries.

These economic activities shape the Paris Region's landscape, from the Seine Valley (automobile), La Défense (business), Saclay (science), and La Plaine-Saint-Denis (film), to Rungis international market and the port of Gennevilliers (both dedicated to logistics).

Paris Region, at the Heart of World Trade (2021)

€159.6 Bn
26.9% of France's imports

€101.4 Bn
21.1% of France's exports

The **top 3** most exported products are indicative of the specialization of Paris Region industries:

- Aerospace and Defense
- Fashion
- Automotive

Main Imported Products

- Automotive manufacturing products: **€19.4 Bn, 12.1%**
- Natural Hydrocarbons: **€10.2 Bn, 6.4%**
- Pharmaceutical products: **€9.8 Bn, 6.2%**

Main Exported Products

- Space and aeronautics manufacturing products: **€10.1 Bn, 10.0%**
- Leather, Luggage, shoes: **€9.9 Bn, 8.2%**
- Automotive manufacturing products: **€8.3 Bn, 8.2%**

French Customs, 2021



Safran © Cyril Abad - CAPA Pictures

Paris Region's Leading Business Partners (2021)

Top 10 suppliers			Top 10 customers		
Imports			Exports		
Country	Value (€ billion)	%	Country	Value (€ billion)	%
China	25.9	16.2	Germany	13.0	12.8
Germany	17.0	10.6	United States	11.9	11.7
Belgium	15.7	9.8	United Kingdom	7.0	6.9
United States	11.6	7.2	Italy	6.9	6.9
Spain	10.6	6.6	China	6.9	6.8
Italy	10.4	6.5	Spain	6.3	6.2
Netherlands	6.7	4.2	Belgium	6.2	6.1
United Kingdom	5.6	3.5	Switzerland	5.0	5.0
Unknown countries	4.0	2.5	Hong Kong	2.7	2.6
Switzerland	3.8	2.4	Netherlands	2.4	2.4
Global Total Paris Region*	159.6		Global Total Paris Region*	101.4	

French Customs, 2021, *including other countries

The main supplier countries are the major powers world's economies (China, USA), as well as the nearby countries.

For 11 years, Germany and the United States have been Paris Region's main export partners.

An Attractive Region for Foreign Companies (2018)

Paris Region is the top French region in terms of hosting foreign companies and accounts for a third of all new business creations in France.

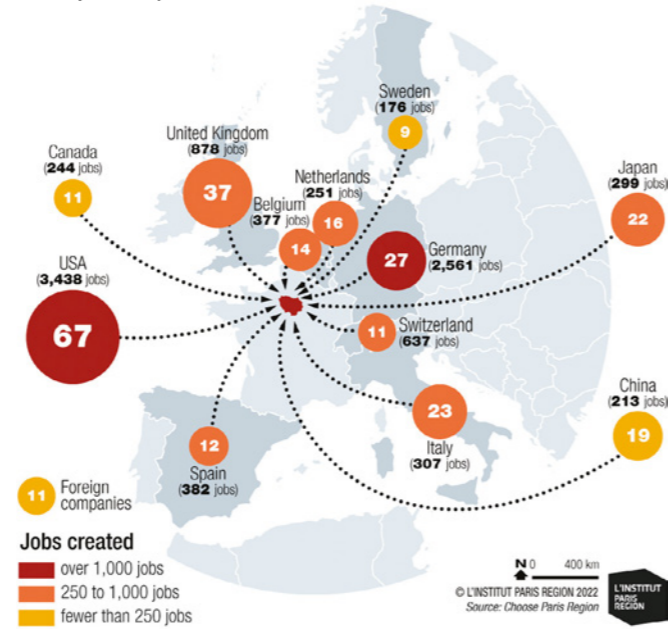
Europe's #1 Region for Major Foreign Companies

16,560
Sites Depending on a Foreign Company

573,000
jobs, 1 out of 6 in Paris Region (16.2%)

INSEE 2021, data 2018

Foreign Direct Investments in Paris Region: Main Countries by Business Origin and Jobs Created in 2020 (ranked by number of jobs created)



2020 FDI Arrivals

336 foreign direct investments (fdi) from 42 countries, representing nearly 10,800 jobs in the long term.

Main continents of origin

- 188 fdi from European groups, 6,265 jobs (58%)
- 83 fdi from American groups, 3,731 jobs (34.6%)
- 54 fdi from Asian and Oceanian groups, 663 jobs (6.1%)
- 11 fdi from other countries (Africa, Middle East), 138 jobs (1.3%)

Main countries of origin by number of jobs

- USA: 3,438 jobs (32%)
- Germany: 2,561 jobs (24%)
- UK: 878 jobs (8.1%)
- Switzerland: 637 jobs (5.9%)
- Spain: 382 jobs (3.5%)

Paris Region, gateway to European markets, strengthens its position in high value-added investments attracted by local talent

- Almost 80% of projects and 64% of jobs are generated by decision-making centers, business services and R&D
- These decision-making centers generate around 2,000 jobs

The reinvestment results (5,500 jobs created, i.e. + 51% compared to 2019), confirm investors' confidence in the opportunities offered by the Region for the development of their activities.

Choose Paris Region

Top Major Paris Region companies dependent on foreign groups (based on salaried workforce)		
Country	Company	Salaried workforce
Netherlands	Ranstad	71,296
USA	Euro Disney Associes SAS	16,608
Sweden	Securitas France SARL	11,821
Canada	CGI FRANCE	11,093
United Kingdom	Action France	10,983
Netherlands	Meubles Ikea France	10,336
Qatar	Inetum	8,617
Luxembourg	Conforama France	7,915
Luxembourg	Arcelormittal France	7,488
Luxembourg	BUT International	7,122
Sweden	H&M Hennes & Mauritz	6,886
USA	Amazon France Logistique	6,428
USA	OTIS	6,049
Luxembourg	Société Française de Radiotéléphone – SFR	6,029
Spain	ZARA FRANCE	5,990
United Kingdom	BUFFALO GRILL	5,288
China	CLUB MED	5,207
Luxembourg	PICARD SURGELES	5,055
USA	CIE IBM FRANCE	4,925
United Kingdom	BRICO DEPOT	4,843

Diane 2022

Competitive Business and Living Costs

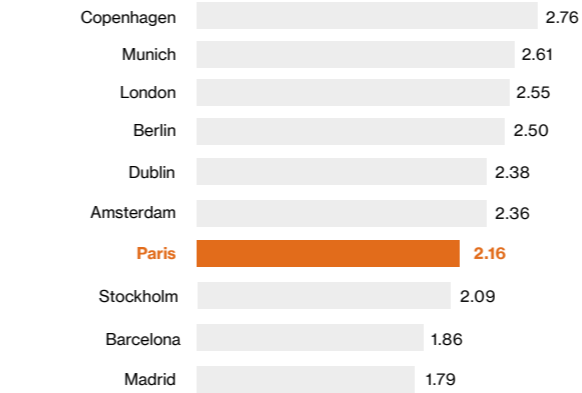
Studies show that the cost of living in Paris Region compares favorably to other international cities such as New York, London, San Francisco and Geneva. That not only applies to personal costs such as housing, education, culture, and healthcare, but also to business expenses such as recruitment and office space, which is a great incentive for people to build their professional and personal future in the Region.

Very Competitive Costs to Run a Business

Budgeting for a team of 20-30 people (Million US\$ per year). Example for an A Stage software-as-a-service (SaaS) company			
City	Average Salary costs (\$M)	Average Office Space Cost (\$M)	Average Total Cost Base (\$M)
Copenhagen	2.70	0.06	2.76
Munich	2.49	0.12	2.61
London	2.25	0.30	2.55
Berlin	2.27	0.23	2.50
Dublin	2.21	0.17	2.38
Amsterdam	2.25	0.11	2.36
Paris	2.05	0.11	2.16
Stockholm	1.92	0.17	2.09
Barcelona	1.78	0.08	1.86
Madrid	1.68	0.11	1.79

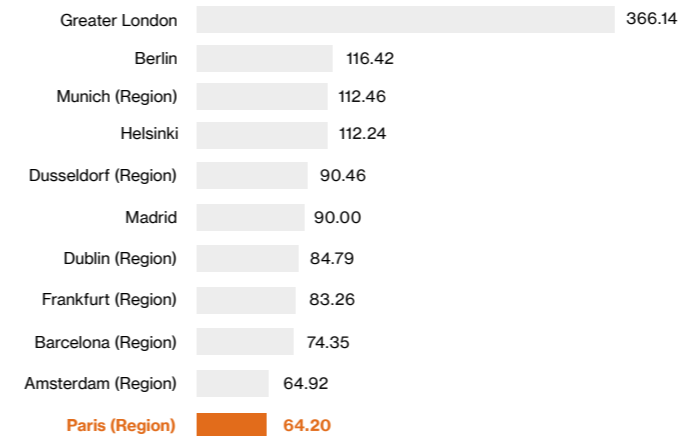
The State of European Tech 2020, Atomico - AON, CBRE

Budgeting for a Team of 20-30 People (Million US\$ per year) Example for an A Stage software-as-a-service (SaaS) company



The State of European Tech 2020, Atomico - AON, CBRE

Industrial Costs: Total Cost of Industrial Space Based on Rental Fees Plus Any Taxes and/or Service Charges (Q3 2020). Cost (€ per m²)



Colliers/IDI Intelligence (Q3 2020)

A Very Competitive Cost of Living

Paris Region is More Affordable Than Greater London and Less Expensive Than Many European Regions

Cost of Living Survey 2021

Paris, ranked at the 33rd position, is less expensive than these European cities:

- #1 Ashgabat
- #2 Hong-Kong
- #3 Beirut
- #4 Tokyo
- #5 Zurich
- #6 Shanghai
- #7 Singapore
- #8 Geneva
- #9 Beijing
- #10 Bern
- #16 Copenhagen
- #18 London

Mercer 2021 (Selection of cities)

Living costs are balanced out by the French public school and university systems' low tuition fees and the social security system.

Cost of Living in Paris Region vs Greater London			
Category	Description	Paris Region	Greater London
Real Estate	Rent per month for a 3-bedroom apartment downtown. 32% less expensive in Paris Region	€2,759	€4,049
Transport	30 to 60% less expensive in Paris Region depending on the type of transport: single ticket, monthly pass, cab. The monthly pass gives access to the entire Paris Region transport network (13 train lines, 14 metro lines, 1,500 bus lines, 9 streetcar lines...)	€75	€191.60
Food	Restaurant for two (medium range)	€60	€75
Health	Particularly affordable health care rate in Paris Region 79% less expensive in Paris Region for a short visit to a private physician (15 mn)	€25	€121
Sports	35% less expensive in Paris Region for a monthly fitness club membership	€38	€58
Entertainment	The costs for leisure and entertainment are less expensive in Paris than in London 34% less expensive in Paris Region for 1 Movie ticket	€11.45	€17

Le Coût de l'Expat, Expatistan, 02/2022

Europe's Largest Talent Pool

Home to a large, well-educated, and international workforce, Paris Region is an ideal place to source technical skills and top talent. The Region's world-class universities and engineering schools are a major appeal for companies looking to recruit.

The region has a rich, diversified and remarkably resilient job market. With nearly a quarter of all French jobs, Paris Region has emerged stronger from the 2009 crisis and now has a lower unemployment rate than elsewhere in France. This talent pool full of culture and diversity ensures a global influence.



© AdobeStock

A Breeding Ground for Talents

6.5 M
Jobs

INSEE 12/21, data 2020

6 M salaried jobs
0.5 M non-salaried jobs

Insee 12/21, data 2020

23%
of all jobs in France

INSEE 10/21, data 2020

Executives' average annual net salary: **€57,876**

Insee 10/21, data 2018

35%
of all French executives

INSEE, 2021, data 2018

Average annual net salary: **€34,408**

Insee 10/21, data 2018

7.3% Unemployment rate

Insee 10/21, data 2020

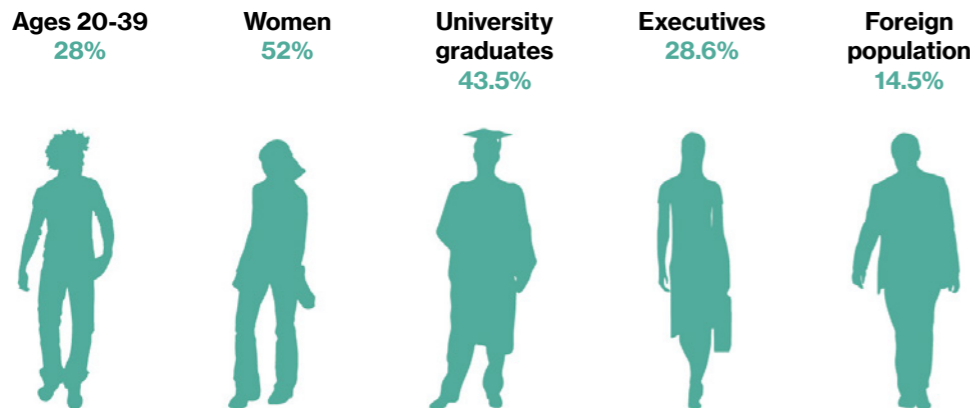
87.5% jobs in Services
6.9% in Industry
5.4% in Construction
0.2% in Agriculture

Insee 12/21, data 2020

Paris Region's Active Population by Profession		
Managerial and highly-skilled occupations	1,750,690	28.6%
Service workers, sales, and administration	1,595,087	26.0%
Skilled and mid-level employees	1,547,471	25.2%
Laborers	822,313	13.4%
Skilled tradesmen and business directors	307,810	5.0%
Farm, fishing and forest operators	102,013	1.7%
Others	5,172	0.1%
Total active population (15-64 years old)	6,130,556	100%

Insee 6/21, data 2018 - Total population 15-64 years

Characteristics of the population in Paris Region



© L'INSTITUT PARIS REGION
Source : Insee 2021, data 2018, 2021

Employment growth in Paris Region

45,000
jobs created per year in Paris Region between 2007 and 2019

The region gained **500,000** jobs between 2007 and 2019, period framed by two major global crises: that of 2008 and the Covid-19 crisis that began in early 2020.

L'Institut Paris Region, Insee Estel

A Highly Qualified Workforce in Science and Technology

Paris Region, #1 EU27 region in

- Scientists and engineers: **632,100**
- People employed in science and technology: **2,656,500**

Eurostat, 2021, data 2020

Sites and salaried jobs by aggregate industry and size at the end of 2018		
Business sector	Sites	Jobs
Agriculture, forestry and fishing	1,732	5,173
Industry	17,962	427,652
Construction	40,781	295,440
Trade, transport, various services	336,850	3,614,586
of which trade and car repair	78,447	744,817
Public administration, education, health, and social action	41,181	1,581,911
Total	438,506	5,924,762

Insee, Flores (Fichier Localisé des Rémunérations et de l'Emploi Salarie) in geography on 01/01/2021

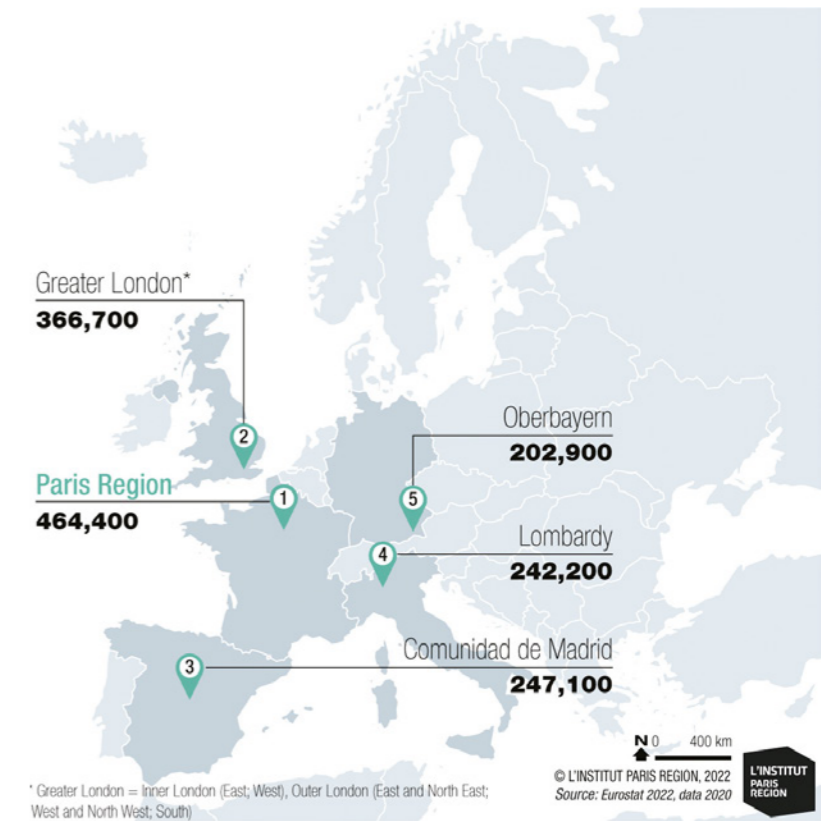
411,000
jobs in information and communication

430,000
jobs in manufacturing services

333,000
jobs in financial and insurance services

Insee 04/2021, data 2018

EU28 Top 5 Regions for People Employed in Technology and Knowledge-intensive sectors - All NACE activities (2020, *2019)



* Greater London = Inner London (East, West), Outer London (East and North East; West and North West; South)

© L'INSTITUT PARIS REGION, 2022
Source: Eurostat 2022, data 2020

Sector Breakdown of Business Sites and Jobs in Paris Region		
Business sector	Sites	Jobs
Scientific and technical activities; administrative and support services	103,444	1,074,247
Trade of automotive vehicles and motorcycles	78,447	744,817
Public administration, education, health, and social action	41,181	1,581,911
Other service activities	40,805	266,813
Construction	40,781	295,440
Accommodation and food	39,869	328,640
Information and communications	25,036	411,142
Financial and insurance activities	18,740	333,090
Transportation and storage	15,876	378,481
Real Estate	14,633	77,356
Manufacturing of other industrial products	8,884	150,064
Manufacturing of food products, beverages, and tobacco products	5,601	51,138
Production / distribution of water, sewerage, waste management, and remediation activities	1,740	83,797
Agriculture, forestry and fishing	1,732	5,173
Manufacturing of electrical, electronic and computer products, machinery, and equipment	1,458	64,402
Manufacturing of transportation equipment	269	73,401
Coking and refining	10	1,850
Total	438,506	5,924,762

Insee, Répertoire des entreprises et des établissements - Commercial activities excluding agriculture, Active employing sites and salaried positions by detailed activity sector, 04/2021, data 2018

The Highest Concentration of Qualified Students

Paris Region offers a world-class education system with an ever-increasing number of programs catering to the needs of international students and families. Universities, engineering, business and specialized schools rank among the most prestigious in the world and offer an internationally renowned education, providing everyone with the best adapted training curriculum.



© GOBELINS, l'école de l'image

The French Education System

The education system is operated by the French Public Education Authority.

Schooling is compulsory from 6 to 16 years old.

Public pre-school is available for children starting from 2 years old.

Primary and Secondary Education (public and private)

3,911 nurseries
DREES/OSOL/BCL 2021, data 2019

6,666 pre-schools and primary schools
1,322,460 pupils
90.2% in public schools

1,990 secondary and high schools
1,093,925 students
80.7% in public secondary and high-schools

Ministry of Education, Higher Education and Research, RERS 2021, data 2020



3,146,553

Population enrolled in school

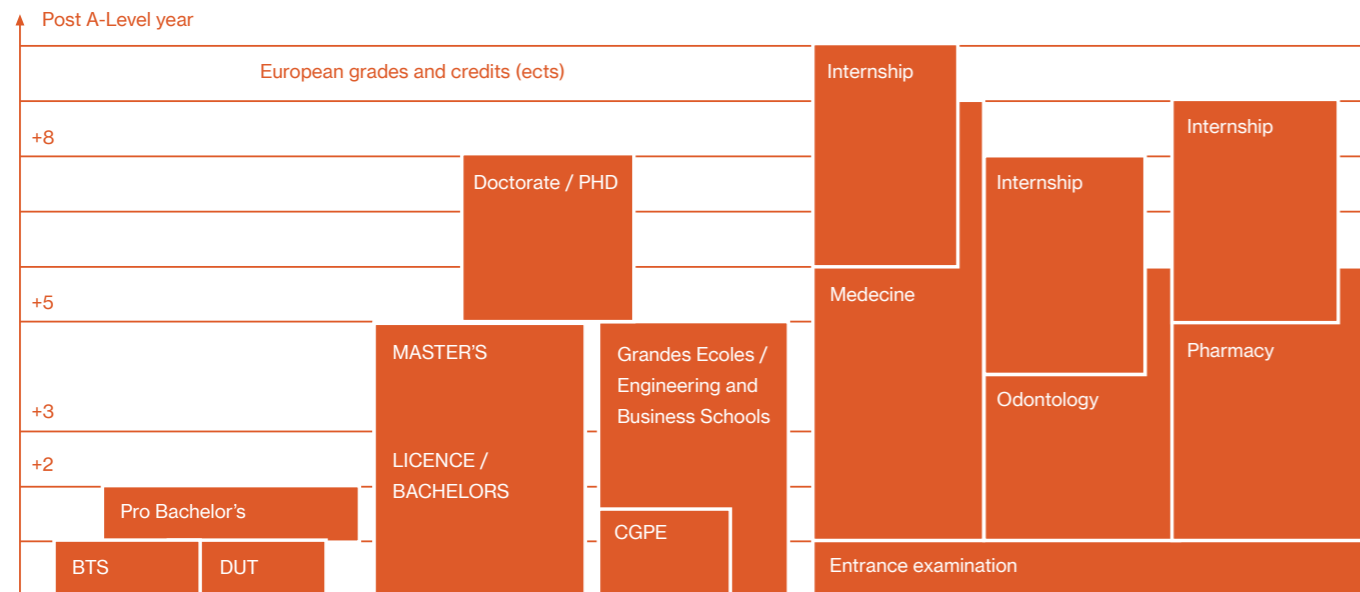
Ministry of Education, Higher Education and Research, RERS 2021, data 2020

25.5%

of the population is enrolled in school

Ministry of Education, Higher Education and Research, RERS 2021, data 2020

Higher Education



A-Levels

MESR (French Ministry of Higher Education and Research) - BTS: Technical programs - DUT: University Diploma of Technology
Grandes Ecoles: Engineering & Business schools - CPGE: class which prepares students to enter the Grandes Ecoles

Highly Educated Students

734,260
students

26.4% of France's student population

380,737 students in Paris Region's public universities
Ministry of Education, Higher Education and Research, RERS 2021, data 2020-2021

102 doctoral schools
Ministry of Education, Higher Education and Research 2020

20,264 PhD students, incl. **7,431** foreign PhD students
31.5% of PhD students in France
Ministry of Education, Higher Education and Research 2019-2020

43.5%

of the adult population holds at least a bachelor's degree

Insee 10/21, data 2018

24 higher education sites, **4** of which have one or more locations
Atlas regional Ile-de-France, Ministry of Education, Higher Education and Research 2020

69 "Grandes Ecoles" (elite schools) incl. **36** engineering schools.
Dozens of business schools
Conférence des Grandes Ecoles, 2022

Main Fields of Study in Paris Region's Public Universities (in 2020-21)

Breakdown of the Students in Paris Region's Public Universities in 2020-2021		
Fields of study	Total students	% on total
Law, Political Science, Economics and Administration	124,306	29
Languages, Arts, Humanities and Social Sciences	134,862	32
Sciences	98,116	23
Sports	8,537	2
Health	61,162	14
Total	426,983	100

Ministry of Education, Higher Education and Research 11/21, data 2020-2021

Main Branches of Higher Education in Paris Region (in 2020-21)

LMD Licence, Masters and Doctorates (Bachelor's, Master's, and PhD): **296,540**

Business schools, management and accounting: **81,314**

Engineering schools: **46,415**

Preparatory classes for the Grandes Ecoles: **31,181**

Advanced technician programs: **47,569**

Advanced technician programs in apprenticeship: **22,304**

University programs in technology: **18,879**

Paramedical and human services schools: **29,126**

Other university diplomas, including health: **156,666**

Others (art, architecture, private universities, etc.): **77,559**



Cité Internationale universitaire de Paris © Antoine Meyssonier

In order to strengthen Paris Region in terms of higher education and research, the project of the "Cité Universitaire Internationale" (International University Campus in Paris) plans to increase the capacity of the campus by **30%** (**12,000** students, researchers and artists from **150** countries) per year with the creation of **10** new houses in addition to the **43** existings pavillions, i.e. **1,863** additional units.

Cité Internationale universitaire de Paris 2022

70,000
students in business schools

Ministry of Education, Higher Education and Research, ni-sies-2021-14, Data 2020-21

46,000
students in engineering schools

Educational Excellence With an International Outlook

The excellence in higher education and research in France is widely acknowledged around the world. Numerous prestigious universities and higher education institutions in Paris Region stand out in the most reputable international rankings, such as the Financial Times ranking, the Times Higher Education, the Shanghai ranking (ARWU)...

Young people benefit from prestigious universities and exceptional graduate and specialized schools.

Within its best-ranked business schools, MBAs and universities, companies will find a pool of highly skilled talents ready to grow their business.

MBAs and Business Schools Financial Times Rankings (2021)

- Global MBA program**
- INSEAD, **best in the world**
 - HEC Paris **#7**

- 5 of the Top 15 EMBA Executive MBA programs**
- HEC Paris, **best in the world**
 - HEC/LSE/NYU:Stern **#5**
 - ESCP Europe **#6**
 - Tsinghua University/INSEAD **#11**
 - INSEAD **#15**

- 5 of the Top 15 European Business Schools**
- HEC Paris **#1**
 - INSEAD **#3**
 - Essec Business School **#8**
 - Edhec Business School **#10**
 - ESCP Europe **#14**

- 4 of the Top 10 Masters in Management**
- HEC Paris **#2**
 - Essec Business School **#6**
 - ESCP Europe **#7**
 - Edhec Business School **#9**

Prestigious Universities

- 4 of Paris Region's Universities are in the Top 100 best universities in the world (ARWU 2021)**
- Paris Saclay University **#13**
 - Sorbonne University **#35**
 - Paris Sciences et Lettres – PSL **#38**
 - Paris University **#73**

- 3 of the world's 15 best Universities in Mathematics**
- Paris Saclay university, **best in the world**
 - Sorbonne University **#3**
 - Paris Sciences et Lettres – PSL Research University Paris **#13**

ARWU Global Ranking of Academic Subjects 2021

- 2 of the world's 10 best universities in Physics**
- Paris Saclay University **#9**
 - Paris Sciences et Lettres – PSL **#10**

- 2 of the world's 20 best universities in Atmospheric Science**
- Sorbonne University **#14**
 - University of Versailles Saint-Quentin-en-Yvelines **#16**

ARWU Global Ranking of Academic Subjects 2021



© HEC



Paris Saclay University Open Festival © Evanescence

Specialized Schools

GOBELINS, the school of the image
best international animation school in the world
out of 178 international animation schools and universities
International Animation School Ranking 2021

ESMOD International & Institut Français de la Mode
The 2 Best French Fashion Design Schools in the World 2022 ranking
The Business of Fashion 2022

ESMOD International, Paris
#17 best fashion school in the world
CEOWORLD magazine, Fashion school ranking, Business of Fashion, 2021



© GOBELINS, l'école de l'image

A Region Attracting Foreign Talent

96,400
international students
in Paris Region

13.7% of students in Paris Region
30.5% of all international students in French higher universities and similar institutions.

Of these, **80,700** are in Paris Region's universities and similar institutions, which is **21.3%** of the Region's public university students.

57,100 international students are enrolled in Bachelor's, Master's or Doctoral programs

7,514 international PhD students, i.e. **32.6%** of PhD students in Paris Region

Erasmus, Régions de France, Ministry of Education, Higher Education and Research 2019-20

An Ever-Increasing Number of International and Bilingual Education Opportunities

Paris Region offers a world-class education system with an extensive selection of international schools open to more than **23,000** foreign and French pupils from preschool to high school:

8 international public high schools and **1** more scheduled for to open in 2023, **1** European school.

Near **120** schools with **168** international sections (bilingual programs) or binational sections offering bicultural education and intensive schooling in **17** different foreign languages.

A Variety of Curriculum and Diplomas

Nearly 40 international private schools, including well-known schools:

- British School of Paris
- American School of Paris
- International School of Paris
- Jeannine Manuel
- EIB Paris
- Marymount
- Deutsche Schule Paris
- Liceo italiano Leonardo da Vinci
- Liceo Español Luis Buñuel, etc

French schools with international sections follow the national French curriculum offering an International Section where foreign languages and some courses such as history, geography and literature are taught in a language other than French.

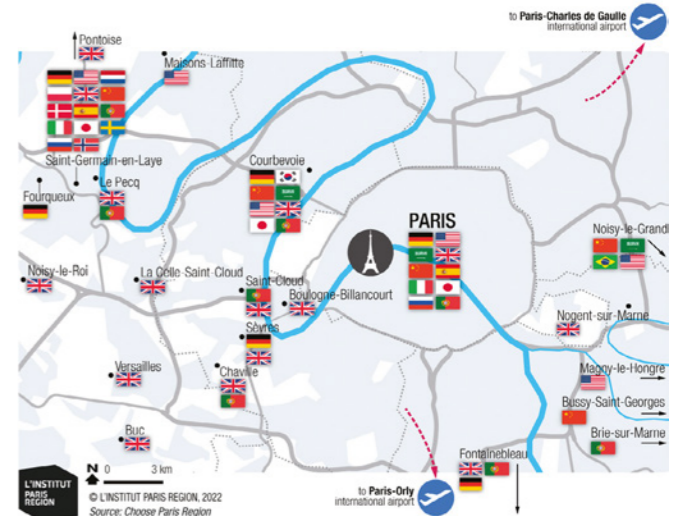
Recent international school openings include the European School in Paris-La Défense (Courbevoie), an international high-school in Palaiseau and other upcoming projects.

Diplomas in Paris Region	
European Baccalaureate	Courbevoie
International Baccalaureate (IB) diploma	Paris, Maisons-Laffitte, Saint-Cloud, Verneuil-sur-Seine
A-Levels	Paris, Croissy-sur-Seine
US High School Diploma	Paris, Saint-Cloud, Verneuil-sur-Seine
ABIBAC - German Abitur Allgemeine Hochschulreife + French Baccalaureate	Paris, Combs-la-Ville, Le Raincy, Dourdan, Courbevoie, Enghien-les-Bains, Rueil-Malmaison, Buc
BACHIBAC - Spanish Bachillerato + French Baccalaureate	Paris, Noisy-le-Grand, Maisons-Alfort, Montigny-le-Bretonneux, Sartrouville, Dourdan, Bois-Colombes, Sceaux, Ermont, Pontoise
ESABAC - Italian Esame di Stato + French Baccalaureate	Paris, Saint-Denis, Saint-Maur-des-Fossés, Rambouillet, Massy, Bois-Colombes, Sarcelles
OIB - French Baccalaureate with an International Option	Paris, Buc, Courbevoie, Fontainebleau, La Celle-Saint-Cloud, Maisons-Laffitte, Nogent-sur-Marne, Noisy-le-Grand, Pontoise, Saint-Cloud, Saint-Germain-en-Laye, Sèvres, Versailles

International Students in Paris Region's Universities and similar institutions in 2019-20			
	Paris Region	France	% Paris Region / France
Africa	38,100	131,865	28.9
Americas	7,988	22,842	35.0
Asia	14,445	48,895	29.5
Europe	20,037	60,983	32.9
Others	167	480	34.8
All	80,737	265,065	30.5

Ministry of Education, Higher Education and Research, 2019-20

168 International Sections in 17 Different Languages



	ES	SS	HS		ES	SS	HS
American	4	7	5	Japanese	3	3	2
Arab	2	5	4	Korean	1	1	0
Brazilian	0	1	1	Norwegian	1	1	1
British	10	21	14	Polish	1	2	2
Chinese	6	7	6	Portuguese	3	8	4
Danish	1	1	1	Russian	1	1	1
Dutch	1	1	1	Spanish	2	3	2
German	6	6	4	Swedish	1	1	1
Italian	2	4	2				

ES: Elementary schools - SS: Secondary schools - HS: High Schools - Ministry of Education 10/2021, data 2021

Paris Region's International Education Guide:
internationaleducation.parisregion.eu

Paris Region, an Innovation Powerhouse

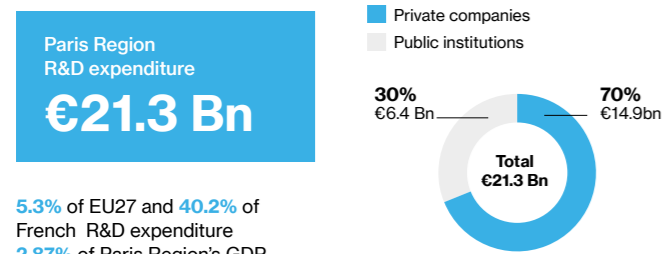
Paris Region is a land of innovation recognized on a European and global scale, with an overall R&D spending equivalent to that of Silicon Valley. R&D accounts for the employment of more than 165,500 people in global R&D centers across a variety of businesses. Its diversified economy buzzes with top-ranked high-tech clusters and research centers, which generate exciting opportunities for cross-sector collaborations. Mainly carried out by private companies, R&D in Paris Region accounts for two-thirds of total expenditure and represents more than 85% of design-research jobs.



© Unsplash

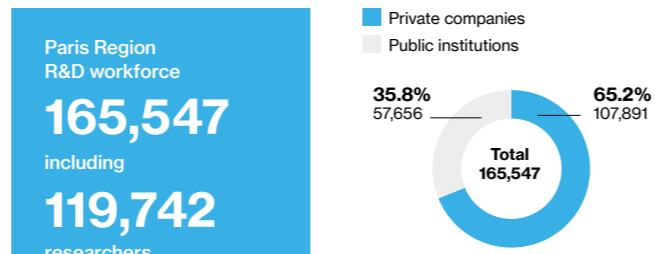
#1 in Europe for R&D (2017/19)

The highest amount of R&D expenditure in Europe



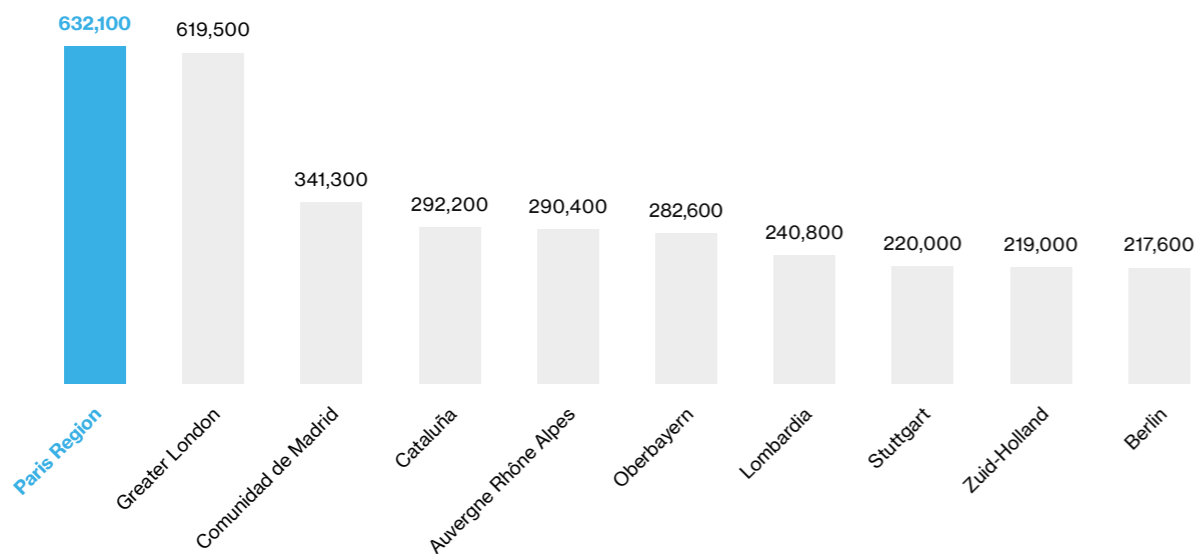
In Paris Region, 70% of R&D spending is carried out by companies.
Ministry of Education, Higher Education and Research, data 2019

The largest R&D talent pool in Europe



R&D talent such as professors, researchers, engineers, technicians and support staff work in universities, Grandes Ecoles, public institutes and companies.
Ministry of Education, Higher Education and Research, 2021, data 2017

Paris Region, the best place in Europe to source Scientists and Engineers

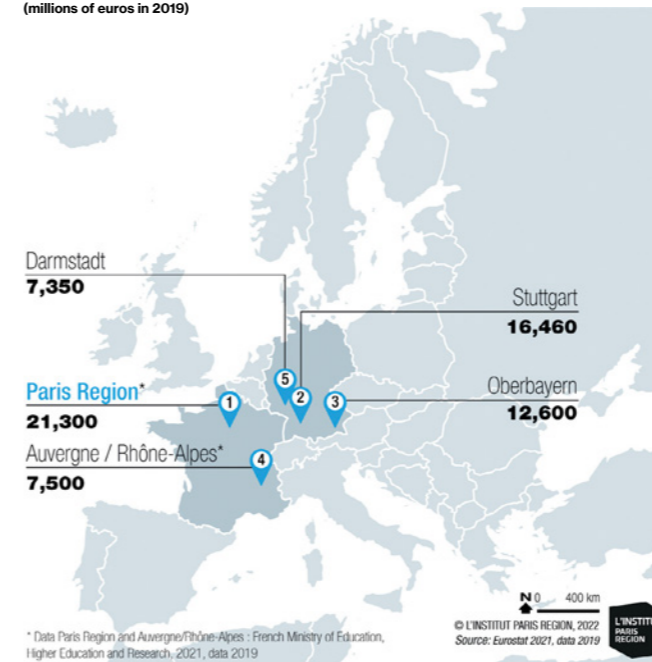


Eurostat, Scientists and engineers, 09/2021, data 2020, NUTS 2 (Greater London = Inner + Outer London)

#1

European Region for Research & Development Expenditure

EU28 Top 5 regions by R&D expenditure (millions of euros in 2019)



* Data Paris Region and Auvergne/Rhône-Alpes: French Ministry of Education, Higher Education and Research, 2021, data 2019

At the Forefront of Innovation

Paris is ranked at Europe's #1 and the world's #10 largest science and technology clusters according to the Global Innovation Index 2021
Cornell University, INSEAD, WIPO, 2021

Paris:
• #1 most innovative city in Europe
• #7 in the world, ahead of London (#9), Berlin (#18), Munich (#21) and Helsinki (#24) in Europe

Paris stands out for its:
• High number of international projects
• High volume of start-ups
• Above-average R&D spending as a percentage of GDP
• Large number of international patents filed
• High level of patenting activity, particularly in the private sector
• Areas of excellence, which include transportation equipment, pharmaceuticals and biotechnology
JLL, Innovation Geographies, 2020, 2022

Patents

7,614 patents filed, i.e. 61.6% of the patents filed in France
INPI, data 2020

Paris Region is the European leader, and accounts for 4.4% of all European patent applications in EU 28.

In 2017, the Region's scientific output accounted for 3.7% of European publications.

Publications

19,917 scientific publications in 2017
34.5% of the national publications.

The Region specializes in mathematics, physics, human and social sciences, sciences of the universe

Paris Region: 26% of international copublications, especially with the USA, the UK, Italy and Japan.
Hceres, OST, 2021

Internationally Recognized Technological and Scientific Knowledge

In terms of research, the Region's reputation is internationally renowned, with researchers having been recognized with numerous prizes and distinctions.

Paris Region is home to the highest concentration of mathematicians in the world, including many Abel Prize and Fields Medal winners.

33

Nobel Prizes

The two most prestigious awards in mathematics

4

Abel Prizes

11

Fields Medals

A Concentration of National Scientific Power

102 doctoral schools

20,264 students enrolled in doctoral programs, i.e. 31.5% in France

7,431 foreign PhD students
Ministry of Education, Higher Education and Research 2019-2020

5,789 foreign researchers
40.2% of foreign researchers in France
FNAK, data 2018

The highest number of scientists and engineers, of people employed in Technology and Knowledge-intensive sectors, in science and technology
Eurostat, 2021, data 2020

Presence of Major Research Infrastructures

2 out of 3 of European most innovative research institutions

#1 CNRS National Center for Scientific Research

#3 CEA Alternative Energies and Atomic Energy Commission

#12 INSERM National Institute of Health and Medical Research
European Research Ranking, 2020

The CNRS National Center for Scientific Research holds top international rankings

- #2 in Scimago Institutions Rankings
- #4 in the Nature Index
- #3 most visible research institution on the Web
- #6 largest patent filer in France
- #8 most innovative public research institution
- 33,000 people dedicated to research in France
- 1,144 research laboratories in France and abroad

A Multidisciplinary Technological Hub in the Heart of Europe

Paris Region is renowned for its competitiveness clusters, especially in tech. From artificial intelligence to biotechnology, nanotechnology, telecommunications, AR/VR, 3D Animation, and Aerospace, businesses can plug into a fast-growing ecosystem in no time. By bringing together large corporations, SMEs, start-ups, academics and researchers, Paris Region spurs remarkable collaborations and open innovation partnerships.

8 regional competitiveness clusters make up this dynamic ecosystem.

- 4,936 members including:
- 3,698 companies
 - 694 labs and teaching institutions



ASTech

Aeronautics, space and defence

- 306 members, incl.
- 109 major groups
 - 117 SMEs
 - 48 labs and teaching institutions

73 projects funded since the cluster was founded

Total funding: €313 M

Cap Digital

Digital and ecological transformation

- 904 members, incl.
- 71 major groups
 - 752 SME's
 - 63 labs and teaching institutions
 - 12 investments funds
 - 7 urban communities

828 projects funded since the cluster was founded

Total funding: €1.75 Bn

Cosmetic Valley

Perfumery and cosmetics

- 600 members, incl.
- 80 major groups
 - 520 SME's
 - 200 labs and teaching institutions

350 projects funded since the cluster was founded

Total funding: €450 M

Finance Innovation

Financial services

- 600 members, incl.
- 180 major groups
 - 400 SME's
 - 20 labs and teaching institutions

28 projects funded since the cluster was founded

Total funding: €1 Bn (publicly and privately raised funds)



Medicen

High-tech healthcare and new therapies

- 510 members, incl.
- 42 major groups
 - 427 SME's and startups
 - 34 labs and teaching institutions

470 projects accelerated by the cluster

Total funding: €2.30 M

Next Move

Automotive and mobility industry

- 570 members, incl.
- 106 major groups
 - 332 SME's
 - 88 labs and teaching institutions
 - 17 partners or private institutions

306 projects funded since the cluster was founded

Total funding: €1.6 Bn

Polymeris

Rubber, plastics and composites industry

- 546 members, incl.
- 43 major groups
 - 191 SME's
 - 25 mid-caps
 - 73 micro-enterprises, start-ups
 - 101 research centers, universities or training organizations
 - 13 regional governments or institutional bodies
 - 99 others

350 projects funded since the cluster was founded

Systematic

European innovation and technology cluster in digital and Deep Tech

- 900 members, incl.
- 150 major groups
 - 600 start-ups / SME's / mid-cap companies
 - 140 labs and teaching institutions
 - 20 investors
 - 20 local authorities and institutional bodies

625 projects funded since the cluster was founded

Total funding: Over €3.18 Bn

ASTech, Cap Digital, Cosmetic Valley, Finance Innovation, Medicen, NextMove, Polymeris, Systematic (data 2021)

One of the Most Fiber-Connected Regions in Europe

Paris Region's economy relies on its strong digital ecosystem to cater to the needs of many industries.

The Region is the connection point for all existing Internet networks in France.

The Fiber-to-Home Infrastructure currently covers almost 100% of the Region, making the system available to everyone regardless of whether they live in a dense urban environment or rural areas.

The Region has a dense data center and telecom infrastructure, making it the 4th densest region in this sector in Europe.



© DATA4 FRANCE, Marcoussis (Essonne, 91)

A Smart and Connected Region

Launched in February 2013, the High-Speed Broadband France Plan aims to cover the entire country by 2022 by proposing high-speed internet access to all houses, businesses and government departments.

Paris Region aims to be the first region in Europe to be entirely equipped with fiber-optic cables by 2025.

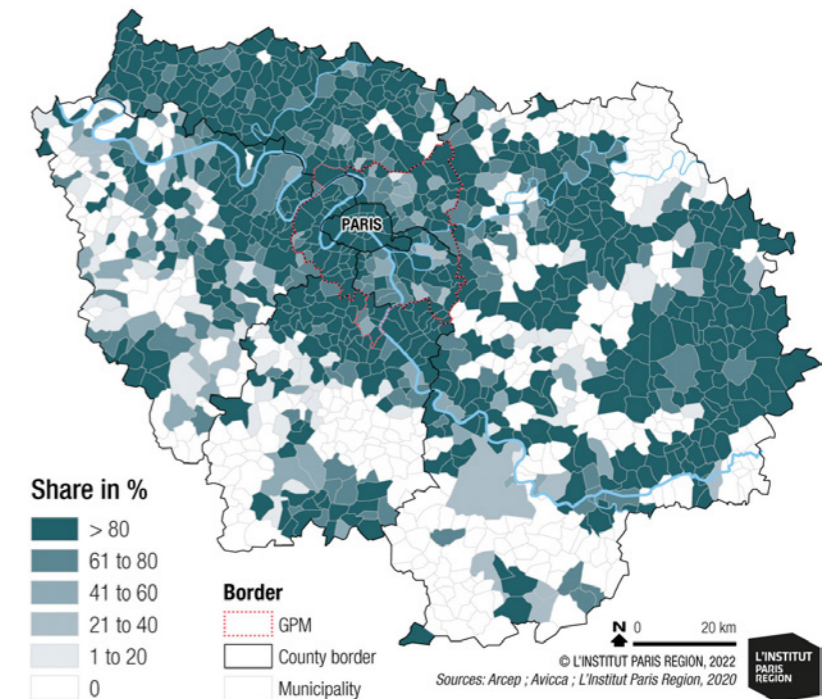
Reliable Telecommunications and Networks

- 4G Mobile Telephony**
- 4 operators (Orange, Bouygues Telecom, SFR, and Free)
 - 99.8% of the population is covered
 - 100% coverage in the Paris metro (tunnels and stations)

- 5G Mobile Telephony**
- The 4 operators have deployed their networks in the metropolitan area.
 - Nearly 90% of the sites equipped with 5G offer very high speed mobile broadband (theoretical speed 240 Mbit/s).

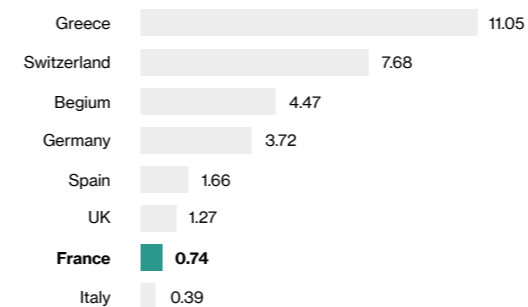
ARCEP, 30/09/2021

FtTH (Fiber to the Home) Deployment in Paris Region Share of Potentially Connected Premises at the City Level State of the art 1st quarter 2020



France offers very competitive costs

Average Cost of a Gigabyte of Mobile Data on a Package Basis in Feb 2020 (in euros)



Cable.co.uk (via Statista), 2020

Europe's Largest Scope of Real Estate Solutions

With a real estate market offering of 55 million m², Paris Region is a constellation of diverse, specialized districts that make it a highly attractive location for a range of industries, research areas, and lifestyles.

The real estate market has recently transformed as companies rethink the traditional office model in favor of more flexible options and third-party locations.

Home to a variety of coworking spaces and the world's biggest startup campus, Paris Region real estate offers an ecosystem of collaboration and true business synergy.



La Défense Business District © 11h45 pour Defacto

Office Space

Surface area

54.9 million m²

- Immediate supply: **4 million m²**
- Vacancy rate: **7.4%**
- Take up: **1.9 million m²**
- Space under construction: **2 million m²**

Immostat & Deloitte 2021, data 2021

Prime rent in central Paris
• **€910/m²/year**

Prime rent in La Défense
• **€560/m²/year**

Average rent in Paris Region
• **€411/m²/year**

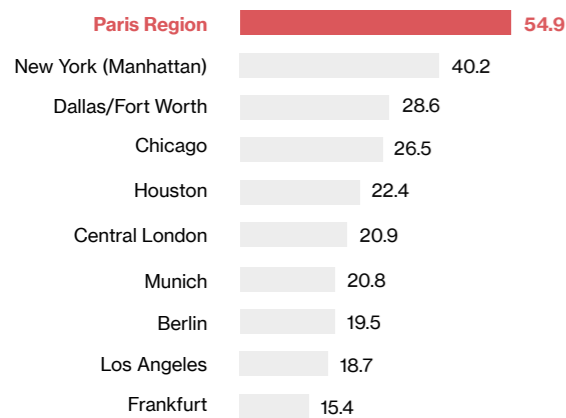
JLL 2021, data 2021

ORIE, 2021

Around **1,500** areas for business activity

34 business districts
Paris La Défense, the **4th** largest business district in the world
EY-JULI 2020

Office Stock in Major World Capitals in Million m²



Q3 2018 for Europe, Q2 2018 for the USA
ORIE for Paris Region 2021, BNP Paribas Real Estate for other countries

Paris Region: Twice Cheaper Than London in Office Rent

Office Rent Space Tracker (2020) USD Market Ranking			
Rank	Country	City	Occupancy costs \$US/sq ft/year
1	China	Hong Kong, Central	261
2	USA	New York, Midtown	261
3	China	Beijing, Finance Street	196
4	United Kingdom	London, West End	191
5	USA	Silicon Valley	174
6	China	Beijing, CBD	152
8	Japan	Tokyo, Marunouchi	150
9	USA	New York, Midtown South	148
10	China	Shanghai, Pudong	130
11	China	Beijing, Zhongguancun	123
12	China	Shanghai, Puxi	115
13	Japan	Tokyo, Shibuya	115
14	United Kingdom	London, City	114
15	China	Hong Kong East	111
16	Singapore	Singapore	110
17	USA	Los Angeles, Westside	110
18	India	Delhi, Connaught Place	109
19	China	Shenzhen	107
20	USA	Cambridge (Massachusetts)	106
21	USA	New York, Downtown	106
22	Japan	Nagoya	105
23	USA	San Francisco	103
24	India	Mumbai, SBD BKC	102
25	Japan	Tokyo, Shinjuku	101
26	France	Paris	97

Jones Lang Lasalle Global Premium Office Rent Tracker 12/21, data 2020

Everything You Need to Scale Up

Coworking spaces, business centers, shared offices - in recent years the number of places where people can work remotely has steadily grown in Paris Region.

Innovation centers, particularly incubators, are a point of convergence for young talents, researchers, and ground-breaking companies.

1,008
"third places", providing flexibility to the workforce, comprising:

- 380 coworking spaces
- 242 shared offices
- 133 fablabs
- 253 business creation or development support sites

L'Institut Paris Region, 2022

The World's Biggest Start-up Campus

Based in central Paris, STATION F gathers a whole entrepreneurial ecosystem under one roof.

- 51,000 m²
- 1,000+ start-ups
- 600 rooms
- 100 appartements
- 30+ start-up programs

Station F, 2021

The Grand Paris Express: A Great Opportunity for Urban Projects (2022)

To enhance its attractiveness and competitiveness in our globalized world, Paris Region is undertaking major infrastructure and urban planning projects. This includes the Grand Paris project, the largest urban project in Europe, which will provide a new transport network, new residential projects, office districts, and R&D hubs open to international competitions to reinvent Paris Region.

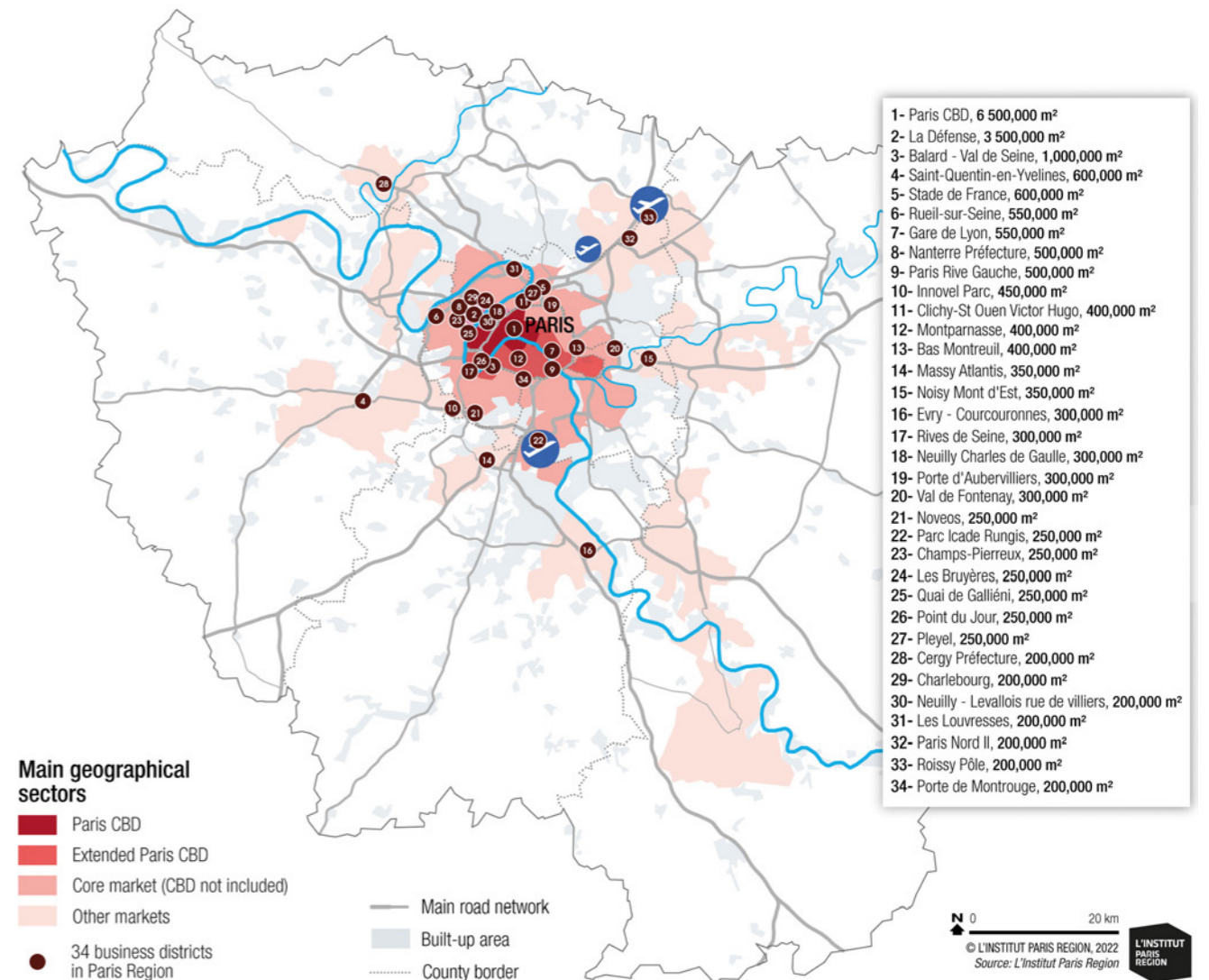
The Grand Paris Express is paving the way for a substantial increase in additional housing in Paris Region, with the creation of **250,000** to **400,000** housing units.

The Grand Paris Express is accelerating the urban renewal process in **140 km²** of neighborhoods within an 800-meter radius of each station on the rail line and represents a total development potential of **32 million m²**.

More than **100** projects will be developed by 2030 by Société du Grand Paris on land acquired for the construction of the Grand Paris Express, for a total floor area of **1 million m²**:

- **8,000** diversified housing units (nearly 60% is residential)
- **43,000 m²** of retail and services in addition to the **20,000 m²** inside the stations
- **380,000 m²** of business space
- **70%** of the projects will be built with bio-sourced materials, **50%** of which will be wood.

The Paris Region Office Market



A World-Class Transportation Network

Located at the crossroads of Europe, companies based in Paris Region can easily access a market of 500+ million customers and all major European cities. Easy to access with 3 international airports and 7 TGV high-speed train stations, Paris Region connects to all of the world's major economic centers. As the region prepares to host the 2024 Olympic Games, several major public infrastructure projects are underway and will be constructed by 2030, including the Grand Paris Express.



Railway bridge over the Oise © Pierre-Yves Brunaud - L'Institut Paris Region

A Gateway to Europe and the World

By plane*

Paris Aéroport, ACI, 2019/2020

- 3 international airports
- 368,668 aircraft movements
- 165 airlines
- 119 countries and 328 destinations reachable from Paris

41.9M
passengers

4.5M
connecting passengers

Paris-Charles de Gaulle (CDG)

- #1 in Europe for international traffic
- 4,578,829 connecting passengers
- #2 in Europe for passenger traffic
- 26.2 million passengers
- 250,111 aircraft movements
- 328 destinations

Paris-Orly

- 15.7 million passengers
- 118,557 aircraft movements
- 128 destinations

Paris-Le Bourget

Europe's leading business airport

- 54,646 aircraft movements
- 800 destinations
- 10 airfields and 1 heliport

*Note: 2021 figures. Impact of the COVID pandemic

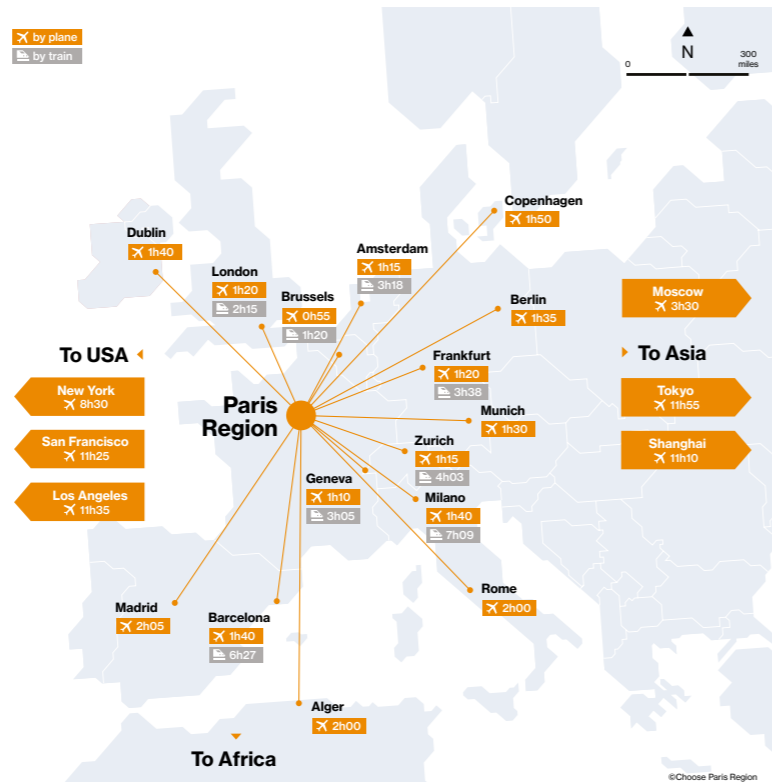
By train

SNCF 2021, Arafer, 2017 and Ile-de-France Mobilités, Eurostar

10
main stations including
7
TGV high-speed train stations

- 5 million passengers on trains in France per day, including 3.5 million in Paris Region (70% of French Traffic)
- 15,000 trains per day in France, 40% of which are in Paris Region
- 5 railway stations have traffic that exceeds 100,000 travellers daily
- Gare du Nord, #1 busiest European station
- 19 million TGV passengers travelling from Paris to other major European destinations
- 24.7 million SNCF inbound passengers to Paris in 2020 (-32.2% compared to 2019)
- 4,700 km of railway tracks, including 636 km of LGV (High Speed Line)

Paris Region, Connected to Europe and the World



2.5M
Eurostar passengers in 2020

A Vast, Multimodal Regional Transport Network

Public transport, bicycles, electric and traditional scooters, self-service vehicles, autonomous cars, buses and automated metros: the local transportation system offers a diverse array of constantly expanding options.

Type of trips	Number of trips / weekday (in million)	Evolution in 2018 (Oct. 2020) (in %)
Walking	16.2	- 4
Car	12.0	- 19
Public transport	6.8	- 28
Bike	1.0	+ 25
Motorized two-wheeled vehicles	0.6	+ 40
Others	0.2	- 11
Total	37	- 13

Ile-de-France Mobilités (09-10/2020)

3.1 billion trips by public transport in Paris Region		
Mode of traffic	Lines	Trips (in billions)
Subway	16	753
Train – RER*	14	263
Streetcars	10	84
Bus / night buses	1,510	207
Total	1,550	1,307

Ile-de-France Mobilités (09-10/2020)
*High-speed metro

A Wide Public Transportation Network, Extended Further by the Grand Paris Express

This largest urban development project in Europe is providing a new transport network. The project involves heavy investments in modernizing and expanding the public transport network.

- 200 km of additional automated metro lines
- 68 new stations
- 2 to 3 million passengers everyday
- €35 Bn invested through 2030
- The project is set to link Paris Region's 3 airports as well as business districts and scientific clusters.
- In total, approximately 1 million m² of floor space will be developed by Société du Grand Paris on the land acquired for the construction of the Grand Paris Express.

Mass Transit in Paris Region

A competitive monthly public transport subscription, at €75.20 in 2022

Ile-de-France Mobilités, 2022

The rail system in Paris Region carries over 2 billion passengers annually.

- Paris Region's mass transit network, #3 in the world behind Tokyo and Seoul, and ahead of Shanghai, London, and New York.
- 23,000 trains, RERs, subways, and trams
- 900 stations and stops
- 1,800 km of lines
- 1 metro every 85 seconds on line 14
- 1 train every 2 minutes on the RER C during rush hour
- The 30 billion kilometers traveled annually by Paris Region's inhabitants thanks to the mass transit network, represent a CO2 emission saving of 4 million tons per year.
- The growing network is still being renovated: 2.5-fold increase between 2015 and 2020
- Almost 5,000 zero-emission buses in dense areas by 2025 and in the rest of the Region by 2029

Ile-de-France Mobilités, 2020

Active Mobility, Bicycles and Electromobility

Walking remains the primary mode of travel for Paris Region's inhabitants followed by car and public transport.

Other modes of innovative and eco-friendly transport, such as bicycles and similar two-wheeled vehicles, are also a growing option.

Velib Metropole, Self-Service Bicycle System

- 20,000 bikes: 60% traditional bicycles, 40% electric power-assisted bicycles
- 1,400 stations in 55 municipalities
- 400,000 subscribers
- 5.5 million trips in september 2020
- 215,000 journeys (record for a single day)

Véligo Location, a Long-Term Rental Service (6 to 9 months) of Electrically Assisted Bikes

- 10,000 Véligo Location bikes
- 500 Electrically Assisted Cargo Bikes

Ile-de-France Mobilités, 2021

Free-Floating Bike Scooter and Moped Operators

- E-bikes: 7,000 in Paris and 550 in the suburbs
- E-Mopeds: around 7,400 in Paris and near suburbs
- E-Scooters: 15,000 in Paris and 1,850 outside Paris
- 1,750 electric cars

Carsharing services in a loop

- Carsharing: 180 cars
- L'Institut Paris Region, Ile-de-France Mobilités, Velib Metropole, Veligo

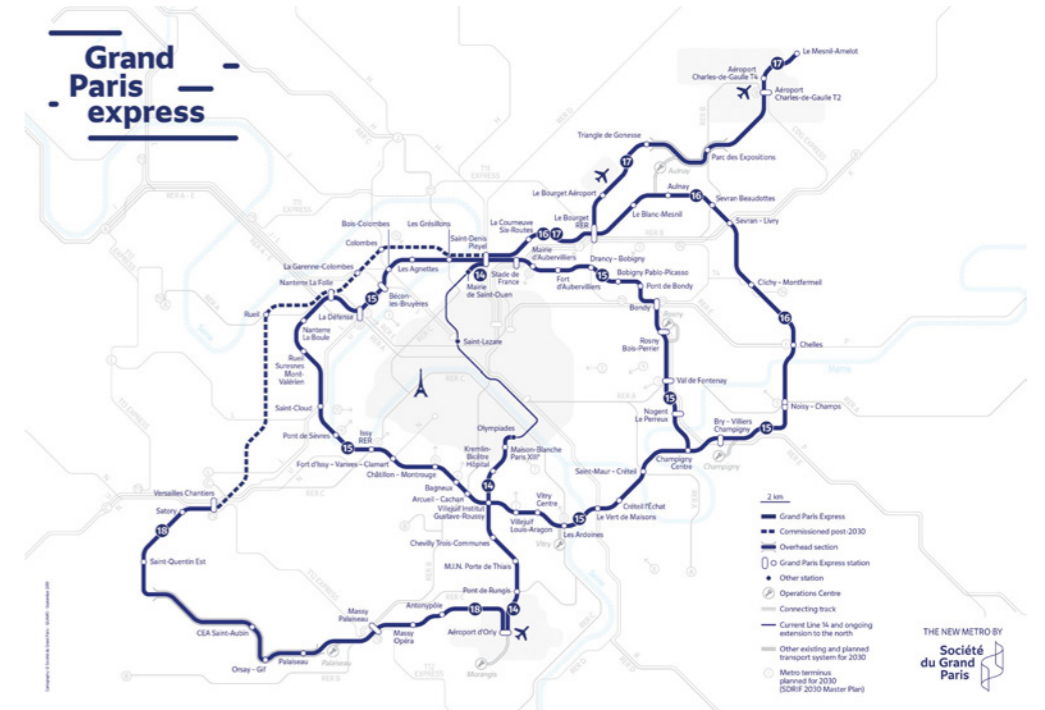
Carpooling

- 900,000 people carpool to work every day
- 272,746 tons of CO2 avoided thanks to carpooling

Ile-de-France Mobilités, 2021

The Grand Paris Express

With the Grand Paris Express and the 200 kilometers of new lines being built, new areas will emerge with good transport connectivity and with more affordable land and real estate prices.



Cost-Effective Logistics

Located at the junction of two of the major European freight corridors, Paris Region is an ideal hub for logistics and shipping. With 12.2 million inhabitants and a catchment area of an estimated 25 million inhabitants within a 200-kilometer radius, Paris Region is the leading importing (27% of imports) and exporting (20% of exports) region in France.

Due to the rapid expansion of e-commerce in the region, the logistics industry is searching for numerous solutions: faster delivery times, the need to shorten the distance between warehouses and end-users, finding available land and warehouses. Innovative businesses are therefore very attractive to key logistics players.



Port de Gennevilliers © HAROPA - Ports de Paris

Significant Capacity in Logistics and Real Estate

- Warehouses > 5,000 m²
- Surface area: 19 million m²
- Amount of land used: 940,000 m²
- Available: 1.1 million m² (as of 1/1/19)

ORIE, 2018, BNP Paribas Real Estate, 2021, data 2020

Paris Region at Very Competitive Logistics Costs

Prime Rents in Q2 2021, €/m ² /year Warehouses over 5,000 m ²	
London (United Kingdom)	194
Oslo (Norway)	134
Helsinki (Finland)	120
Dublin (United Kingdom)	113
Birmingham (United Kingdom)	97
Manchester (United Kingdom)	97
Stockholm (Sweden)	91
Copenhagen (Denmark)	87
Barcelona (Spain)	86
Berlin (Germany)	86
Munich (Germany)	86
Frankfurt (Germany)	84
Vienna (Austria)	82
Hamburg (Germany)	77
Madrid (Spain)	75
Amsterdam (Netherlands)	65
Budapest (Hungary)	60
Prague (Czech Republic)	59
Paris (France)	57
Milan (Italy)	56

European Logistics Market, Q3 2020, BNP Paribas Real Estate, 10/2020

Air, Road, Waterway and Railway Logistics

Paris Region generates between 210 and 230 million tons of goods each year. Road transport accounts for the vast majority of goods transported, i.e. 91% of tonnage, river transport 7% and rail transport 2%. The flows that concern Paris Region are both national and international. In particular, consumer goods, which are largely imported by container, arrive in Paris Region along two major corridors, one of which is exclusively road-based and is structured by the port of Antwerp, and the other, which is already multimodal, is structured by the port of Le Havre.

Paris CDG Airport
#1
Europe's
#1
for Cargo

Air

- 2.25 million tons of freight and mail handled
- 3.9 million tons of cargo capacity (both airports)
- 80 stands for Cargo aircraft at Paris-Charles de Gaulle
- 338 cities served worldwide
- European capitals and major cities within a 2-hour flight
- About 90% of total volume of air freight is handled at Paris-CDG and Orly airports

Aéroports de Paris, data 2019-2020

Road network

- 12,000 km of roads, including 497 km of national roads and 620 km of highways
- Freight 178 million metric tons of goods

SDES 2018, Eurostat, 2019

#1
French river port

#2
Europe's river port

Waterway

- 70 urban ports, including 6 multimodal platforms
- 500 km of navigable waterways
- 1,000 ha of port areas
- 6 container terminals
- Waterway: 23 million metric tons of goods
- 141,000 TEUs were handled
- 1 million m² of warehouse space

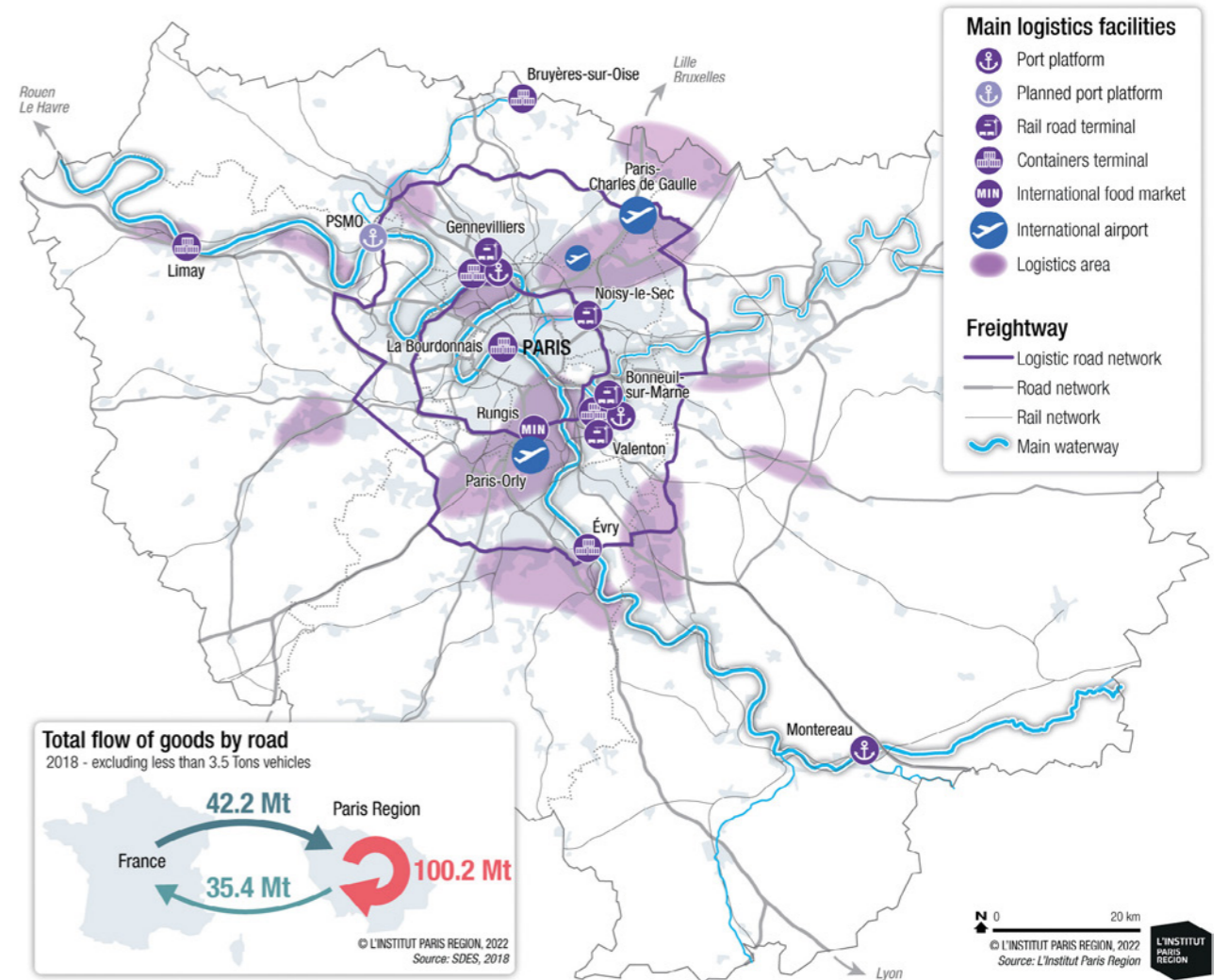
Haropa, 2021, data 2020

Rail freight

- 10 million metric tons of goods by rail, including 1.8 million through Paris Region ports
- 4 rail/road terminals
- Valenton #1 Rail/Road terminal in France
- Railway activity Materials: 4.3 million metric tons

Setra, Haropa 2020, Unicem, 2018

Logistics in Paris Region (2022)



Flow of Goods Through Main Ports in Paris Region			
	Waterway (thousand tons of goods)	Containers (TEUs*)	Railway (thousand tons of goods)
Gennevilliers	3,183	100,719	804
Limay	951	4,377	359
Bonneuil-sur-Marne	1,366	16,968	564
Bruyères-sur-Oise	325	361	0
Evry	403	0	0
Précy-sur-Marne	42	2,968	not connected to rail
Paris-La Bourdonnais	81	15,431	not connected to rail

* Twenty-Foot Equivalent Units - Haropa-Port de Paris, 2021 data 2020

An Exceptional Place for Events

Paris Region holds a unique position as a leading destination in both leisure and business tourism. Over 600 business events were held in the region in 2020, and this appeal lies in the advanced hotel and catering facilities as well as its state-of-the-art venues. With approximately 700,000 m² of floor space, it offers the richest and most varied range of reception facilities for business events in Europe.



© Vivatech

A Real Know-How in Hosting Major Trade Shows

CCI Paris Ile-de-France, data 2020

- 700,000 m²**
The #1 offer of exhibition space in the world
- 21**
exhibition and conference venues
- 128**
trade shows
- 498**
conventions
- €1.8 Bn**
in economic benefits

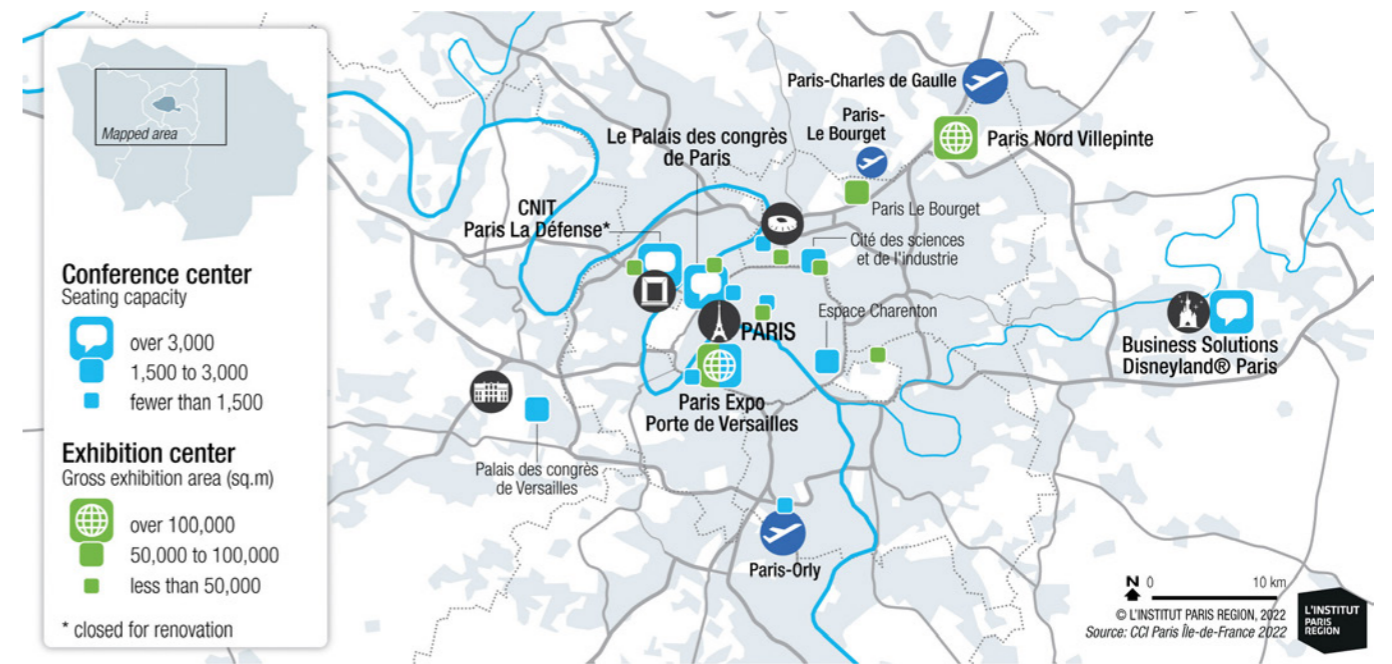
- **1.8 million** visitors, including
- **176,000** foreigners (9.8%)
- **30,300** exhibiting companies
- **€5.8 Bn** turnover by exhibiting companies at trade shows

The health crisis had a major effect on the congress and trade show sector in 2020. The data presented accounts for congresses held in Paris Region or due to be held there. This data is non-exhaustive, data collection having been made difficult by the health crisis situation.
OTCP 2020

Top 10 Professional and Public Trade Shows Held in Paris Region (by Number of Visitors and Exhibiting Companies)				
Trade Show Name	Business sector	Visitors (1 st visit)	Exhibiting companies	Year
Mondial de l'Automobile / Paris Motor Show	Transport, logistics, traffic and related equipment	1,068,194	500	2018
Salon International de l'Agriculture / Paris International Agricultural Show	Agriculture, horticulture, livestock farming, floristry, fishing and related equipment	597,683	967	2019
Foire internationale de Paris / Paris International Fair	Multi-sector tradeshows and trade fairs	485,588	2,023	2019
SIAE Salon International de l'Aéronautique et de l'Espace / International Paris Air Show	Defence, civil and military security	248,512	2,492	2019
Paris Game Week	Tourism, sports and leisure activities	218,312	164	2019
Maison&Objet	Home decor, interior design, architecture and lifestyle culture	159,273	5,563	2019
Salon Nautique International de Paris / Paris Boat Show	Tourism, sports and leisure activities	147,500	645	2019
Rétromobile	Antiques, collections, flea markets	118,192	615	2020
Salon des vins et des vignerons indépendants / independent winemakers' wine fair	Food, hotel and restaurant amenities	112,911	947	2019
Salon du Livre / Paris Book Fair	Food, hotel and restaurant amenities	107,284	906	2019

CCI Paris Ile-de-France, UNIMEV, CJS, Organizer's declaration

Conference and Exhibition Centers in Paris Region (2022)



The Place to Meet

The Paris Convention Center, the largest convention center in Europe, features made-to-measure spaces for large-scale international conferences 15 minutes from the Eiffel Tower, in the heart of the Paris Expo Porte de Versailles Park. It can accommodate up to 35,000 people in gigantic, fully modular spaces.

Paris is #1 in the World's Leading Destinations by Number of Meetings Organized in 2019		
City	# of meetings	Rank by # of meetings
Paris	237	1
Lisbon	190	2
Berlin	176	3
Barcelona	156	4
Madrid	154	5
Vienna	149	6
Singapore	148	7
London	143	8
Prague	138	9
Tokyo	131	10

ICCA 2020, City ranking measured by number of meetings organized in 2019

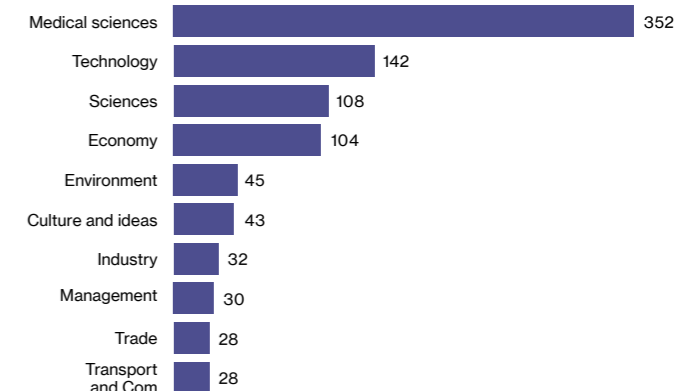
Paris, the World's #2 Leading Destinations by Number of Participants in Meetings Organized in 2019		
City	# of participants	Rank by # of participants
Barcelona	156,754	1
Paris	124,063	2
Madrid	91,900	3
Lisbon	91,406	4
Vienna	89,009	5
Berlin	85,089	6
London	76,114	7
Milan	71,554	8
Copenhagen	69,110	9
Amsterdam	67,962	10

ICCA 2020, City ranking measured by number of participants in meetings organized in 2019

Usually Over 1,000 Congresses per Year in Paris Region OTCP, 2020

- **498** congresses held, in over **200** venues
- **370** phygital or by video conferencing congresses
- **128** in-person congresses
- **160** postponed congresses
- **157** cancelled congresses
- **215,000** delegates who attended a hybrid or an in-person congress

Top 10 Sectors of Activity for Congresses



OTCP, 2019

The Finest Lifestyle

A top business destination, Paris Region also offers an unbeatable and affordable quality of life. Culture, architecture, history, parks, gastronomy, shopping, sports, the list goes on. Paris Region is an exceptional place to live and thrive. Home to 18% of France's population on only 2% of the national territory, Paris Region aims to offer its citizens a breathable and greener environment through sustainable and carbon-free urban planning.



© Saint-Germain-en-Laye - CRT IDF Tripelon-Jarry

A Great Place to Live in

- 5.2 million housing units
 - 71% apartments
 - 3.7 million houses
 - 27% houses
 - 1.4 million
- Insee, 06/2021, data 2018

Private Housing Rents in Paris Region				
	Paris	Inner suburbs	Outer suburbs	Paris Region
Surface in m ²	50	54	56	54
Rent in €/m ²	24	17	14	18.2
Average monthly rent in €	1,192	903	1,073	975

OLAP 2021, data 2020

A Green Region

76% green space and forests

- 50% agricultural space
- 26% wooded areas, natural world
- 23% urban space
- 1% water
- 4 regional nature parks representing 19% of the land area (226,192 ha), 1 in project
- 120,272 ha of green spaces open to the public in 2019 (community gardens, heritage parks and gardens, recreational areas, parks, squares, ...).
- 4,731 km of linear green spaces (promenades, banks, green corridors...)
- 35 "Natura 2000" sites
- 15,000 km of ecological corridors
- 275 sites identified for their geological interest
- 29,770 ha in organic farming
- Short food circuits are in place for 800 farms (16%)
- 97,838 ha of forest open to the public
- 115 sustainable neighborhoods in Paris Region
- 156,700 homes programmed within these accredited neighborhoods
- A very high level of urban services (water, waste, energy...)

L'Institut Paris Region, 02/2021

The Region has a temperate Atlantic climate with some semi-continental influences. Temperatures are characterized by a relative mildness and regularity, around 11°C on average. The 650 mm of annual precipitation is very well distributed throughout the year while winds are generally weak.

An Unrivalled Cultural Offering

- 310 cinemas
- 1,183 screens
- 354 theaters
- 158 academies
- 1,009 public libraries
- 5 opera houses
- 55 foreign cultural institutes and centers (FICEP)
- 15.1 million visitors in the top 20 cultural sites in Paris*
- 3 of the Top 20 most visited exhibitions in Europe
- 6.3 million visitors attending the 10 largest exhibitions in Paris in 2019
- 1/3 of the regional territory is remarkable for its built and landscape heritage
- 271 villages of character

Insee 07/2021, data 2020, FICEP 2022, CRT Paris Ile-de-France 07/2021, data 2019, 2020 *between 2014 and 2019

143 Museums

A Population in Good Health

Paris Region has the largest hospital system in Europe and the French health care system consists of a fully integrated network of public hospitals, private clinics, doctors and other health care providers. It is unique in the world as it is universal. Everyone receives the same high-level of care and treatment regardless of income. Contributions are paid through social security contributions deducted from salaries. Since 1990, the health status of Paris Region's inhabitants has improved: life expectancy at birth has increased and general, premature and infant mortality has decreased.

Practitioners in Paris Region						
Total	Density for 100,000 inhabitants					
Practitioners	Practitioners	General practitioners	Specialists	Dental Surgeons	State-certified nurses	Drugstores
48,236	396	145	251	73	936	113

INSEE 2020, data 2018

5 UNESCO Sites (2021)

- Palace and Park of Versailles
- Paris, Banks of the Seine
- Palace and Park of Fontainebleau
- Provins, Town of Medieval Fairs
- Le Corbusier's architectural work

4,000 historic monuments

Tripadvisor 2022

Inspiring

Paris Region is a popular setting for the shooting of French and international films, series, and commercials

Iconic Tourist Attractions

Most Visited Tourist Sites in Paris Region (millions of visitors - 2020)	
Disneyland Paris	2,620,000
Louvre Museum	2,697,584
Palace of Versailles	2,000,000
Eiffel Tower	1,559,200
Pompidou Center	912,803
National Natural History Museum	879,203
Orsay Museum	867,274
Cité des Sciences et de l'Industrie	643,828
Zoological Park of Thoiry	485,816
Quai Branly Museum	438,813
Grand Palais	437,786
Arc de Triomphe	428,571
Atelier des Lumières	407,774

CRT Paris Ile-de-France, 2021, data 2020

#1 The Louvre
Most Visited Museum in the World

TEA / AECOM, 2020

4 of the EMEA's Most Visited Museums
The Louvre
Centre Pompidou
Musée d'Orsay
Cité des Sciences et de l'Industrie

TEA / AECOM, 2020

Top Cultural Events in Paris Region (By Number of Visitors between 2014 and 2019)

Toutânkhamon (2019), La Villette	1,423,170
Van Gogh. La nuit étoilée (2019), Atelier des Lumières	1,392,313
Icônes de l'art moderne. Collection Chtchoukine (2016), Louis Vuitton Foundation	1,205,063
Gustav Klimt (2018), Atelier des Lumières	1,204,000
Être moderne : le MoMA à Paris (2017), Louis Vuitton Foundation	755,184
Christian Dior, couturier du rêve (2017), Musée des Arts Décoratifs	708,000
Tatoueurs, tatoués (2014), Quai Branly Museum	702,138
Basquiat-Schiele (2018), Louis Vuitton Foundation	676,503
Picasso. Bleu et rose (2018), Orsay Museum	670,667
Van Gogh/Artaud (2014), Orsay Museum	654,291
Jeff Koons, la rétrospective (2014), Pompidou Center	650,045
David Hockney (2017), Pompidou Center	620,945
Corps et sport (2018), Cité des sciences et de l'industrie	610,000
René Magritte, la trahison des images (2016), Pompidou Center	597,390
Niki de Saint Phalle (2014), Grand Palais	588,730

CRT Paris Ile-de-France, 07/2021

The World's Favorite Tourist Destination

- 17.4 million tourists, including 5.1 million international visitors (29.3%)
- 66.1 million overnight stays, including 25.8 million for international tourists (39%)
- €6 Bn in economic benefits, including €2.7 Bn from international tourists (45%)
- 36,376 businesses (private sector)
- 294,607 jobs (private sector)

CRT Paris Ile-de-France, 2021, data 2020, URSAFF 12/2021 data 2021

One of the Largest Hotel Facilities in the World

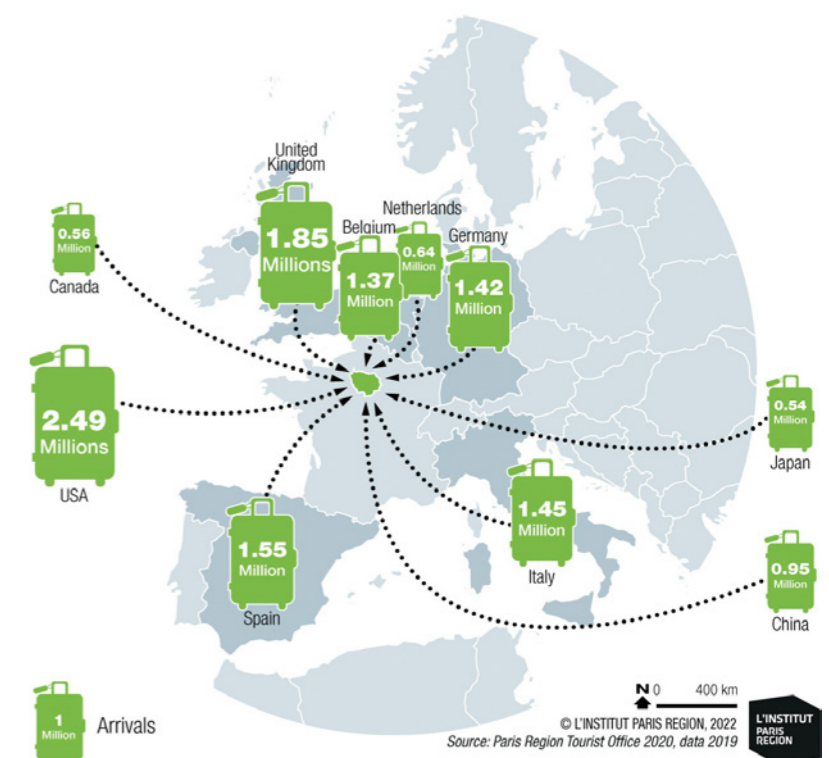
- 158,661 rooms
- 22.7 million overnight stays in hotels
- 2,446 hotels
- 12 luxury hotels

CRT Paris Ile-de-France, 2021, data 2020, Atout France 2022, Insee, data 2021

Number and capacity of hotels in Paris Region as of January 1, 2021		
	Hotels	Rooms
Total	2,446	158,661
1-star	35	1,499
2-star	318	19,563
3-star	986	56,667
4-star	574	52,932
5-star	99	9,244
Non-classified	434	18,756

INSEE-Partenaires territoriaux as of 01/01/2021

Origins of Paris Region's Main International Tourists (2019)



Source: Paris Region Tourist Office 2020, data 2019

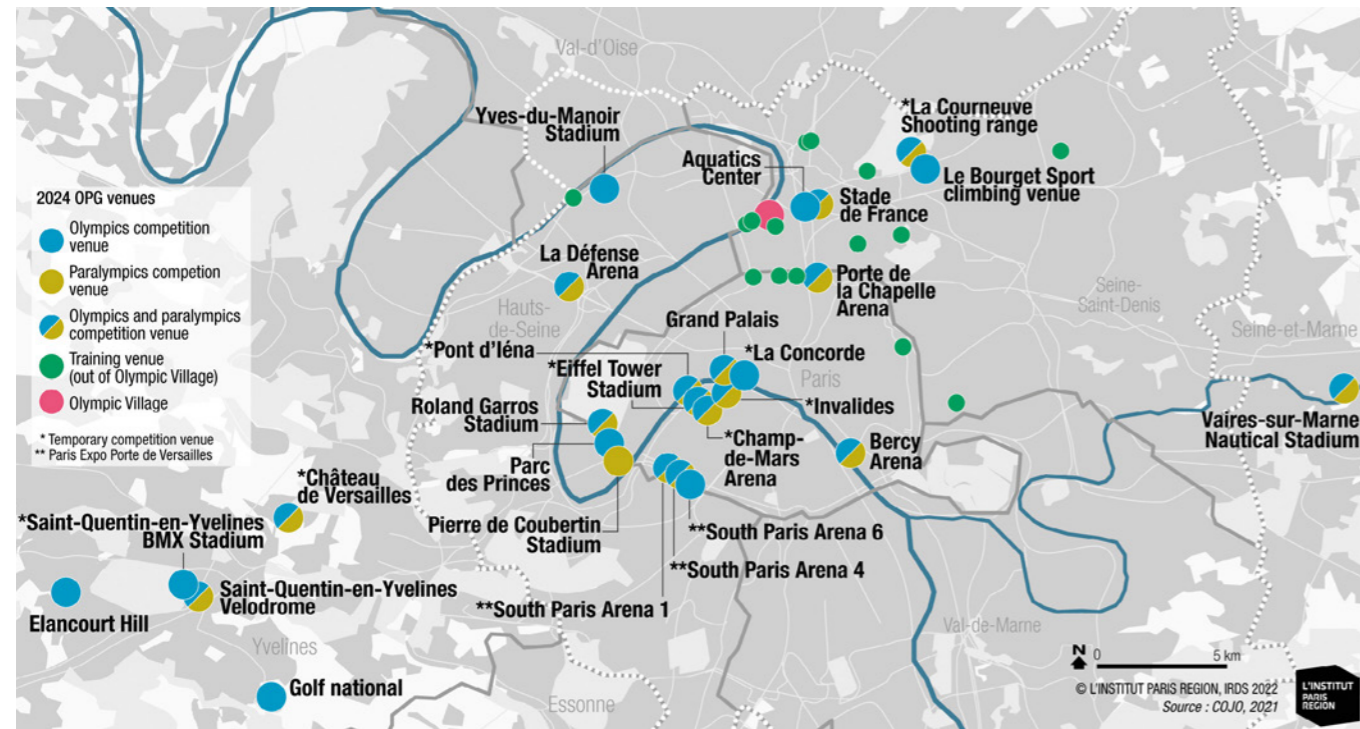
The main international visitors in Paris Region were:

- | | |
|-----------------------|---------------------|
| Between 2014 and 2019 | In 2020 |
| Americans: 10% | British: 18% |
| British: 10% | Belgian: 15% |
| Spanish: 7% | Germans: 13% |
| Italians: 7% | Dutch: 10% |
| Germans: 6% | Spanish: 6% |

International customers accounted for 25.8 million of tourist stays in 2020.

CRT Paris Ile-de-France, 2021, data 2020

2024 Olympic Sites in Paris Region



Sports and Leisure Activities

- 19,310 sports clubs
- 2.4 million sports club members
- 5,307 tennis courts
- 691 swimming pools
- 391 equestrian centers
- 1,413 riding arenas
- 302 golf courses
- Soccer: 270,180 licenses
- Tennis: 224,750 licenses
- Judo: 100,560 licenses
- Golf: 96,650 licenses
- Riding: 86,210 licenses
- 12 leisure resorts
- 4,909 parks and gardens
- 7,510 km of hiking trails
- 2,120 km of mixed roads or greenways for bicycling
- 13 swimmable lakes
- 1,140 km of authorized shipping lanes
- 99,960 ha of woods and forests open to the public
- 1,024 sites for the practice of nature sports: horseback riding, golf, climbing, tree climbing, etc.

Injep-MEDES / Recensement des licences sportives 2020 / Recensement des équipements sportifs 2020

IRDS 12/21, data 2021, BEV 2020

Some Popular Sporting Events

- Tour de France (cycling race): 545,000 spectators
- Paris Open, Roland-Garros (Tennis): 520,000 spectators
- Women's soccer world cup: 250,000 spectators
- NatWest 6 Nations championship (rugby): 150,000 spectators Paris
- Schneider Electric Paris Marathon: 60,000 participants 250,000 spectators
- NatWest 6 Nations, 5/02-19/03 2022
- Finalstage of Tour de France (cycling race), 24/07/2022
- Softball, Women's European Cup Winners Cup B, 15-20/08/2022
- The Golf World Championship (World Team Championship), 25/08-4/09/2022
- World Track Cycling Championship, 12-16/10/2022
- Rugby Union World Cup, 08/09-28/10/2023
- World Para-Athletics (WPA), 8-17/07/2023

CRT Paris-Ile-de-France, 2020

Top Events to Come in 2022-23

- Schneider Electric Paris Marathon, 3/04/2022
- Paris Open, Roland-Garros, 22/05-5/06/2022

Paris 2024 Olympic and Paralympic Games

Olympic Games
July 26th - August 11th, 2024

Paralympic Games
August 28th - Sept. 8th, 2024

Paris 2024 in Figures

- 10,500 athletes
- 40 competition sites
- 339 events
- 206 nations
- 28 sports (+ 4 additional sports)
- 9.7 million spectators
- 31,500 volunteers
- 4 billion viewers
- 350,000 hours of broadcasting

Venues

- 95% existing or temporary venues
- 14 exceptional sites, with 24 Olympic sports (out of 32) located within 10 km of the Village.
- 2 new venues to be built: the Olympic and Paralympic Village, and the Aquatics Center
- 90,000 hotel rooms within 10 km of the city center

Paris2024 media

Sustainable

- 55% smaller carbon footprint than London 2012

The World Capital for Shopping

(2019, 2021)

Paris is the international capital of fashion and creation. Between luxury houses, department stores, designers' trends, concept stores and outlets, Paris Region is a popular shopping destination for French and foreign tourists.

- 218 shopping centers, including Westfield Les Quatre Temps, Westfield Forum des Halles, Vill'Up, the Carrousel du Louvre, Beaugrenelle, Bercy Village, La Vallée Village.
- 17 major department stores: Galeries Lafayette, Printemps, Le Bon Marché, BHV Marais...

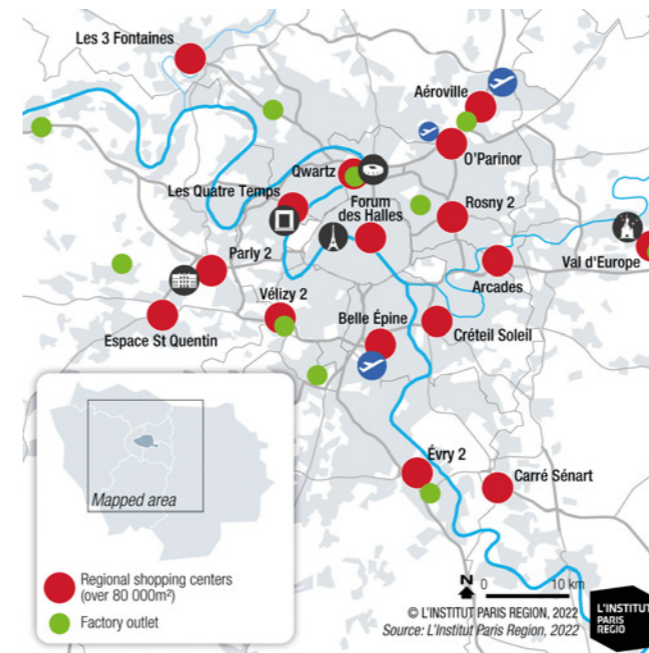
Westfield Forum des Halles (Paris)

#1
European Shopping destination

53.8M
visitors in 2019

Sites commerciaux n°302, October 2020
Panorama/Tradedimensions, Panoweb 2021 and L'Institut Paris Region

Paris Region Major Shopping Centers (2022)



© Westfield Forum des Halles

A Unique Culinary Destination

(2021)

Paris Region is home to the Rungis National Interest Market (MIN), which is the largest food market in the world. It accounts for nearly two-thirds of the wholesale market activity in France. As the largest food consumption area in France, Paris Region has 12.3 million inhabitants and welcomes 50 million tourists every year.

Rungis International Market, the world's biggest fresh products market

- €10 Bn euros turnover
- 18 million consumers
- 1,150 companies
- 5,975,000 visitors
- 1.7 million tons of goods pass through every year with around 300,000 references of fresh food products.

5,600 m²
the largest organic market in Europe

Rungis, 06/2021, data 2020

Paris Region is the leading French region for the production of watercress and parsley. It ranks 2nd for white onions, 3rd for broad beans, industrial beets, fibre flax.

Chambre d'Agriculture d'Ile-de-France, 2021

An Effervescent Gastronomy Scene

Paris Region is home to an effervescent gastronomy scene with 28,120 restaurants, exceptional chefs, hotspots, international specialties, Parisian cafes, organic cafes, street food trucks, markets... there is something to suit all!

28,120
Restaurants

URSAFF, 12/21, data 2020

Specialities Produced in Paris Region

3,000 regional products bear the signature of the "Produit en Île-de-France" (produced in Paris Region) brand.

Paris Region is one of France's major agricultural areas and the leading food-producing region in France. The region has many emblematic products resulting from local agricultural and artisanal know-how.

Many culinary products are named after more than 70 different towns of Paris Region, for example:

- Asparagus from Argenteuil
- Baguette, Ham, Mushrooms, Strawberries ... from Paris
- Beans from Arpajon,
- Beer from Brie, Gâtinais, Vexin
- Brie from Meaux, Melun, Montereau, Nangis, Provins
- Cabbages from Pontoise
- Cherries from Montmorency
- Honey and Saffron from Gâtinais,
- Potatoes Belle de Fontenay
- Roses from Provins
- Peaches from Montreuil
- Peppermint from Milly-la-Forêt
- Poppies from Nemours
- Watercress from Méréville...

124

Michelin-starred restaurants, incl.

9***

11**

104*



Copyrights of pictures from left to right and top to bottom:
 Ecole Centrale, Saclay © Carlos-Ayesta
 La Seine Musicale, Boulogne-Billancourt © Adobestock
 Bourse de Commerce – Pinault Collection © Tadao Ando
 Architect & Associates, Ninety et Marca Architectes, Agence
 Pierre-Antoine Gatier - Photo Vladimir Partalo
 Paris CDG Airport © Aéroport de Paris – Burtot
 Stade de France © Jean-Michel Sicot – L'Institut Paris Region
 Charenton-le-Pont - Iry-sur-Seine © Paris-Est-Marne et Bois
 Axe majeur de Cergy - Val d'Oise
 Ariane Group © Département des Yvelines

L'INSTITUT PARIS REGION

URBAN PLANNING AND
ENVIRONMENTAL AGENCY

URBAN PLANNING
CULTURE & HERITAGE
INNOVATION
METABOLISM
CLIMATE
BIODIVERSITY
MOBILITY
ECONOMY



<https://en.institutparisregion.fr>



Please do not hesitate to send us your comments and suggestions to improve this new edition: prff@chooseparisregion.org
 We thank all the organizations and individuals from whom we retrieved the data used in producing this document: 2thinknow, ACI, APUR, ARCEP, Arafer, ARWU, ASTech, AT, Kearney, Atomico, BNP Paribas Real Estate, Cable.co.uk, Cap Digital, CBRE, CEOWorld Magazine, Chambre d'Agriculture d'Ile-de-France, Choise Paris Region, Colliers International, Paris Ile-de-France CCI, Cité internationale universitaire de Paris, CJS, Cosmetic Valley, Cornell University, CRT Paris Ile-de-France, Cushman & Wakefield, Diane, ECA International, Educsof, Elsevier/Scopus, Erasmus, European Startups, Eurostat, Expatistan, EY-UJI Index, Ficap, fdi Intelligence and the TNW (The Next Web), Finance Innovation, Financial Times, FNAK, Fortune Magazine, French Customs, Gobelins, Guide Michelin, Haropa - Ports de Paris, HEC, Hceres, ICCA, Ile-de-France Mobilités, Ile-de-France Region, Ile-de-France Terre de Saveurs, Immostat, INJEP-MERES, INPI, INSEAD, INSEE, International Animation School Ranking, IRDS, JLL, KPMG, Le Coût de l'Expat, L'Institut Paris Region, Medicen, Mercer, Mori Memorial's Foundation's Institute for Urban strategies, Ministry of Education, Higher Education and Research, Next Move, OJS, OLAP, OMPI, ORIE, OST, OTCP (Paris Convention and Visitors Bureau), Panorama/tradedimensions, Paris2024 media, Paris Aéroport, Paris Ile-de-France Capitale Economique, Polymeris, PWC, RATP, Reuters, Rungis, Savills, Schroders, SETRA, Sites commerciaux, SNCF, Société du Grand Paris, Station F, Startup Blink, Systematic, Unesco, Unicem, UNIMEV, Velib Metropole, WIPO.

Editorial Board: Paris Region Facts and Figures 2022
 Choise Paris Region: Pauline Degaudenzi, Florence Humbert, Stéphanie Rimbart, Joël Dacus
 L'Institut Paris Region: Vincent Gollain, Christine Tarquis
 Paris Ile-de-France Regional Chamber of Commerce and Industry: Yves Burfin, Isabelle Savelli, Julien Tuillier
 Maps: Pascale Guéry, L'Institut Paris Region
 Graphic design: Choise Paris Region
 Printed in March 2022, France
 Printer: Merico
 © Choise Paris Region
 © L'Institut Paris Region
 © Paris Ile-de-France CCI
 ISSN: 1958-1270

L'Institut Paris Region - January 2020 - Picture : Stefano Borghi - www.stefanoborghi.com



Crédit photo AdobeStock

Expanding your network, boosting growth with Paris Ile-de-France Regional Chamber of Commerce and Industry

Are you a foreign company?
Are you looking for potential business partners
on the French market?



Doing Business
in Paris

is at your service
international.cci-paris-idf.fr



CCI PARIS ILE-DE-FRANCE
INTERNATIONAL



01 55 65 44 44 | Prix d'un
appel local

Du lundi au vendredi de 9H00 à 17H30



The One-Stop-Shop For Paris Region

Work with us to access all local players and enjoy your
expansion in the most thriving European region!



chooseparisregion.org

contact@chooseparisregion.org



ChooseParisRegion



parisregion



ChooseParisRegion



@ChooseParisReg



Contact us at
contact@chooseparisregion.org

Visit our website at
chooseparisregion.org



Contact us at
info@institutparisregion.fr

Visit our website at
en.institutparisregion.fr



Contact us at
crocis@cci-paris-idf.fr

Visit our website at
crocis.cci-paris-idf.fr