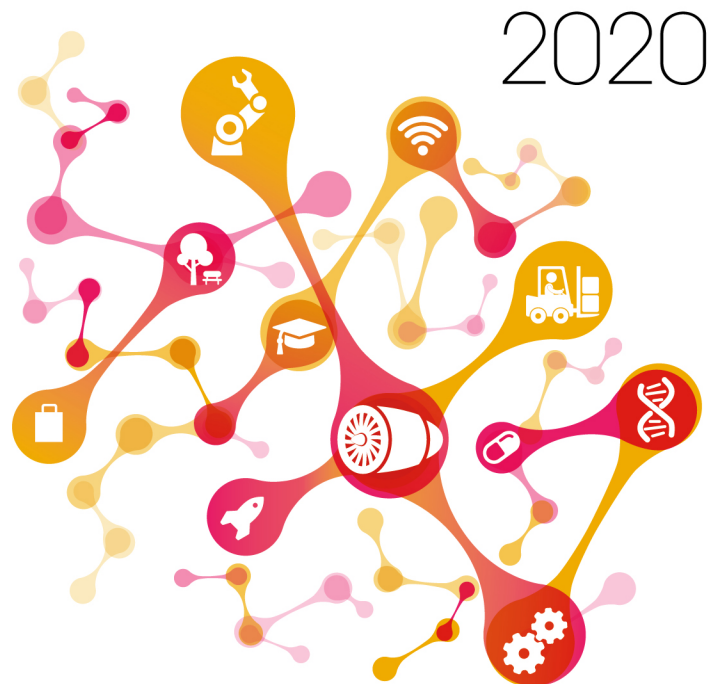
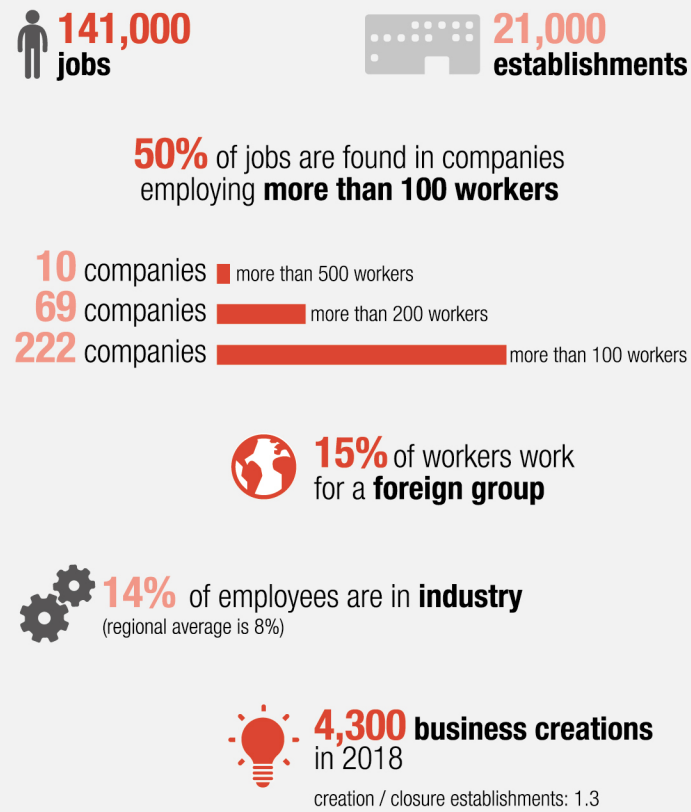


KEY FIGURES GRAND PARIS SUD SEINE-ESSONNE-SÉNART



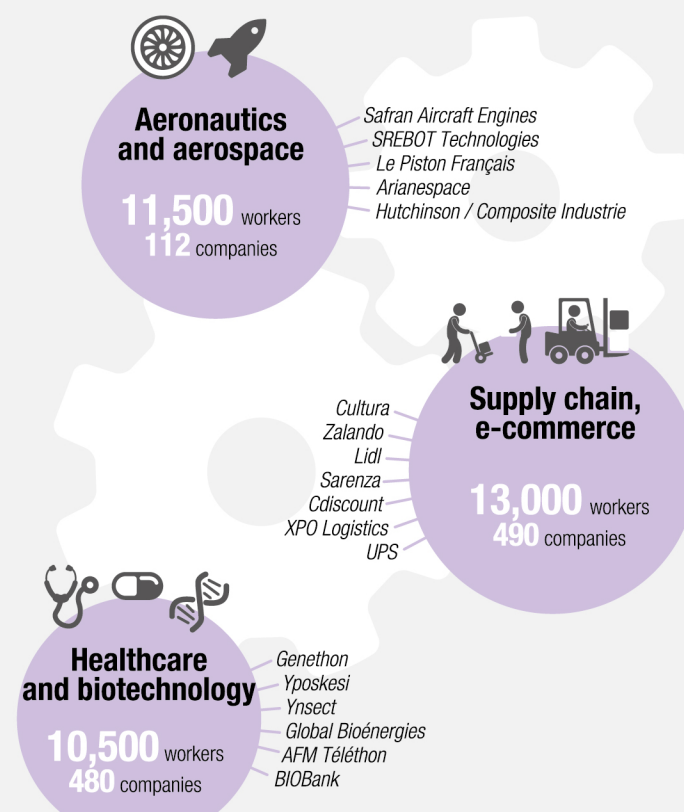
2020

ECONOMY



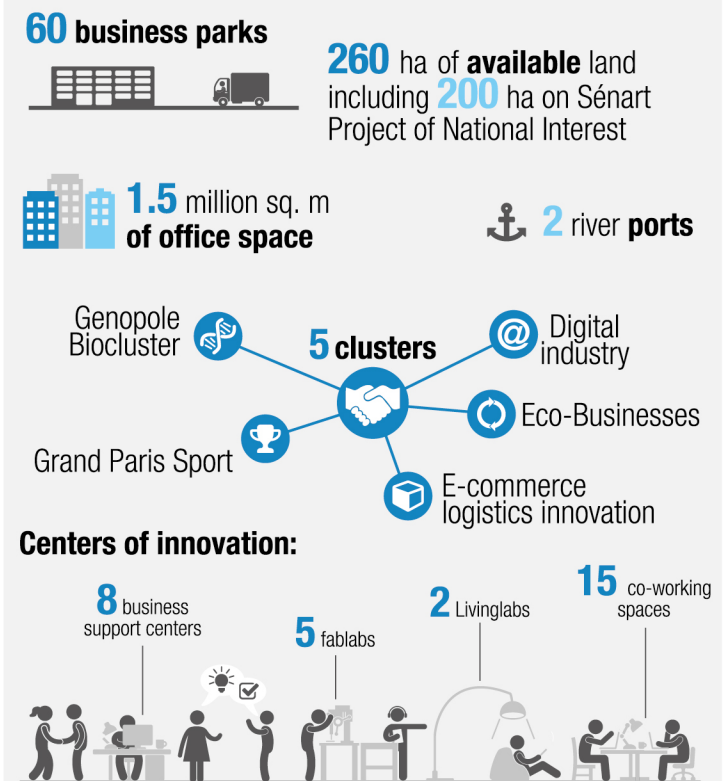
Sources: Insee RP 2015 ; REE 2015 ; Clap 2015

KEY INDUSTRIES



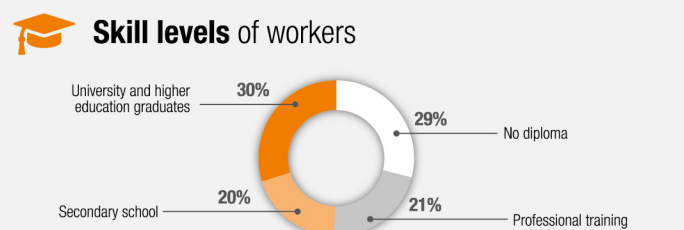
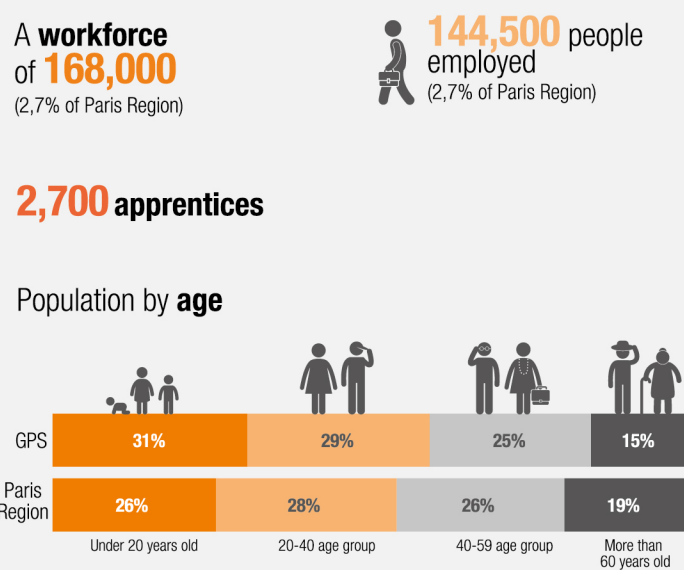
Sources: Acoess 2018 ; L'Institut Paris Region

REAL ESTATE OFFER



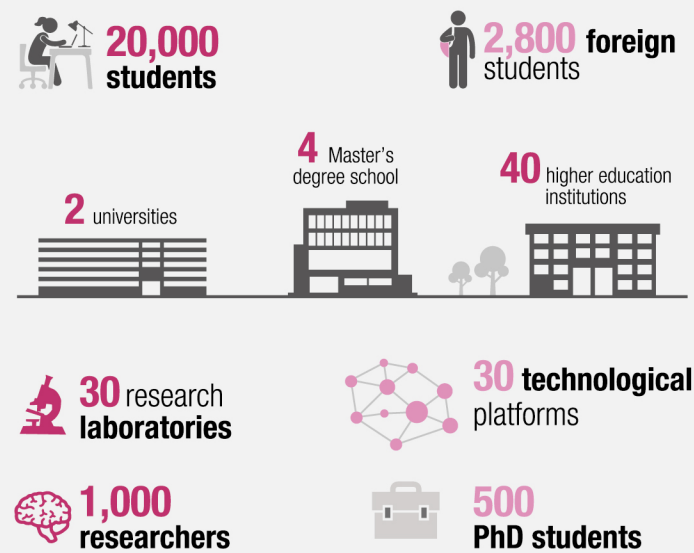
Sources: Grand Paris Sud Seine Essonne Sénart ; EPA Sénart

WORKFORCE



Sources: Insee RP 2015 ; Région Île-de-France

EDUCATION, SCIENCES & TECHNOLOGIES



South Paris Region **Medical Center**
1,100 beds

Competitiveness
Medicen Paris Region

Sources: Atlas des effectifs étudiants, Grand Paris Sud Seine Essonne Sénart ; EPA Sénart

QUALITY OF LIFE

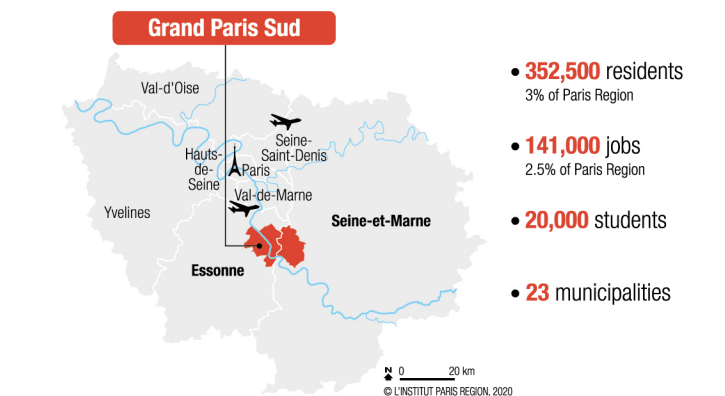


138,000 housing units
 16,000 will be built between 2020 and 2025

5 shopping centers

Sources: Grand Paris Sud Seine Essonne Sénart ; EPA Sénart ; L'Institut Paris Region

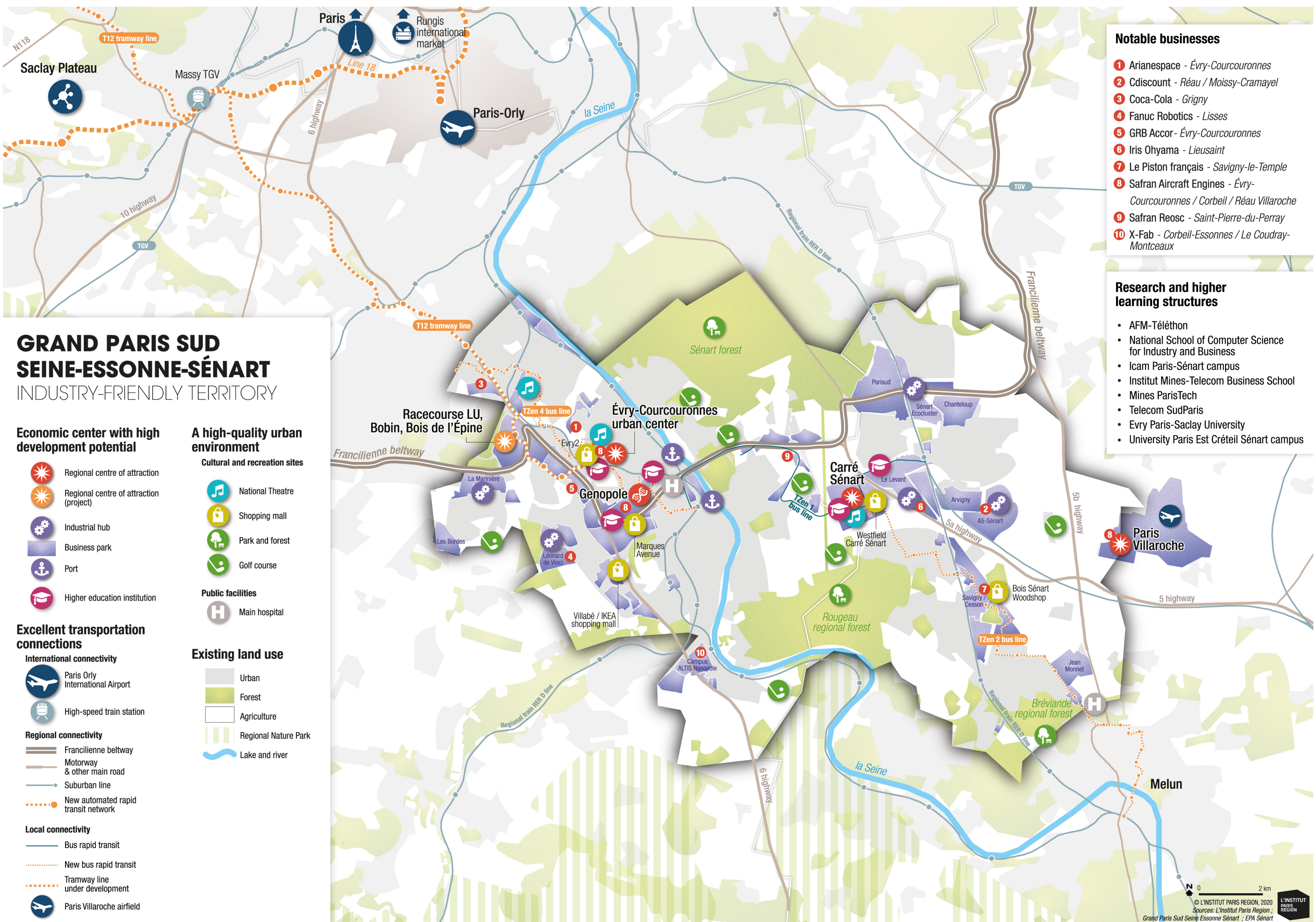
pictogrammes © 123rf / lemercy, © L'INSTITUT PARIS REGION, 2020



Located at the crossroads of the main road and rail routes in the south of the Paris Île-de-France region, Greater Paris South is a conurbation made up of 23 municipalities. In terms of population, it is the third largest area in the Paris region with over 350,000 inhabitants. As part of the development of the Greater Paris metropolitan area, Greater Paris South has some major strengths: a scarce but well-developed supply of land; sectors of excellence that have turned Greater Paris South into Europe's top Healthcare and Innovation hub; a leader in the aerospace sector; a benchmark in digital technology and robotics; a well-preserved living environment; and a young and active labour pool.

EPA Sénart urban development corporation is one of the two main developers of the South Greater Paris area: its mission is town and country planning in cooperation with public and private sector partners. The support provided by EPA Sénart accelerates the location and relocation of businesses, enables lead times to be met, while keeping operational risks under control with optimal results. The sustainability of a diversified supply of homes and the development of eco-neighbourhoods, public amenities and spaces are ensured to achieve a balanced and harmonious urban development. This forms part of a responsible and sustainable approach to the Greater Paris South agglomeration.

Technical coordination: L'Institut Paris Region / Renaud Roger
 Graphic design: L'Institut Paris Region / Pascale Guery
 ISBN Registration: pending



GRAND PARIS SUD SEINE-ESSONNE-SÉNART

INDUSTRY-FRIENDLY TERRITORY

Economic center with high development potential

- Regional centre of attraction
- Regional centre of attraction (project)
- Industrial hub
- Business park
- Port
- Higher education institution

Excellent transportation connections

- International connectivity**
- Paris Orly International Airport
 - High-speed train station
- Regional connectivity**
- Francilienne beltway
 - Motorway & other main road
 - Suburban line
 - New automated rapid transit network
- Local connectivity**
- Bus rapid transit
 - New bus rapid transit
 - Tramway line under development
 - Paris Villaroche airfield

A high-quality urban environment

- Cultural and recreation sites**
- National Theatre
 - Shopping mall
 - Park and forest
 - Golf course
- Public facilities**
- Main hospital

Existing land use

- Urban
- Forest
- Agriculture
- Regional Nature Park
- Lake and river

Notable businesses

- 1 Arianespace - Évry-Courcouronnes
- 2 Cdiscount - Réau / Moissy-Cramayel
- 3 Coca-Cola - Grigny
- 4 Fanuc Robotics - Lisses
- 5 GRB Accor - Évry-Courcouronnes
- 6 Iris Ohyama - Lieusaint
- 7 Le Piston français - Savigny-le-Temple
- 8 Safran Aircraft Engines - Évry-Courcouronnes / Corbeil / Réau Villaroche
- 9 Safran Reosc - Saint-Pierre-du-Perray
- 10 X-Fab - Corbeil-Essonnes / Le Coudray-Montceaux

Research and higher learning structures

- AFM-Téléthon
- National School of Computer Science for Industry and Business
- Icam Paris-Sénart campus
- Institut Mines-Telecom Business School
- Mines ParisTech
- Telecom SudParis
- Evry Paris-Saclay University
- University Paris Est Créteil Sénart campus