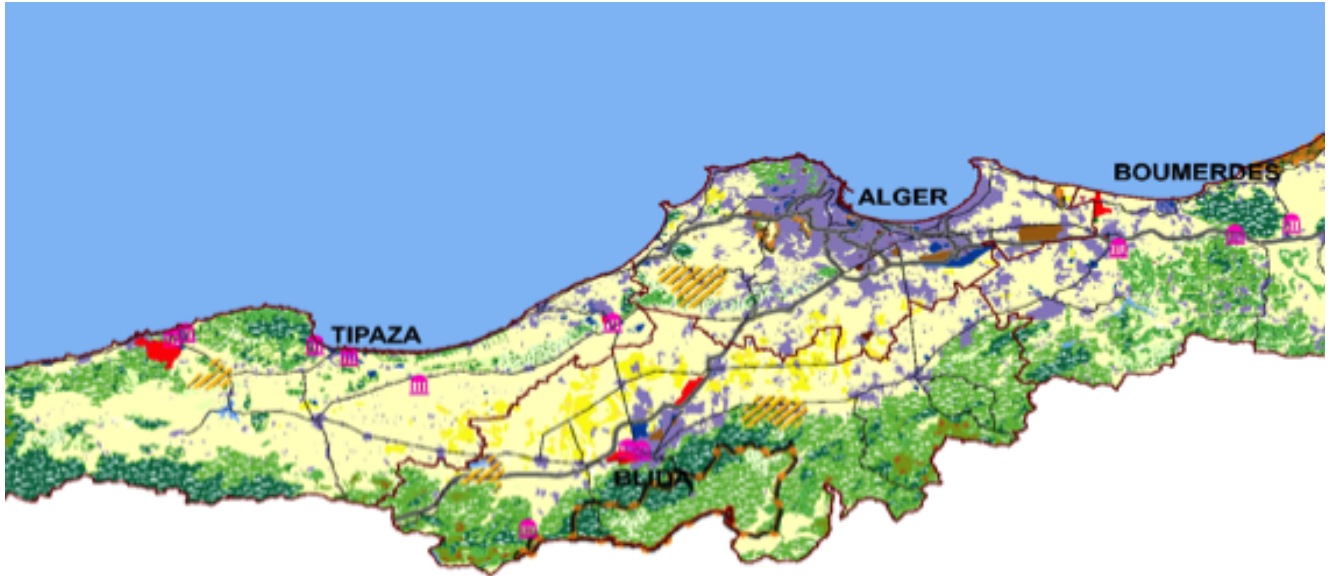


# ALGIERS METROPOLITAN AREA DEVELOPMENT MASTER PLAN



## PROJECT

The Algiers metropolitan area development master plan (SDAAM) valid until 2030 concerns the provinces (wilayas) of Algiers, Boumerdès, Blida and Tipasa. In 2008, the Algiers metropolitan area had 5.3 million inhabitants. What is at stake is the restructuring of the metropolitan area to restore Algiers' international competitiveness. Improving living conditions and implementing large-scale urban development projects should help Algiers to rise to the challenges of sustainable development.

The SDAAM replaces the Wilayas development plan (PAW), provides a guiding framework for the urban development master plans (PDAU) and forms part of the guidelines of the National spatial development plan. It takes into account Algiers' strategic plan, the new Algiers PDAU and the wilayas development plan.

## METHOD

The project was divided into four phases: demarcation of the metropolitan area, territorial diagnosis, development master plan, implementation and monitoring tools.

## RESULTS

The project achieved three important outcomes: the formulation of an urban development and planning strategy for the Algiers metropolis; the identification of large-scale urban development and infrastructure projects; and ensuring that the necessary tools are in place for implementing and monitoring the planning process.

Furthermore, the document gives up-to-date information on the city. This framework document guides the sectoral policies and major urban development projects, and sets out an operational action plan.

## PRODUCTS

Diagnosis, 68 p. – Orientations, 48 p. – Development master plan, 521 p.

## MAIN POINTS

### Beneficiaries

Ministry of Urban Planning, Environment and Tourism of Algeria

### Donors

Ministry of Finance of Algeria

### Implementation period

January 2008

### Duration of the study

A project in progress (suspended from 2009 to 2015)

### Total cost of project

530,000 euros

### Share of L'Institut Paris Region

84,000 euros

### Partners

L'Institut Paris Region  
CNERU

### Mobilisation of experts

4 person-days x month  
80 person-days x month

### Main experts

#### L'Institut Paris Region

Éric Huybrechts, project leader  
Jean-François Saigault, economist geographer  
Iuli Nascimento, environmental expert  
Sylvie Castano, cartographer

### CNERU - Algerian Centre for Planning and Architectural Studies

Kamel Touati, head of studies  
Mrs Haddadi, head of studies  
CNERU's team

### Basic project data

Surface area: 5,140 sq. km.  
Population: 5.3 million inhabitants

L'INSTITUT  
PARIS  
REGION